

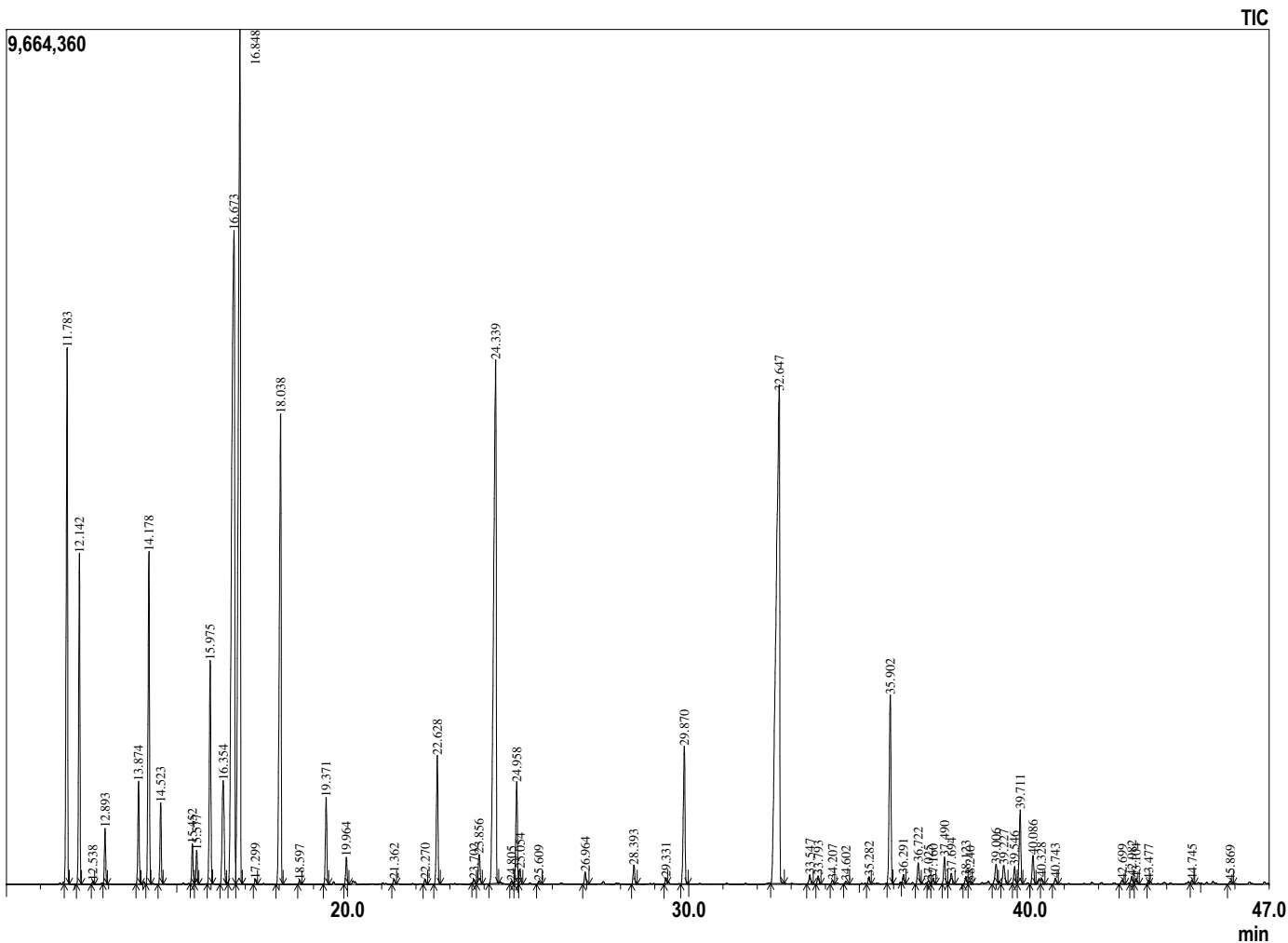
### Sample Information

Analyzed by : Dr. Prabodh Satyal  
 Analyzed : 7/23/2019 3:30:38 PM  
 Sample Type : Essential Oil  
 Sample Name : Immunity Blend  
 Company Name : Gurunanda  
 Lot# : NA  
 Injection Volume : 0.30



### Peak Report TIC

R.Time	Name	Area%
11.783	Thujene<alpha->	6.31
12.142	Pinene <alpha->	3.52
12.538	Thujadiene	0.04
12.893	Camphene	0.57
13.874	Sabinene	1.13
14.178	Pinene <beta->	3.91
14.523	Myrcene	0.86
15.452	Phellandrene <alpha->	0.45
15.577	Carene<delta-3->	0.37
15.975	Terpinene <alpha->	2.73
16.354	Cymene<para->	1.73
16.673	Limonene	15.94
16.848	1,8-cineole	14.98
17.299	Ocimene <E-beta>	0.06
18.038	Terpinene <gamma>	7.05
18.597	Sabinene hydrate <cis->	0.05
19.371	Terpinolene	1.02
19.964	Linalool	0.31
21.362	Menth-2-en-1-ol <cis-p>	0.07
22.270	Menth-2-en-1-ol <trans-p>	0.06
22.628	Camphor	1.66
23.702	Terpineol <delta>	0.06
23.856	Borneol	0.43
24.339	Terpinen-4-ol	10.92
24.805	Methyl salicylate	0.03
24.958	Terpineol <alpha>	1.34
25.054	Methyl chavicol	0.18
25.609	Piperitol<trans->	0.04
26.964	Neral	0.15
28.393	Geranial	0.25
29.331	Bornyl acetate	0.07
29.870	Carvacrol	1.88
32.647	Eugenol	14.69
33.547	Geranyl acetate	0.13
33.793	Copaene <alpha>	0.11
34.207	Bourbonene <beta>	0.05
34.602	Methyleugenol	0.04
35.282	Gurjunene <alpha>	0.09
35.902	Caryophyllene <beta>	2.67
36.291	Bergamotene <trans-alpha>	0.10
36.722	Aromadendrene	0.33
37.025	Selina5,11-diene	0.05
37.160	Muurola-3,5-diene<trans->	0.06
37.490	Humulene <alpha>	0.36
37.694	Alloaromadendrene	0.15
38.123	Cadina-1(6),4-diene <cis->	0.11
38.240	Cadina-1(6),4-diene <trans->	0.04
39.006	Viridiflorene	0.33
39.227	Bicyclogermacrene	0.32
39.546	Bisabolene <beta>	0.24
39.711	Eugenol <acetate>	1.00
40.086	Cadinene <delta>	0.41
40.328	Zonarene	0.08
40.743	Cadine-1,4-diene <trans->	0.08
42.699	Spathulenol	0.06
42.982	Caryophyllene oxide	0.12
43.104	Globulol	0.07
43.477	Viridiflorol	0.05
44.745	Cubebol<1-epi>	0.04
45.869	Caryophyllene <14-hydroxy-9epi-Z>	0.04
		100.00



Comments:  
 The analysis of this Immunity blend sample meets the expected chemical profile of pure and natural blend of essential oils.

Copyright © 2019 by Aromatic Plant Research Center (APRC). All rights reserved.  
 The information contained in this document may not be used, published or redistributed, including online, without the prior written consent of APRC.

Reviewed by: Ambika Poudel