

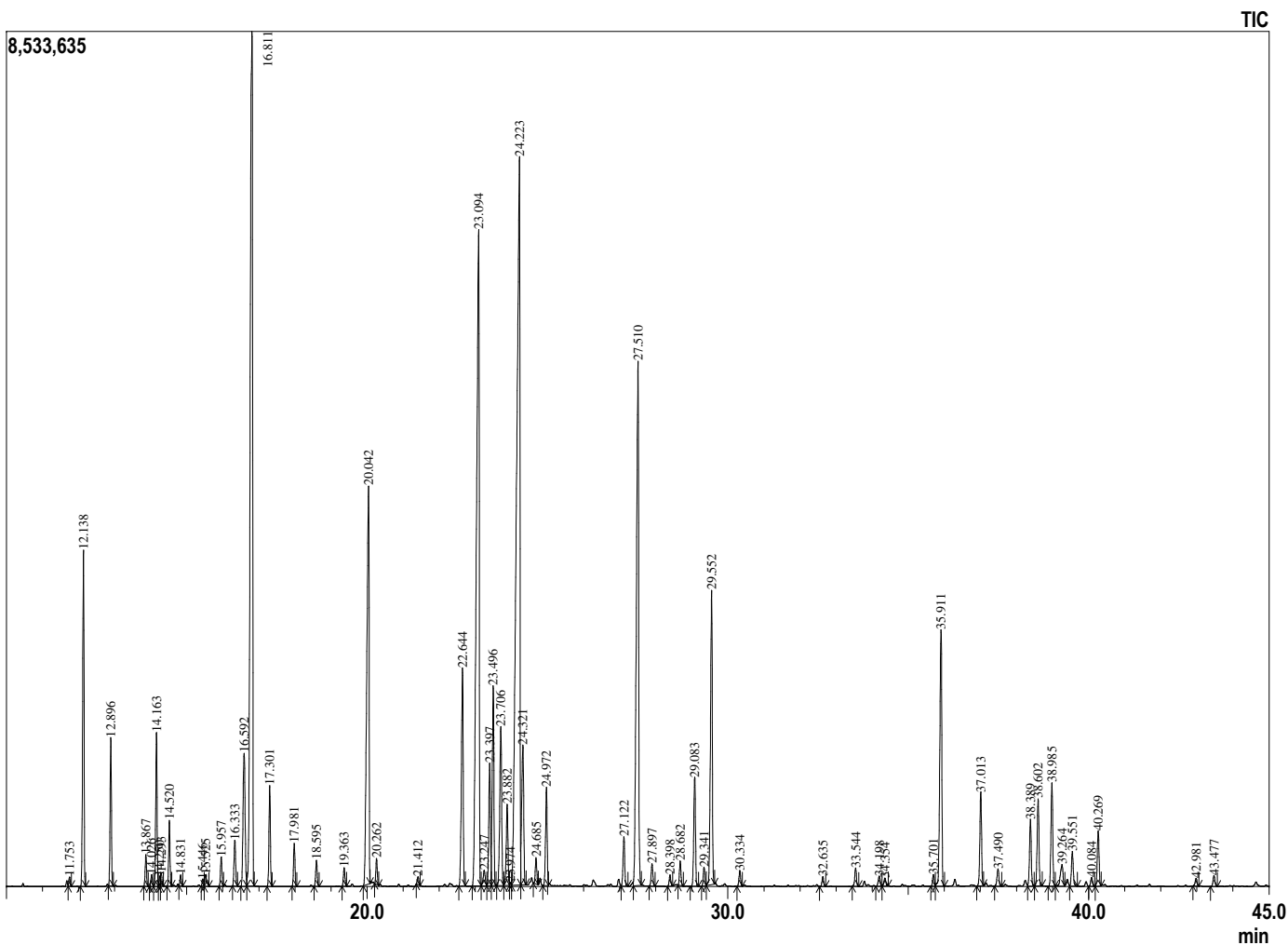
Sample Information

Analyzed by : Dr. Prabodh Satyal
 Analyzed : 7/23/2019 10:01:22 AM
 Sample Type : Essential Oil
 Sample Name : Head Blend
 Company Name : Gurunanda
 Lot# : NA
 Injection Volume : 0.30



Peak Report TIC

R.Time	Name	Area%
11.753	Thujene <alpha->	0.08
12.138	Pinene <alpha->	3.22
12.896	Camphene	1.35
13.867	Sabinene	0.30
14.026	1-Octen-3-ol	0.11
14.163	Pinene <beta->	1.48
14.250	Hept-5-en-2-one <6-methyl->	0.09
14.293	3-Octanone	0.11
14.520	Myrcene	0.60
14.831	Octanol <3>	0.10
15.446	Phellandrene <alpha->	0.06
15.525	Hexyl acetate	0.16
15.957	Terpinene <alpha->	0.29
16.333	Cymene <para->	0.51
16.592	Limonene	1.91
16.811	Cineole <1,8>	13.96
17.301	Ocimene <E-beta>	0.99
17.981	Terpinene <gamma>	0.43
18.595	Sabinene hydrate <cis>	0.27
19.363	Terpinolene	0.20
20.042	Linalool	6.23
20.262	Octen-3-yl acetate<1>	0.25
21.412	Ocimene <allo>	0.08
22.644	Camphor	2.65
23.094	Menthone	12.38
23.247	Lavandulol	0.22
23.397	menthofuran	1.43
23.496	Isomenthone	2.22
23.706	Neomenthol	2.07
23.882	Borneol	0.96
23.974	Isopulegone <trans>	0.03
24.223	Menthol	16.95
24.321	Terpinen-4-ol	1.90
24.685	Menthol <iso>	0.26
24.972	Terpineol <alpha>	1.09
27.122	Pulegone	0.57
27.510	Linalyl acetate	8.08
27.897	Piperitone	0.26
28.398	Geranial	0.12
28.682	Menthyl acetate <neo>	0.26
29.083	Lavandulyl acetate	1.26
29.341	Bornyl acetate	0.21
29.552	Menthyl acetate	3.70
30.334	Menthyl acetate <iso>	0.18
32.635	Neryl acetate	0.11
33.544	Geranyl acetate	0.22
34.198	Bourbonene <beta>	0.13
34.354	Elemene <beta>	0.11
35.701	Santalene <alpha>	0.13
35.911	Caryophyllene <beta>	3.45
37.013	Farnesene<(E)-beta->	1.11
37.490	Humulene <alpha>	0.22
38.389	Curcumene <alpha>	0.79
38.602	Germacrene D	1.08
38.985	Zingiberene<alpha->	1.27
39.264	Farnesene <(E,E)alpha>	0.40
39.551	Bisabolene <beta>	0.44
40.084	Cadinene <delta>	0.11
40.269	Sesquiphellandrene <beta>	0.66
42.981	Caryophyllene oxide	0.10
43.477	Viridiflorol	0.14
		100.00



Comments:
 The analysis of this Head blend sample meets the expected chemical profile of pure and natural blend of essential oils.

Copyright © 2019 by Aromatic Plant Research Center (APRC). All rights reserved. The information contained in this document may not be used, published or redistributed, including online, without the prior written consent of APRC.

Reviewed by: Ambika Poudel