

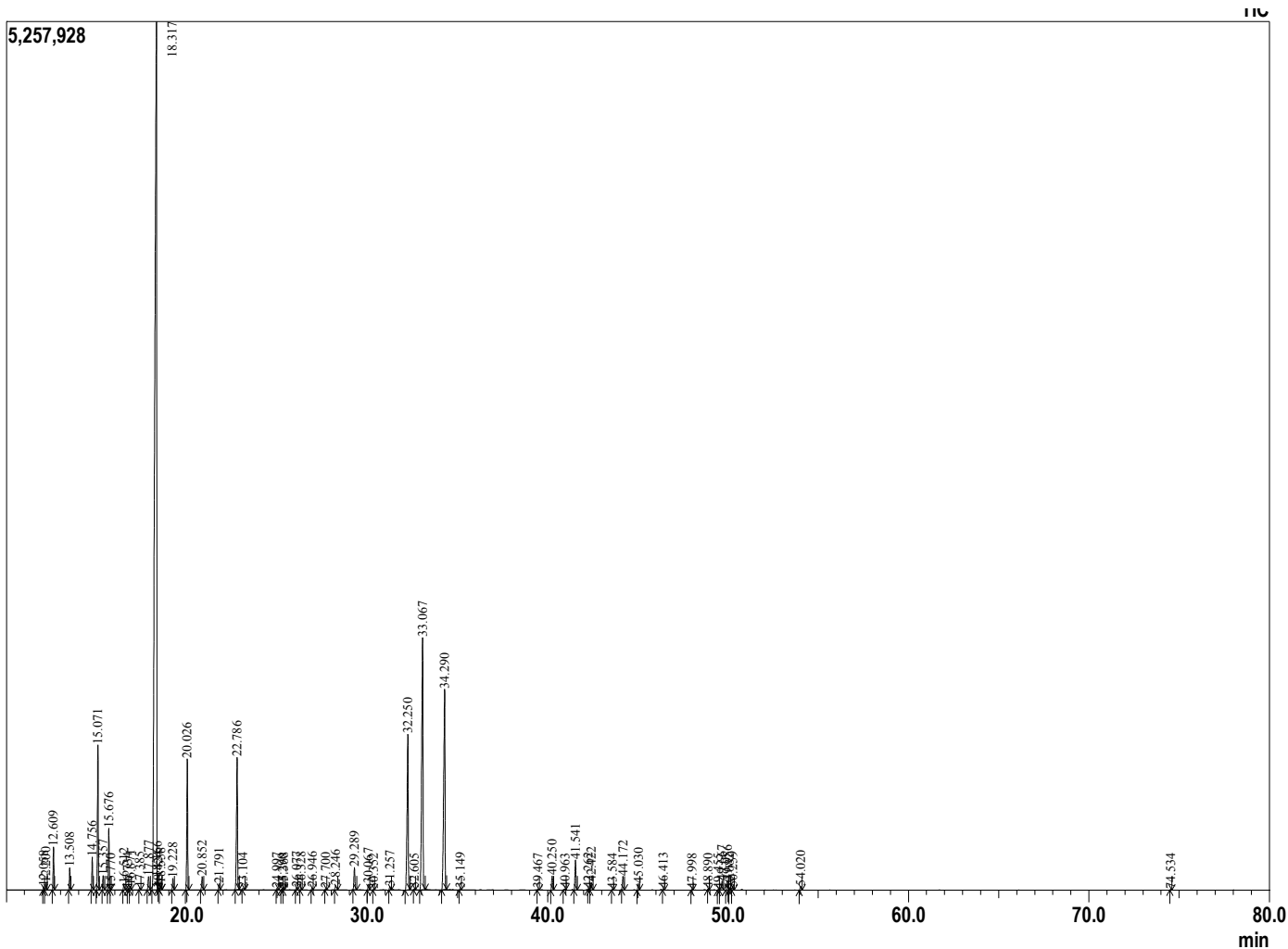
Sample Information

Analyzed by : Dr. Prabodh Satyal
 Analyzed : 12/18/2018 3:20:22 AM
 Sample Type : Essential Oil
 Sample Name : Harmony
 Lot# : Gurunanda
 Injection Volume : 0.10



Peak Report TIC

R.Time	Name	Area%
12.058	Tricyclene	0.07
12.200	Thujene <alpha->	0.14
12.609	Pinene <alpha->	0.96
13.508	Camphene	0.51
14.756	Sabinene	0.81
15.071	Pinene <beta->	3.64
15.357	Hept-5-en-2-one <6-methyl->	0.35
15.676	Myrcene	1.54
15.770	Cineole <dehydro1,8>	0.02
16.512	Octanal<n->	0.16
16.734	Phellandrene <alpha->	0.02
16.871	3-Carene	0.09
17.385	Terpinene <alpha->	0.06
17.877	Cymene <para->	0.48
18.317	Limonene	52.98
18.366	Phellandrene <beta->	0.04
18.424	1,8-cineole	0.02
18.558	Ocimene<(Z)-beta->	0.16
19.228	Ocimene <E-beta>	0.31
20.026	Terpinene <gamma->	3.55
20.852	Nonanone<2>	0.40
21.791	Terpinolene	0.18
22.786	Linalool,	4.25
23.104	Nonanal	0.07
24.997	Mentha-2,8-dien-1-ol <cis-para>	0.05
25.290	Limonene oxide <E>	0.04
25.368	Epiphocitral A	0.04
26.077	Chrysanthal<E>	0.07
26.328	Citronellal	0.07
26.946	Isocitral <cis>	0.06
27.700	Borneol	0.04
28.246	Isocitral <E->	0.18
29.289	Terpineol <alpha>	0.69
30.067	Decanal<n->	0.18
30.352	Octyl acetate	0.02
31.257	Nerol	0.11
32.250	Neral	5.73
32.605	Carvone	0.02
33.067	Linalyl acetate	10.37
34.290	Geranial	8.10
35.149	Carvone oxide<E>	0.04
39.467	Terpinyl acetate<alpha->	0.03
40.250	Neryl acetate	0.45
40.963	Cyclosativene	0.04
41.541	Geranyl acetate	0.94
42.262	Elemene <beta>	0.03
42.422	Vanillin.	0.24
43.584	Dodecanal	0.02
44.172	Caryophyllene <trans>	0.45
45.030	Bergamotene <trans-alpha>	0.21
46.413	Humulene <alpha>	0.04
47.998	Germacrene D	0.03
48.890	Viridiflorene (Ledene)	0.02
49.455	Farnesene <(E,E)alpha>	0.03
49.667	Bisabolene <beta->	0.31
49.956	Amorphene <delta>	0.31
50.082	Cadinene <gamma>	0.02
50.259	Cadinene <delta->	0.08
54.020	Caryophyllene oxide <beta>	0.14
74.534	Citropten	0.02
		100.00



Comments:
 The analysis of this Harmony blend sample meets the expected chemical profile of pure and natural blend of essential oil.

Copyright © 2018 by Aromatic Plant Research Center (APRC). All rights reserved.
 The information contained in this document may not be used, published or redistributed, including online, without the prior written consent of APRC.

Reviewed by: Ambika Poudel