

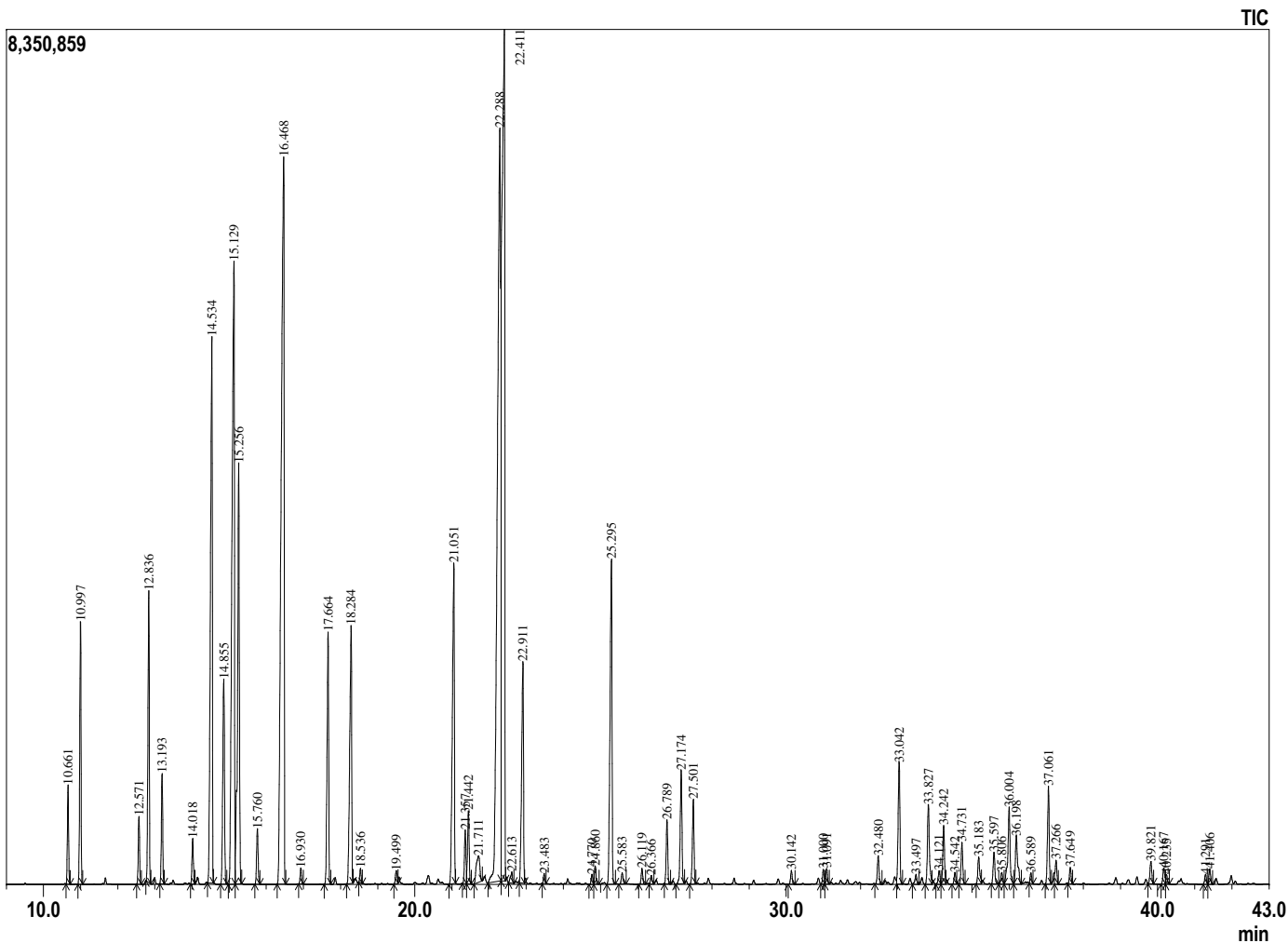
### Sample Information



Analyzed by : Dr. Prabodh Satyal  
 Analyzed : 7/23/2019 3:58:16 PM  
 Sample Type : Essential Oil  
 Sample Name : Feet Blend  
 Company Name : Gurunanda  
 Lot# : NA  
 Injection Volume : 0.30

Peak Report TIC

R.Time	Name	Area%
10.661	Thujene <alpha->	0.71
10.997	Pinene <alpha->	2.00
12.571	Sabinene	0.53
12.836	Pinene <beta->	2.40
13.193	Myrcene	0.85
14.018	Phellandrene <alpha->	0.37
14.534	Terpinene <alpha->	6.06
14.855	Cymene <para->	2.07
15.129	Limonene	8.85
15.256	Cineole <1.8>	4.42
15.760	Ocimene <E-beta>	0.49
16.468	Terpinene <gamma->	12.35
16.930	Sabinene hydrate <cis>	0.13
17.664	Terpinolene	2.33
18.284	Linalool	2.90
18.536	Octen-3-yl acetate<1>	0.11
19.499	Menth-2-en-1-ol <cis-p>	0.13
21.051	Menthone	3.71
21.357	Menthofuran	0.49
21.442	Isomenthone	0.67
21.711	Neomenthol	0.55
22.288	Menthol	14.91
22.411	Terpinen-4-ol	14.55
22.613	Menthol <iso>	0.13
22.911	Terpineol <alpha->	2.41
23.483	Piperitol <trans>	0.09
24.770	Neral	0.10
24.860	Pulegone	0.16
25.295	Linalyl acetate	3.74
25.583	Piperitone	0.11
26.119	Geranial	0.14
26.366	Menthyl acetate <neo>	0.08
26.789	Lavandulyl acetate	0.59
27.174	Menthyl acetate	1.14
27.501	Carvacrol	0.80
30.142	Neryl acetate	0.13
31.000	Geranyl acetate	0.13
31.091	Copaene <alpha->	0.15
32.480	Gurjunene <alpha->	0.28
33.042	Caryophyllene <beta>	1.27
33.497	Bergamotene <trans-alpha>	0.11
33.827	Aromadendrene	0.92
34.121	Myrtayl-4(12)-ene	0.14
34.242	Farnesene<(E)-beta->	0.57
34.542	Humulene <alpha>	0.12
34.731	Alloaromadendrene	0.41
35.183	Cadina-1(6),4-diene <cis->	0.31
35.597	Germacrene D	0.33
35.806	Selinene <delta>	0.13
36.004	Viridiflorene	1.01
36.198	Bicyclogermacrene	0.67
36.589	Bisabolene <beta->	0.10
37.061	Cadinene <delta>	0.97
37.266	Zonarene	0.24
37.649	Cadine-1,4-diene <trans->	0.16
39.821	Globulol	0.24
40.167	Viridiflorol	0.17
40.235	Cubeban-11-ol	0.09
41.291	Eudesmol <isomer>	0.10
41.406	Cubeno<1-epi>	0.15
		100.00



Comments:  
 The analysis of this Feet blend sample meets the expected chemical profile of pure and natural blend of essential oils.

Copyright © 2019 by Aromatic Plant Research Center (APRC). All rights reserved.  
 The information contained in this document may not be used, published or redistributed, including online, without the prior written consent of APRC.

Reviewed by: Ambika Poudel