

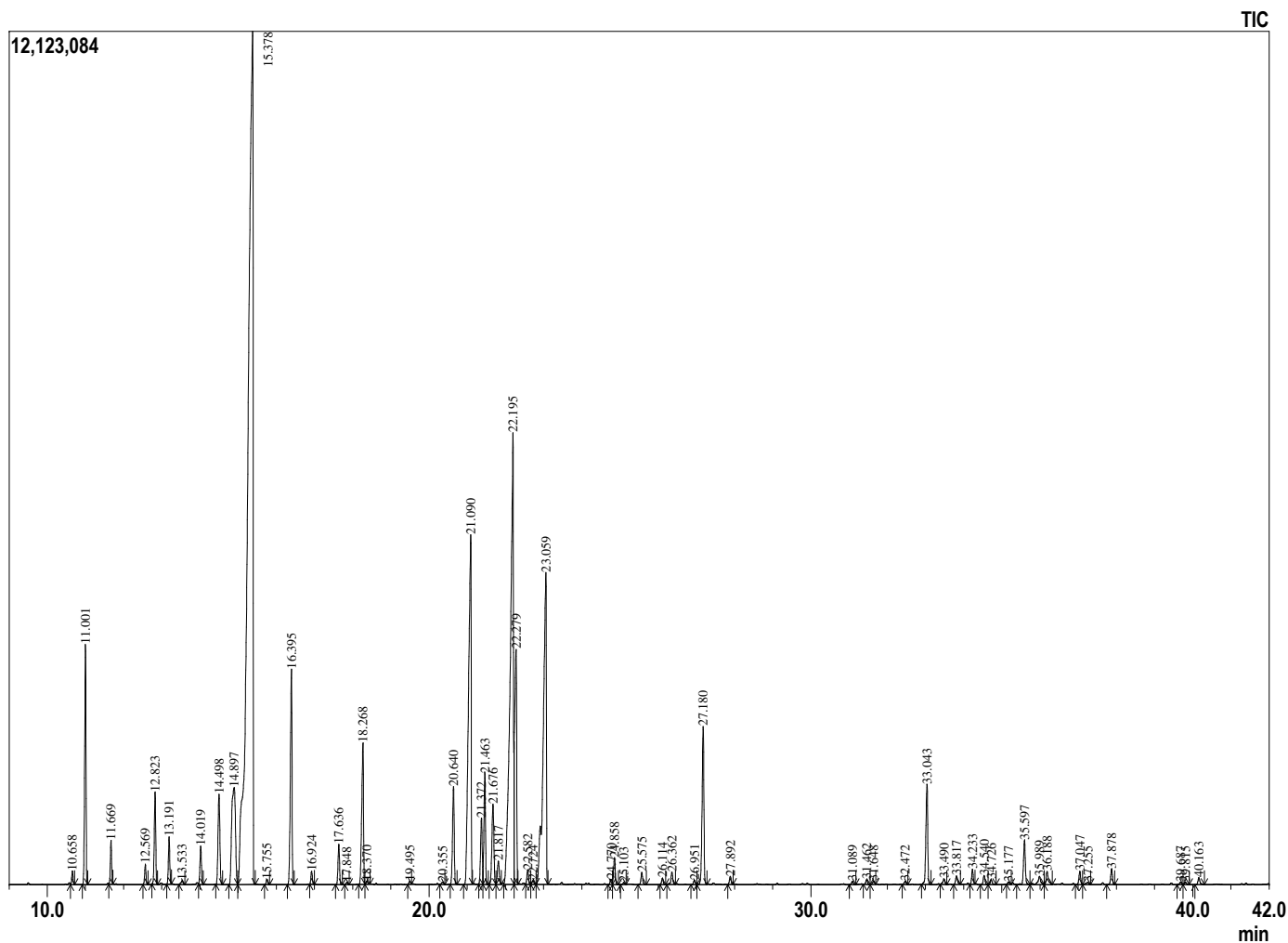
Sample Information

Analyzed by : Dr. Prabodh Satyal
Analyzed : 7/23/2019 5:49:18 PM
Sample Type : Essential Oil
Sample Name : ENT Blend
Company Name : Gurunanda
Lot# : NA
Injection Volume : 0.30



Peak Report TIC

R.Time	Name	Area%
10.658	Thujene <alpha->	0.15
11.001	Pinene <alpha->	2.86
11.669	Camphene	0.48
12.569	Sabinene	0.24
12.823	Pinene <beta->	1.12
13.191	Myrcene	0.56
13.533	Octanol <3>	0.07
14.019	Phellandrene <alpha->	0.50
14.498	Terpinene <alpha->	1.45
14.897	Cymene <para->	3.12
15.378	1,8-cineole	36.99
15.755	Ocimene <E-beta>	0.07
16.395	Terpinene <gamma>	2.98
16.924	Sabinene hydrate <cis>	0.16
17.636	Terpinolene	0.52
17.848	Cymenene <para->	0.03
18.268	Linalool	2.18
18.370	Methyl butyl-2-methyl butyrate<2->	0.05
19.495	Menth-2-en-1-ol <cis-p>	0.04
20.355	Menth-2-en-1-ol <trans-p>	0.04
20.640	Camphor	1.40
21.090	Menthone	7.95
21.372	Menthofuran	0.95
21.463	Isomenthone	1.47
21.676	neomenthol	1.37
21.817	Borneol	0.38
22.195	Menthol	12.53
22.279	Terpinen-4-ol	3.85
22.582	Menthol <iso>	0.20
22.724	Menthol <neiso>	0.06
23.059	Methyl chavicol	8.35
24.770	Neral	0.08
24.858	Pulegone	0.38
25.103	Carvone	0.03
25.575	Piperitone	0.18
26.114	Geranial	0.09
26.362	Menthyl acetate <neo>	0.19
26.951	Bornyl acetate	0.06
27.180	Menthyl acetate	2.46
27.892	Menthyl acetate <iso->	0.11
31.089	Copaene <alpha>	0.05
31.462	Bourbonene <beta>	0.07
31.648	Elemene <beta>	0.05
32.472	Gurjunene <alpha->	0.05
33.043	Caryophyllene <beta>	1.58
33.490	Bergamotene <trans-alpha>	0.09
33.817	Aromadendrene	0.14
34.233	Farnesene <(E)-beta->	0.20
34.540	Humulene <alpha>	0.14
34.726	Alloaromadendrene	0.08
35.177	Cadina-1(6),4-diene <cis->	0.05
35.597	Germacrene D	0.70
35.989	Viridiflorene	0.20
36.188	Bicyclogermacrene	0.24
37.047	Cadinene <delta>	0.20
37.255	Zonarene	0.06
37.878	Bisabolene <trans-alpha>	0.24
39.687	Caryophyllene oxide	0.04
39.815	Globulol	0.04
40.163	Viridiflorol	0.12
		100.00



Comments:
 The analysis of this ENT blend sample meets the expected chemical profile of pure and natural blend of essential oils.

Copyright © 2019 by Aromatic Plant Research Center (APRC). All rights reserved.
 The information contained in this document may not be used, published or redistributed, including online, without the prior written consent of APRC.

Reviewed by: Ambika Poudel