

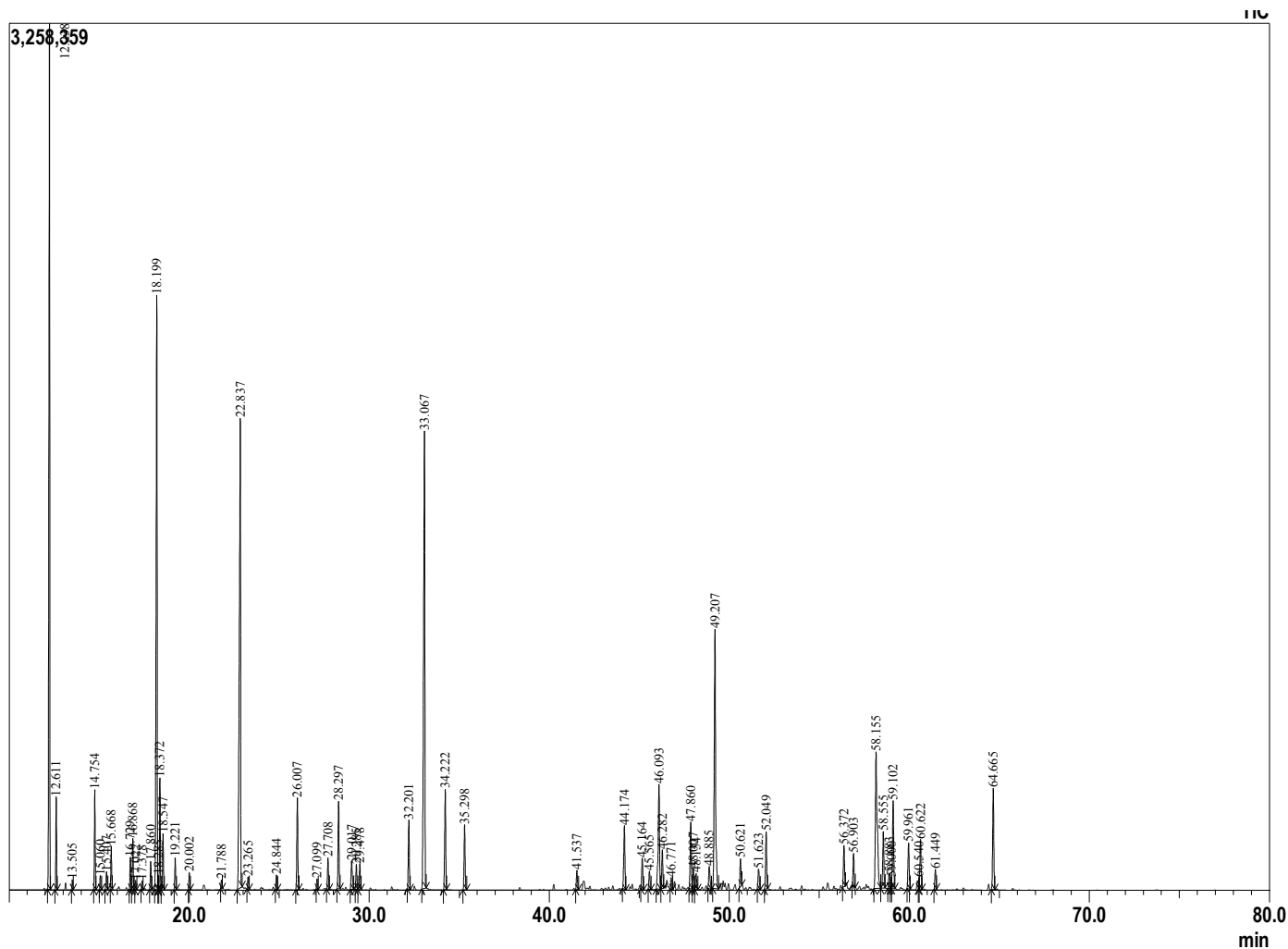
**Analyzed by** : Dr. Prabodh Satyal  
**Analyzed** : 12/18/2018 5:18:31 AM  
**Sample Type** : Essential Oil  
**Sample Name** : Calming Sleep  
**Lot#** : Gurunanda  
**Injection Volume** : 0.10

**Sample Information**



Peak Report TIC

R.Time	Name	Area%
12.238	Thujene <alpha->	13.92
12.611	Pinene <alpha->	1.21
13.505	Camphene	0.14
14.754	Sabinene	1.42
15.060	Pinene <beta->	0.23
15.407	3-Octanone	0.30
15.668	Myrcene	0.63
16.729	Phellandrene <alpha->	0.50
16.868	3-Carene	0.80
17.022	Hexyl acetate	0.14
17.378	Terpinene <alpha->	0.13
17.860	Cymene <para->	0.45
18.199	Limonene	11.31
18.285	Phellandrene <beta->	0.18
18.372	1,8-cineole	1.66
18.547	Ocimene <Z-beta>	0.86
19.221	Ocimene <E-beta>	0.50
20.002	Terpinene <gamma->	0.27
21.788	Terpinolene	0.13
22.837	Linalool	11.27
23.265	Octen-3-yl acetate<1>	0.20
24.844	4-Acetyl-1-methylcyclohexene	0.25
26.007	Camphor	1.66
27.099	Lavandulol	0.18
27.708	Borneol	0.56
28.297	Terpinen-4-ol	1.64
29.017	Methyl salicylate	0.66
29.285	Terpineol <alpha->	0.46
29.478	Methyl chavicol	0.46
32.201	Neral	1.30
33.067	Linalyl acetate	10.91
34.222	Geranial	1.92
35.298	Lavandulyl acetate	1.25
41.537	Geranyl acetate	0.38
44.174	Caryophyllene <trans>	1.39
45.164	Guaiene <alpha->	0.65
45.565	Vestitenone E	0.36
46.093	Himachalene <alpha->	2.60
46.282	Farnesene<(E)-beta->	0.75
46.771	Patchoulene <alpha->	0.23
47.860	Himachalene <gamma->	1.46
48.007	Germacrene D	0.44
48.154	28.20 Himachala-1,4-diene<11-alphaH->	0.38
48.885	Zingiberene<alpha->	0.55
49.207	Himachalene <beta->	6.58
50.621	Sesquiphellandrene <beta->	0.57
51.623	Selina-3,7(11)-diene	0.49
52.049	Elemol <alpha->	1.20
56.372	Eudesmol <10-epi-gamma->	0.85
56.903	Eudesmol <gamma->	0.67
58.155	Valerianol	4.60
58.555	Eudesmol <7-epi-alpha->	1.19
58.883	Turmerone isomer	0.34
59.000	Dihydroatlantone <E-10, 11>	0.19
59.102	Patchouli alcohol	1.95
59.961	Atlantone<Z-gamma>	1.00
60.540	Deodarone(4R,8S)	0.15
60.622	Atlantone<E-gamma>	1.08
61.449	Atlantone<Z-alpha>	0.39
64.665	Atlantone <E-alpha>	2.09
		100.00



**Comments:**  
 The analysis of this Calming sleep blend sample meets the expected chemical profile of pure and natural blend of essential oils.

Copyright © 2018 by Aromatic Plant Research Center (APRC). All rights reserved.  
 The information contained in this document may not be used, published or redistributed, including online, without the prior written consent of APRC.

**Reviewed by: Ambika Poudel**