

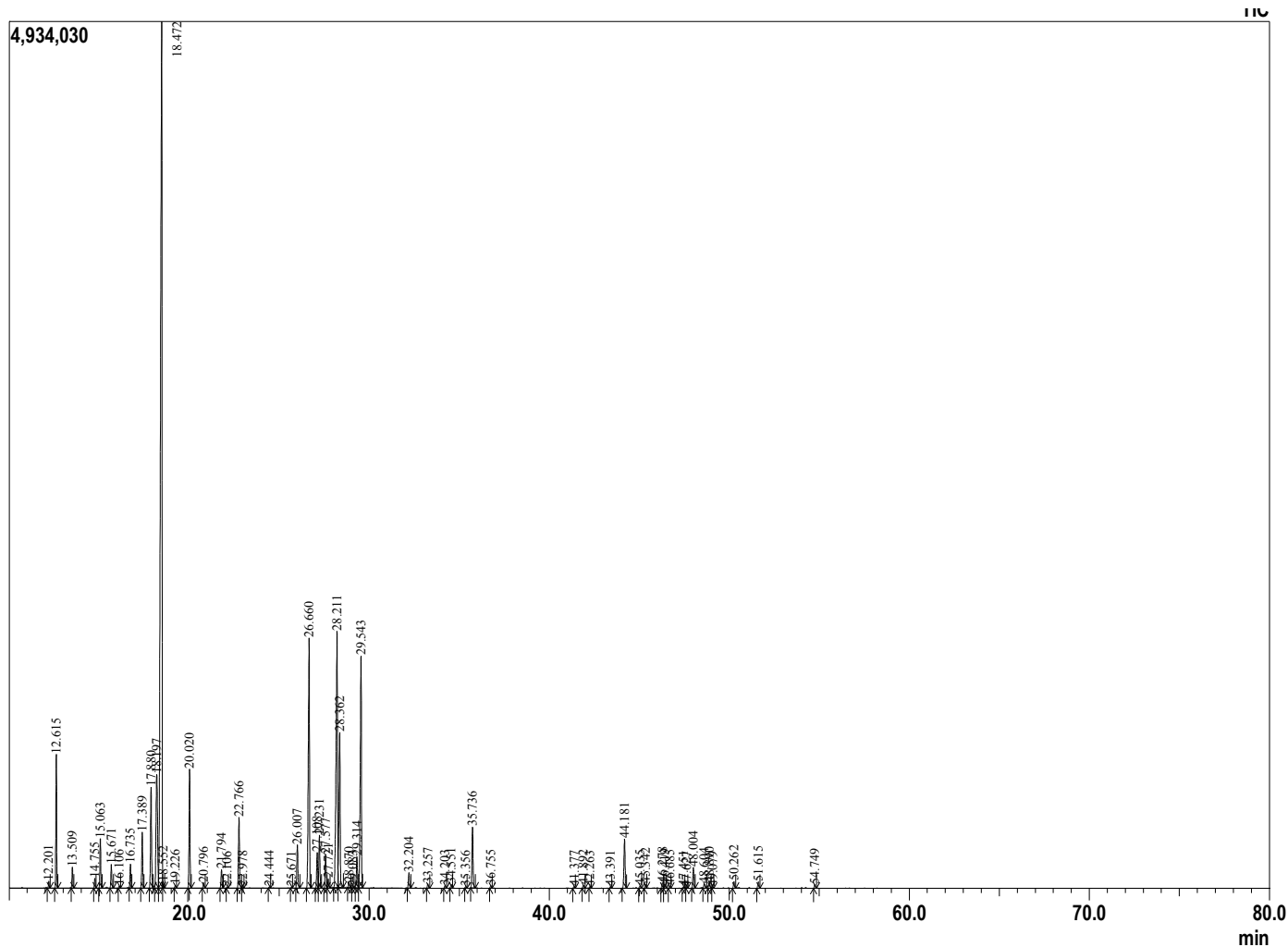
Sample Information

Analyzed by : Dr. Prabodh Satyal
 Analyzed : 12/17/2018 9:25:32 PM
 Sample Type : Essential Oil
 Sample Name : Breathe Easy
 Lot# : Gurunanda
 Injection Volume : 0.10



Peak Report TIC

R.Time	Name	Area%
12.201	Thujene <alpha->	0.14
12.615	Pinene <alpha->	2.80
13.509	Camphene	0.45
14.755	Sabinene	0.22
15.063	Pinene <beta->	1.15
15.671	Myrcene	0.55
16.106	Octanol<3->	0.05
16.735	Phellandrene <alpha->	0.56
17.389	Terpinene <alpha->	1.38
17.880	Cymene <para->	2.83
18.197	Limonene	4.64
18.472	Cineole <1,8>	36.45
18.552	Ocimene<(Z)-beta->	0.12
19.226	Ocimene<(E)-beta->	0.06
20.020	Terpinene <gamma>	3.02
20.796	Sabinene hydrate<cis->	0.14
21.794	Terpinolene	0.48
22.106	Cymenene <para->	0.02
22.766	Linalool	1.96
22.978	Methyl butyl-2-methyl butyrate<2->	0.03
24.444	Menth-2-en-1-ol<cis-para->	0.03
25.671	Menth-2-en-1-ol<trans-para->	0.02
26.007	Camphor	1.23
26.660	Menthone	8.06
27.108	Menthofuran	0.99
27.231	Isomenthone	1.42
27.577	Neomenthol	1.00
27.721	Borneol	0.26
28.211	Menthol	9.76
28.362	Terpinen-4-ol	5.11
28.870	Menthol <iso>	0.14
29.083	Menthol <neoiso>	0.03
29.314	Terpineol <alpha>	0.91
29.543	Methyl chavicol	7.58
32.204	Pulegone	0.44
33.257	Piperitone	0.12
34.203	Geranial	0.07
34.551	Menthyl acetate <neo>	0.10
35.356	Bornyl acetate	0.04
35.736	Menthyl acetate	1.81
36.755	Menthyl acetate <iso>	0.07
41.377	Copaene <alpha>	0.05
41.892	Bourbonene <alpha>	0.08
42.263	Elemene <beta>	0.04
43.391	Gurjunene <alpha>	0.04
44.181	Caryophyllene <trans>	1.53
45.035	Bergamotene <trans-alpha>	0.07
45.342	Aromadendrene	0.11
46.278	Farnesene<(E)-beta->	0.16
46.419	Humulene <alpha>	0.11
46.685	Alloaromadendrene	0.06
47.451	Cadina-1(6),4-diene <cis>	0.04
47.627	Cadina-1(6),4-diene <trans>	0.02
48.004	Germacrene D	0.63
48.604	Viridiflorene	0.12
48.890	Bicyclogermacrene	0.17
49.079	Murolene <alpha>	0.03
50.262	Cadinene <delta->	0.20
51.615	Bisabolene <trans-alpha>	0.20
54.749	Viridiflorol	0.10
		100.00



Comments:
 The analysis of this Breathe Easy blend sample meets the expected chemical profile of pure and natural blend of essential oil

Copyright © 2018 by Aromatic Plant Research Center (APRC). All rights reserved.
 The information contained in this document may not be used, published or redistributed, including online, without the prior written consent of APRC.

Reviewed by: Ambika Poudel