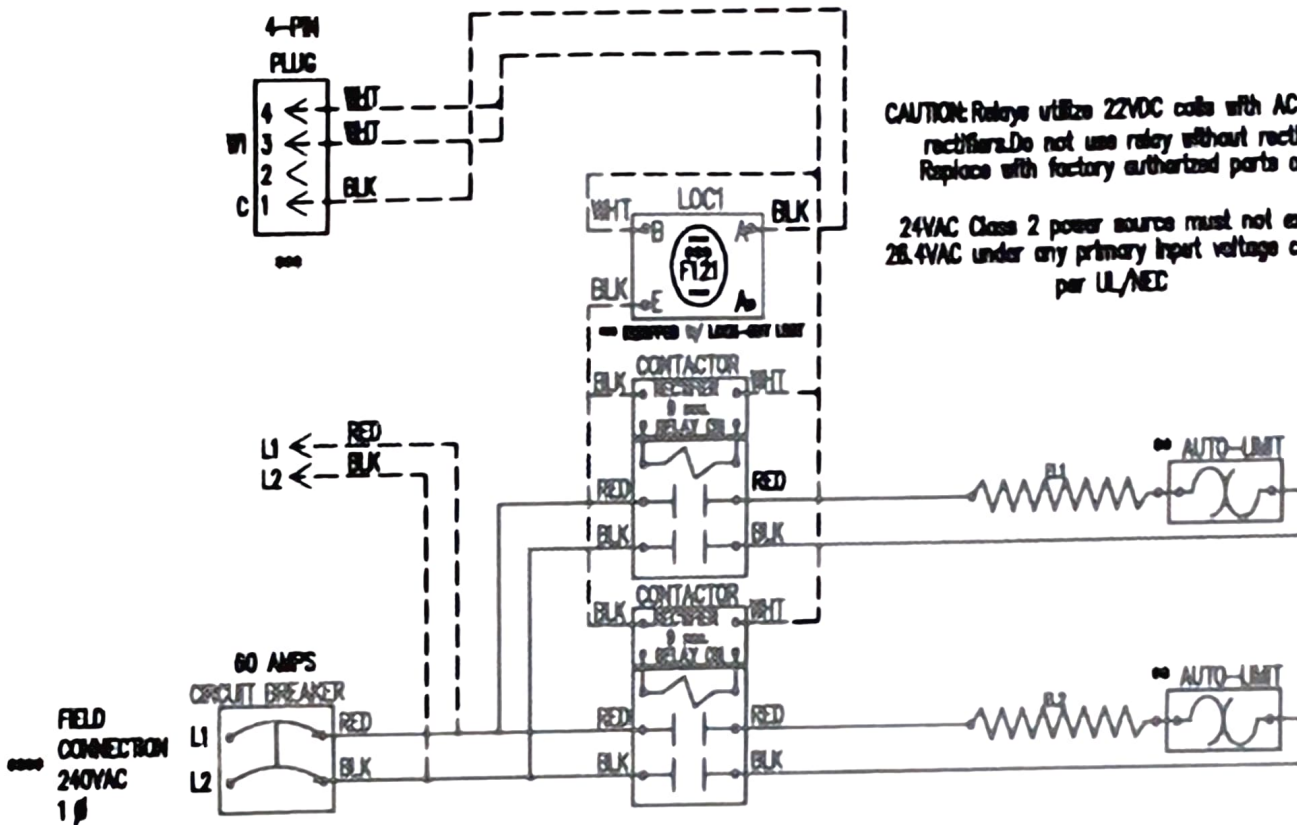


# WTM - 1002BX



CAUTION: Relays utilize 22VDC coils with AC to DC rectifiers. Do not use relay without rectifier. Replace with factory authorized parts only.

24VAC Class 2 power source must not exceed 28.4VAC under any primary input voltage condition per UL/NEC

NOTE :  
 CAUTION - Contactors utilize 22-28VDC coils with AC to DC rectifiers. Do not use contactor without rectifier. Replace with factory authorized parts only.  
 -Contactor must always utilize AC-DC Rectifier with Time Delay as shown.

\*\*\* Replace Auto-Reset with Therm-O-Disc type 60TX11-L165.  
 \*\*\*\* Replace Lock-Out Limit with 38TXV12 - 121° C To Reset Lock-Out Limit, Cycle Power To The Heater With Either The Circuit Breaker Or The Thermostat.  
 \*\*\*\*\* 24VAC, Class 2 power source must not exceed 28.4VAC under any primary input voltage condition per UL/NEC.  
 \*\*\*\*\* Power supply wiring per NEC & Local Codes. Suitable for at least 75°C.  
 Use copper conductor wiring only.

Control Wiring     -----  
 Power Wiring        =====  
 Field Wiring         —————

Model	WTM-1002BX
Serial #	_____
Tag -	_____
Kilowatts	9.6
Volts-Ph-Hz	240/1/60
Control Volts	24.0
Steps	1
Heater Amps	40.0
Circuit Breaker	60

WTM1002BX

Rev. by : D. VEGA  
 Date : 08/25/20

## WARREN TECHNOLOGY