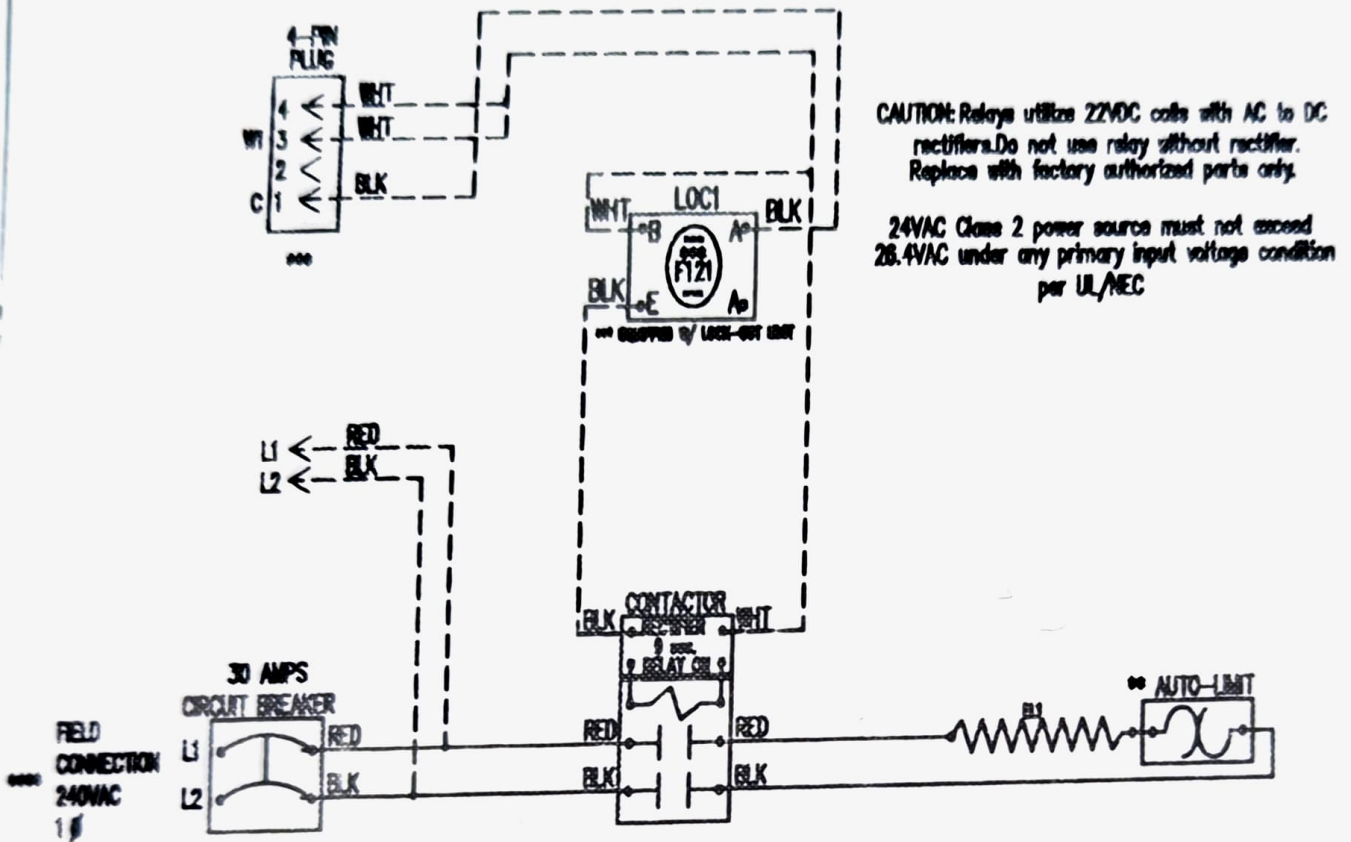


WTM - 0502BX



CAUTION: Relays utilize 22VDC coils with AC to DC rectifiers. Do not use relay without rectifier. Replace with factory authorized parts only.

24VAC Class 2 power source must not exceed 28.4VAC under any primary input voltage condition per UL/NEC

NOTE :
 CAUTION - Contactors utilize 22-28VDC coils with AC to DC rectifiers. Do not use contactor without rectifier. Replace with factory authorized parts only.
 -Contactor must always utilize AC-DC Rectifier with Time Delay as shown.
 ** Replace Auto-Reset with Therm-O-Disc type 60TX11-L165.
 *** Replace Lock-Out Limit with 36TXV12 - 121° C To Reset Lock-Out Limit, Cycle Power To The Heater With Either The Circuit Breaker Or The Thermostat.
 **** 24VAC, Class 2 power source must not exceed 28.4VAC under any primary input voltage condition per UL/NEC.
 ***** Power supply wiring per NEC & Local Codes. Suitable for at least 75 °C. Use copper conductor wiring only.

Model	WTM-0502BX
Serial #	_____
Tag -	_____
Kilowatts	4.8
Volts-Ph-Hz	240/1/60
Control Volts	24.0
Steps	1
Heater Amps	20.0
Circuit Breaker	30

Control Wiring _____
 Power Wiring _____
 Field Wiring _____

WTM0302B

Rev. by : D. VEGA
 Date : 08/25/20

WARREN TECHNOLOGY