

the little touches

wedding + party printables

INSTRUCTIONS FOR EDITING WITH *Corjl*



Thank you

for choosing The Little Touches for your printable wedding and party stationery. In this guide we will show you how to edit your chosen design through Corjl, making them personal to your party.

Corjl is specialist software that we use to make it easy for you to personalise our templates within your internet browser.

The thing to remember when editing your template is there is no set way to lay out your information. By using Corjl, you get the ability to customise the design exactly how you would like.

This guide is broken down into 4 parts:

- 1 OPENING THE TEMPLATE
- 2 EDITING TEXT & DESIGN ELEMENTS
- 3 ADDING IMAGES TO YOUR TEMPLATE
- 4 SAVING & DOWNLOADING YOUR ARTWORK FOR PRINT

If you are having any problems using our templates please contact us at:
sales@thelittletouches.com

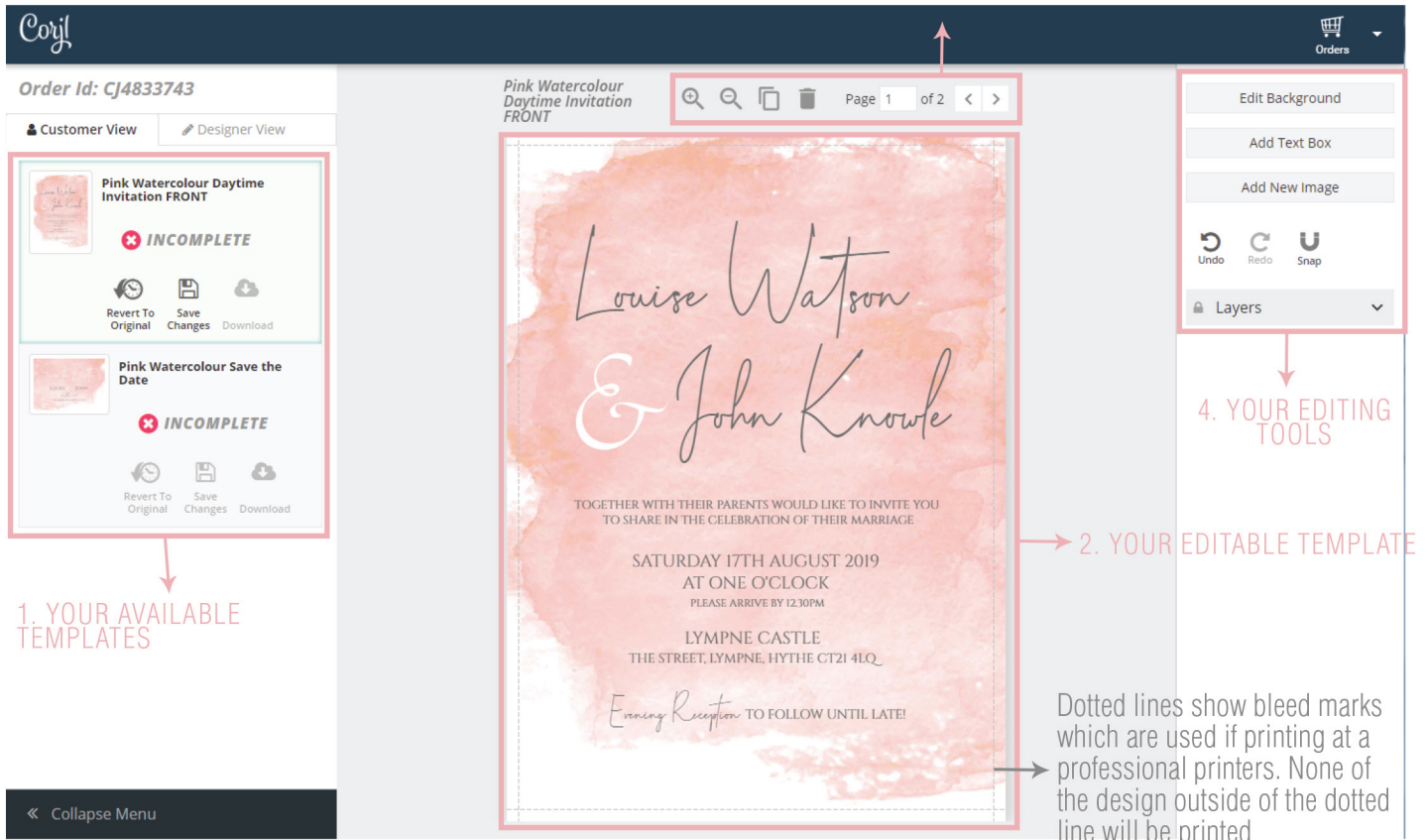
Please note that our templates are for PERSONAL USE ONLY. You may not forward, share, sell or distribute the file. It is for non-commercial use only.

www.thelittletouches.com

1. OPENING YOUR TEMPLATE - THE INTERFACE

*PLEASE NOTE - If you are personalising your template on a mobile device, you are limited to only replacing the text and replacing images. You will need to use a desktop or laptop computer to access additional features.

3. ZOOM & SINGLE SIDED OR DOUBLE SIDED



When you load your order in Corjl you will see the interface above.

1. YOUR TEMPLATES: Your template files will be visible in the panel on the left. If your order is made up of more than one item or has different sizes for you to choose they will appear here. When they are yet to be personalised they will show as INCOMPLETE. To open the file just click on the template and it will appear in the center ready for editing.

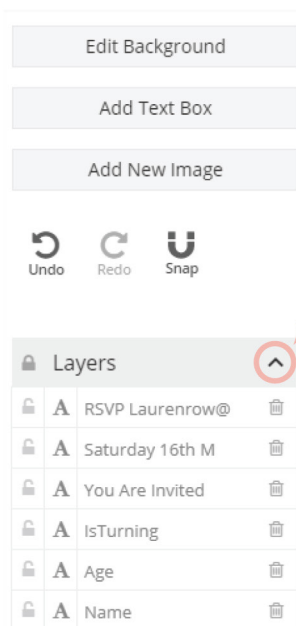
2. YOUR WORKING FILE: The file you are working on will be shown in the center of the interface.

3. ZOOM & PAGES: The magnifying glasses at the top allow you to zoom in and out of your design. Take a look at the page count at the top. If it is a single sided template it will show page 1 of 1. If the template is double sided it will show page 1 of 2. You can move to the next page by selecting the arrow to the right to move between the pages.

If you would like to add another page you can click the paper icon. You can also delete a page by clicking the rubbish bin icon when that page is selected.

4. YOUR EDITING TOOLS: In the panel on the right you can see all the editing tools. For more details on these please see Section 2.

2. EDITING TEXT & ELEMENTS IN YOUR TEMPLATE



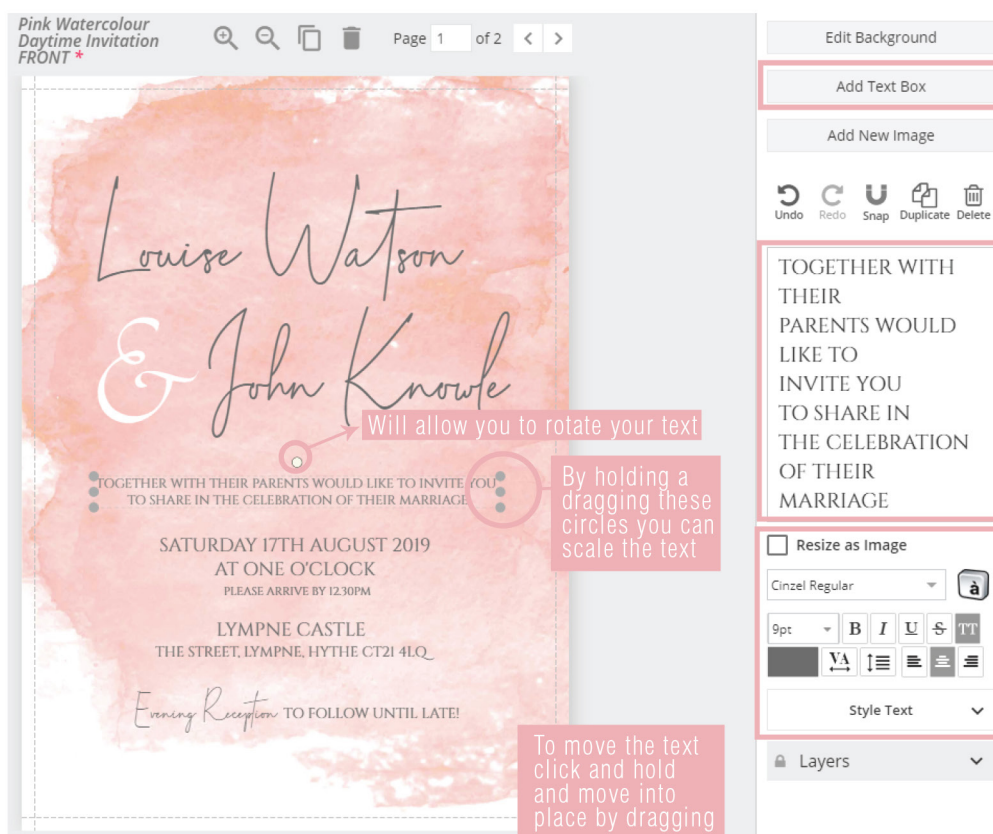
THE TOOLS PANEL allows you to edit the background, add text, add new images and view all the layers.

LAYERS: To expand the layers click the little arrow in the corner of the layers panel.

If you select a layer it will select the corresponding editable element on your template. You can then move it, scale it or add new text.

Background layers may be locked, you can unlock these by clicking the padlock icon. If there is a part of the design which can't be edited this will not show up in the layers.

EDITING TEXT & IMAGES



You can edit the text by either clicking on the text directly or selecting the layer.

You can then double click the text on the template - select the text you wish to change- and retype

Or use the text panel on the right hand side to type your text

Font Style
Colour

Select the text you want to change and choose a different font style from the drop-down box.

Select the text you want to change and click on the color rectangle in the tools panel to choose a new color or select a color from the provide color palette (if provided).

In some designs you will have the option to change image and background colours (*please note this may not available in all templates*). Select the image and click on 'change image colours' in the tools panel. You can then select the colour you wish to change and select from the colour picker. You will also get the option to change the image style.

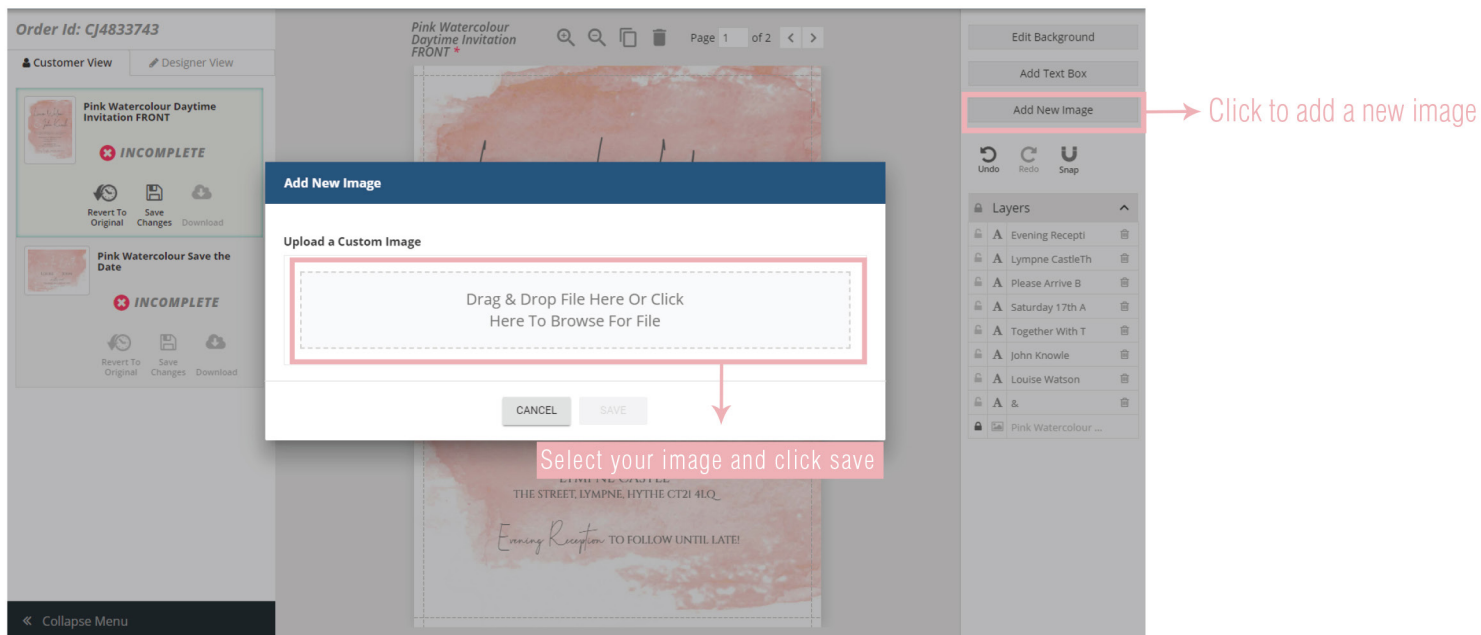
Size
Drop Shadow

Select the text you want to resize, then choose a number or enter it in the drop-down box in the tools panel.

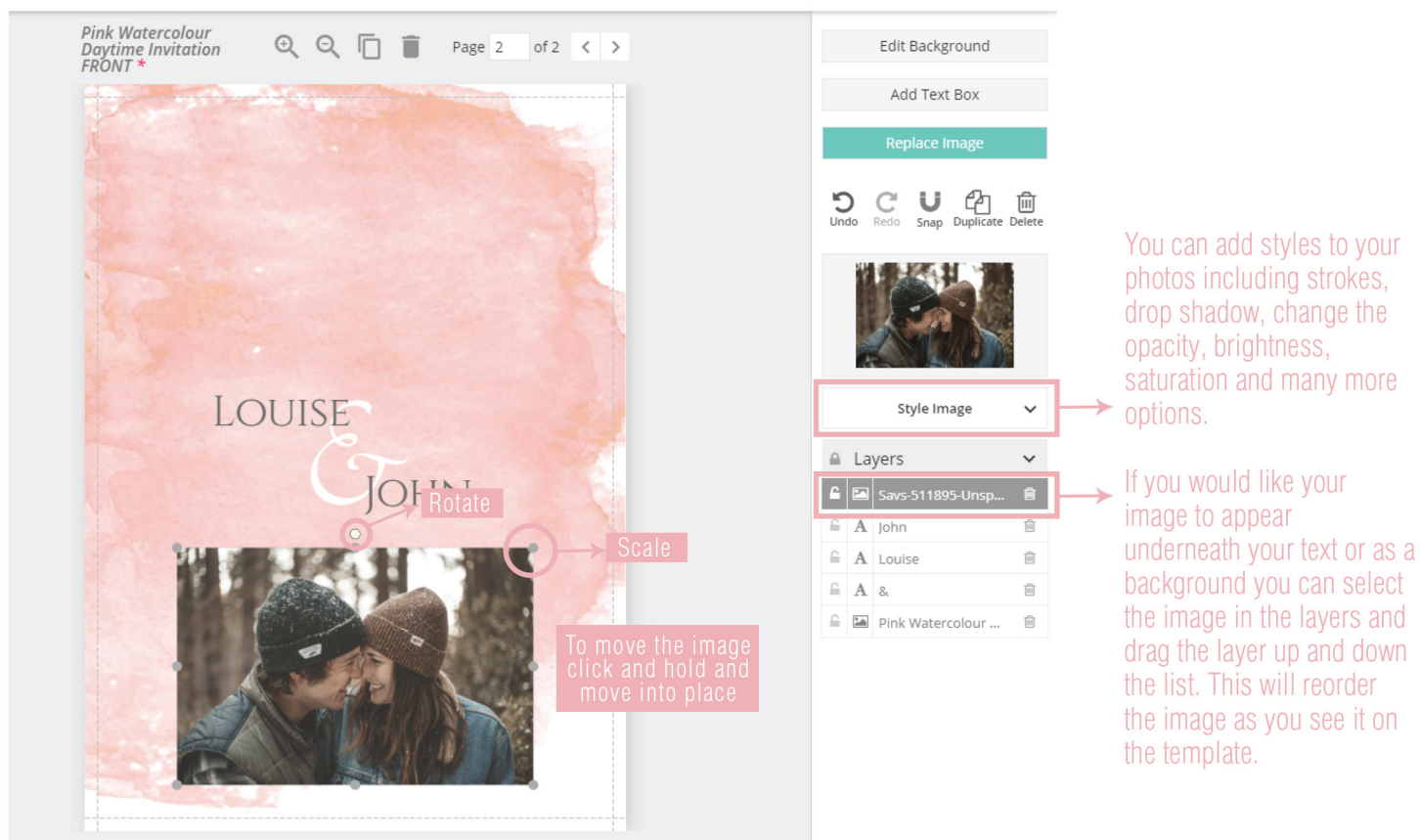
Select the text you want to add a drop shadow to, then click on Style Text in the tools panel and select

3. ADDING IMAGES TO YOUR TEMPLATE

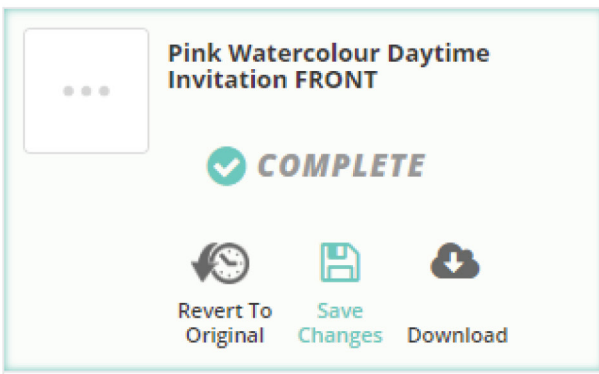
You may wish to add a new image or photo onto your template or replace a holding image which is present in the design.



Select your image by selecting the 'new image' button. This will then add a new image into your layers and place it in the center of your template.

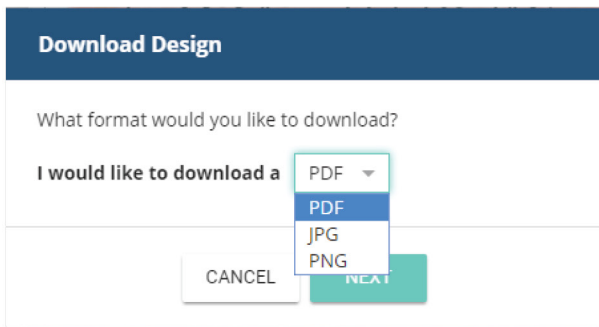


4. SAVING & DOWNLOADING YOUR ARTWORK FOR PRINT

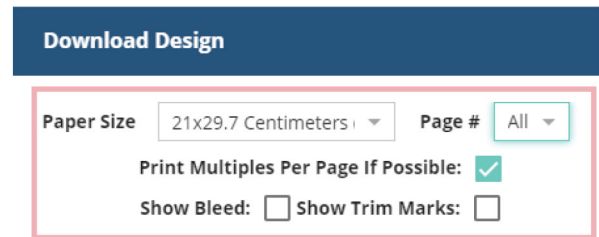


Once you are happy with your design you can click the 'save changes' button. (You will still be able to make further changes).

Once you are ready to print your template you can select the 'Download' button.



You will then get a pop-up to ask which file type you would prefer: PDF, JPG or PNG



PDF OPTIONS

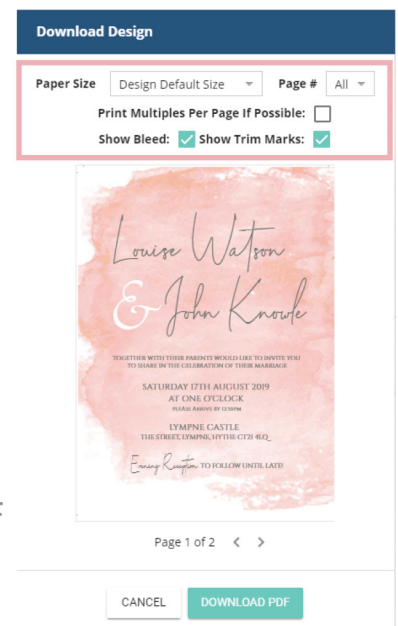
By selecting the PDF version this will give you more options than a JPG or PNG.

FOR HOME PRINTING

- Select the paper size from the drop down menu
- You can select whether to save all the pages or individual pages.
- There is the option to select 'Multiple page if possible'. This will fit more than one copy of your design on your paper size to save paper.
- You can also select to show the trim marks to give you a guide to cut.

FOR PROFESSIONAL PRINTING

- Select 'Design Default Size' in the paper option.
- Unclick the multiple per page to just give you the one design
- Professional printers may require you to show the bleed (which is set at 3mm) and also show the trim marks so you can select both these options.



Page 1 of 2 < >



You can then select DOWNLOAD PDF

Please note that all printers have different menus and printing options, so unfortunately we are unable to offer specific technical support.