

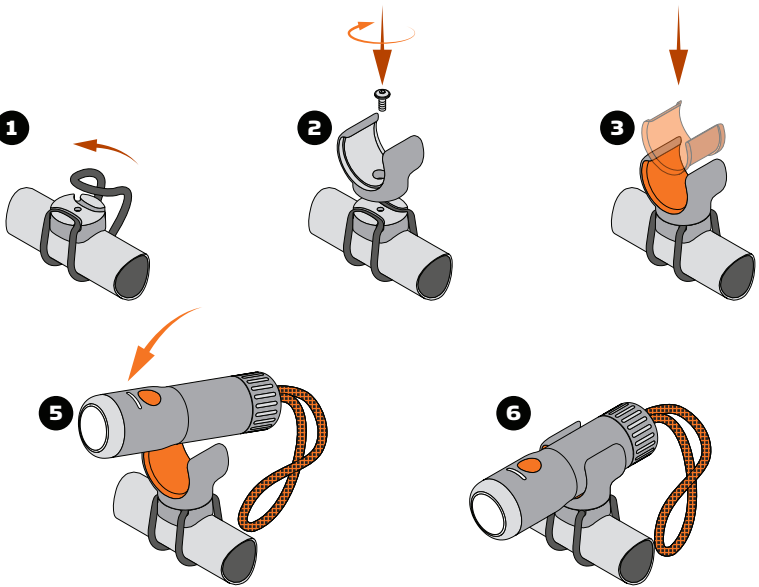
! Important

Remove battery or take extra care before transport or storage

It is the responsibility of the user to remove the battery or take extra care when transporting or storing the light to prevent potential damage from high heat. When the light is powered off, it is in lock mode and can only be activated by pressing the power button two or three times rapidly. The light may become hot during operation and could potentially melt plastic or cause injury if not handled properly. Reelight will not be held responsible for any damage to person or property resulting from a failure to follow these instructions.

📖 Mounting the bracket

1. Start by picking one of the three rubber rings best suited for the size of your handlebar. Insert one end of the ring into the groove of the bracket (remove the small screw first if it comes pre installed). Position the bracket on top of the handlebar, pull the other end of the ring around the bar and insert it into the other groove. Use the smallest ring possible as this will ensure a more stable mount.
2. Remove the orange rubber pad from the top bracket and mount the bracket on top of the base part. Insert the screw with the small o-ring and tighten it using the included Allen key.
3. Insert the orange rubber pad into the top bracket.
4. Insert the light into the bracket by pushing down from the top as illustrated.
5. Turn on the light by pressing two times for constant light or three times for flash mode.



📖 Using the light

1. To power on the light in constant mode press the button two times. Press the button again to cycle between the different modes: High -> Mid -> Low
2. To power on the light in flashing mode press the button three times. Press the button again to cycle between the different modes: Pulse -> Rapid -> Eco
3. To power off the light hold the button for 2 seconds.
4. The blue LEDs on the light will indicate the charge level when the light is powered on or during charging. To charge the light use the included USB-C cable and connect it to any standard USB type A charger. The light is fully charged when all five LEDs are on.
5. To replace the rechargeable battery unscrew the end cap, remove the battery, insert the new battery and screw back on the end cap. Make sure that the negative (-) pole is facing the end cap and that you are using the correct battery. For the LUX Light 350 you need to use an ICR 18500 3,7 V battery with a protected PCB circuit. For LUX Light 700 you need to use an ICR 18650 3,7 V battery with a protected PCB circuit. Using a battery without the protected PCB is dangerous and might cause the battery to catch fire or explode.

