

GEM+ Rear Light User Guide – English

Read all the instructions carefully before first use.

CAUTION

Do not look directly at the strobe or LED lights when operating.

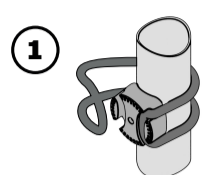
Pay attention and care when recovering the USB seal to ensure correct seal so water ingress does not occur. No liability can be accepted for any damage caused by non-compliance with these instructions or any other improper use or mishandling.

The device has a Lithium-Ion battery. When disposing of this, it should be done in compliance with the rules and regulations in your country of residence.

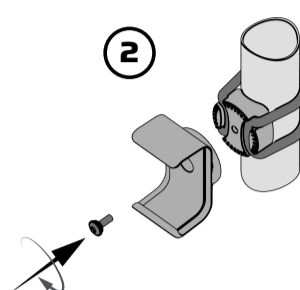
Mounting the bracket

To keep the lights fastened and secure, the rubber rings are provided in two different sizes to provide a snugly wrap around a variety of saddle posts and seat stays.

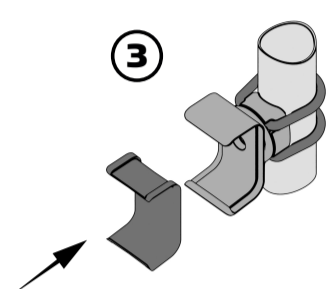
Start by picking one of the two rubber rings best suited for the size of the saddle posts or seat stay.



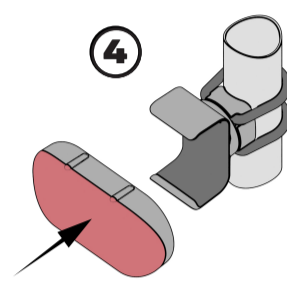
1. Insert one end of the ring into the groove of the bracket (remove the small screw first if it comes pre-installed). Position the bracket on top of the seat post or seat stay. Pull the other end of the ring around the bar and insert it into the other groove. Use the smallest ring possible as this will ensure a more stable mount.



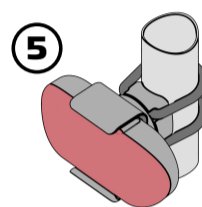
2. Locate the grey rubber pad from the top bracket and mount the bracket on top of the base part. Insert the screw with the small O-ring and tighten it using the included Allen key.



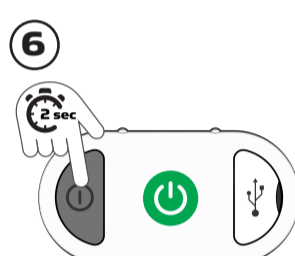
3. Insert the grey rubber pad into the top bracket.



4. Insert the light into the bracket by pushing down as illustrated.



5. Check that the light is securely mounted into the bracket.



6. Turn on the light by pressing the button down for 2 seconds.

Using the light

Please note: When the light is powered on for the first time, the light will be in constant light mode as a factory default. When the light is turned on again, the last used setting will be activated.

1. To power on the light: press the button for 2 seconds.
To power off the light: hold the button for 2 seconds.

2. Press the button to cycle between the different modes: High / Medium / Medium + Flash / Pulse/ Strobe / Eco-flash

3. The brake light is activated as a default form the factory. You can change between three modes by:

A. Turning on the light.

B. Hold the button down for 3 seconds

You can the change between the 3 brake light modes:

1. Bright constant light,
2. Bright strobe light
3. No brake light.

When the brake light is on, whenever it senses a rapid slow down on the bike, the brake light will activate for three seconds.

Eco mode

When the battery charge goes below 10% (charge indicator will flash orange), you can only switch between Constant – Mid and Echo Flash.

Charging the battery

Your GEM+ light comes charged. However, before using it for the first time fully charge the device for maximum results.

Connect the device to power using the supplied USB cable.

The cable has two ends: USB type A and USB type C. Connect the USB type A plug to a standard outlet charger (maximum 1A).

Connect the USB type C plug to the light.

Switch on the power to charge.

When the light is charging, the orange indicator light will illuminate in flashing orange, indicating the device is charging.

When the device is fully charged, the indicator light will turn green.

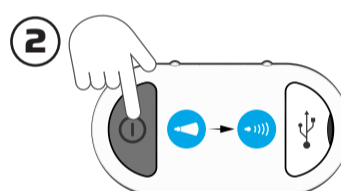
Ensure the rubber seal for the charging port is refitted and seated correctly after each charge.

Battery level indication

Upon powering your GEM+ light, when the lights are powered between 100% and 20% an LED light will show constant green.

When the charge level is between 20 and 10%, one LED will show constant orange.

When the light is powered below 10% , one LED will be flashing orange.



Multifunction

This bike light can be used as a working light or emergency flashlight, adaptable enough to be utilized while biking, hiking, working or other outdoor or indoor activities in darkness. The backside of the light is magnetic and can be attached so most steel surfaces through the magnetic function.

Use & Care

Only use a clean, damp cloth to clean the light unit. If cleaning your bicycle with a high-pressure cleaner, remove the light unit from your bicycle.

If the GEM+ light will not be used for long periods, fully charge the battery, and store it in a cool and dry place. Be sure to fully charge the battery every 3 months.

Trouble shooting

If your GEM+ light malfunctions or fails to operate, follow the steps in this section to identify and resolve possible problems.

If the light does not power on:

Connect the light to power using the supplied USB cable and a supported wall charger.

Check if the LED indicator light flashes orange. If so, the light might have run out of power and will need to be charged before use.

The battery is connected to the battery charger, but the charger's LED indicator does not light up:

Check that you are using a supported USB wall charger, which outputs a maximum of 5V and 1.0A.

If you are experiencing any further problems with your GEM+ lights, please e-mail Reelight at info@reelight.com or call us at (+45) 86 74 24 90.