

USER MANUAL

CONCUSSION LAB LASER HEADLAMP
CNLB-LH-01

SAFETY PRECAUTIONS



PLEASE KEEP THESE IMPORTANT SAFEGUARDS IN MIND WHEN USING THE DEVICE

DANGER



LASER RADIATION
AVOID DIRECT EYE EXPOSURE

MAX. POWER OUTPUT: <5mw
EMITTED WAVELENGTH: 650nm

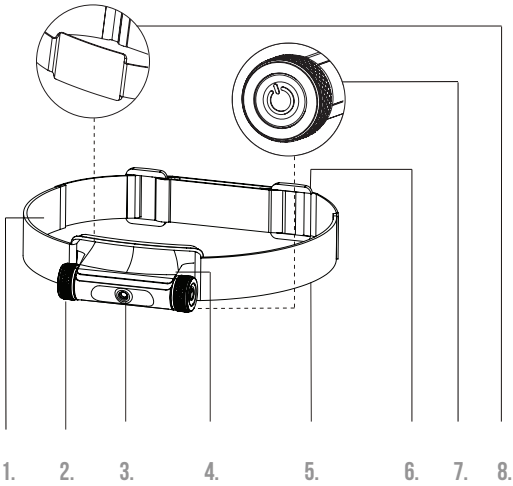
CLASS IIIa LASER PRODUCT

The laser product symbol can be found on the rear panel of the laser housing unit. It indicates that this product is a class IIIa laser product and all direct eye exposure to the laser beam must be avoided. A Class IIIa laser can be momentarily hazardous when directly viewed or when staring directly at the beam with an unaided eye. Risk of injury increases when viewed with optical aids.

Do not leave the headlamp near heat sources, or in a place subject to direct sunlight, physical shock or excessive dust To prevent damage to the unit, do not expose the unit to rain or moisture, or temperature extremes.

This product is not user serviceable.
Do not disassemble the product.

OPERATIONAL INSTRUCTIONS



1. WOVEN ELASTIC NYLON STRAP
2. RUBBER GRIP
3. LASER
4. BLACK TEXTURED PLASTIC MOUNTING CLAMP
5. CUSTOM WOVEN NYLON STRAP
6. BLACK PLASTIC STRAP ADJUSTORS
7. POWER BUTTON ON REMOVABLE LASER ENCLOSURE
8. SOFT FLEECE FABRIC FOR CUSHION SUPPORT

REGULATORY COMPLIANCE

The Center for Devices and Radiological Health (CDRH) is the branch of the United States Food and Drug Administration (FDA) responsible for the premarket approval of all medical devices, as well as overseeing the manufacturing, performance and safety of these devices. The FDA's Center for Devices & Radiological Health (CDRH) Department specifies the requirements for lasers within the United States. Canada references both the US-FDA requirements as well as the International IEC60825 series.

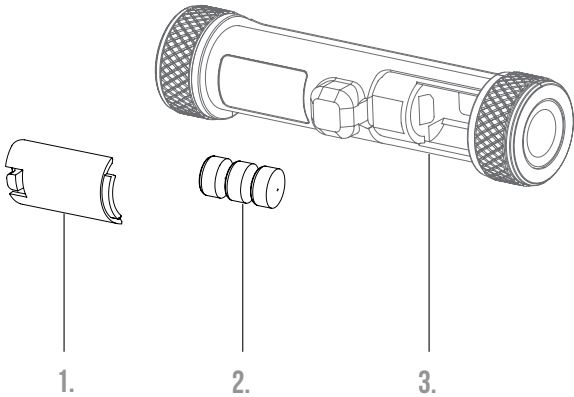
The FCC mark is a certification mark employed on electronic products manufactured or sold in the United States which certifies that the electromagnetic interference from the device is under limits approved by the Federal Communications Commission.

This device complies with ISSED Canada license-exempt RSS standard(s). Operation is subject to the following two conditions: (1) this device may not cause interference, and (2) this device must accept any interference, including interference that may cause undesired operation of the device.

Le présent appareil est conforme aux CNR d'ISDE Canada applicables aux appareils radio exempts de licence. L'exploitation est autorisée aux deux conditions suivantes: (1) l'appareil ne doit pas produire de brouillage, et (2) l'appareil doit accepter tout brouillage radioélectrique subi, même si le brouillage est susceptible d'en compromettre le fonctionnement.

CAN ICES-3 (B)/NMB-3(B)

BATTERY REPLACEMENT



1. LASER COMPONENT - BATTERY COVER
2. LASER BATTERY - A76/LR44
3. BATTERY COMPARTMENT

This device uses 3 X A76/LR44 batteries.

Please refer to the battery manufacturer's instructions for proper care, installation, and disposal of any rechargeable or non rechargeable batteries obtained for use with this device.

Please contact your local municipality for local guidelines and bylaws related to proper battery disposal and/or recycling, if available.

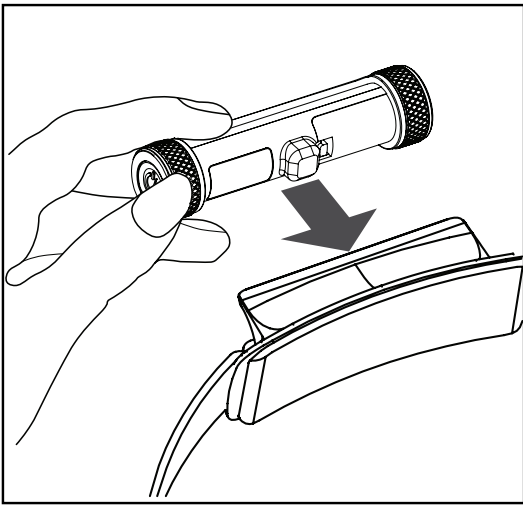
CONCUSSION LAB INC.TM
CONCUSSIONLABINC@GMAIL.COM
615.684.7571

© 2020 CONCUSSION LAB INC. ALL RIGHTS RESERVED
CONCUSSION LAB IS AN UNREGISTERED TRADEMARK OF
CONCUSSION LAB INC.

ILLUSTRATIONS MAY DIFFER FROM THE ACTUAL PRODUCT

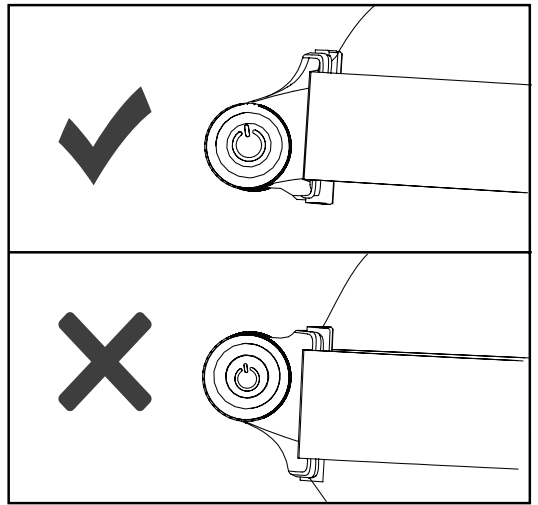
7.

1. INSTALLING DEVICE



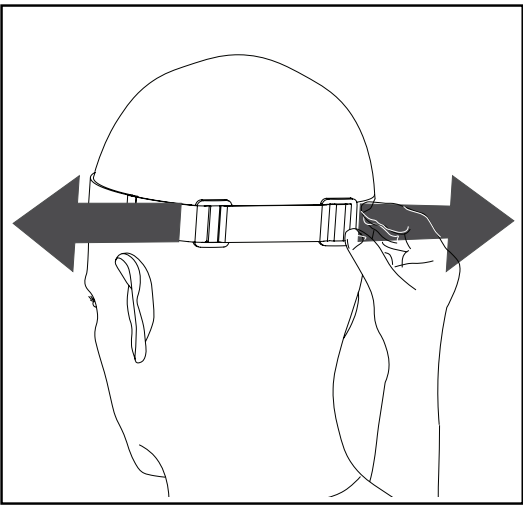
8.

2. ORIENTING HEADLAMP



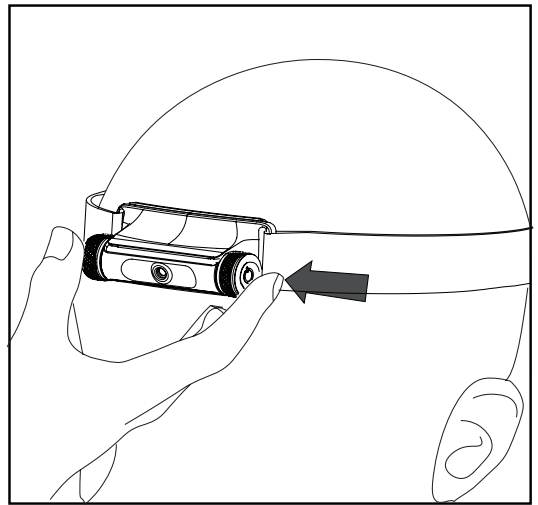
9.

3. ADJUSTING THE STRAP



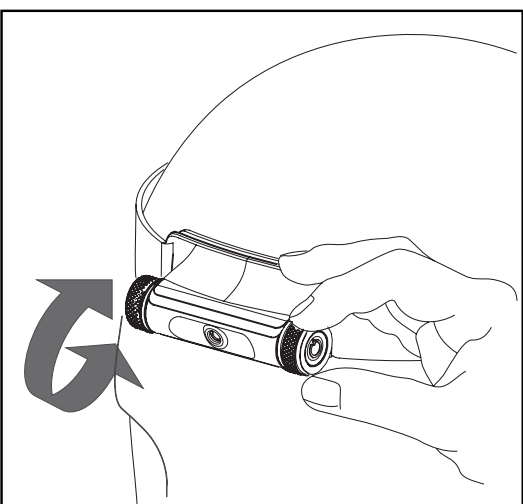
10.

4. POWERING ON/OFF



11.

5. ADJUSTING THE ANGLE



12.

6. BODY AND LASER POSITION

