

LBLA CANADA EDITION

# LOOK 2022 BOOK



LBLA  
*Lashbox Los Angeles*



# HELLO BEAUTIFUL!

We invite you to try some of the best products available to you & your lashes!

To purchase, simply contact your Lash Technician with the products you would like to purchase. They will take care of your order for you & will notify you once your products have arrived.

All prices are in Canadian Funds before taxes.

## AFTERCARE FOR LASH EXTENSIONS

Clean lashes are healthy lashes! Clean lashes will improve retention.

It is important to clean your lash extensions daily.

Cleanse every night to remove debris, makeup, build up etc, with a lash shampoo and cleansing brush. Avoid touching lash extensions with your fingers. Instead used a clean mascara wand to keep your lashes groomed & fluffy. Wait until your lashes are dry before brushing.



# RULES FOR AFTERCARE

*Use oil-free products only*

*Brush lashes daily*

*Get a fill every 2-3 weeks*

*No mascara or sealant*

*Do not use a sauna or sunbed for 24 hours*

*Sleep on your back*

*Do not pick*

*Liquid or powder eye liner only*

*Don't use steam or high heat*

*Do not curl*

*Avoid extreme heat*

*Do not pull*

# BUBBLE LASH SHAMPOO

The ultimate lash cleanser and makeup remover, LBLA's Bubble Shampoo formula was specifically developed with the same pH as your skin to keep eyelids healthy and clean. Gentle and non-irritating, it is perfect for everyday use to remove proteins, oils, impurities, and dust and debris from lashes.

Ideal for daily client use at home and as a professional deep-clean before lash application. Use just half a pump of foam per eye with a lash cleansing brush or Breakup With Your Makeup Remover Mitts. Rinse with cool water, blot dry, and brush lashes into place. Enjoy the cleanest, fluffiest lashes around!



\$40 CAD 150 ml

\$20 CAD 50 ml

# FLUFF GUARD

Our LBLA Fluff Guard is a refreshing eyelash extension cleanser that keeps your lashes fluffy and clean at all times. It is a great way to clean your lashes after applying make-up (to remove any fallen makeup on your lash extensions) or use after a sweaty workout! This oil-free formula, absorbs oils and maintains fluffy lashes.

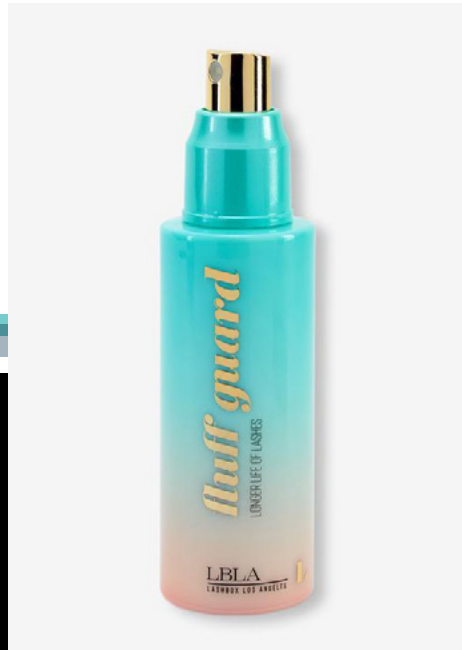
## How To Use:

Spritz the Fluff Guard solution on your Unicorn Duo Brush or Mermaid Duo Brush. Start at the base of the lashes and comb upwards to the tips of your lashes. No need to rinse or pat dry.

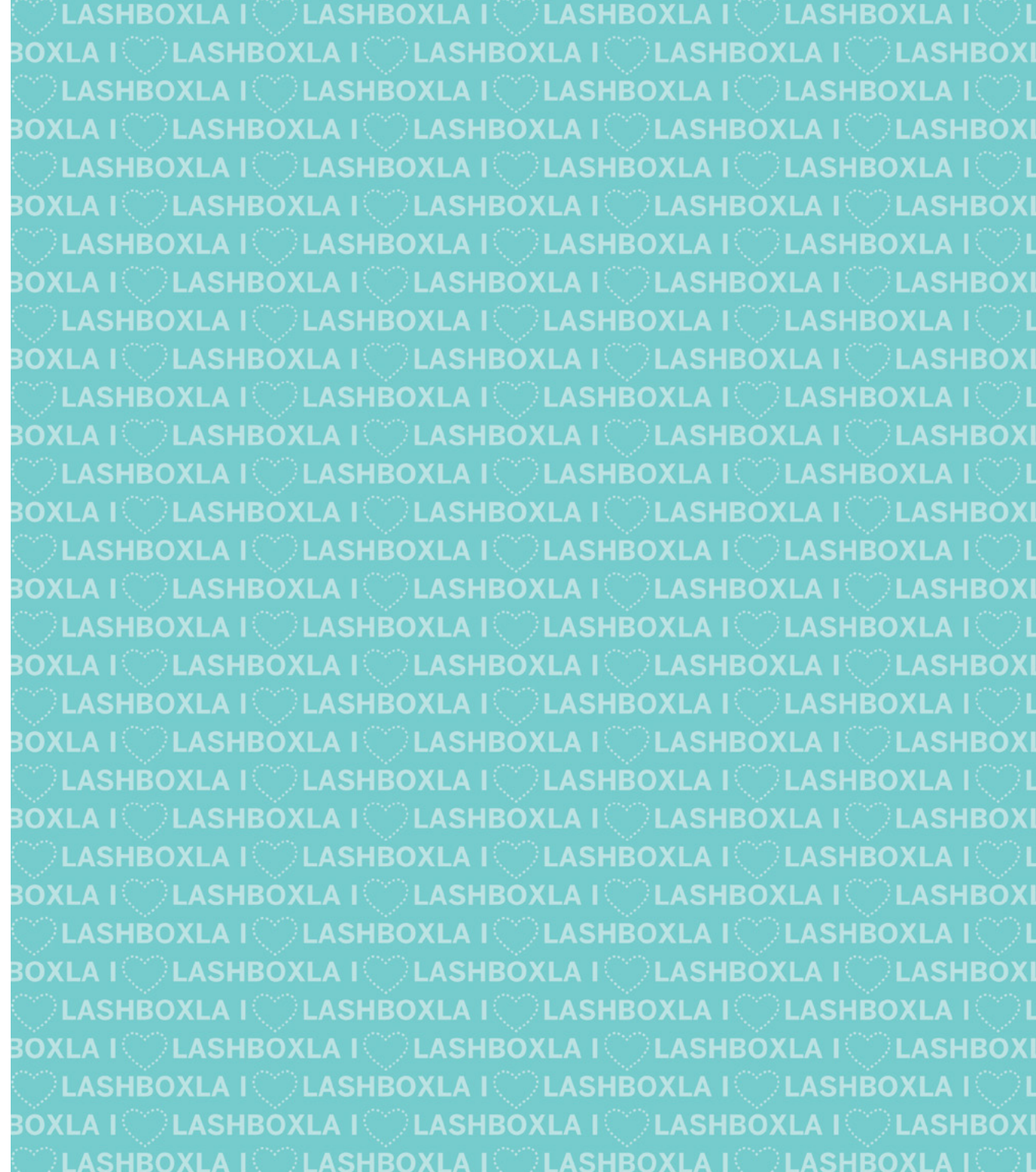
## How is it different from Lash Shampoo?

Our LBLA Fluff guard is a specialty formulated solution (quick fix) to clean lashes from oil, protein make up residue or fall out. It is like dry-shampoo for your lashes! It will remove proteins and oils from your lash extensions. Use whenever you need to fluff up your lashes! Our Fluff Guard does not need to be rinsed or dried.

LBLA Bubble Lash Shampoo & Fluff Guard is the perfect pair to keep your lashes clean & healthy.



\$60 CAD 50 ml



# MERMAID DUO BRUSH

Our Mermaid Duo Brush is specially designed to clean and comb lashes.

It is the perfect tool to use with our Bubble Lash Shampoo and Fluff Guard Cleanser.

Our Mermaid Duo Brush has two golden caps to keep away any dirt and dust particles.



\$16 CAD 1 Brush

# BUBBLE BRUSH

This Bubble Brush is specially designed to clean lashes with our Bubble Lash Shampoo and is an amazing retail item for your clients to take home! The irreplaceable tool you can use during application and throughout the wear of your fluffy lashes.

## How to Use:

Pump Bubble Lash Shampoo 2-3 times into the cap or directly onto a Bubble Brush. Using a downward stroke, start from the base of the lashes to the tip. For a deeper cleanse, gently lather in a circular motion around your lashes and eyelids. Rinse eyes with warm water and tap lashes dry with LBLA's non-woven and lint-free Eyelash Extension Towel. Finish off by gently brushing your lashes with a Teal Bristle Mascara Wand.



\$12 CAD

# BREAK UP WITH YOUR MAKE UP WIPES

Ready-to-go towelettes remove face makeup anywhere, any time - without any irritation. The resealable package makes it perfect for gym, travel, or quick makeup changes.

These wipes contain eyelash extension safe ingredients infused with Vitamin E and Hyaluronic Acid, these are the ideal solution to remove makeup on your whole face before washing your lashes with Bubble Shampoo and one of our cleansing brushes.

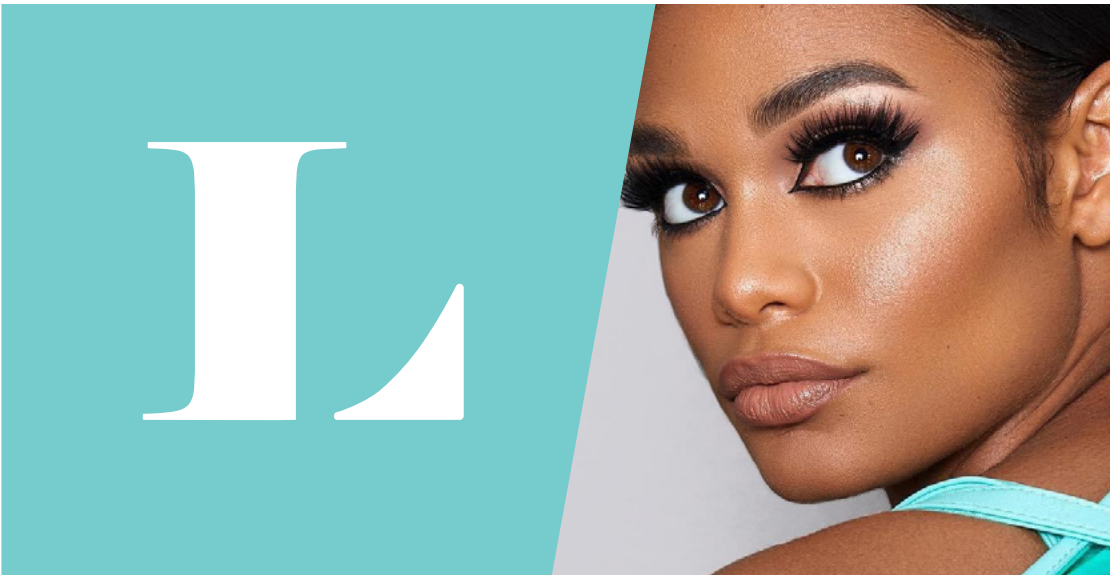
While they aren't for use directly on your eyelash extensions, LBLA Makeup Remover Wipes take the guesswork out of what works for you and your lash-loving life.

## How to Use:

Remove one wipe from the package and ensure it is resealed tightly. Use one wipe to remove all makeup and debris from your face before washing your lashes thoroughly.

\$12 CAD Travel Size (15 count)  
\$30 CAD Regular Size (40 count)





# MAKEUP MADE FOR LASH EXTENSIONS

## EVERLASTING EYELINER

Long-wearing, Everlasting eyelash extension safe liquid liner.

Define your eyes with this deep black or brown liner that glides on for a smooth application and dries smudge proof and water resistant.

Won't build up in lashes or break down adhesives like oil and wax based liners can.

Remove with a brush and eyelash extension safe cleansers or makeup remover.

### How to Use:

Shake well with cap closed before each use. If the tip feels dry or dirty, wipe it off with a wet tissue before use. Recommended to be stored horizontally on flat surface.

If eyeliner is not flowing well, shake well and place the pen tip-side down for a few minutes, or apply a few strokes on hand until a smooth flow is achieved.

- Effortless control
- Glides on smoothly
- No pulling or tugging on extensions
- 0.4mm tip for an ultra-fine, sleek line
- Provides full color in one stroke
- Wears for 12 hours



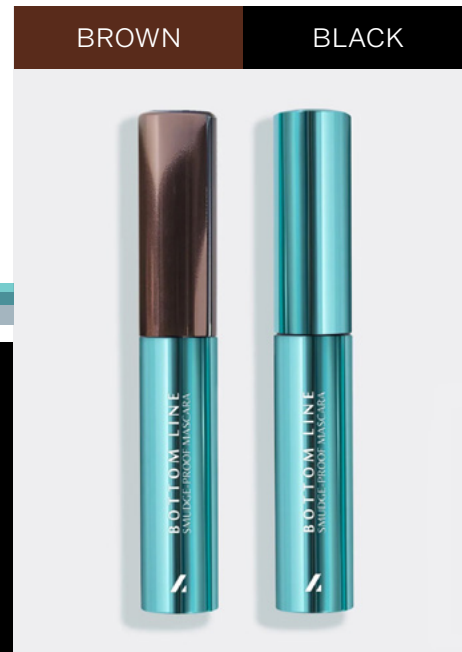
# BOTTOM LASH MASCARA

Achieve perfect bottom lashes, every time! This mascara is perfectly formulated to be paired with eyelash extensions! No, not on top of them, but as a compliment to them!

Our LBLA bottom lash mascara creates the lower lash line you want. Our tiny application brush gives you control over your preferred look with a build-able, oil-free formula that isn't technically waterproof ('cause we need to wash those babies!) but is smudge-proof and won't build up on upper lashes. This mascara doesn't affect the retention of your upper lash extensions. No more panda eyes, just perfect lower lashes!

For a lighter, more natural look, apply mascara by gently wiping the wand down along your natural lower lash growth. Add a layer (or 3!) for a slightly bolder look.

For a more dramatic appearance, apply mascara in a side-to-side motion across the lower lashes. This will create a "spikier" look.



\$30 CAD

# FAUX MINK 3D STRIP LASHES & DOUBLE LAYERED VEGAN MINK STRIP LASHES

These 100% Cruelty-free Mink lashes are the perfect option in comfort and wear for when you need lash-impact, and need it now. These 100% Cruelty-free Mink lashes are the perfect option in comfort and wear for when you need lash-impact, and need it now. Extremely soft and perfectly finished fibers from base to tip will make you wonder if they really are real fur, but they're not!

These 5-D multidimensional ultra-fluffy multi layered lashes will take you from zero to glam in no time flat with an impressive range of styles to fit any mood! What's more, they have been specially created with a soft-covered cotton band that guarantees comfort that lasts for 15 wears when used with care.

Enhance your natural beauty! Various styles to choose from.



\$36 CAD



# LBLA'S LACE IT UP SYSTEM

Everything you need in one place to start Lacing It Up! If it's your first time with our sexy little secret, this kit is a must to get the most out of application and extra long-wear. Lace It Up Lashes and tools work as a system to bring you the fluffiest, fullest look you can get with under-lash application for DIY lash extensions at home or have your lash technician or makeup artist apply them for you for those special occasions!

It includes two different lash curls in either Short, Medium, or Long so that you can find your favorite effect - to be used alone or mixed for extra texture. Their soft cotton-covered band ensures that you don't even feel them during wear, and provide a multi-layer texture for the look of professional lash extensions! Our superior Duo glue applies like a mascara for you to attach these lashes where they will be most comfortable and least noticeable - under your lash line.

The no-nonsense applicator has the perfect curve to follow the shape of your eyelid and is comfortable to use with an easy-squeeze grip that bonds your lashes together in seconds.

Lashes that last for days with a bandless look that rival real extensions? Don't worry, we won't tell - it can be your secret now, too!

## All kits include:

- BCurved Lash Applicator
- Lash Eraser
- Micro swabs
- Precision Bond Duo Lash Adhesive
- Two trays of Lace it Up Lashes in C & D

THREE KITS TO CHOOSE FROM:  
SHORT, MEDIUM, & LONG



\$240 CAD

# LBLA COSMETIC & CO EYELASH EXTENSION FRIENDLY EYELIXIR SHADOWS

LBLA's Eyelixer comes in an assortment of colours which in matte, shimmer, or metallic and are saturated with colour that payoff in just one coat. They are waterproof, long-lasting, crease-free, and non-tacky. Our proprietary formula glides onto eyes in seconds and offers extreme longevity—up to 24 hours—and remains crease-free. LBLA's Eyelixer are safe to use with eyelash extensions.

LBLA's Lash Eraser allows Lace It Up & Strip lash glue to glide right off your natural lashes with zero harm or damage.

Gently dissolve and lift away strip lash glue from your lash line without rubbing, tugging, or pulling your skin and natural lashes.

\$35 CAD



# BE NAKED LINE

Get ready to freshen up your skincare & cleansing routine with LBLA's Be Naked line. An innovative collection of at-home eye & lash care that is perfect for lash extension wearers, as well as strip lash & Lace It Up users in between lash wears!

## Be Naked Regenerating Eye Contour Masks

Each package includes a set of 5 luxurious under-eye masks that leave skin feeling lusciously hydrated. Specifically formulated for even the most sensitive skin. Price \$35

## Be Naked Gel Cleanser

Strip Away impurities & protect your eyes with this oil-free, PH-balance gel cleanser that keeps infections away with a blend of tea tree extract, chamomile, aloe vera, and green tea extract. Price \$65

## Be Naked Micellar Water

Micellar Water provides your skin with the necessary levels of hydration and energy to keep it looking radiant. This peptide infused formula conditions and supports natural eyelash and eyebrow growth with natural plant extracts that condition and restore for a healthy skin barrier. Great for all skin types. Signature Arnica Extract delivers antibacterial and anti-inflammatory properties to soothe skin and promote eye health. Price \$65





# NATURAL LASH CARE PRODUCTS

## KERATIN LASH BOOSTER

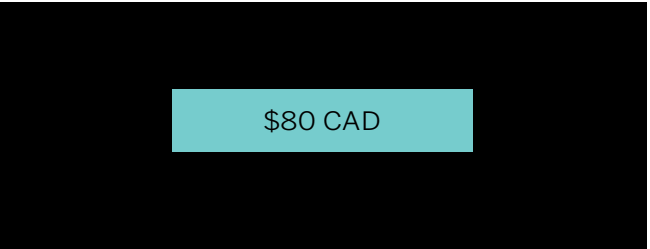
LBLA Keratin Lash Booster is a hydrolyzed keratin lash-mask that strengthens and nourishes natural lashes with Argan oil, proteins, keratin and vitamins. This nourishing mask fills the natural lash with keratin - making your natural lashes thicker, fuller and longer. They will naturally start to appear longer and more curled without any damage to them at all; on the contrary - your lashes will be stronger and more resilient to damage!

The perfect in-home treatment when sold as retail or a great add-on treatment for lash lifts and brow lamination or lash extension removal as a conditioning treatment to see amazing regeneration. Keratin Lash Booster should be applied to stressed lashes or brows to allow its vitamin-rich formulation visibly thicken and moisturize the hair shaft. Since eyelash hair consists of 96% of Keratin, Lash Booster consists mostly of hydrolyzed keratin (in such small particles it has access to the thinnest lashes) and collagen, a natural nourisher.



Keratin Lash Booster recommended client use is daily at-home application over the course of 2 weeks. The treatment results last for an additional 2 weeks and will wash away a little with each lash cleaning, similar to hair keratin treatments.

For professional treatment apply a generous amount and leave for 3 minutes before thoroughly wiping away product that wasn't absorbed by lashes with micro tip swab.



\$80 CAD

# LASH ACCELERATOR MD

## Gorgeous Results, Clinically Proven. Lash Extension Safe.

LashBox LA's Lash Accelerator Serum MD is effective and efficient. Dermatologist and ophthalmologist tested and approved. Our nutritive serum effectively strengthens, thickens, and fortifies eyelashes and eyebrows, while its proprietary complex of active ingredients condition and soften lashes and brows.

The Secret Sauce includes a Peptide Complex that supports growth making lashes that are longer and thicker, Euphrasia Plant Extract to strengthen and rebuild damaged lashes, and Panthenol (Provitamin B5) & Pumpkin Seed Extract for hydration. See real results in less time!

## How It Works

Lash Accelerator MD works to repair chemical, thermal and mechanical damage, sometimes caused by cosmetics and treatments, and nourishes to repair broken bonds so your lashes and brows can actively defend against harm.

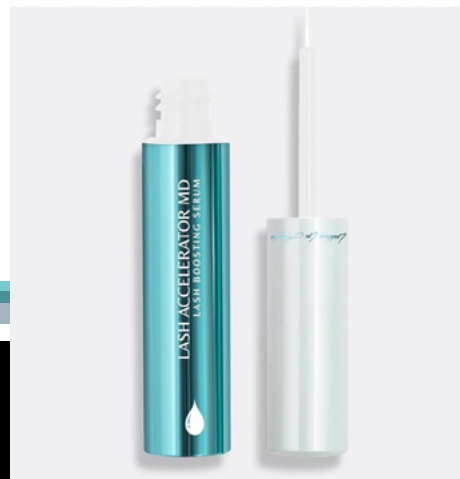
It then stimulates the hair follicle to encourage natural growth for full, healthy, and strong results.

Finally, it activates elasticity and strength may begin to be rapidly unlocked for full lash and brow growth stimulation. Your natural, glamorous, healthy lashes and brows are here to stay.

## How to use:

Apply a small amount of the product to clean eyes and lids at the base of your eyelashes each night with just one stroke of the applicator. Great for use on both lashes and brows. Should the product come into direct contact with the eyes, rinse thoroughly with water. Use daily for 4-8 weeks, and 2-4 times a week thereafter to maintain results.

The first results can be seen after 2-4 weeks, with maximum results achieved with approximately 8 - 12 weeks of treatment.



\$90 CAD



# AFTERCARE KITS & ACCESSORIES

# AFTERCARE KIT

LBLA's Aftercare Kit includes everything you need to keep wink-worthy lashes full, fluffy, and beautiful! Clients will love this kit and all it contains just as much as you love them looking after their lashes properly. With all these must-haves wrapped up in a chic space-saving and eco-friendly bag, you won't be able to keep them on your retail shelves. Purchase this kit instead of all the same items separately. Perfect up-sale for your clients. Clean, happy, fresh lashes are just one click away.

## Aftercare Kit includes:

- Beak Up With Your Wipes - Full Size
- Bubble Wash Shampoo - Full Size
- Fluff Guard
- Mermaid Duo Brush
- Mermaid Duo Brush
- Makeup Remover Mitts
- Micro swabs
- Beauty Bag

\$275 CAD



# GO GLAM!

Your perfect aftercare kit for all things clean!

Go GLAM and keep your great lash retention all at the same time. LBLA's Everlasting Eyeliner lets you get BOLD, while Fluff Guard cleans up those lashes from makeup smudges and fallen eye shadow. Our famous Bubble Lash Shampoo is accompanied by our Breakup with Your Makeup Mitts and a Mermaid Duo lash cleansing brush to bring your lashes back to their happiest, cleanest, freshest set possible. A retail must!

## Glam Box includes:

- Break Up with Your Makeup - Makeup Remover
- Mitts Bubble
- Wash Shampoo
- Everlasting Eyeliner
- Fluff Guard
- Mermaid Duo Brush

\$195 CAD



# BEAUTY BAG

The ultimate grab-and-go bag that allows for total versatility. From makeup and lashcare to beach supplies and bikinis, this carry-all eco-friendly bag gives all the understated cool vibes, while being soft, collapsible, and ultra durable. The perfect size to toss in your carry on - empty to save space, or full for optimal organization. Pack anything you need for a short or long distance trip, knowing it'll stay safely zipped up all in one place.

**Bag Size:**

12" x 2.5" x 7.5"

L B L A C A N A D A E D I T I O N

\$30 CAD



# LBLA COURSES



BEGINNER CLASSIC COURSE .....	\$1585
INTERMEDIATE VOLUME .....	\$1585
ADVANCED MEGA VOLUME .....	\$1365
VIRTUAL CLASSIC & MEGA VOLUME .....	\$630
ONLINE MENTORING .....	\$200

L O O K 2 0 2 0 B O O K

LBLA  
*Lashbox Las Angeles*

# LOOK2022BOOK

LBLA CANADA EDITION

**DEANNA WEBB**

Managing Director & Official Distributor Canada

[info@lashboxlacanada.com](mailto:info@lashboxlacanada.com)