

lash care  
NEVER LOOKED  
SO GOOD

20%  
EXTRA



why lash artists  
AND CLIENTS LOVE  
THIS DUO

- Improves your skin and eye health
- Gentle and non-irritating formula
- Formulated with the same pH as your skin
- Increases retention
- Reusable soft-cleansing brush
- Meets TSA liquid carry-on bag requirements
- Elevates any retail shelf
- And now includes 20% MORE in each bottle



the  
INGREDIENTS  
WE LOVE

BUTYLENE  
GLYCOL



Hydrating,  
conditions and  
smooths

LACTIC  
ACID

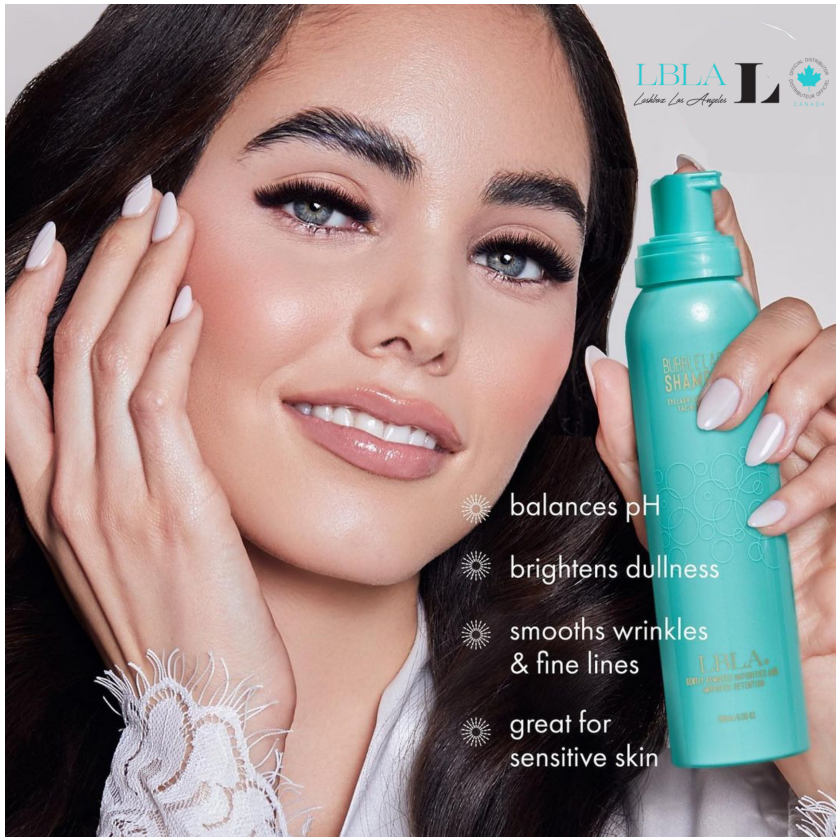


Brightens skin,  
smoothes fine  
lines

SODIUM  
CITRATE



Balances  
skin's pH



LBLA  
Lashcare Los Angeles



- ☼ balances pH
- ☼ brightens dullness
- ☼ smooths wrinkles & fine lines
- ☼ great for sensitive skin

## *Rules for Aftercare*

- Use oil free products only.
  - Do not pick or pull on your lash extensions.
  - Get a fill every 2-3 weeks.
  - Brush lashes daily.
  - Do not use mascara or a sealant on your lash extensions.
  - Do not curl your lash extensions.
  - Do not use a sauna or sunbed for 24 hours after application.
  - Do not use steam or high heat near your lash extensions.
  - Avoid extreme heat.
- 
- Cleanse daily. Just use half a pump of foam per eye with a cleansing Bubble Brush. Rinse with cool water, blot dry, and brush lashes into place. Brush again once dry for the cleanest, fluffiest eyelash extensions around!