

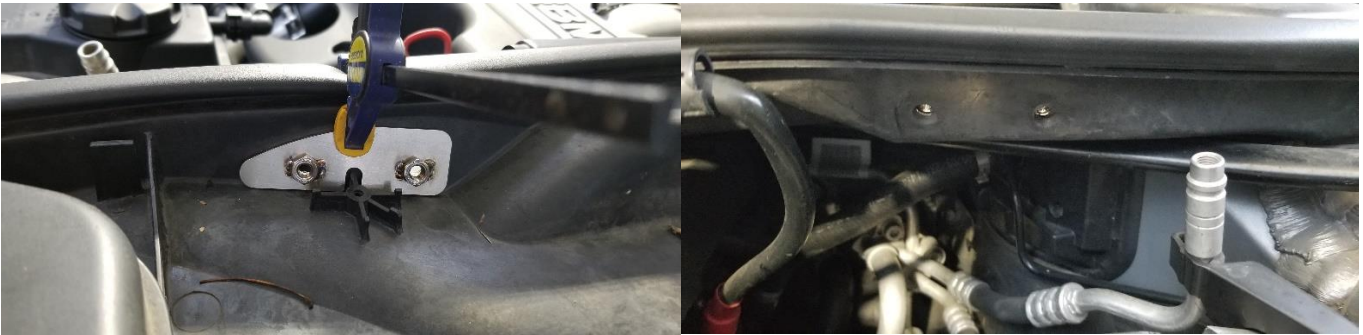


## 335D Fuel Filter/Water Separator Install Instructions

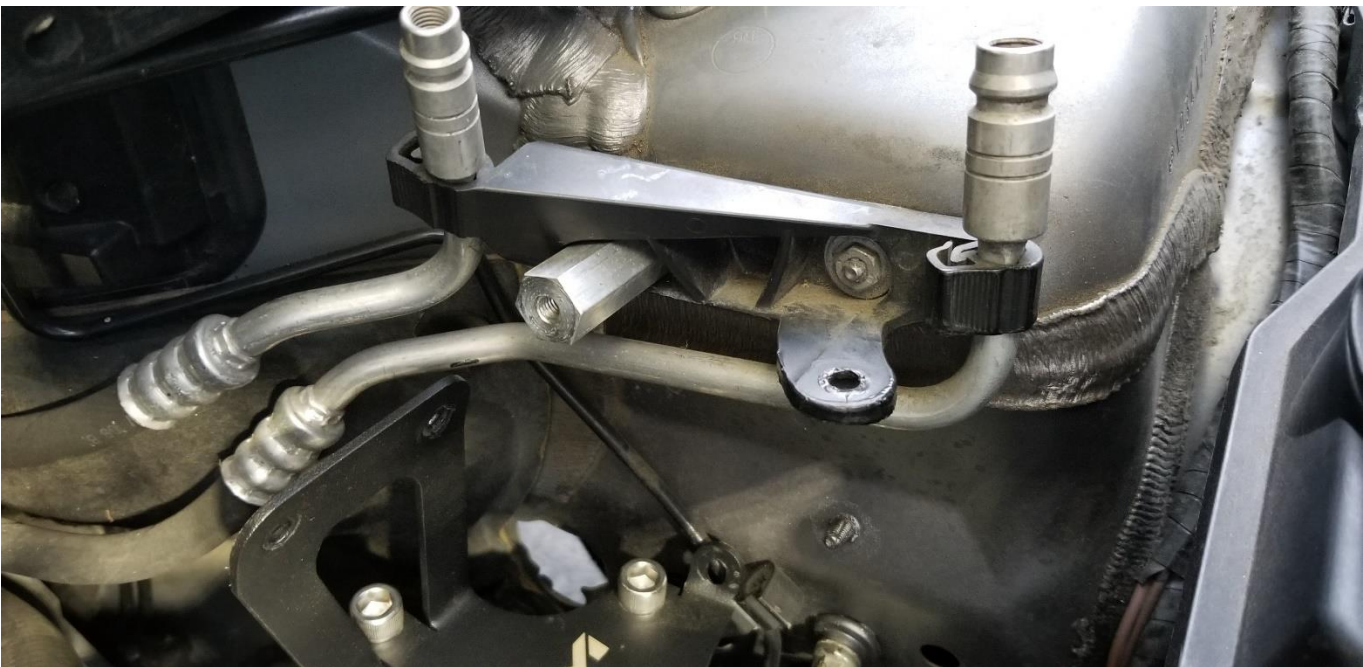
**\*\*Be sure to keep components free of any contamination while working with an open fuel system\*\***

1) Remove cabin filter on cowl

2) Place backer inside cowl as shown and use as a template to drill 2 holes. Open up hole size to clear 6mm/¼" bolt.



3) Remove nut on AC line bracket and replace with hex standoff and tighten.



4) Put filter bracket assembly in place to check cowl hole locations. If needed they can be enlarged to aid with fitment. Do not mount assembly at this time.

5) Run hoses as shown. Supply hose (plastic connector end) should be placed over top of AC and coolant hoses and run down towards the firewall. Outlet hose (metal elbow end) should run above the engine mount as shown.



6) Disconnect factory quick release fittings and connect respective ends to filter hoses.





7) Use included clamp to connect outlet hose to hard line as shown.



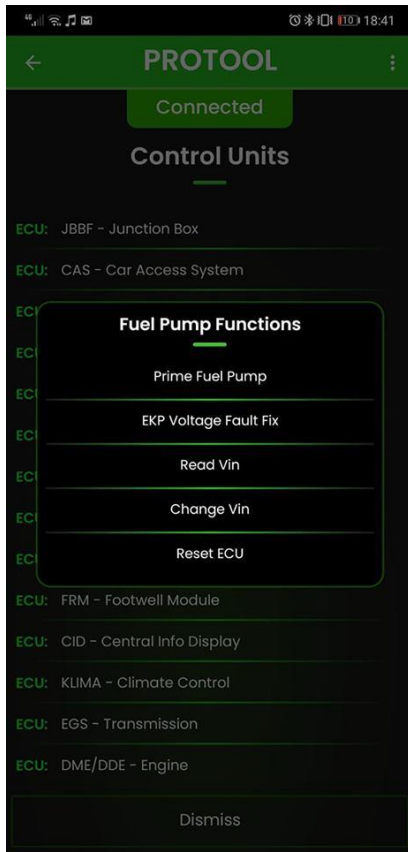
8) After confirming safe routing of all hoses, mount filter assembly and tighten. **\*\*Insure there is adequate clearance between all hoses, especially in relation to steering shaft\*\*** If needed loosen outlet elbow at filter housing and reposition.



9) Install filter if not already done so. Smaller rubber washer goes on housing threads first. Use lubricant on rubber o-ring surface

10) Keeping all lines connected, prime the fuel system until all air is audibly gone. This can be done using a capable scan tool, ISTA or equivalent, the ProTool app, etc. See below

<https://www.e90post.com/forums/showpost.php?p=17670722&postcount=90>



\*\*If you do not have these options it is possible to jump the in-tank fuel pump using the method found in this thread:

<https://www.e90post.com/forums/showthread.php?t=1159084>

11) Check for leaks

12) Start vehicle and enjoy!