

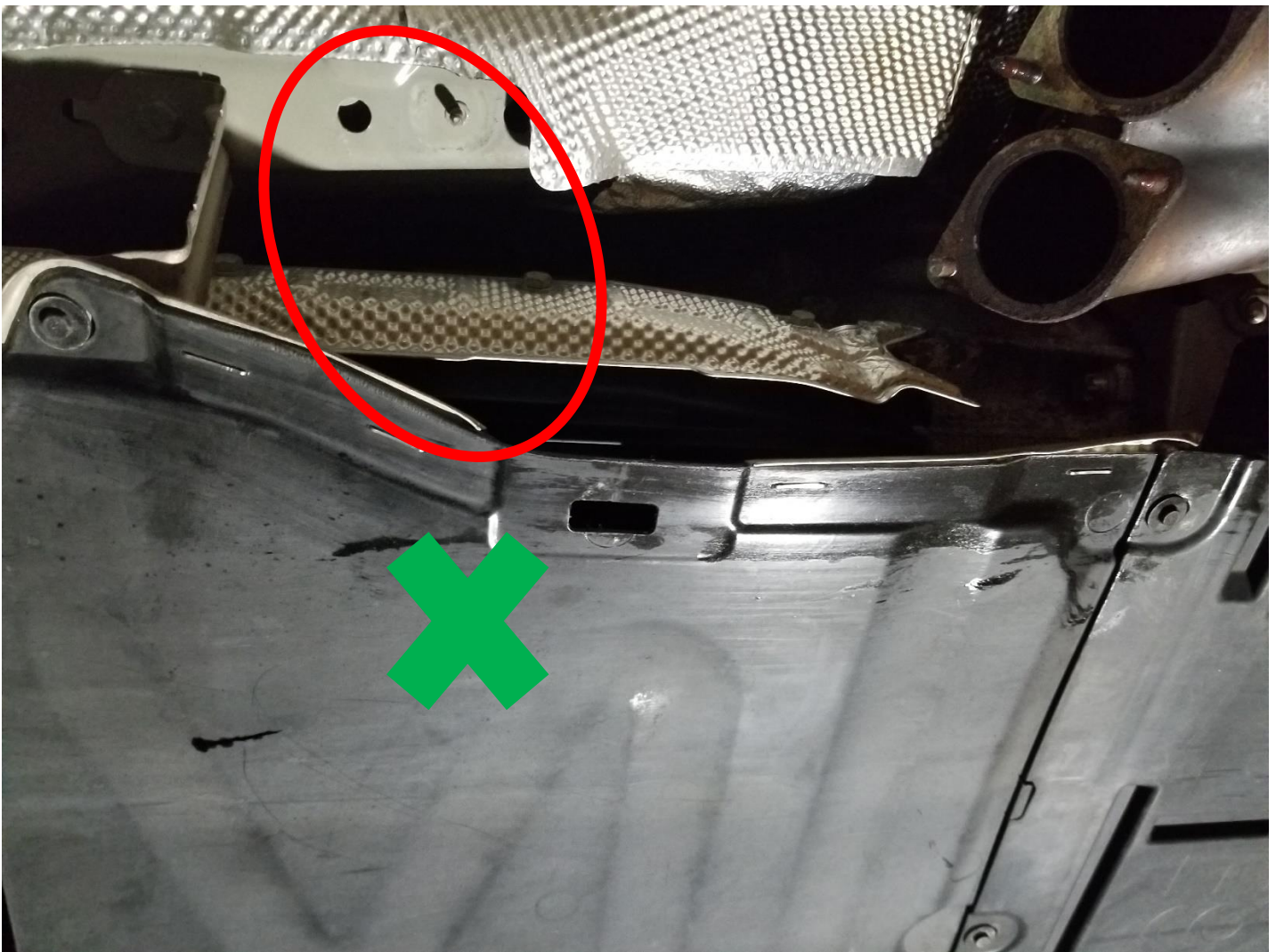


335i 3.5" Race Exhaust Install Instructions

****Application of anti-seize lubricant on all band clamp threads is recommended to prevent thread damage and loose clamping****

1) Remove factory exhaust including hangers and exhaust trans bracket

2) Remove plastic trans shield (X) and bracket (O)



3) Test fit front Y-pipe. Note where flex-joints are positioned in relation to floor heat shield and remove Y-pipe. Push heat shield against floor as needed to make necessary clearance.

4) Working on trans shield, install stiffener brace by inserting tabbed end into backside of existing metal clip. Replace shield and fasten both ends using factory hardware. Use supplied M6 bolt and large washer to secure center through the rectangle window in the plastic shield



5) Bolt up Y-pipe to downpipes using supplied M8 hardware and gaskets. Bolts can be installed in either direction that is accessible for allen wrench, use supplied lock washers against nuts and tighten. Rear placement of Y-pipe will be adjusted later with the supplied mount.

6) Remove nut and trans mount from 3.5" band clamp, add anti-seize to threads and install band clamp onto front Y-pipe. Place midpipe onto slip-joint, orient clamp and midpipe to approximate location shown and snug band clamp. Clamp location will be fine-tuned once remainder of the exhaust is installed.



7) Attach rear midpipe using supplied V-band clamp. Tighten clamp just enough to hold pipes in place but allowing rotational movement for adjustment. Adjustable hanger can be placed in the mid position as shown and fine-tuned later.



8) Rear Y-pipe can now be attached using supplied V-band clamp. Ensure orientation is tucked up towards the trunk, not downward.



11) Confirm rear midpipe placement is correct (centering between diff and suspension arm will be adjusted later), level rear Y-pipe as close as possible and tighten V-band clamp. Midpipe hanger can also be adjusted if necessary to provide proper clearance.

12) Add anti-seize to clamp threads and install tailpipe clamps and brackets in the configuration shown. Bolt factory hangers to the brackets using the existing bolts as shown. Insert tailpipe elbows and snug band clamps up enough to hold the Y-pipe center and confirm exhaust placement between diff and suspension arm.



13) Tailpipe elbows can now be adjusted in and out as well as up and down as needed. If overall height of the Y-pipe needs to be adjusted band clamps can be rotated to raise/lower system. The tailpipe elbows should be centered with the bumper cutouts as closely as possible. Fully tighten band clamps.



14) Install tips with clamps and adjust as necessary. Tighten.



15) Check entire system for clearance and adjust if needed. Ensure all clamps/brackets are tight.