

EquipMaxx®

AQUASPRAY PRO 16

BACKPACK WATER TANK



Read instruction manual before use!

CONTENTS

1. Tank Diagram	2-3
2. Specifications	4
3. Other Important Considerations	5
4. Set Up Your Tank	5
5. Using the Tank	6
6. Cleaning and Storing	6
7. Warranty & Customer Service	7

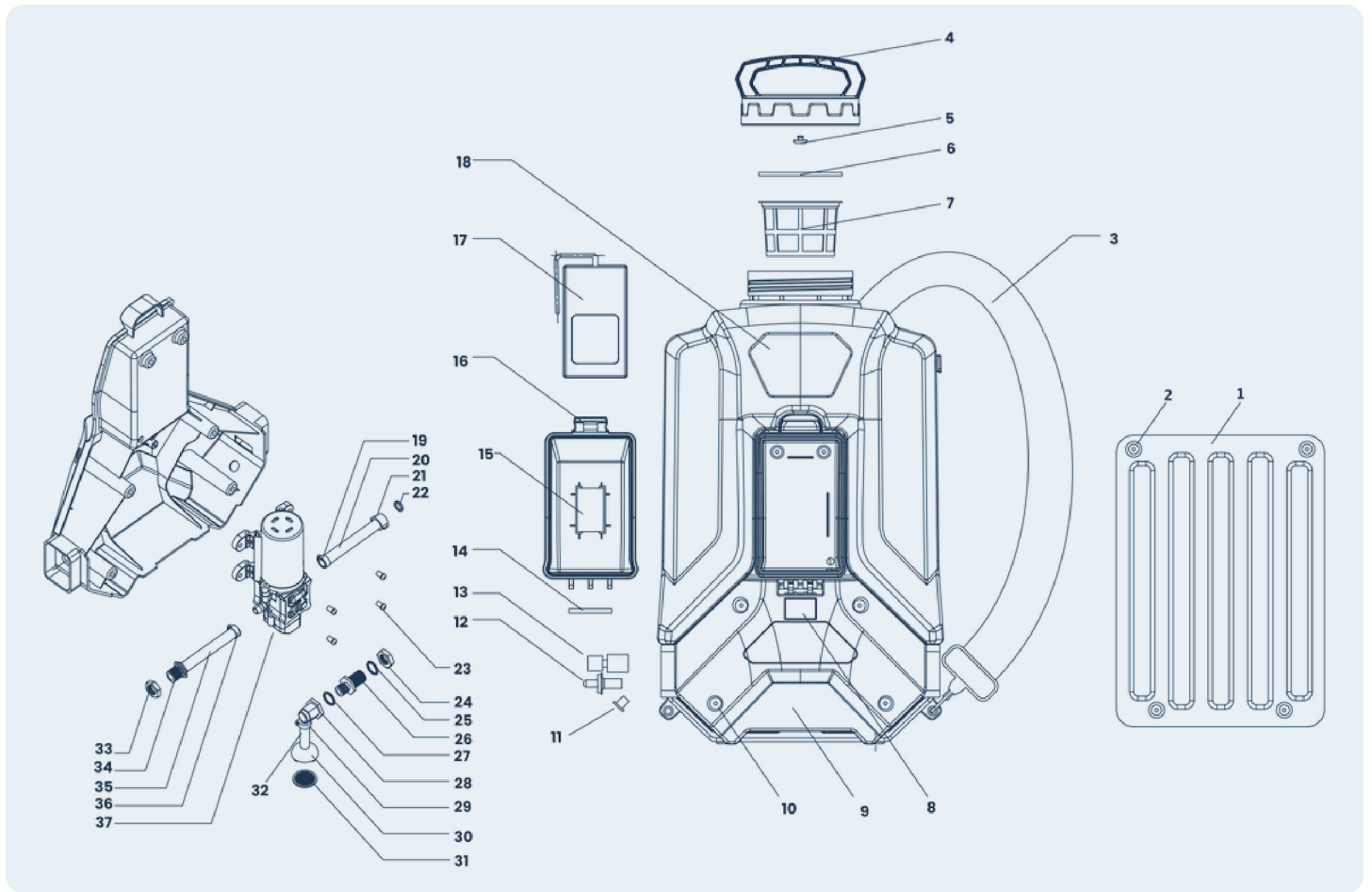
Thank you for purchasing from Equipmaxx. Read and follow this manual carefully to ensure that you get the most out of your new pumping tank. Please keep it in a safe place for future reference.

We are continuously improving our products to ensure more convenient, efficient, and safe usage. We are committed to providing you with the best products and services at all times.

We look forward to hearing about your experience with our product and if at any time you require immediate assistance, please call us at 1-800-349-9795 or send us an email to service@equipmaxx.com.

Bryan Watson
President

TANK DIAGRAM



No.	NAME	QUANTITY
1	Back Plate	1
2	Cross-recessed big head screw (5 x 8mm)	4
3	Strap	2
4	Tank cap	1
5	Inlet Valve	1
6	Seal	1
7	Filter (114mm)	1
8	Digital Voltmeter	1
9	Pump fix box	1
10	Cross-recessed big head screw (5 x 10mm)	6
11	Recharge socket	1
12	On-off switch	1

TANK DIAGRAM (CONT'D)

No.	NAME	QUANTITY
13	Speed controller	1
14	Plastic pin	1
15	Battery storage cover	2
16	Sealing strip	3
17	Lithium battery	4
18	Tank cap	5
19	Clamp (19mm)	6
20	Water inlet	7
21	Wing nuts	8
22	Gasket (7 x 12mm)	9
23	Cross-recessed big head screw (4 x 12mm)	10
24	Hexagon screw	11
25	O-ring (17 x 2.6mm)	12
26	Hexagon bolt	13
27	O-ring (18 x 2mm)	14
28	Elbow	1
29	Clamp (14mm)	1
30	Suction socket	1
31	Suction filter	1
32	Short suction tube	1
33	Hexagon screw	1
34	Hexagon bolt	1
35	Short drain tube	1
36	Clamp (19mm)	1
37	Pump	1

SPECIFICATIONS

Battery Type	Lithium-ion
Battery Voltage	12V
Battery Capacity	8AH
Pump Type	Diaphragm
Package size	13.2 x 10.2 x 23 in.
Tank Capacity	4 Gallons / 16L

The Aquaspray Pro16 Water Tank is powered by a lithium-ion rechargeable battery and is driven by a diaphragm pump, which pressurizes the water flow. The tank holds 4 gallons (16 liters) of water and can operate for up to 4 hours on a full charge. (working time may vary based on battery capacity.)

IMPORTANT

THE TANK'S MOTOR IS DESIGNED WITH A DIAPHRAGM PUMP. EXPOSURE TO, OR STORAGE IN EXTREME HEAT CAN CAUSE THE DIAPHRAGM TO JAM, MAKING THE PUMP INOPERABLE. ALWAYS STORE THE TANK IN AN AREA WITHOUT EXTREME HEAT (GREATER THAN 90F) OR COLD (LESS THAN 32F) TEMPERATURES TO MAINTAIN THE PUMP'S FUNCTIONALITY. IF THE PUMP TURNS ON BUT DOES NOT WORK, PLEASE CONTACT OUR CUSTOMER SERVICE DEPARTMENT AT 1-800-349-9795 OR SERVICE@EQUIPMAXX.COM.

OTHER IMPORTANT CONSIDERATIONS



PUMP DAMAGE RISK

Do not operate without liquid in the tank. This may damage the pump.



SPECIALIZED SOLUTIONS

Never operate with strong acids, strong bases or flammable liquids.



EXTENDED CHARGING

After long periods of time without use, the battery may have a low voltage and will require extended charging.



KEEP OUT OF REACH!

Do not leave the pumping tank in reach of children or persons not qualified to handle it in a proper fashion.



MAX TEMPERATURE

Never fill the tank with hot liquids (max. temp 85°F).



ORIGINAL PARTS

Always use the original replacement parts.



PROTECTIVE GEAR

Always wear protective clothing, a respirator, gloves, eye protection, etc., when using chemicals.



TEMPERATURE LIMITS

Don't operate pumping tank in temperatures above 100°F or below 32°F.

SET UP YOUR TANK

1

STEP ONE

Remove any small parts from the intake filter.

2

STEP TWO

Attach each metal loop on the backpack straps to the bottom two loops on the tank.

3

STEP THREE

Loop each fabric strap through the top loop of the tank and thread back through the bottom side of the buckle.

USING THE TANK

STEP ONE

Make sure the battery is fully charged before the first use. A flashing red light on the charger indicates that the battery is charging. Once it turns green, the battery is fully charged.

STEP TWO

Fill the tank with water through the intake filter and securely tighten the tank cap.

STEP THREE

Turn the pump on by flipping the switch on the side of the unit. Flipping the switch to "I" will activate the pump at high speed. Flipping it to "II" allows for adjustable pump speed.

STEP FOUR

Control the flow of water to the waterfed pole and start cleaning!

CLEANING AND STORING

1 STEP ONE

After use, completely drain and empty the tank. Ensure the tank is thoroughly cleaned.

2 STEP TWO

The external parts of the tank can be cleaned with a damp cloth.

3 STEP THREE

Store the tank in a dry, cool place away from heat, direct sunlight, and children.

4 STEP FOUR

For long-term storage, regular discharging and recharging of the battery is required (with an interval of either every 2 weeks, one month, or two months) to maximize battery life.

WARRANTY & CUSTOMER SERVICE

The AquaSpray Pro16 Water Tank Backpack accessories and housing are warranted to be free from defects in material and workmanship for a period of **One (1) year** from the date of purchase when utilized for normal household use by the original purchaser only. This does not include the replacement of items due to wear. To initiate a warranty claim, the original purchaser must email service@equipmaxx.com with the following information: order number, original purchase date, and description of the issue or defect. Please attach clear images or videos, if applicable, illustrating the issue or defect.

If you have any questions or concerns, feel free to call us directly at **1-800-349-9795** or send us an email at service@equipmaxx.com.