

# Ampatex® Cento



▀ Vapour check and airtight layer



- $s_D$ -value >100 m
- Very high stability and tear strength
- Does not shrink or stretch
- Translucent
- Recyclable

## Ampatex® Cento



### Roll dimensions

Length: 50 m / Width: 1,5 m / Area: 75 m<sup>2</sup>

### Pallet details

24 rolls = 1'800 m<sup>2</sup>


### Technical details:

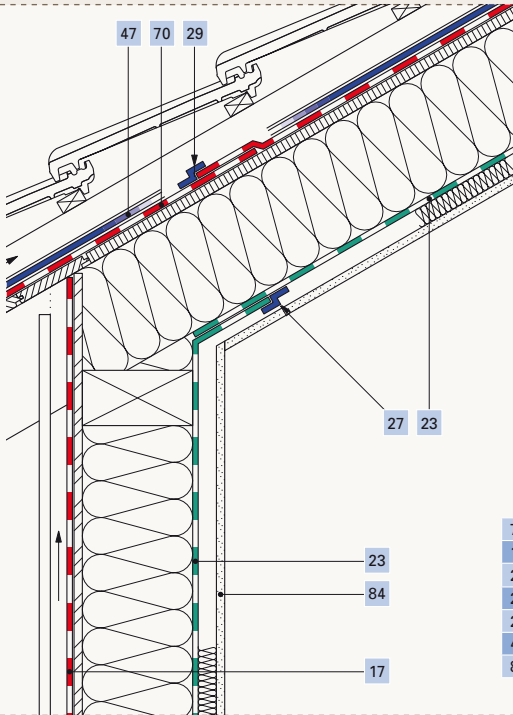
$s_D$ value	>100 m
Weight	170 g/m <sup>2</sup>
Thickness	0.27 mm
Fire behaviour	E
Tear resistance	
longitudinal	160 (± 30) N/5 cm
transverse	150 (± 30) N/5 cm
Tear elongation	
longitudinal	500% (±15%)
transverse	750% (±15%)
Resistance to water penetration	passed
CE marking	EN13984:2005-02/200

# 10

Jahre Garantie\*  
Ans Garantie  
Anni Garanzia  
Years Warranty

\* Security is part of the system at Ampack. We cover the cost of removal and replacement, and consequential damage, as well as the replacement materials.

 **ISO 9001:2008**  
Swiss Research



70	Ampack roof membrane
17	Ampack wall membrane
23	Vapour check <b>Ampatex® Cento</b>
27	Adhesive tape <b>Ampacoll® INT / Ampacoll® AT</b>
29	Adhesive tape <b>Ampacoll® XT, 60 mm</b>
47	Nail seal <b>Ampacoll® ND.Band</b>
84	Cladding

The following products are suitable for application on **Ampatex® Cento**:

- ▶ Ampacoll® XT
- ▶ Ampacoll® AT
- ▶ Ampacoll® INT
- ▶ Ampacoll® Profix
- ▶ Ampacoll® FE
- ▶ Ampacoll® DT
- ▶ Ampacoll® RA
- ▶ Ampacoll® BK530
- ▶ Ampacoll® BK535
- ▶ Ampacoll® Connecto

## Tips for laying

**Ampatex® Cento** is both vapour check and airtight seal. All seams, crevices, overlaps, joints and penetrations must be made airtight. Any surface damage must be sealed. **Ampatex® Cento** is used on the dry, internal, warm side of the thermal insulation layer, and invisibly fixed using clips or nails in any overlapping areas. The smooth, printed side must face the room and is used for gluing. When laying, take care that the strips overlap by 10 cm. The overlaps must then be sealed tight, using **Ampacoll® INT** or **Ampacoll® AT** adhesive tape. **Ampacoll® DT** can be used as an aid to installation where nails can not be used on the sub-structure. The cladding on the room side then provides the final element of fixing. **Ampacoll® BK 530** or **Ampacoll® RA** must be used for edge connections. Use **Ampacoll® Connecto** to prime porous or dusty sub-structures. Any penetration points for ventilation/electrical conduits, purlins, spars, etc. must be permanently sealed with 50 cm wide **Ampacoll® BK 535**. Again, use **Ampacoll® Connecto** to prime porous, dusty or rough sub-structures.