



-INSTALLATION- INSTRUCTIONS

▶ LP ADVENTURE BUMPER GUARD ◀

SUBARU OUTBACK WILDERNESS

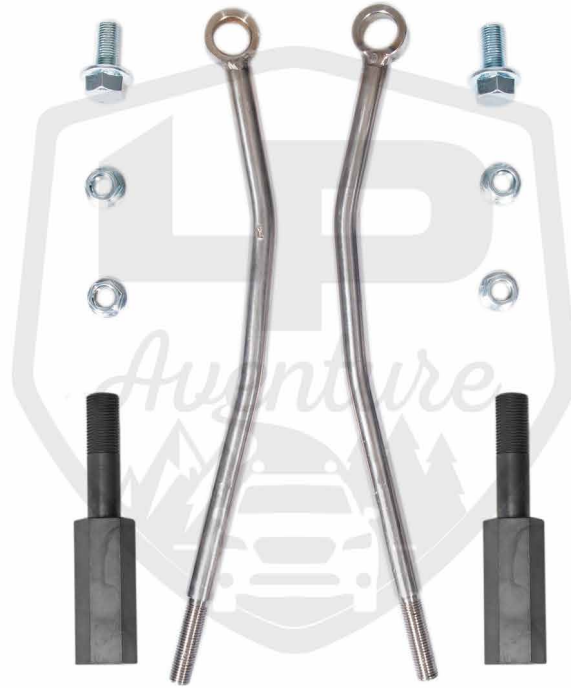
2022+

CONGRATULATIONS FOR YOUR NEW LP AVENTURE BUMPER GUARD!

If you have any questions or need assistance during the installation please contact our team. You can find the information on the last page.



IN THE BAG



BARE BUMPER GUARD SHIPS WITH FRONT PLATE UNINSTALLED





NECESSARY TOOLS

- We recommend the use of a lift
- Jack
- Ratchet
- 14mm Socket
- 19mm Socket
- 22mm Socket
- 22mm Wrench
- 25mm or 1" Socket

**** A SMALL BUMPER GUARD WAS USED FOR THIS GUIDE
BUT THE STEPS FOR A BIG BUMPER GUARD ARE THE SAME**

1

UNFOLD THE BUMPER GUARD



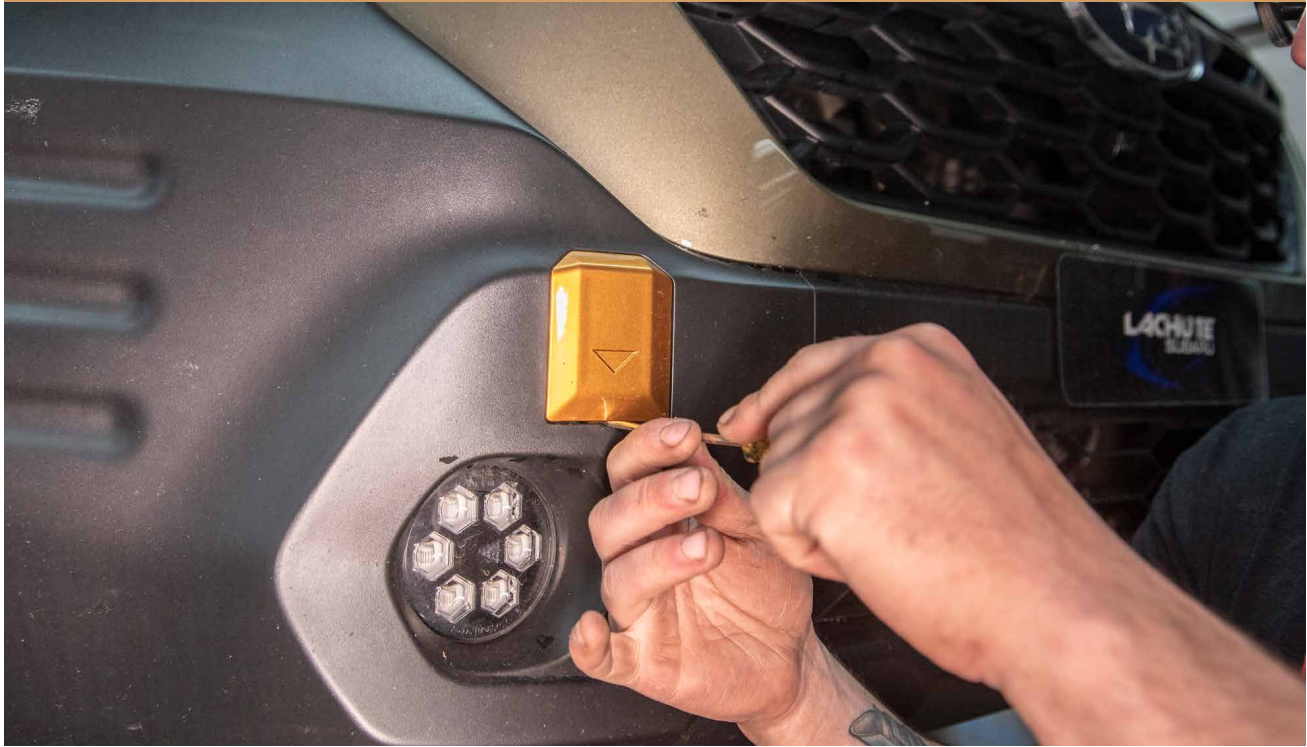
▼
SNUG UP THE BOLTS BUT DO NOT TIGHTEN YET



▼
2

REMOVE TOW HOOK COVERS





3

INSTALL NUT ONTO THE SUPPORT ROD



THREAD IN THE NUT ABOUT AN INCH.
THE ROUND END OF THE ROD CAN BE USED AS A GUIDE



4

INSERT THE SUPPORT ROD INTO THE BUMPER. THE RODS ARE STAMPED LEFT OR RIGHT



WHEN INSTALLING MAKE SURE TO HAVE THEM POINTING TO THE OUTSIDE OF THE VEHICLE.



5

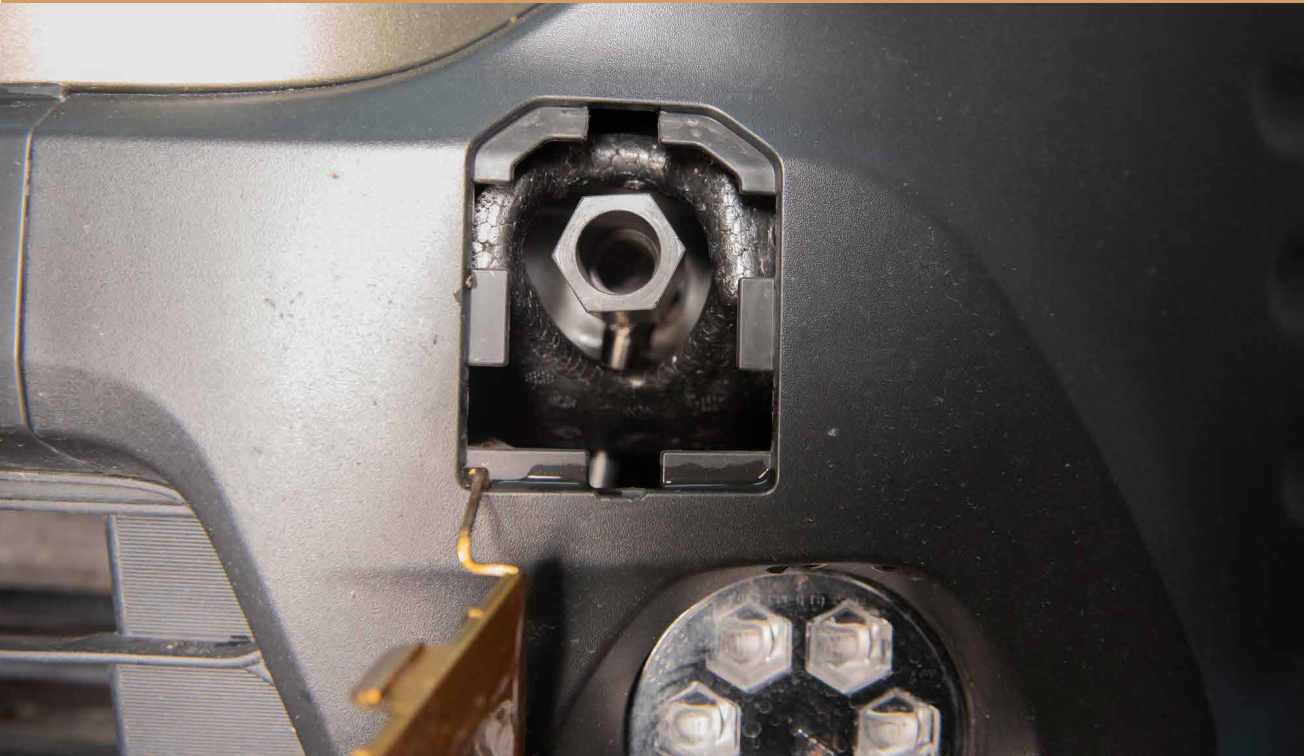
PULL THE BUMPER FOAM BACK AND SLIDE THE SUPPORT ROD BEHIND IT



6

SCREW IN THE INCLUDED TOW HOOK EXTENSION BUT DO NOT TIGHTEN IT





REPEAT STEPS ON THE OTHER SIDE

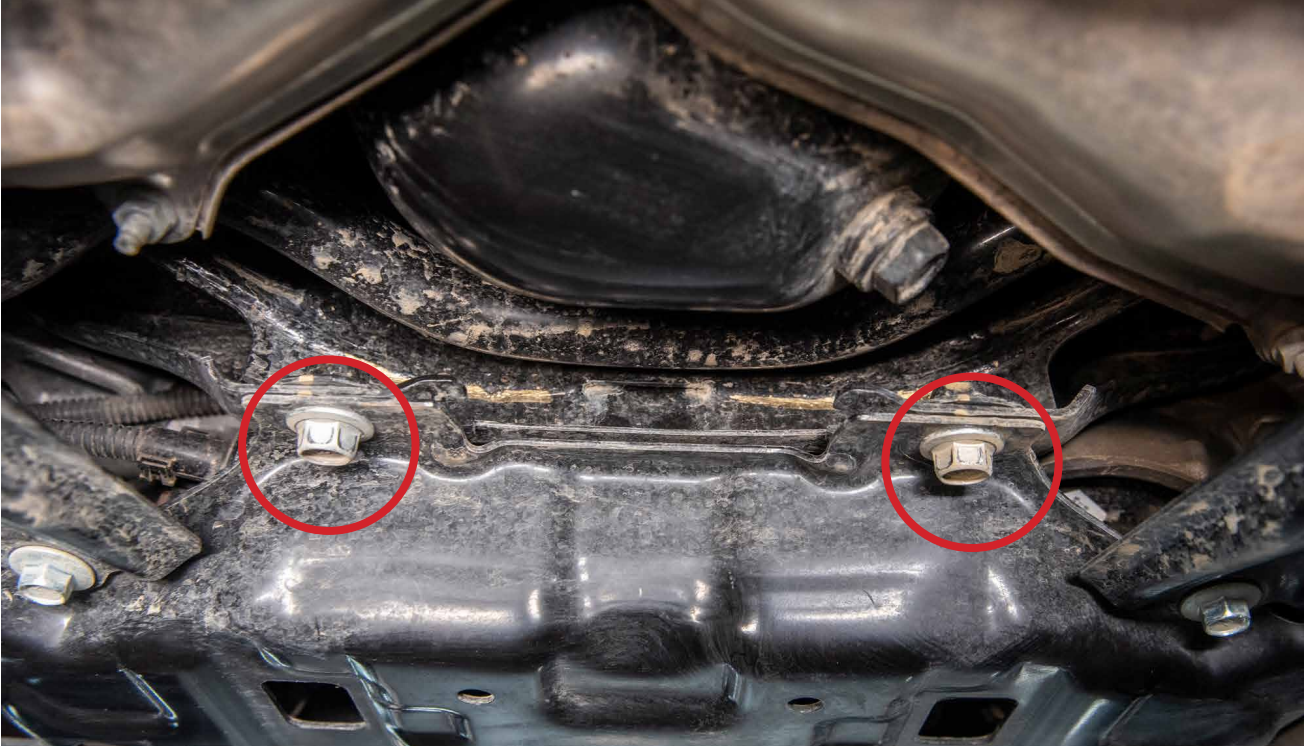


*IF YOU ARE PLANNING ON INSTALLING A LIGHT BAR, WE SUGGEST YOU INSTALL IT BEFORE MOUNTING THE BUMPER GUARD.



7

REMOVE THESE BOLTS



8

WITH THE HELP OF A FRIEND, RAISE THE BUMPER GUARD INTO POSITION



THREAD ON THE NUTS TO THE SUPPORT RODS



DO NOT TIGHTEN THEM YET



9

THREAD IN THE SUPPLIED REAR MOUNTING BOLTS BUT DO NOT TIGHTEN THESE EITHER YET

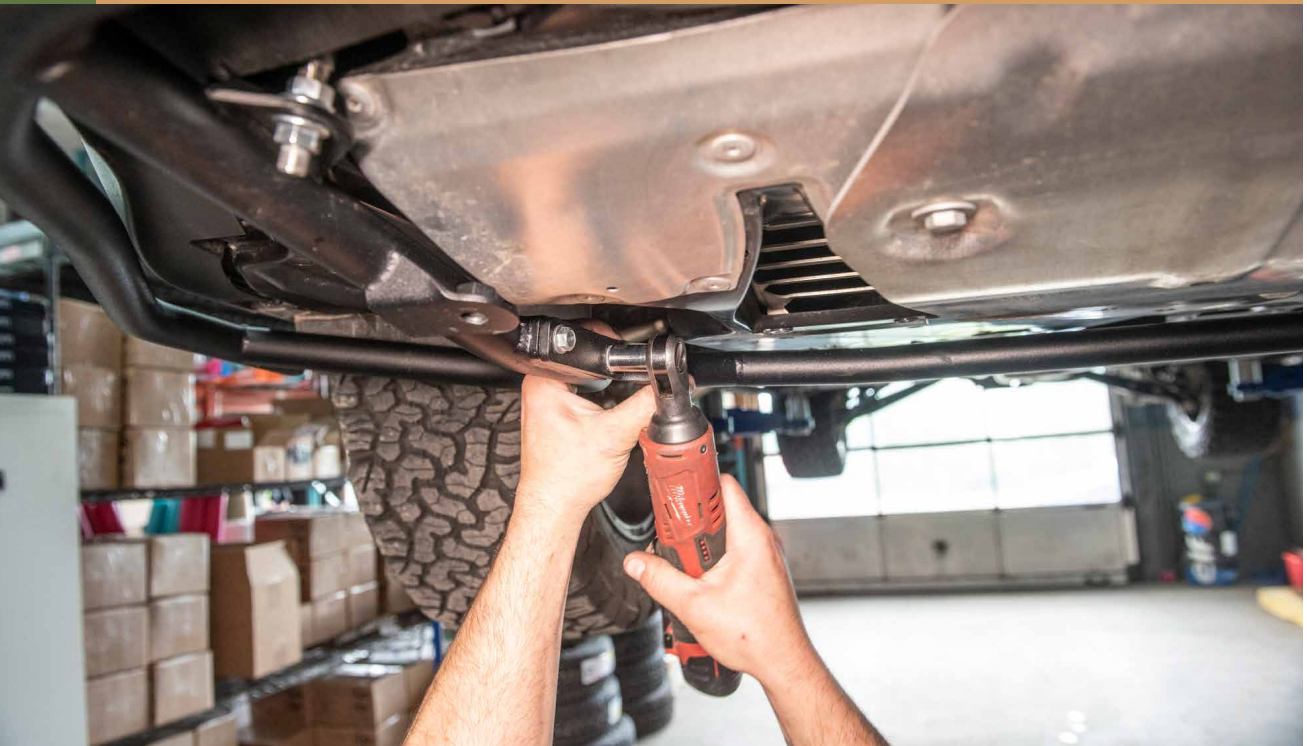


▼
CHECK TO MAKE SURE ALL THE GAPS BETWEEN THE BUMPER AND BUMPER GUARD ARE EQUAL. YOU CAN ADJUST THE HEIGHT USING THE NUTS ON THE SUPPORTS RODS.



▼
10

TIGHTEN CENTER HARDWARE



11

TIGHTEN SUPPORT ROD NUTS

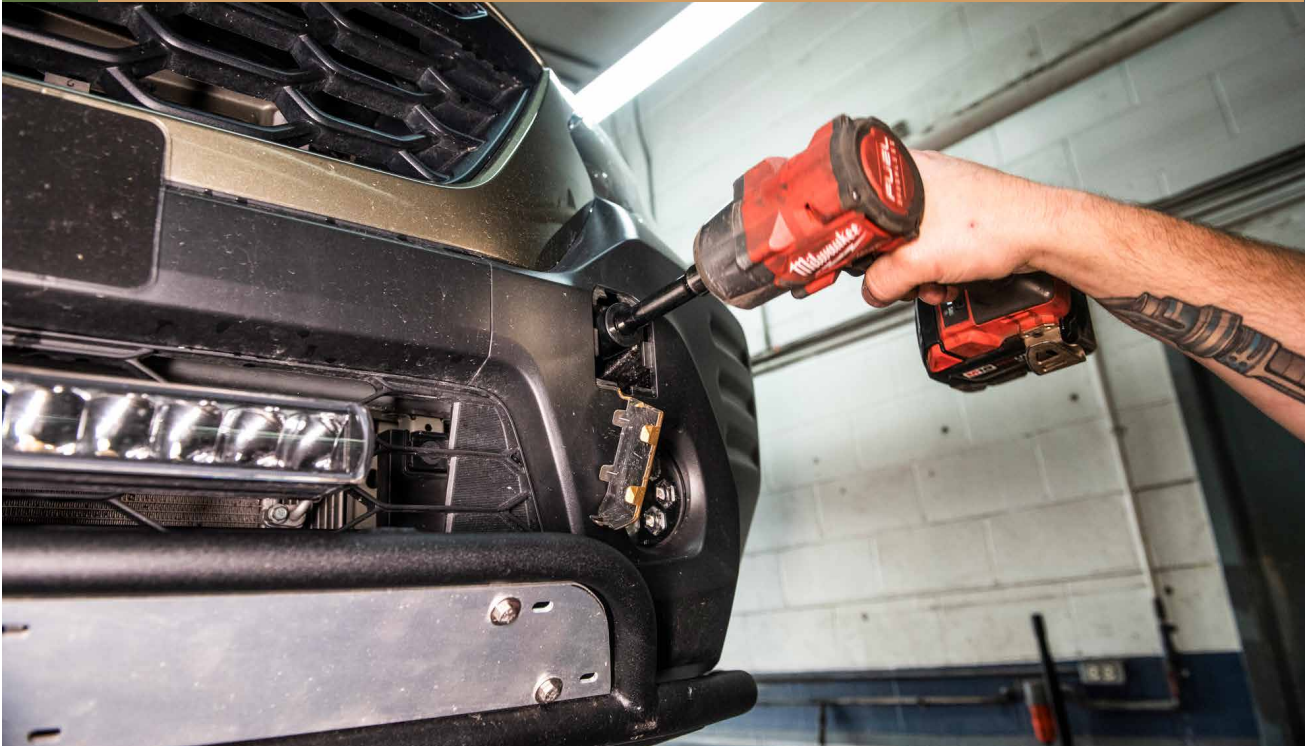


DOUBLE CHECK THAT ALL GAPS ARE STILL EQUAL



12

TIGHTEN TWO HOOK EXTENSION BOLT



13

TIGHTEN REAR OF THE BUMPER GUARD



INSTALLATION COMPLETE!





NOTES:

****Tighten all the bolts to the manufacturer's specifications with a Torque Wrench****

**Double check your work.
Reinstall the wheels and be sure to tighten
the nuts with a torque wrench.**

**Products warnings:
<https://lpaventure.com/pages/products-warnings>**

**Limited product warranty:
<https://lpaventure.com/pages/limited-product-warranty>**



**You have completed the installation.
Thank you for your interest
in our products.**

**For all requests, information or
assistance: Contact our team
by phone at
1 (866) 562-1316**

**We are available Monday to Friday
Between 8AM and 5PM (EST).**

**Or by email at :
SALES@LPAVENTURE.COM
WWW.LPAVENTURE.COM**

NOW, ENJOY THE RIDE!