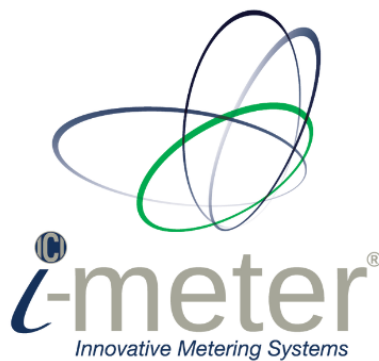


LEAK PRO

Instructions

 quotes@intellimeter.com

 www.intellimeter.com



LeakPro Instructions

Tools Needed: Small bucket/bowl, small towels or rags and adjustable wrench.

1. Turn off water supply valve to toilet
2. Flush toilet, and drain tank as much as possible
3. Using a bucket to catch dripping water, disconnect tank supply line from both wall and tank
4. *Attach supply hose to male threads of the valve*
5. Connect other end of supply hose to valve on wall and secure unit to the tank. Ensure the sensor faces towards the front of the toilet.
Tighten all fittings.
6. *Slowly open the supply valve to check for any leaks.*
7. Once you have confirmed a leak-free installation, open the supply valve all the way.
8. The valve will open upon seeing motion. Valve will constantly scan for movement: if no motion is detected, the valve will close; if motion is detected, valve will remain open and restart the timer.

