

Typical i-Meter45 c/w Potential Transformer metering Wiring Diagram

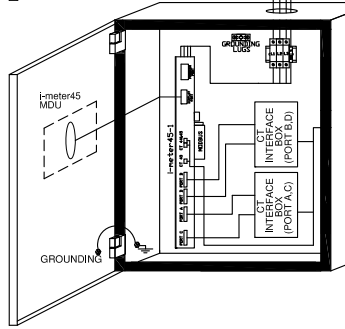
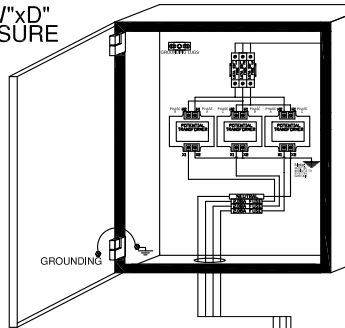
Legend:

CT LEAD (Red) - - - - -

Voltage reference (Green) - - - - -

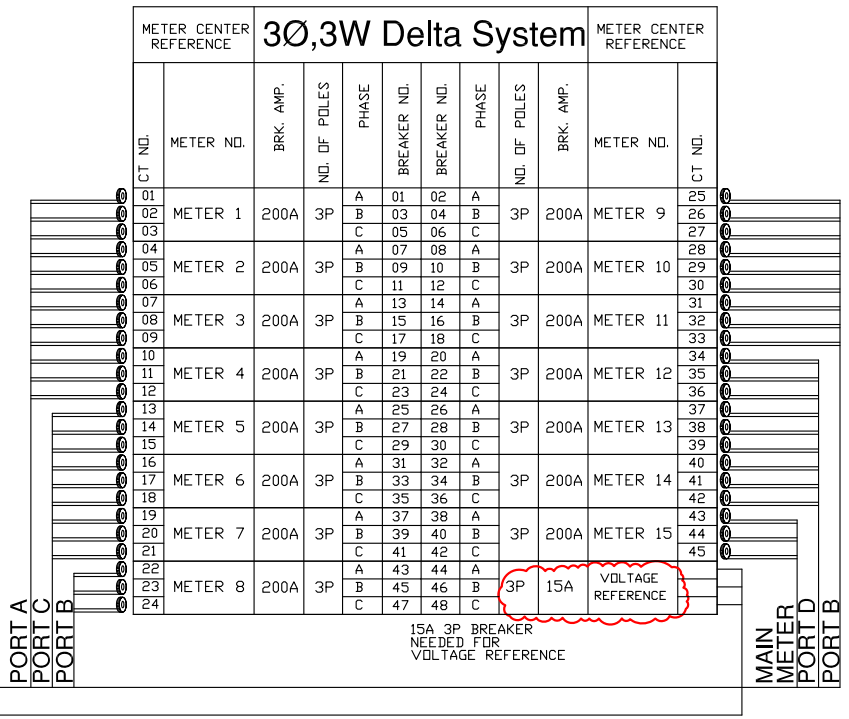
Communication (Blue) - - - - -

H"xW"xD" ENCLOSURE



20"x16"x6" ENCLOSURE

DISTRIBUTION PANEL



Meter Location / Meter Type	Panel Name	Meter #	Va	Vb	Vc	Load Name	CT Ratings	Voltage	Service Type	Utility	Units	Modbus ID / IP Address
i-meter45	TYPICAL PANEL	Meter 01	CT01	CT02	CT03	LOAD#1	200:0.1	120/208V	3EL,4W	Electricity	kWh	ID#1
		Meter 02	CT04	CT05	CT06	LOAD#2	200:0.1	120/208V	3EL,4W	Electricity	kWh	
		Meter 03	CT07	CT08	CT09	LOAD#3	200:0.1	120/208V	3EL,4W	Electricity	kWh	
		Meter 04	CT10	CT11	CT12	LOAD#4	200:0.1	120/208V	3EL,4W	Electricity	kWh	
		Meter 05	CT13	CT14	CT15	LOAD#5	200:0.1	120/208V	3EL,4W	Electricity	kWh	
		Meter 06	CT16	CT17	CT18	LOAD#6	200:0.1	120/208V	3EL,4W	Electricity	kWh	
		Meter 07	CT19	CT20	CT21	LOAD#7	200:0.1	120/208V	3EL,4W	Electricity	kWh	
		Meter 08	CT22	CT23	CT24	LOAD#8	200:0.1	120/208V	3EL,4W	Electricity	kWh	
		Meter 09	CT25	CT26	CT27	LOAD#9	200:0.1	120/208V	3EL,4W	Electricity	kWh	
		Meter 10	CT28	CT29	CT30	LOAD#10	200:0.1	120/208V	3EL,4W	Electricity	kWh	
		Meter 11	CT31	CT32	CT33	LOAD#11	200:0.1	120/208V	3EL,4W	Electricity	kWh	
		Meter 12	CT34	CT35	CT36	LOAD#12	200:0.1	120/208V	3EL,4W	Electricity	kWh	
		Meter 13	CT37	CT38	CT39	LOAD#13	200:0.1	120/208V	3EL,4W	Electricity	kWh	
		Meter 14	CT40	CT41	CT42	LOAD#14	200:0.1	120/208V	3EL,4W	Electricity	kWh	
		Meter 15	CT43	CT44	CT45	LOAD#15	200:0.1	120/208V	3EL,4W	Electricity	kWh	

Meter Type:	Potential Transformer Ratio	Potential Transformer Rating	Potential Transformer Enclosure Dimension	Max. No. of Meter with a set of PT's
Check Meter	5:1 (600V:120V) 4:1 (480V:120V)	3X25VA	12"(H)X12"(W)X6"(D)	1
Revenue Grade (Sealed Meter)	5:1 (600V:120V) 4:1 (480V:120V)	3X200VA	20"(H)X16"(W)X6"(D)	8