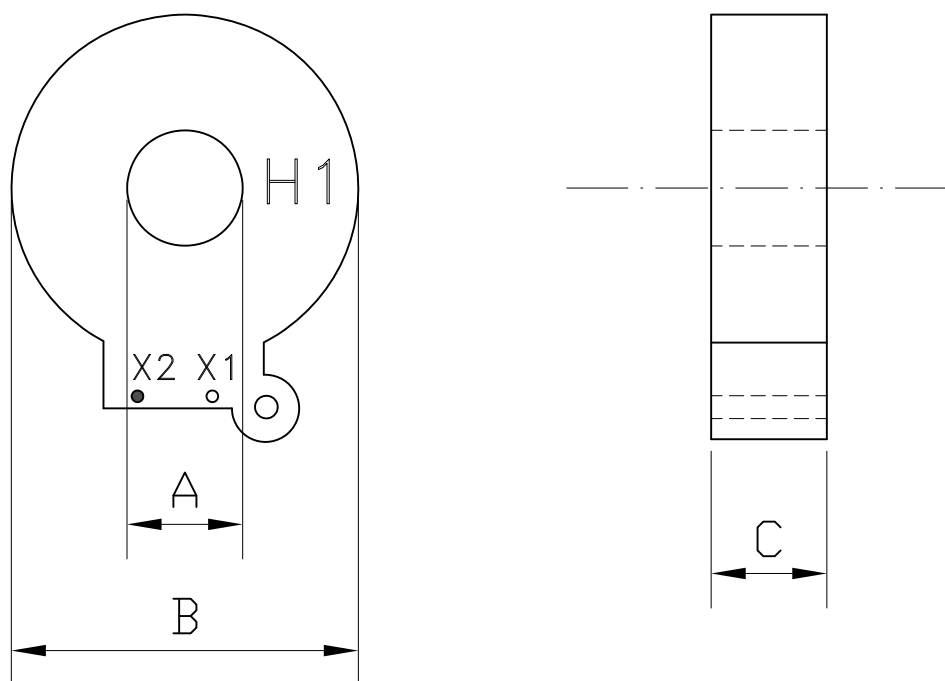


# CURRENT TRANSFORMER (CT)

## SPECIFICATION SHEET INT-BT208S-SK

### MEASUREMENT CANADA APPROVAL AE-2585



TYPICAL DIMENSION(in)

*CLASS		A	B	C
PRIMARY LOAD	SECONDARY CT OUTPUT			
	Max.			
2-200A	0.08A	0.75	1.9	0.68

Rated current: 200A  
 Accuracy class: 0.3 B0.005  
 Rating factor: 1.33 @ 30°C amb  
 Frequency: 50/60 Hz  
 Voltage class: 600V 10KV BIL  
 Secondary leads: (6ft) X1 (white) and X2 (black)  
 Twisted #18 AWG 600V rated 105°C temp rating TEW  
 Housing: UL94-V1 recognized material  
 Polarization: primary dot on line side  
 Complete with protection: bilateral switch (secondary 10V max)  
 Arrow indicates line-to-load direction