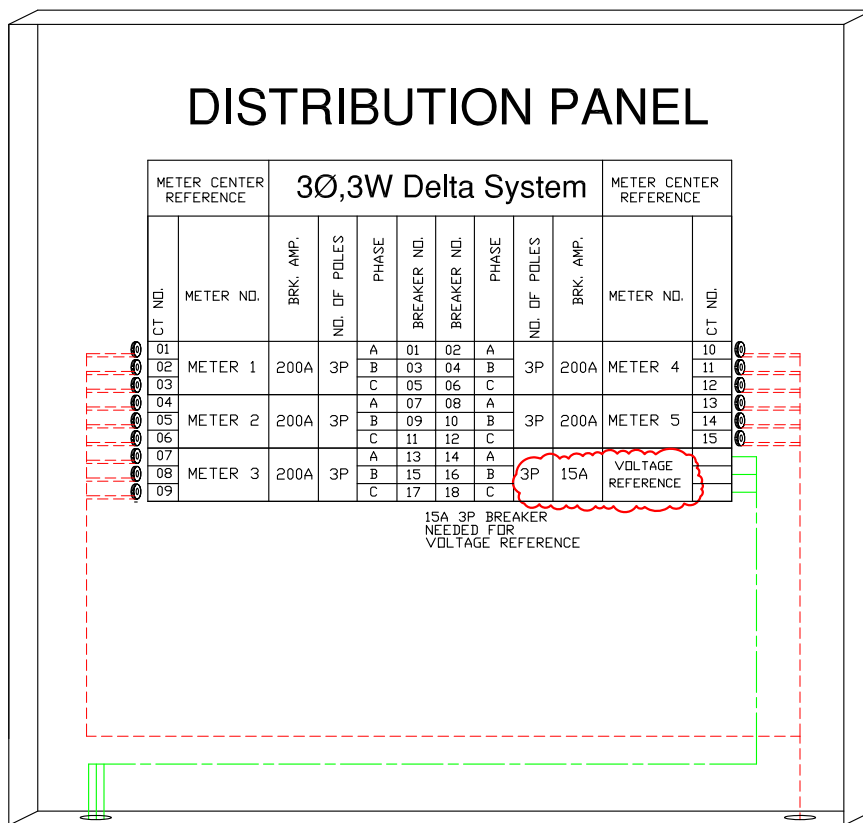


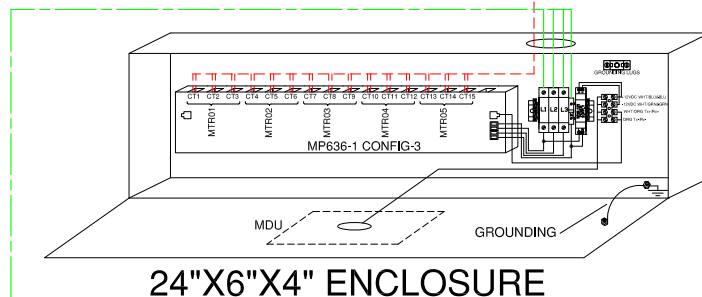
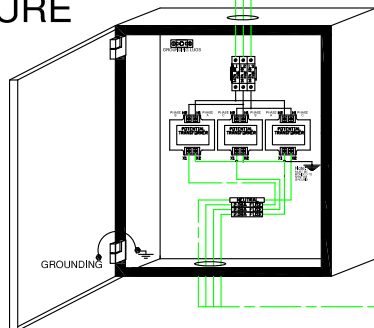
# Typical MP-636EXTC c/w Potential Transformer metering Wiring Diagram



## Legend:

- CT LEAD (Red) -----
- Voltage reference (Green) -----
- Communication (Blue) -----

H"xW"xD" ENCLOSURE



Meter Location / Meter Type		Panel Name	Meter #	Va	Vb	Vc	Load Name	CT Ratings	Service Voltage	Service Type	Utility Units	Modbus ID / IP Address
MP-636EXTC	Typical Panel		Meter 01	CT01	CT02	CT03	LOAD#1	200:0.1	120/208V	3EL,4W	Electricity kWh	ID#1
			Meter 02	CT04	CT05	CT06	LOAD#2	200:0.1	120/208V	3EL,4W	Electricity kWh	
			Meter 03	CT07	CT08	CT09	LOAD#3	200:0.1	120/208V	3EL,4W	Electricity kWh	
			Meter 04	CT10	CT11	CT12	LOAD#4	200:0.1	120/208V	3EL,4W	Electricity kWh	
			Meter 05	CT13	CT14	CT15	LOAD#5	200:0.1	120/208V	3EL,4W	Electricity kWh	

Meter Type:	Potential Transformer Ratio	Potential Transformer Rating	Potential Transformer Enclosure Dimension	Max. No. of Meter with a set of PT's
Check Meter	5:1 (600V:120V) 4:1 (480V:120V)	3X25VA	12"(H)X12"(W)X6"(D)	1
Revenue Grade (Sealed Meter)	5:1 (600V:120V) 4:1 (480V:120V)	3X200VA	20"(H)X16"(W)X6"(D)	8