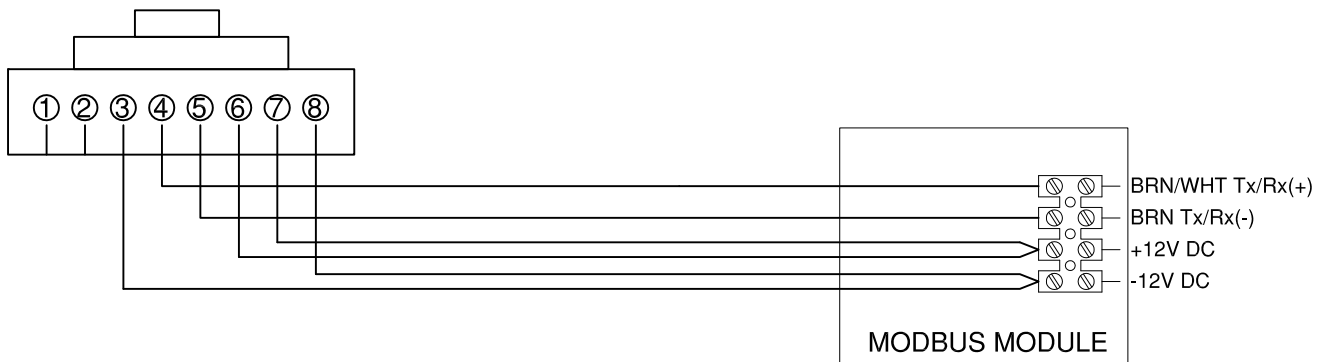


RJ45 TO MODBUS MODULE TERMINAL BLOCK CONNECTION DIAGRAM

BRN/WHT	4	_____	1 (Tx/Rx(+))
BRN	5	_____	6 (Tx/Rx(-))
BLU/WHT	6	_____	5 (+12V DC)
BLU	7	_____	2 (+12V DC)
GRN/WHT	8	_____	3 (-12V DC)
GRN	3	_____	4 (-12V DC)



RJ45
FOR MODBUS MODULE