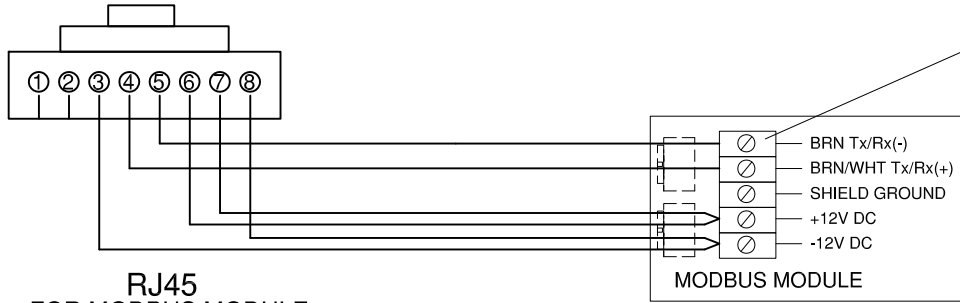
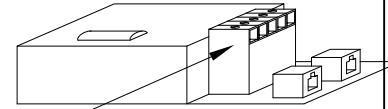


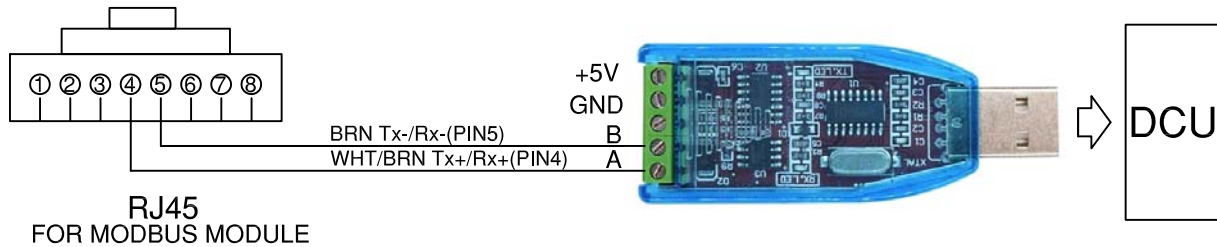
RJ45 Female to USB connector in DCU Wiring Diagram

BRN/WHT	4	_____	1 (Tx/Rx(+))
BRN	5	_____	6 (Tx/Rx(-))
BLU/WHT	6	_____	5 (+12V DC)
BLU	7	_____	2 (+12V DC)
GRN/WHT	8	_____	3 (-12V DC)
GRN	3	_____	4 (-12V DC)



RJ45 FOR MODBUS MODULE

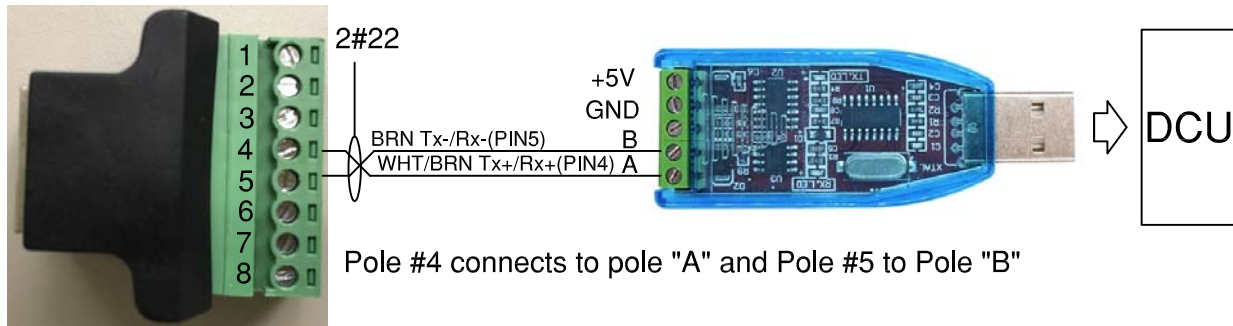
RS485/USB adapter to Modbus Module Cat 5e CONNECTION DIAGRAM



RJ45 FOR MODBUS MODULE

RJ45-8 pin terminal to USB/RS485 adapter.

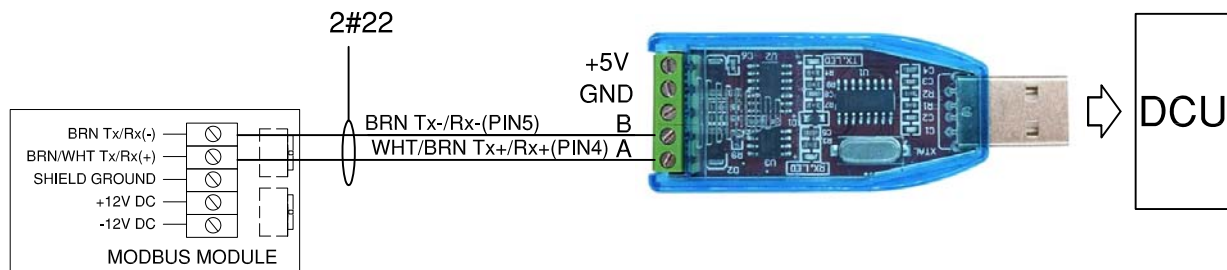
WHT/BRN Tx+/Rx+(PIN4)-----USB adaptor Connector "A"
 BRN Tx-/Rx-(PIN5)-----USB adaptor Connector "B"



Pole #4 connects to pole "A" and Pole #5 to Pole "B"

Wiring RS485/USB adapter to Modbus Module Cat 5e

WHT/BRN Tx+/Rx+(PIN4)-----USB adaptor Connector "A"
 BRN Tx-/Rx-(PIN5)-----USB adaptor Connector "B"



Project Name:	Distributor:	Engineer:	P.O.#	Date:	Rev.	Project#:	Drawing#:	Drawn:	Checked:	Drawing:
								H.P.	H.P.	