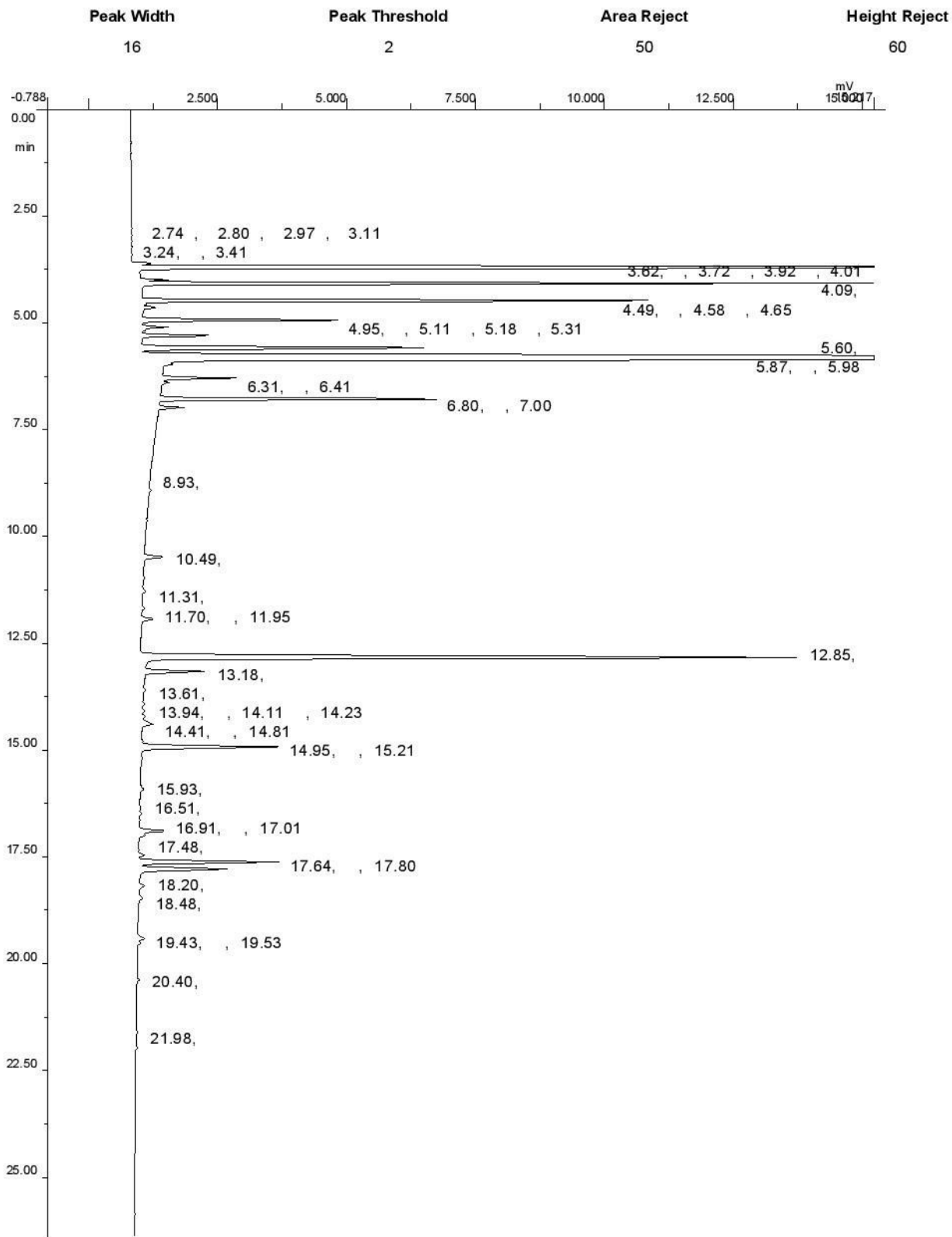


Sample Name : ORGANIC ROSEMARY OIL  
Detector : FID  
System : GC

Analysis Type : Percent Method  
Time : 11:33:02 AM  
Chan No : Chan 2



**Area Percent**

Sr. No.	Component Name	Ret. Time.	Area	Area %	Peak Type
1		3.24	65.943	0.0081	PB
2		3.41	85.143	0.0105	BB
3		3.62	1155.276	0.1425	BV
4	ALPHA PINENE	3.72	152849.045	17.8600	VV
5		3.92	543.563	0.0671	VV
6		4.01	1452.622	0.1792	VV
7	BITA PINENE	4.09	36228.111	4.4702	VB
8		4.49	31222.407	3.8525	BV
9		4.58	186.963	0.0231	VV
10		4.65	913.824	0.1128	VB
11		4.95	10904.857	1.3455	BP
12		5.11	1273.734	0.1572	PV
13		5.18	239.925	0.0296	VP
14	1, 8- CINEOLE	5.31	4222.400	0.5210	PP
15		5.60	20150.343	2.4863	PP
16		5.87	427889.632	51.8525	PV
17		5.98	1454.880	0.1795	VB
18		6.31	3756.210	0.4635	BV
19		6.41	421.956	0.0521	VB
20		6.80	17015.517	2.0995	BV
21		7.00	1409.857	0.1740	VB
22		8.93	161.257	0.0199	BB
23		10.49	1527.086	0.1884	BB
24		11.31	196.000	0.0242	BB
25		11.70	236.423	0.0292	BV
26		11.95	957.129	0.1181	VB
27		12.85	54583.229	6.7350	BV
28		13.18	4379.451	0.5404	VB
29		13.61	176.629	0.0218	BB
30		13.94	85.886	0.0106	BB
31		14.11	185.310	0.0229	BV
32		14.23	274.203	0.0338	VV
33		14.41	1171.188	0.1445	VB
34		14.81	149.432	0.0184	BV
35		14.95	10217.592	1.2607	VP
36		15.21	79.200	0.0098	PB
37		15.93	234.457	0.0289	BB
38		16.51	130.971	0.0162	BB
39		16.91	2102.800	0.2595	BV
40		17.01	570.629	0.0704	VB
41		17.48	441.592	0.0545	BV
42		17.64	10034.962	1.2382	VV
43		17.80	7121.578	0.8787	VB
44		18.20	449.910	0.0555	BV
45		18.48	384.026	0.0474	VB
46		19.43	578.862	0.0714	BV
47		19.53	257.989	0.0318	VB
48		20.40	242.114	0.0299	BB
49		21.98	69.486	0.0086	BB
			<b>810441.599</b>	<b>100.0000</b>	

**SUMMARY**

**Total Peaks :** 53  
**Multiplication Factor :** 1.0000  
**Sample Amount :** 100.0000

**Dilution Factor :** 1.0000  
**Syssuit Standards :** IP  
**ISTD Amount :** 0.0