

ELEV 374

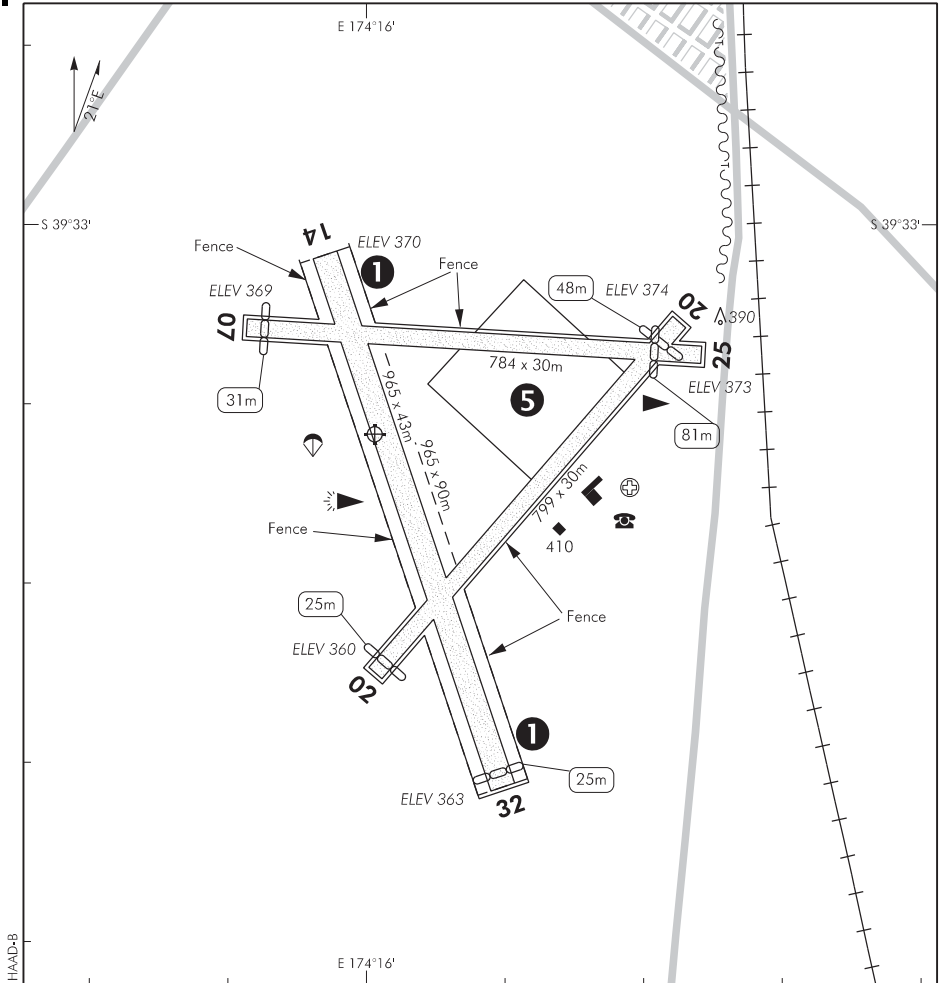
NZHA

NON-CERTIFICATED

**HAWERA****AERODROME**

UNATTENDED: 124.65

AWIB: 130.65



- ① Night operations RWY 14/32. Displaced thresholds apply:
- |        |      |
|--------|------|
| RWY 14 | 40 m |
| RWY 32 | 72 m |
- Surface may be soft after heavy rain, especially during winter months, particularly for aircraft over 1500 kg. Please check with operator.
  - Post and wire fence (depicted) 6.5 m from runway edge.
  - Tailskid aircraft — avoid aeromodellers mown square on the western side of RWY 02/20 opposite hangar area.
  - ⑤ Model aircraft flying may take place during daylight hours.
  - AWIB (wind and QNH) activated by 4 transmissions in quick succession on 130.65.
  - Mowing of runways and operational areas may take place at any time.

S 39 33 12 E 174 16 01\*

**Effective: 20 JUL 17**

© Civil Aviation Authority

**HAWERA**  
**AERODROME**

NZHA

**RWY**

RWY	SFC	Strength	Gp	Slope	ASDA	Take-off distance			LDG DIST
						1:20	1:30	1:40	
02 02	Gr(s)	ESWL 1640	5 6	0.52U		751			774
20 20	Gr(s)	ESWL 1640	6 5	0.52D		774			751
07 25	Gr(s)	ESWL 1340	5	0.15U 0.15D		703 753			753 703
14 14	Gr(s)	ESWL 1640	7 8	0.22D	965	940			965
32 32	Gr(s)	ESWL 1640	8 7	0.22U	965	965			940
*14 *32	Gr(s)	ESWL 1640	7 7	0.22D 0.22U	965			893 925	925 893

\* Night operations RWY 14/32. Displaced thresholds apply — refer Note 1 on aerodrome chart.

**MINIMA**

IFR Take-off		
RWY	Day	Night
14/32	500-2000	600-5
07/25	500-2000	NA
02/20	500-2000	NA

**LIGHTING**

PAL 124.0: Non-standard operation — transmit 3 pulses in quick succession.

Runway: 14/32 LIL

RWY edge light spacing — 100 m

Displaced threshold marked by white wing-bar lights.

Taxi lighting on eastern side only of RWY 02/20 to the club house.

No standby power.

**FACILITIES**

Fuel: Avgas 100 available by prior arrangement.

Tie down area available and club house facilities when open or by prior arrangement.

**SUPPLEMENTARY**

Operator: Hawera Aero Club, PO Box 316, Hawera.  
Tel/Fax (06) 278 6301

Available for general use for private operations.

Available for air transport operations and aerial work subject to the prior agreement of the operator.

Landing and parking fees payable.

Visitors and itinerant aircraft welcome.