



SOFTAP® PERMANENT COSMETIC COLORS

The Most Natural Look in Permanent Cosmetics

Welcome to the revolutionary SoftTap pigment line

Natural looking colors
No mess
Creamy consistency
Fast skin penetration
Can be used with any machine or hand tool
Hypo-allergenic
Non-Toxic

No mixing required
Less touch-ups
Reduced appointment time
Easy to choose the right color
Less skin trauma due to rapid color uptake
Safe
Made in the USA

GORGEOUS BROW COLORS

Brow colors are divided into 3 palettes: warm (copper tubes), neutral (gold tubes), and cool (silver tubes).

If a color with **more red** is desired, then choose a color from the **warm palette**.

If a color with **less red** is desired, then choose a color from the **neutral palette**.

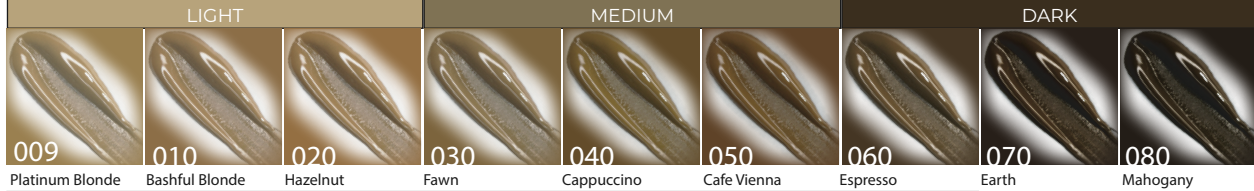
If a color with **little or no red** is desired, then choose a color from the **cool palette**.

For Microblading, choose colors from the neutral or warm palette because colors may turn cooler upon healing.

The palettes are further divided into light, medium, and dark.



WARM
BROWNS



NEUTRAL
BROWNS



COOL
BROWNS

STUNNING EYELINER COLORS

Eyeliner colors range from **natural blacks** and **browns** to eye-popping **teal** and **plum**. For the blackest black, layer Black Orchid over Cafe Ole; for a defined burst of color, put a thin line of any special FX pigment above one of the classic brown or black pigments.



IMPOSTER
COLLECTION



FABULOUS LIP COLORS

All lip pigments - except Diva & Jamaican Rum - have been **pre-neutralized with orange** to balance with the natural blue tones in the lips. The **Imposter Collection** is perfect for **matching** an existing lip tone & re-defining or shaping the lip.



CAMOUFLAGE COLORS



Blending scars and neutralizing hypopigmentation can be achieved with the art of color blending to match a client's skin tone. We recommend using **2-3 colors for the most realistic look**; use Cool-it to make any pigment more ash, or Peaches N Cream to add warmth.



3D AREOLA COLORS



Breast pigments have been re-defined with the SoftTap areola collection; these colors have been used in hospitals worldwide to create realistic 3D areola. Choose a **base color, highlight, and shadow** for the highest level of realism for your clients.



Use RecoverAll to lock in pigment after the procedure is complete, and to soothe and heal the skin quickly for maximum color retention **for all procedures**



CORRECTION AIDS

These pigments help PMU artists who are ready to take on the challenge of altering color. Use **Orange Aid on blue/grey tones**, **Lime Aid on orange/red tones**, and **Lemon Aid on pink/purple tones**. Use a drop of **Cool-it** into Lime Aid to boost the cooling effect, or to cool any pigment.



Use Lightning to exfoliate **small areas** of unwanted pigment

SCALP COLORS

Scalp pigmentation is great for defining a hairline, or adding depth to areas on the scalp where hair is thinning (for both men and women). Apply as hair **follicle dots**, or **short hairs** where needed for a naturally soft look.



Favorite Mixes & Tips

FOR LIPS

- To make a wine or burgundy color: mix Valentine with a dot of Blue Lagoon
- To correct *strong* blue undertones in the lip: add Mango Obsession to any lip color
- To lighten any lip color: add Seashell
- To brown any lip tone: add Caramel or Bordeaux (don't add more than 25%)
- For a deep nude: equal parts Secret Passion, Cupid's Kiss, and Victorian Rose
- For a brighter orange pink: 50 blend of Blushed Petals and Valentine
- For a beautiful baby pink: 50/50 blend of Cotton Candy and Tickle Me Pink
- For a deeper mauve nude: 50/50 blend of Sweet 16 and Victorian Rose
- For a lovely mix on lips with a lot of natural color: 50/50 blend of Innocence and Jamaican Rum

FOR BROWS

- To lighten any blondes: use Lemon Aid
- To correct old blue eyeliner: use Royal Fudge
- To lighten any color by 3 shades: use Salmon. Eg: to change black brows to blonde, use Salmon on black brows, let heal, then use a blonde over it
- To correct old blue or gray brows: use Copper, Cocoa, or Royal Fudge
- To turn gray brows taupe: use Amber
- To lighten any brows even already healed in skin: use Tahitian Tan
- To lighten and cool down blondes: add Golden Sunrise
- To make a gray: mix Earth with a little Pearl
- To make a gold/gray: mix Platinum + a little Earth. Lighten with Golden Sunrise
- To cool down neutral and warm palette browns: mix 50/50 with any cool palette color (silver tube).

FOR EYELINER

- To make a med/dark blue: mix 50/50 Tempting Teal and Blue Lagoon
- To make a medium green/gray: mix 50/50 Tempting Teal and Jade Granite
- To make a medium green/brown: 50/50 Tempting Teal and Irish Moss
- To make a baby blue: mix Blue Lagoon with a little Pearl
- To make a medium ash brown: mix 50/50 Amber and Earth plus a little Irish Moss
- To make a smoky green: mix 50/50 Black Orchid and Jade Granite

SMEAR & MATCH

Choosing the right color is easy!

- Put a *small dot* of pigment on the skin
- Use a *dryswab* and smear the dot of color as if you were to try wiping it off
- Observe the sheer pigment layered with the undertones of the client's skin

Tip: To test more than one color, apply on one side of the face for brows, eyes, or lips and a different color on the other side of the face. You will be able to instantly see which one is best.