

## GUIDE FOR THE SAFE USE OF TOPICAL ANESTHETICS FOR EYELINER PMU

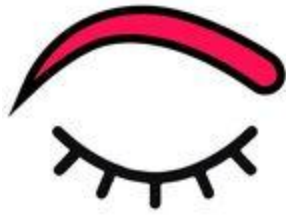
### Steps to follow for upper eyelid:

- Instruct your client to keep their eyes closed. Explain that if they blink, the anesthetic will go inside the eye, and this will burn.
- Using a micro-brush, apply a minimal amount of Block Aid at the lash line and on the upper eyelid's free edge, being careful to avoid contact with the eye's conjunctiva.
- Wait for 5 to 10 minutes.
- Remove the Block Aid with damp cotton.
- Clean the inner corner of the eye using a dry cotton swab.
- Using another cotton swab, clean the edge of the upper and lower eyelids.
- Ask your client to open their eyes and ensure there is no anesthetic inside the eyes.
- Apply artificial tears.
- Perform a few light taps with the needle without pigment on the treatment area. For example, if you are doing an eyelash enhancement, tap between the eyelashes. If you are doing an eyeliner, tap the skin of the eyelid directly as close as possible to the eyelashes.
- Apply Minnerva II only to the treatment area, avoiding eye contact.
- Remove Minnerva II excess with a cotton swab.
- Apply artificial tears again.
- Start implanting the pigment using a gentle technique.
- Apply a minimal amount of Block Aid after each pigment pass. If you need to minimize bleeding, use Minnerva II additionally.
- Always clean the inner corner of the eye to prevent any excess anesthetic from entering the eye.



### **Steps to follow for lower eyelid:**

- Instruct your client to open their eyes and not blink. You can help them keep their eyes open by holding their eyelids with your fingers.
- Using a micro-brush, apply a minimal amount of Block Aid at the lash line and on the free edge of the eyelid, avoiding contact with the eye's conjunctiva.
- Have client close their eyes and tell them to keep them closed and not to blink. Explain that blinking can risk anesthetic entering the eye and causing a burning sensation.
- Allow 5 to 10 minutes to pass.
- Remove the Block Aid with damp cotton.
- Clean the inner corner of the eye using a dry cotton swab.
- Using another cotton swab, clean the edge of the upper and lower eyelids.
- Ask your client to open their eyes to ensure no anesthetic has entered the eyes.
- Apply artificial tears.
- Perform a few light taps with the needle without pigment on the treatment area.
- Apply Minnerva II only to the area treatment area, avoiding eye contact.
- Remove excess Minnerva II with a cotton swab.
- Apply artificial tears again.
- Start implanting the pigment using a gentle technique.
- Apply a minimal amount of Block Aid after each pigment pass. If you need to minimize bleeding, use Minnerva additionally.
- Always clean the inner corner of the eye to prevent excess anesthetic from entering the eye.

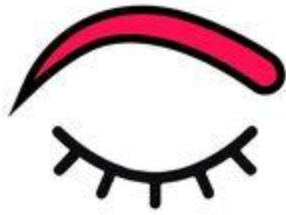


## **GUIDE FOR THE SAFE USE OF TOPICAL ANESTHETICS FOR EYEBROWS PMU**

### **Steps to follow for eyebrows:**

I recommend that you numb the eyebrows BEFORE designing them to save time and avoid erasing the sketch with the micro-brush.

- Apply a moderate amount of Block Aid to the area of the eyebrows and gently rub the skin using a micro-brush.
- Allow 5 to 10 minutes to pass.
- Remove the Block Aid with damp cotton.
- Perform a few light taps with the needle without pigment on the brows.
- Apply Minnerva II only to the treatment area.
- Remove excess Minnerva II with damp cotton.
- Design the eyebrows.
- Start implanting the pigment using a gentle technique.
- Apply a minimum amount of Block Aid after each pigment pass, adding Minnerva II if you need to minimize bleeding.



## GUIDE FOR THE SAFE USE OF TOPICAL ANESTHETICS FOR LIPS PMU

### Steps to follow for Lips:

- Apply a moderate amount of Block Aid to the lip area and gently rub it into the skin using a micro-brush.
- Allow 5 to 10 minutes to pass.
- Remove the Block Aid with damp cotton.
- Mark the treatment area with your preferred product.
- Perform a few light taps with the needle dipped in pigment on the area where you will work to demarcate the area.
- Apply Minnerva II only to the treatment area.
- Remove excess Minnerva II with damp cotton.
- Start implanting the pigment using a gentle technique.
- After each pigment pass, apply a moderate amount of Block Aid and Minnerva II to prevent or minimize bleeding.
- Leave the Block Aid applied on the lower lip while working on the upper lip and vice versa.