



KONG™ Cord and Wire Auto Glass Cutting System

AGWCS1

\$649



Imagine cutting across the dash and headliner of a windshield simultaneously, without any need to reposition the tool! Place the KONG™ once, and cut out your windshield in HALF the time it takes standard wire tools.

MADE IN USA



Hardened Stainless Steel Components

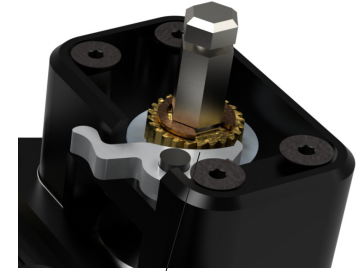
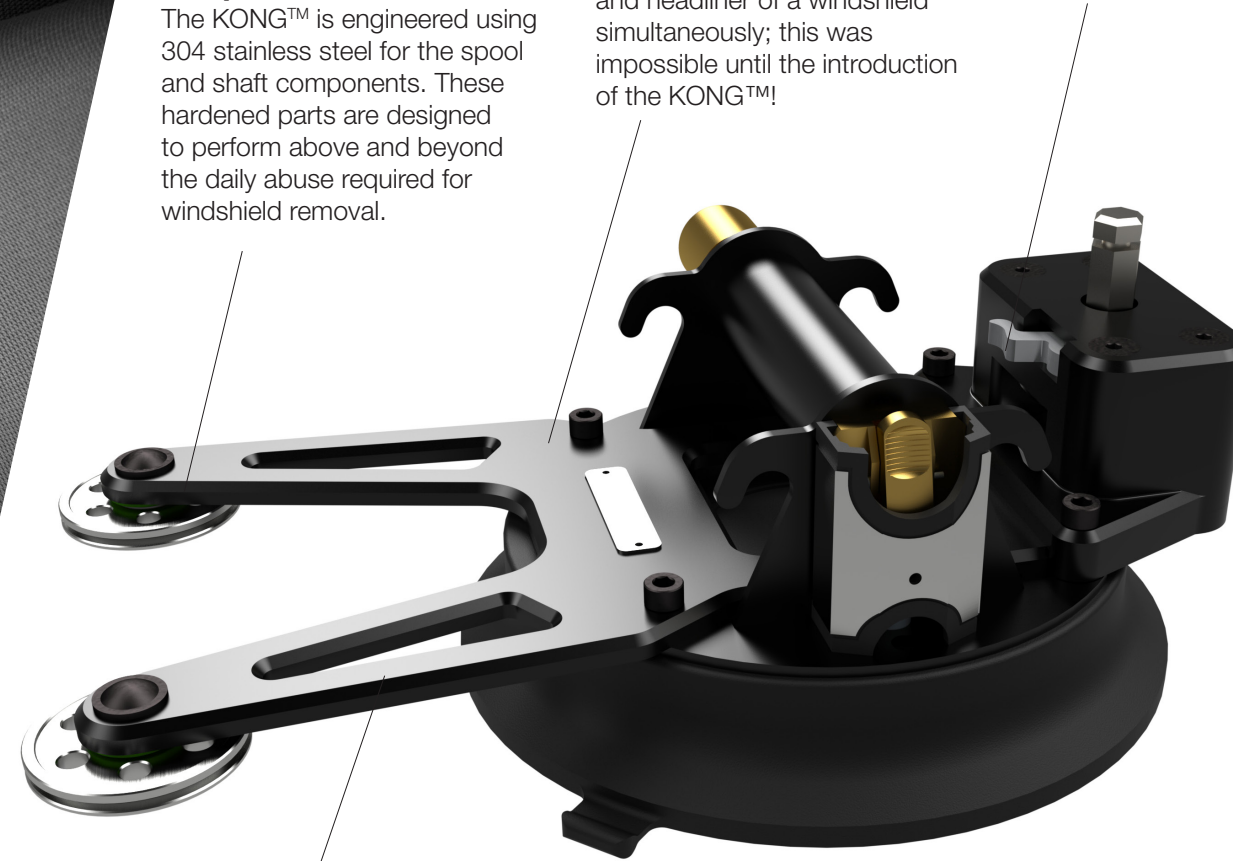
The KONG™ is engineered using 304 stainless steel for the spool and shaft components. These hardened parts are designed to perform above and beyond the daily abuse required for windshield removal.

Precision Machined Dual Cutting

The KONG™ tool body is precision machined out of 6061 aluminum with two offset ergonomic pulleys for dual cutting. Imagine cutting the urethane across the dash and headliner of a windshield simultaneously; this was impossible until the introduction of the KONG™!

One Position, One Cut

The KONG™ is easy to use, there is no need for additional pulleys or equipment to be attached to the interior of the windshield. With its dual cutting technology, a specialist can cut the windshield out in half the time of standard wire cutting methods from one position.



Locking Back Drive

If we haven't exhausted our resources enough, the KONG™ also features a locking back drive that prevents the cord from releasing or slipping under tension during use.

KONG™ Winding Assembly Only
AGWC-K
\$550



System Contents

KONG™ Winding Assembly, GT Tools 3/8" Swivel Ratchet, GT Tools 1/2" Socket T-Handle, Small Guide Shield, Large Guide Shield, Gorilla Cord 250ft, ZipLine 300ft, Guide Leash, Case, Product Manual

Shop www.gtglass.com

Learn sales@gtglass.com

Contact 970-247-9374