

GT Tools® Beast™ 18V Brushless Lithium Ion with SDS™ Technology

AGRKM18V
\$908

New/Updated 2022



BEAST

The Beast™ 18V Lithium-Ion Brushless and cordless auto glass reciprocating cut out system with GT Tools® Smooth Drive System™ (SDS) is the next generation of legendary performance and durability. The Beast™ leverages a POWERSTATE™ Brushless Motor to provide you with 3,000 SPM and a purpose-modified stroke length for faster urethane removal and smoother cutting.



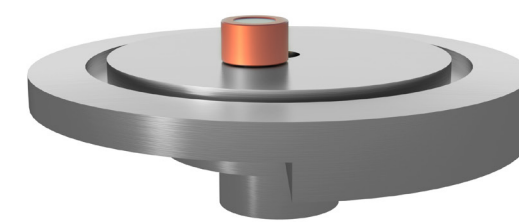
Built to Last

The GT Tools® Beast™ is designed to perform in the most demanding applications and is our most durable cordless reciprocating saw yet. A redesigned trigger assembly, anti-corrosion blade clamp, and metal reinforced battery rails provide longer component life and stand up to the toughest conditions.

AGR



The Smooth Drive System SDS™ makes removing a windshield faster, easier and more effective. The Beast's™ engineered stroke dampens the impact while allowing the blade to maintain contact with the urethane bead; thus making control on the "A" pillars, roof and bottom beads faster and less physical for the specialist.



The most advanced Lithium Ion Battery available

Powered by an 18V XC High Capacity REDLITHIUM battery, the Beast™ gets up to 2.5X more run-time, 20% more power and 50% more recharges than tools with conventional lithium-ion batteries. Pair this tool with the 18V Milwaukee Caulking gun (pg. 124, AGCG-18V-LI) for seamless transition between cut-out and install.



BEAST

SDS™ Blades

A High Carbon Spring Steel shank and precision-milled edges cut urethane like butter without deforming. The Beast™ ships with (1) GT Tools® 3"x12" Diablo™ SDS™ Sheath blade.



3" X 12" Diablo™ SDS™ Blade AGKB3X12

\$51
Ideal for sloped windshields with medium length dashes that require more reach to access the urethane. Our most versatile blade.



3" X 14" Diablo™ SDS™ Blade AGKB3X14

\$55
Ideal for cab forward designed vehicles with wide dashes that require an extended reach to access the urethane. Ideal for new model vehicles.