



GT Tools® Diablo™ 18V Lithium Ion with SDS™ Technology

AGRK-18V-HZ-LI-SYS

\$690

The Diablo™ 18V Lithium-Ion cordless auto glass reciprocating cut out system with GT Tools® Smooth Drive System™ (SDS) allows for less vibrations during cutting, which results in more control.

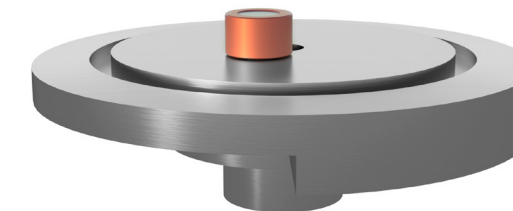
Micro Size, Macro Power

Lightweight and ergonomic with the smallest footprint of all GT Reciprocating tools, the Diablo™ is designed for maximum power, operator comfort and convenience.



The most advanced Lithium Ion Battery available

Powered by an 18V XC High Capacity LITHIUM-ION battery, the Diablo™ gets up to 40% more run-time, 20% more power and 50% more recharges than tools with conventional lithium-ion batteries. Pair this tool with the 18V Milwaukee Caulking gun for seamless transition between cut-out and install.



The new Smooth Drive System SDS™ makes removing a windshield faster, easier and more effective. The Diablo's™ engineered stroke dampens the impact while allowing the blade to maintain contact with the urethane bead; thus making control on the "A" pillars, roof and bottom beads faster and less physical for the specialist.



SDS™ Blades

A High Carbon Spring Steel shank and precision-milled edges cut urethane like butter without deforming. The Diablo™ ships with (1) GT Tools® 3"x12" SDS™ Sheath blade.



3" X 12" SDS Blade

AGKB3X12

\$38

Ideal for sloped windshields with medium length dashes that require more reach to access the urethane. Our most versatile blade.



3" X 14" SDS Blade

AGKB3X14

\$41

Ideal for cab forward designed vehicles with wide dashes that require an extended reach to access the urethane. Ideal for new model vehicles.