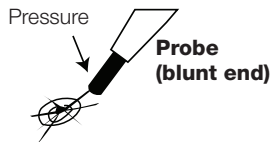
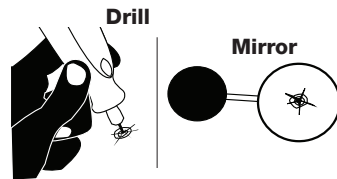


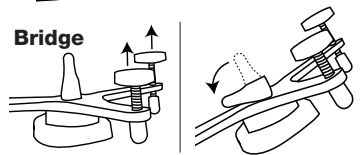
**Step 1** Examine the break & prep the glass. Ideal glass temp should be 35°F to 85°F. Test break stability by applying small amount of pressure with probe around the break.



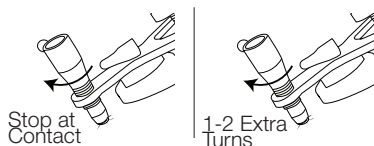
**Step 2** Clean loose debris with probe point. If impact point can't be felt, drill to create an opening. Many breaks will not need to be drilled. Attach mirror to inside of glass.



**Step 3** Back out bridge adjusting screws & injector. Place the Bridge & Injector on glass. Ideally injector is below suction cup.



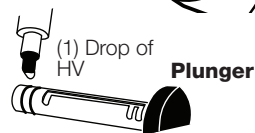
**Step 4** Position Injector over ctr. of break. Thread injector down until it makes contact with glass, then add 1-2 additional turns.



**Step 5** Use mirror to adjust horizontal alignment, ensuring good seal on the break. Adjust leveling screws until o-ring seal is evenly compressed.



**Step 6** Apply HV resin to the Brown Plunger Seals at base of plunger to lubricate.

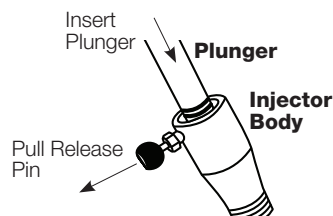


**Step 7** Apply 5 drops of Diamond Clear™ Resin into the injector body. Check GT Tools® Catalog for proper resin choice.

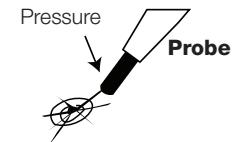


**Step 8** If outdoors, place a UV Sunshade (GT Tools® Part# SS) over the Repair Area.

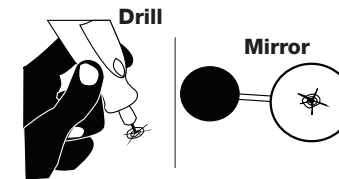
**Step 9** Pull the Blue Release Pin knob on the side of the injector body and insert the plunger into the injector body. Release the pin, twisting until the pin slips into the plunger groove.



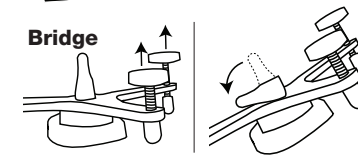
**Step 1** Examine the break & prep the glass. Glass temp must be 35°F to 85°F. Test break stability by applying small amount of pressure with probe around the break.



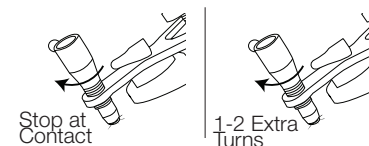
**Step 2** Clean out loose debris with probe. If impact point can't be felt, drill to create an opening. Many breaks will not need to be drilled. Attach mirror to inside of glass.



**Step 3** Back out bridge adjusting screws & injector. Place the Bridge & Injector on glass. Ideally injector is below suction cup.



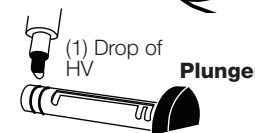
**Step 4** Position the Injector over the break. Thread injector down until it makes contact with glass, then add 1-2 additional turns.



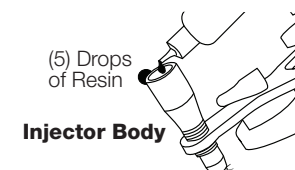
**Step 5** Use mirror to adjust horizontal alignment, ensuring good seal on the break. Adjust leveling screws until o-ring seal is evenly compressed.



**Step 6** Apply HV resin to the Brown Plunger Seals at base of plunger.

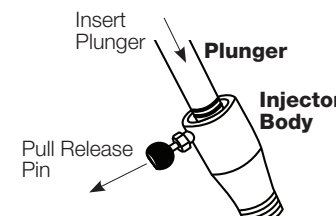


**Step 7** Apply 5 drops of Diamond Clear™ Resin into the injector body. Check GT Tools® Catalog for proper resin choice.



**Step 8** If outdoors, place a UV Sunshade (GT Tools® Part# SS) over the Repair Area.

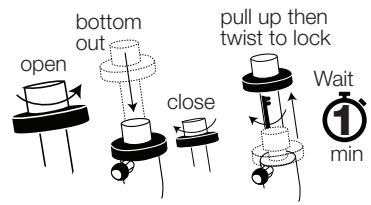
**Step 9** Pull the Blue Release Pin knob on the side of the injector body and insert the plunger into the injector body, twisting until the pin slips into the plunger groove.



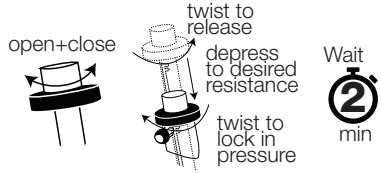


# SuperStar™ SpeedLock™ Windshield Repair System Training Manual

**Step 10** Vaccum Cycle: Open Air Release Knob, Bottom out plunger, Close Air Release, slowly pull plunger up and twist to lock in vacuum. Wait 1 Minute.



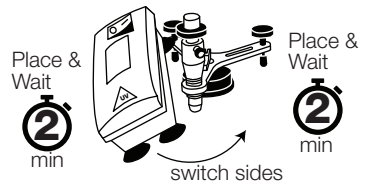
**Step 11** Pressure Cycle: Open and Close Air Release, twist plunger, depress until there is fair resistance, twist plunger to lock into desired pressure slot. Wait 2 Minutes.



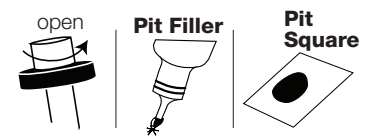
**Step 12** Alternate between cycles of step 10 (Vacuum: 1 min) and Step 11 (Pressure: 2 min) until break is completely filled.



**Step 13** During Final Pressure Cycle: Attach UV Lamp to glass next to injector tip. Plug in & Turn on for curing cycle. Wait 2 minutes. Move light to opposite side. Wait 2 minutes.



**Step 14** Open Air Release, Remove suction cup, Apply small bead of PF above the pit on glass. Cover bead with Pit Square.



**Step 15** Move UV Lamp Over Pit Square. Turn on for curing cycle. Wait 3 minutes.



**Step 16** Remove UV Lamp & Pit Square. Scrape clean razor blade (held perpendicular to glass) vigorously back & forth until only a small circle of pit filler remains.



**Step 17** Apply small bead of Pit Gloss to the pit. Polish with paper towel or cork until glossy finish achieved.



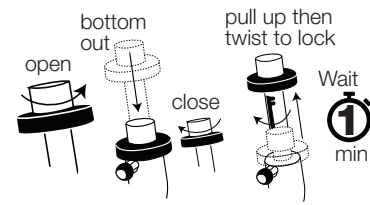
**Step 18** Clean the glass. Clean ALL injector components with isopropyl alcohol at the end of each day. DONE!

**CLEAN EVERYTHING**

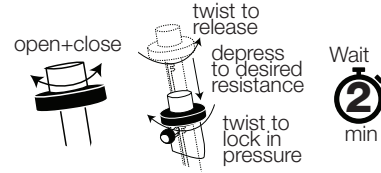


# SuperStar™ SpeedLock™ Windshield Repair System Training Manual

**Step 10** Vaccum Cycle: Open Air Release Knob, Bottom out plunger, Close Air Release, slowly pull plunger up and twist to lock in vacuum. Wait 1 Minute.



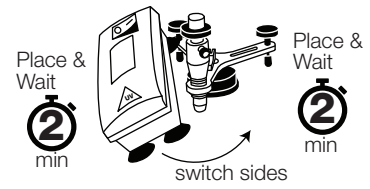
**Step 11** Pressure Cycle: Open and Close Air Release, twist plunger, depress until there is fair resistance, twist plunger to lock into desired pressure slot. Wait 2 Minutes.



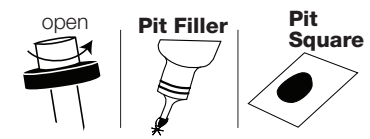
**Step 12** Alternate between cycles of step 10 (Vacuum: 1 min) and Step 11 (Pressure: 2 min) until break is completely filled.



**Step 13** During Final Pressure Cycle: Attach UV Lamp to glass next to injector tip. Plug in & Turn on for curing cycle. Wait 2 minutes. Move light to opposite side. Wait 2 minutes.



**Step 14** Open Air Release, Remove suction cup, Apply small bead of PF above the pit on glass. Cover bead with Pit Square.



**Step 15** Move UV Lamp Over Pit Square. Turn on for curing cycle. Wait 3 minutes.



**Step 16** Remove UV Lamp & Pit Square. Scrape clean razor blade (held perpendicular to glass) back & forth until only a small circle of pit filler remains.



**Step 17** Apply small bead of Pit Polish to the pit. Polish with paper towel or cork until glossy finish achieved.



**Step 18** Clean the glass. Clean ALL injector components with isopropyl alcohol at the end of each day. DONE!

**CLEAN EVERYTHING**