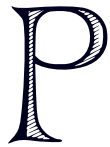




ROMAN AND WILLIAMS
GUILD
NEW YORK



PERGAMENA

PERGAMENA *for GUILD*

Pergamena is a family-owned business with roots in 16th Century Germany, where members of the Meyer family first took up tanning and leatherwork. Since 1981, they have been in the Hudson River Valley. Recognized as a North American leader in leatherwork, their dedication to superior craftsmanship is rooted in a sense of belonging to an ancient tradition that they keep alive as they blend it with modern advancements and aesthetics. Their leathers are vegetable-tanned and ethically and environmentally sound.

Please note that the colors shown right will vary depending on your individual computer screen settings.



COMPOSITION COW HIDE	CODE CW UN 0104	COLOR UNDYED
WEIGHT 4OZ	FINISH NATURAL FULL GRAIN	AVERAGE HIDE SIZE 20SF



COMPOSITION COW HIDE	CODE CW TR 0104	COLOR TERRA
WEIGHT 4OZ	FINISH NATURAL FULL GRAIN	AVERAGE HIDE SIZE 20SF



COMPOSITION COW HIDE	CODE SW COW CG04	COLOR COGNAC
WEIGHT 4OZ	FINISH WAXED	AVERAGE HIDE SIZE 20SF



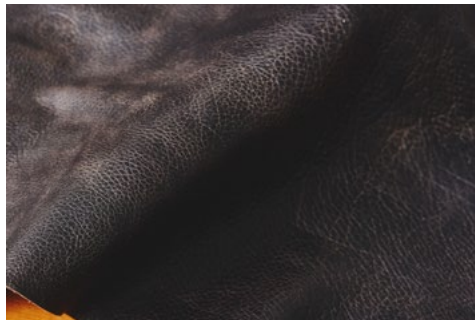
COMPOSITION COW HIDE	CODE CW COW HB04	COLOR HONEY BROWN
WEIGHT 4OZ	FINISH WAXED	AVERAGE HIDE SIZE 20SF



COMPOSITION COW HIDE	CODE SW COW UN04	COLOR UNDYED
WEIGHT 4OZ	FINISH WAXED	AVERAGE HIDE SIZE 20SF



COMPOSITION CALF HIDE	CODE CF GY 0103	COLOR GRAY
WEIGHT 3OZ	FINISH NATURAL FULL GRAIN	AVERAGE HIDE SIZE 7SF



COMPOSITION COW HIDE	CODE SW COW CB04	COLOR CHOCOLATE BROWN
WEIGHT 4OZ	FINISH WAXED	AVERAGE HIDE SIZE 20SF



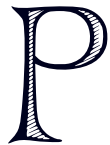
COMPOSITION COW HIDE	CODE CW OX 0504	COLOR OXBLOOD
WEIGHT 4OZ	FINISH WAXED	AVERAGE HIDE SIZE 20SF



COMPOSITION GOAT HIDE	CODE SW COW PK04	COLOR PUMPKIN
WEIGHT 4OZ	FINISH WAXED	AVERAGE HIDE SIZE 6SF



ROMAN AND WILLIAMS
GUILD
 NEW YORK



PERGAMENA

PERGAMENA *for GUILD*

Pergamena is a family-owned business with roots in *16th Century Germany*, where members of the *Meyer* family first took up tanning and leatherwork. Since 1981, they have been in the *Hudson River Valley*. Recognized as a *North American* leader in leatherwork, their dedication to superior craftsmanship is rooted in a sense of belonging to an ancient tradition that they keep alive as they blend it with modern advancements and aesthetics. Their leathers are vegetable-tanned and ethically and environmentally sound.

Please note that the colors shown right will vary depending on your individual computer screen settings.



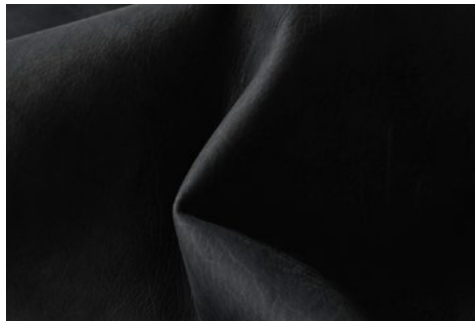
COMPOSITION COW HIDE	CODE CW BS 0104	COLOR BLUESTONE
WEIGHT 4OZ	FINISH NATURAL FULL GRAIN	AVERAGE HIDE SIZE 20SF



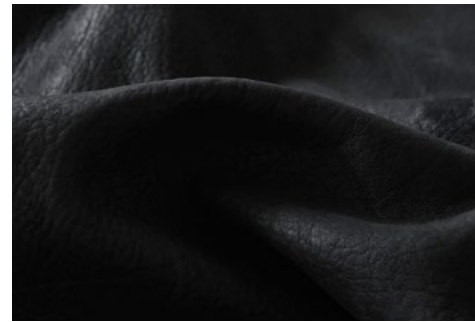
COMPOSITION COW HIDE	CODE SW COW NY04	COLOR NAVY
WEIGHT 4OZ	FINISH WAXED	AVERAGE HIDE SIZE 20SF



COMPOSITION COW HIDE	CODE CW DG2 0108	COLOR DARK GRAY #2
WEIGHT 8OZ	FINISH NATURAL FULL GRAIN	AVERAGE HIDE SIZE 20SF



COMPOSITION CALF HIDE	CODE CF BK 0103	COLOR BLACK
WEIGHT 3OZ	FINISH NATURAL FULL GRAIN	AVERAGE HIDE SIZE 7SF



COMPOSITION COW HIDE	CODE CW BK 0108	COLOR BLACK
WEIGHT 8OZ	FINISH NATURAL FULL GRAIN	AVERAGE HIDE SIZE 20SF



ROMAN AND WILLIAMS
GUILD
NEW YORK



MATERIAL NAME
BRIOSO MOHAIR VELVET

CODE
FF-20205

COLOR
AVORIO

COMPOSITION
100% MOHAIR

MATERIAL WIDTH
55IN



MATERIAL NAME
LEGATO CASHMERE
SILK VELVET

CODE
FF-20307

COLOR
PEARL

COMPOSITION
70% CASHMERE, 30% SILK

MATERIAL WIDTH
55IN



MATERIAL NAME
LEGATO CASHMERE
SILK VELVET

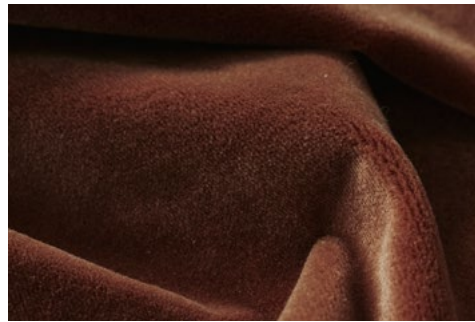
CODE
FF-20302

COLOR
LATTE

COMPOSITION
70% CASHMERE, 30% SILK

MATERIAL WIDTH
55IN

Fortuny
FORTUNY | VENEZIA



MATERIAL NAME
LEGATO CASHMERE
SILK VELVET

CODE
FF-20313

COLOR
CINNAMON
ROSE

COMPOSITION
70% CASHMERE, 30% SILK

MATERIAL WIDTH
55IN



MATERIAL NAME
FUGUE - MELANGE FLANNEL

CODE
FF-20106

COLOR
MUSHROOM

COMPOSITION
100% WOOL

MATERIAL WIDTH
59IN



MATERIAL NAME
FUGUE - MELANGE FLANNEL

CODE
FF-20108

COLOR
CHARCOAL

COMPOSITION
100% WOOL

MATERIAL WIDTH
59IN

FORTUNY for GUILD

Although *Mariano Fortuny* (1871-1949) practiced many disciplines, he is most famous for his remarkable layers of dyed and patterned fabrics. *Fortuny's* garments and textiles fuse history, anthropology, and art. Born in *Granada, Spain* he opened his business in *Venice, Italy* in 1921. Still operating today, the manufacturing facility and design laboratory continue to embrace *Fortuny's* passion for tradition. Complex processes are used to produce the finest luxurious and incredibly strong fabrics in *Fortuny's* unique and historic palette.



MATERIAL NAME
LEGATO CASHMERE
SILK VELVET

CODE
FF-20312

COLOR
SMOKE

COMPOSITION
70% CASHMERE, 30% SILK

MATERIAL WIDTH
55IN



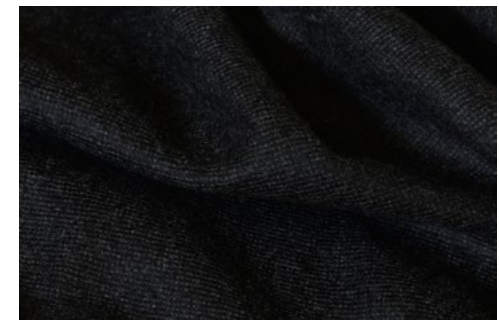
MATERIAL NAME
FUGUE - MELANGE FLANNEL

CODE
FF-20107

COLOR
TRUFFLE

COMPOSITION
100% WOOL

MATERIAL WIDTH
59IN



MATERIAL NAME
FUGUE - MELANGE FLANNEL

CODE
FF-20118

COLOR
DARK
CHARCOAL

COMPOSITION
100% WOOL

MATERIAL WIDTH
59IN



ROMAN AND WILLIAMS
GUILD
NEW YORK

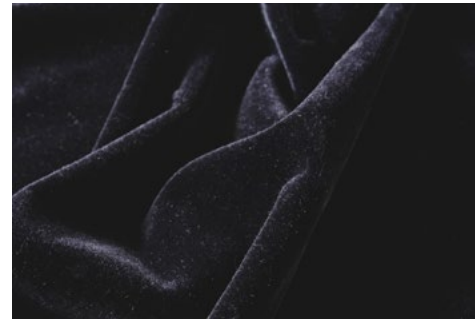


FORTUNY *for GUILD*

Although *Mariano Fortuny* (1871-1949) practiced many disciplines, he is most famous for his remarkable layers of dyed and patterned fabrics. *Fortuny's* garments and textiles fuse history, anthropology, and art. Born in *Granada, Spain* he opened his business in *Venice, Italy* in 1921. Still operating today, the manufacturing facility and design laboratory continue to embrace *Fortuny's* passion for tradition. Complex processes are used to produce the finest luxurious and incredibly strong fabrics in *Fortuny's* unique and historic palette.



MATERIAL NAME	CODE	COLOR
FUGUE - MELANGE FLANNEL	FF-20117	BLUE-GREEN
COMPOSITION	MATERIAL WIDTH	
100% WOOL	59IN	



MATERIAL NAME	CODE	COLOR
BRIOSO MOHAIR VELVET	FF-20208	LICORICE
COMPOSITION	MATERIAL WIDTH	
100% MOHAIR	55IN	



ROMAN AND WILLIAMS

GUILD

NEW YORK

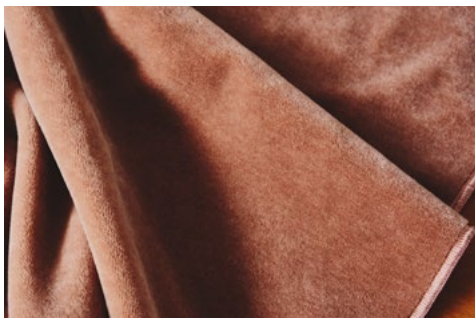


CHRISTOPHER HYLAND INCORPORATED

CHRISTOPHER HYLAND *for GUILD*

Christopher Hyland is a renowned purveyor of exquisite textiles from across the globe. Known as the premier supplier to top designers, architects and decorators, the firm is featured continuously in the pages of leading design publications. *RW Guild* is pleased to offer an expertly curated selection of heirloom-quality fabric to compliment our timeless furniture designs.

Please note that the colors shown right will vary depending on your individual computer screen settings.



MATERIAL NAME
HYLAND MOHAIR VELVET

CODE
HZ2004.17

COLOR
ROSE

COMPOSITION
100% MOHAIR PILE

MATERIAL WIDTH
54IN



MATERIAL NAME
ELYSEE

CODE
VS619

COLOR
MAUVE

COMPOSITION
100% SILK

MATERIAL WIDTH
51IN



MATERIAL NAME
ELYSEE

CODE
VS621

COLOR
CHARCOAL

COMPOSITION
100% SILK PILE

MATERIAL WIDTH
51IN



ROMAN AND WILLIAMS
GUILD
 NEW YORK



MATERIAL NAME ALPACA BOUCLE CODE 730015-01 COLOR CHANTILLY

COMPOSITION 36% ALPACA, 35% WOOL, 29% COTTON MATERIAL WIDTH 52IN



MATERIAL NAME ALPACA BOUCLE CODE 730015-02 COLOR YEARLING

COMPOSITION 36% ALPACA, 35% WOOL, 29% COTTON MATERIAL WIDTH 52IN



MATERIAL NAME WOOLY CODE 730008-02 COLOR FLEECE

COMPOSITION 51% WOOL, 35% LINEN, 14% COTTON MATERIAL WIDTH 53IN

ROGERS & GOFFIGON LTD

**ROGERS &
 GOFFIGON**
for GUILD

Rogers & Goffigon is one of the most respected designers and producers of impeccable high-quality home furnishing textiles in the world. Established in 1988, with a firm belief of artistic integrity and an insistence on quality many of their fabrics are manufactured at family-owned *European* mills in existence for generations, where skilled craftspeople with an *Old World* attention to detail employ traditional, centuries-old techniques to create superb woven goods.

Please note that the colors shown right will vary depending on your individual computer screen settings.



MATERIAL NAME ALPACA BOUCLE CODE 730015-05 COLOR PEPPER

COMPOSITION 36% ALPACA, 35% WOOL, 29% COTTON MATERIAL WIDTH 52IN



MATERIAL NAME ALPACA BOUCLE CODE 730015-03 COLOR CHESTNUT

COMPOSITION 36% ALPACA, 35% WOOL, 29% COTTON MATERIAL WIDTH 52IN



ROMAN AND WILLIAMS
GUILD
NEW YORK



MATERIAL NAME	CODE	COLOR
VIENNA VELVET	VIE3	POLKA
COMPOSITION	MATERIAL WIDTH	
96% COTTON, 4% MODAL	53IN	



MATERIAL NAME	CODE	COLOR
VIENNA VELVET	VIE5	CHARLESTON
COMPOSITION	MATERIAL WIDTH	
96% COTTON, 4% MODAL	53IN	



MATERIAL NAME	CODE	COLOR
VIENNA VELVET	VIE7	CHA CHA
COMPOSITION	MATERIAL WIDTH	
96% COTTON, 4% MODAL	53IN	

de Le Cuona

DE LE CUONA *for GUILD*

Bernie de Le Cuona founded the world's largest own-brand linen collection in 1992 and continues to be its sole designer and creative force. She is acclaimed for her commitment to the raw sophistication of the *de Le Cuona* fabric, which pushes the boundaries of design, exploring how linen, wool, velvet and cashmere can combine to create contrasting layers of textures. She sources the finest fibres from around the world, which are then meticulously crafted to create exquisitely understated textiles.

Please note that the colors shown right will vary depending on your individual computer screen settings.