



ROMAN AND WILLIAMS  
**GUILD**  
NEW YORK



COMPOSITION COW HIDE  
WEIGHT 4OZ  
CODE CW UN 0104  
FINISH NATURAL FULL GRAIN  
COLOR UNDYED  
AVERAGE HIDE SIZE 20SF



COMPOSITION COW HIDE  
WEIGHT 4OZ  
CODE CW TR 0104  
FINISH NATURAL FULL GRAIN  
COLOR TERRA  
AVERAGE HIDE SIZE 20SF



COMPOSITION COW HIDE  
WEIGHT 4OZ  
CODE SW COW CG04  
FINISH WAXED  
COLOR COGNAC  
AVERAGE HIDE SIZE 20SF



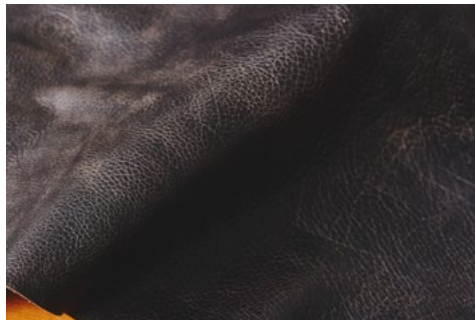
COMPOSITION COW HIDE  
WEIGHT 4OZ  
CODE CW COW HB04  
FINISH WAXED  
COLOR HONEY BROWN  
AVERAGE HIDE SIZE 20SF



COMPOSITION COW HIDE  
WEIGHT 4OZ  
CODE SW COW UN04  
FINISH WAXED  
COLOR UNDYED  
AVERAGE HIDE SIZE 20SF



COMPOSITION CALF HIDE  
WEIGHT 3OZ  
CODE CF GY 0103  
FINISH NATURAL FULL GRAIN  
COLOR GRAY  
AVERAGE HIDE SIZE 7SF



COMPOSITION COW HIDE  
WEIGHT 4OZ  
CODE SW COW CB04  
FINISH WAXED  
COLOR CHOCOLATE BROWN  
AVERAGE HIDE SIZE 20SF



COMPOSITION COW HIDE  
WEIGHT 4OZ  
CODE CW OX 0504  
FINISH WAXED  
COLOR OXBLOOD  
AVERAGE HIDE SIZE 20SF



COMPOSITION GOAT HIDE  
WEIGHT 4OZ  
CODE SW COW PK04  
FINISH WAXED  
COLOR PUMPKIN  
AVERAGE HIDE SIZE 6SF

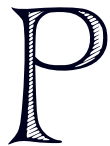
# PERGAMENA *for GUILD*

*Pergamena* is a family-owned business with roots in *16th Century Germany*, where members of the *Meyer* family first took up tanning and leatherwork. Since 1981, they have been in the *Hudson River Valley*. Recognized as a *North American* leader in leatherwork, their dedication to superior craftsmanship is rooted in a sense of belonging to an ancient tradition that they keep alive as they blend it with modern advancements and aesthetics. Their leathers are vegetable-tanned and ethically and environmentally sound.

*Please note that the colors shown right will vary depending on your individual computer screen settings.*



ROMAN AND WILLIAMS  
**GUILD**  
 NEW YORK



PERGAMENA

# PERGAMENA *for GUILD*

*Pergamena* is a family-owned business with roots in *16th Century Germany*, where members of the *Meyer* family first took up tanning and leatherwork. Since 1981, they have been in the *Hudson River Valley*. Recognized as a *North American* leader in leatherwork, their dedication to superior craftsmanship is rooted in a sense of belonging to an ancient tradition that they keep alive as they blend it with modern advancements and aesthetics. Their leathers are vegetable-tanned and ethically and environmentally sound.

*Please note that the colors shown right will vary depending on your individual computer screen settings.*



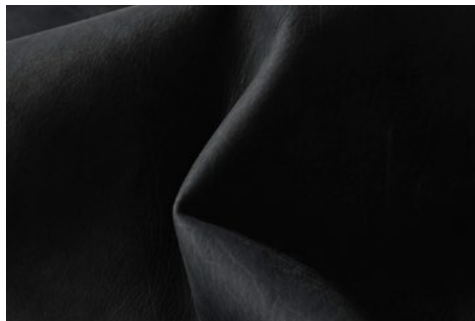
COMPOSITION COW HIDE	CODE CW BS 0104	COLOR BLUESTONE
WEIGHT 4OZ	FINISH NATURAL FULL GRAIN	AVERAGE HIDE SIZE 20SF



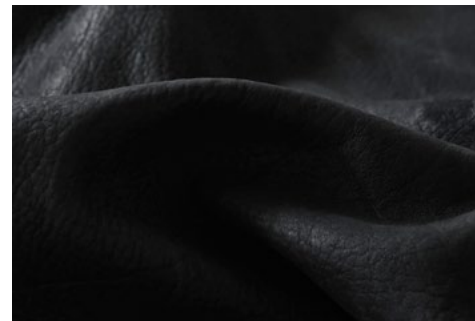
COMPOSITION COW HIDE	CODE SW COW NY04	COLOR NAVY
WEIGHT 4OZ	FINISH WAXED	AVERAGE HIDE SIZE 20SF



COMPOSITION COW HIDE	CODE CW DG2 0108	COLOR DARK GRAY #2
WEIGHT 8OZ	FINISH NATURAL FULL GRAIN	AVERAGE HIDE SIZE 20SF



COMPOSITION CALF HIDE	CODE CF BK 0103	COLOR BLACK
WEIGHT 3OZ	FINISH NATURAL FULL GRAIN	AVERAGE HIDE SIZE 7SF



COMPOSITION COW HIDE	CODE CW BK 0108	COLOR BLACK
WEIGHT 8OZ	FINISH NATURAL FULL GRAIN	AVERAGE HIDE SIZE 20SF



ROMAN AND WILLIAMS  
**GUILD**  
NEW YORK



MATERIAL NAME  
BRIOSO MOHAIR VELVET

CODE  
FF-20205

COLOR  
AVORIO

COMPOSITION  
100% MOHAIR

MATERIAL WIDTH  
55IN



MATERIAL NAME  
LEGATO CASHMERE  
SILK VELVET

CODE  
FF-20307

COLOR  
PEARL

COMPOSITION  
70% CASHMERE, 30% SILK

MATERIAL WIDTH  
55IN



MATERIAL NAME  
LEGATO CASHMERE  
SILK VELVET

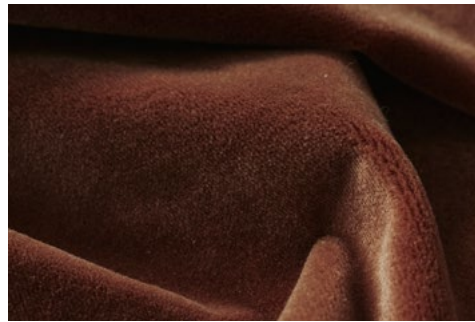
CODE  
FF-20302

COLOR  
LATTE

COMPOSITION  
70% CASHMERE, 30% SILK

MATERIAL WIDTH  
55IN

*Fortuny*  
FORTUNY | VENEZIA



MATERIAL NAME  
LEGATO CASHMERE  
SILK VELVET

CODE  
FF-20313

COLOR  
CINNAMON  
ROSE

COMPOSITION  
70% CASHMERE, 30% SILK

MATERIAL WIDTH  
55IN



MATERIAL NAME  
FUGUE - MELANGE FLANNEL

CODE  
FF-20106

COLOR  
MUSHROOM

COMPOSITION  
100% WOOL

MATERIAL WIDTH  
59IN



MATERIAL NAME  
FUGUE - MELANGE FLANNEL

CODE  
FF-20108

COLOR  
CHARCOAL

COMPOSITION  
100% WOOL

MATERIAL WIDTH  
59IN

## FORTUNY for GUILD

Although *Mariano Fortuny* (1871-1949) practiced many disciplines, he is most famous for his remarkable layers of dyed and patterned fabrics. *Fortuny's* garments and textiles fuse history, anthropology, and art. Born in *Granada, Spain* he opened his business in *Venice, Italy* in 1921. Still operating today, the manufacturing facility and design laboratory continue to embrace *Fortuny's* passion for tradition. Complex processes are used to produce the finest luxurious and incredibly strong fabrics in *Fortuny's* unique and historic palette.



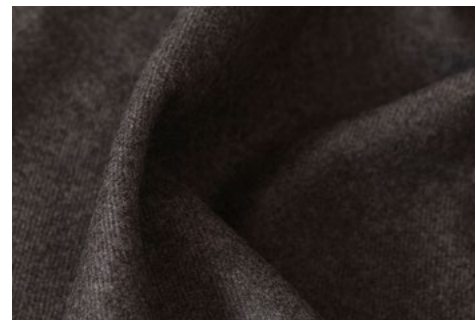
MATERIAL NAME  
LEGATO CASHMERE  
SILK VELVET

CODE  
FF-20312

COLOR  
SMOKE

COMPOSITION  
70% CASHMERE, 30% SILK

MATERIAL WIDTH  
55IN



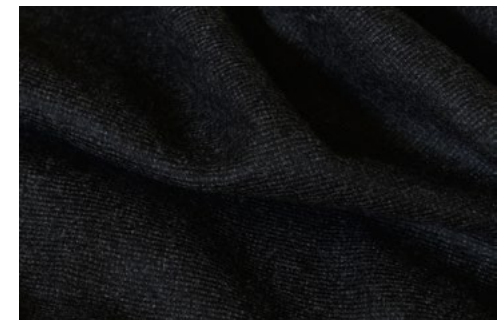
MATERIAL NAME  
FUGUE - MELANGE FLANNEL

CODE  
FF-20107

COLOR  
TRUFFLE

COMPOSITION  
100% WOOL

MATERIAL WIDTH  
59IN



MATERIAL NAME  
FUGUE - MELANGE FLANNEL

CODE  
FF-20118

COLOR  
DARK  
CHARCOAL

COMPOSITION  
100% WOOL

MATERIAL WIDTH  
59IN



ROMAN AND WILLIAMS  
**GUILD**  
NEW YORK

---



## FORTUNY *for GUILD*

Although *Mariano Fortuny* (1871-1949) practiced many disciplines, he is most famous for his remarkable layers of dyed and patterned fabrics. *Fortuny's* garments and textiles fuse history, anthropology, and art. Born in *Granada, Spain* he opened his business in *Venice, Italy* in 1921. Still operating today, the manufacturing facility and design laboratory continue to embrace *Fortuny's* passion for tradition. Complex processes are used to produce the finest luxurious and incredibly strong fabrics in *Fortuny's* unique and historic palette.



MATERIAL NAME	CODE	COLOR
FUGUE - MELANGE FLANNEL	FF-20117	BLUE-GREEN
COMPOSITION	MATERIAL WIDTH	
100% WOOL	59IN	



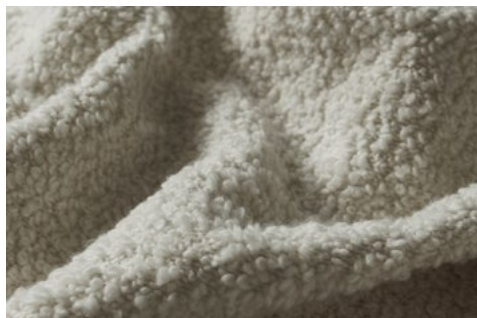
MATERIAL NAME	CODE	COLOR
BRIOSO MOHAIR VELVET	FF-20208	LICORICE
COMPOSITION	MATERIAL WIDTH	
100% MOHAIR	55IN	



ROMAN AND WILLIAMS

**GUILD**

NEW YORK



MATERIAL NAME	CODE	COLOR
ALPACA BOUCLE	730015-01	CHANTILLY

COMPOSITION	MATERIAL WIDTH
36% ALPACA, 35% WOOL, 29% COTTON	52IN



MATERIAL NAME	CODE	COLOR
ALPACA BOUCLE	730015-02	YEARLING

COMPOSITION	MATERIAL WIDTH
36% ALPACA, 35% WOOL, 29% COTTON	52IN



MATERIAL NAME	CODE	COLOR
WOOLY	730008-02	FLEECE

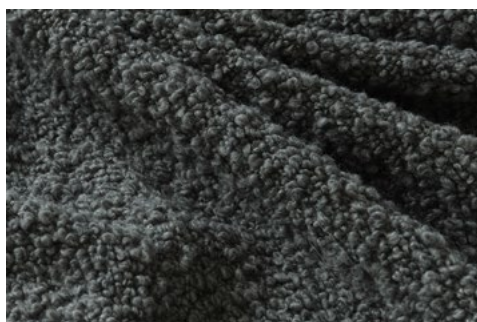
COMPOSITION	MATERIAL WIDTH
51% WOOL, 35% LINEN, 14% COTTON	53IN

ROGERS & GOFFIGON LTD

**ROGERS &  
GOFFIGON**  
*for GUILD*

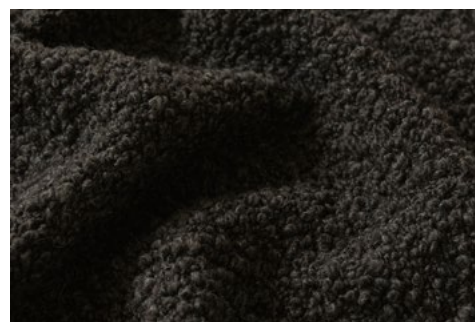
*Rogers & Goffigon* is one of the most respected designers and producers of impeccable high-quality home furnishing textiles in the world. Established in 1988, with a firm belief of artistic integrity and an insistence on quality many of their fabrics are manufactured at family-owned *European* mills in existence for generations, where skilled craftspeople with an *Old World* attention to detail employ traditional, centuries-old techniques to create superb woven goods.

*Please note that the colors shown right will vary depending on your individual computer screen settings.*



MATERIAL NAME	CODE	COLOR
ALPACA BOUCLE	730015-05	PEPPER

COMPOSITION	MATERIAL WIDTH
36% ALPACA, 35% WOOL, 29% COTTON	52IN



MATERIAL NAME	CODE	COLOR
ALPACA BOUCLE	730015-03	CHESTNUT

COMPOSITION	MATERIAL WIDTH
36% ALPACA, 35% WOOL, 29% COTTON	52IN



ROMAN AND WILLIAMS

**GUILD**

NEW YORK

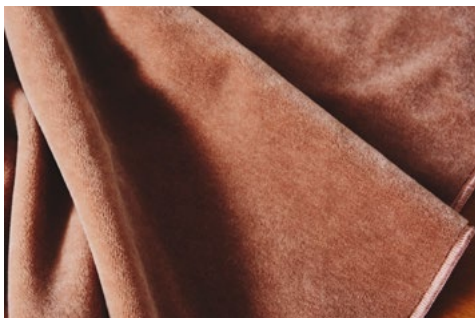


CHRISTOPHER HYLAND INCORPORATED

# CHRISTOPHER HYLAND *for GUILD*

*Christopher Hyland* is a renowned purveyor of exquisite textiles from across the globe. Known as the premier supplier to top designers, architects and decorators, the firm is featured continuously in the pages of leading design publications. *RW Guild* is pleased to offer an expertly curated selection of heirloom-quality fabric to compliment our timeless furniture designs.

*Please note that the colors shown right will vary depending on your individual computer screen settings.*



MATERIAL NAME  
HYLAND MOHAIR VELVET

CODE  
HZ2004.17

COLOR  
ROSE

COMPOSITION  
100% MOHAIR PILE

MATERIAL WIDTH  
54IN



MATERIAL NAME  
LIBERTY SILK VELVET

CODE  
IZ1000.24

COLOR  
SKY

COMPOSITION  
100% SILK

MATERIAL WIDTH  
54IN



MATERIAL NAME  
ELYSEE

CODE  
VS619

COLOR  
MAUVE

COMPOSITION  
100% SILK

MATERIAL WIDTH  
51IN



MATERIAL NAME  
ELYSEE

CODE  
VS621

COLOR  
CHARCOAL

COMPOSITION  
100% SILK PILE

MATERIAL WIDTH  
51IN



ROMAN AND WILLIAMS  
**GUILD**  
NEW YORK



MATERIAL NAME	CODE	COLOR
VIENNA VELVET	VIE3	POLKA
COMPOSITION	MATERIAL WIDTH	
96% COTTON, 4% MODAL	53IN	



MATERIAL NAME	CODE	COLOR
VIENNA VELVET	VIE5	CHARLESTON
COMPOSITION	MATERIAL WIDTH	
96% COTTON, 4% MODAL	53IN	



MATERIAL NAME	CODE	COLOR
VIENNA VELVET	VIE7	CHA CHA
COMPOSITION	MATERIAL WIDTH	
96% COTTON, 4% MODAL	53IN	

*de Le Cuona*

## DE LE CUONA *for GUILD*

*Bernie de Le Cuona* founded the world's largest own-brand linen collection in 1992 and continues to be its sole designer and creative force. She is acclaimed for her commitment to the raw sophistication of the *de Le Cuona* fabric, which pushes the boundaries of design, exploring how linen, wool, velvet and cashmere can combine to create contrasting layers of textures. She sources the finest fibres from around the world, which are then meticulously crafted to create exquisitely understated textiles.

*Please note that the colors shown right will vary depending on your individual computer screen settings.*