

ROMAN AND WILLIAMS

GUILD

NEW YORK

RW GUILD ORIGINAL BELGIAN LINEN

Belgian linen is known for its high level of comfort, quality and durability. This Belgian linen is produced in a family mill founded in 1858 and now managed by the fifth generation in Flanders, the northern region of Belgium. Linen is woven from flax and the best flax in the world grows in Flanders. This linen is made with great care and sustainably produced by experienced and passionate craftsmen working at the highest standards.

PLEASE NOTE THAT THE COLORS SHOWN RIGHT WILL VARY DEPENDING ON YOUR INDIVIDUAL COMPUTER SCREEN SETTINGS.



COMPOSITION
100% ORGANIC LINEN

COLOR
WILD GINGER

MATERIAL WIDTH
54IN OR 93IN

COUNTRY OF ORIGIN
BELGIUM

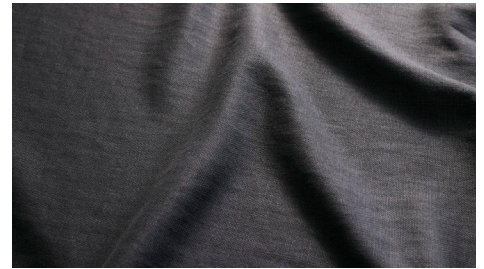


COMPOSITION
100% ORGANIC LINEN

COLOR
BLACK TRUMPET

MATERIAL WIDTH
54IN

COUNTRY OF ORIGIN
BELGIUM



COMPOSITION
100% ORGANIC LINEN

COLOR
GRISSETTE

MATERIAL WIDTH
54IN

COUNTRY OF ORIGIN
BELGIUM

FIFTY-THREE HOWARD STREET
NEW YORK, NY 10013



RWGUILD.COM | @RWGUILD
212-852-9099

ROMAN AND WILLIAMS

GUILD

NEW YORK

RW GUILD ORIGINAL SUEDE

Soft suede is a type of leather made from the underside of the animal skin and is known for its velvety, napped finish. Suede's rich surface is matte, unlike glossy leather, giving suede a luxurious appearance. With Italy being virtually synonymous with fine leather, this sumptuous suede is produced in an Italian tannery where it is pressed with a hot metal plate under high pressure to give it a smooth, tailored appearance.

PLEASE NOTE THAT THE COLORS SHOWN WILL VARY DEPENDING ON YOUR INDIVIDUAL COMPUTER SCREEN SETTINGS.



HIDE TYPE
BOVINE

WEIGHT & AVG. HIDE SIZE
3OZ, 16SF

COLOR
CHESTNUT

COUNTRY OF ORIGIN
ITALY



HIDE TYPE
BOVINE

WEIGHT & AVG. HIDE SIZE
3OZ, 16SF

COLOR
DOVE

COUNTRY OF ORIGIN
ITALY



HIDE TYPE
BOVINE

WEIGHT & AVG. HIDE SIZE
3OZ, 16SF

COLOR
GREY HERON

COUNTRY OF ORIGIN
ITALY



HIDE TYPE
BOVINE

WEIGHT & AVG. HIDE SIZE
3OZ, 16SF

COLOR
MOREL

COUNTRY OF ORIGIN
ITALY



HIDE TYPE
BOVINE

WEIGHT & AVG. HIDE SIZE
3OZ, 16SF

COLOR
MINK

COUNTRY OF ORIGIN
ITALY

FIFTY-THREE HOWARD STREET
NEW YORK, NY 10013



RWGUILD.COM | @RWGUILD
212-852-9099

ROMAN AND WILLIAMS

GUILD

NEW YORK

RW GUILD ORIGINAL NATURA CASHMERE SILK VELVET

The ultra-soft, ultra-luxurious cashmere velvet is produced in a heritage mill in Italy with centuries of tradition and knowledge. The wool is sustainably sourced from cashmere goats raised on the Asia plateau in Inner Mongolia where the harsh, extreme conditions produce a remarkably fine fiber. The cashmere is spun with silk to create the exclusive velvet that is carefully brushed and finished for more than 48 working hours to produce the finest, lustrous cashmere velvet.

PLEASE NOTE THAT THE COLORS SHOWN RIGHT WILL VARY DEPENDING ON YOUR INDIVIDUAL COMPUTER SCREEN SETTINGS.



COMPOSITION
40% CASHMERE 18% SILK
32% COTTON 10% POLYESTER

COLOR
PALE PORCELAIN

MATERIAL WIDTH
55IN

COUNTRY OF ORIGIN
ITALY



COMPOSITION
40% CASHMERE 18% SILK
32% COTTON 10% POLYESTER

COLOR
WILD GINGER

MATERIAL WIDTH
55IN

COUNTRY OF ORIGIN
ITALY

FIFTY-THREE HOWARD STREET
NEW YORK, NY 10013



RWGUILD.COM | @RWGUILD
212-852-9099

ROMAN AND WILLIAMS

GUILD

NEW YORK

CHRISTOPHER HYLAND *for RW GUILD*



CHRISTOPHER HYLAND INCORPORATED

Christopher Hyland is a renowned purveyor of exquisite textiles from across the globe. Known as the premier supplier to top designers, architects and decorators, the firm is featured continuously in the pages of leading design publications. RW Guild is pleased to offer an expertly curated selection of heirloom-quality fabric to compliment our timeless furniture designs.

PLEASE NOTE THAT THE COLORS SHOWN RIGHT WILL VARY DEPENDING ON YOUR INDIVIDUAL COMPUTER SCREEN SETTINGS.



MATERIAL
ELYSEE

CODE
VS619

COLOR
MAUVE

COMPOSITION
100% SILK

MATERIAL WIDTH
51IN

MATERIAL
ELYSEE

CODE
VS621

COLOR
CHARCOAL

COMPOSITION
100% SILK PILE

MATERIAL WIDTH
51IN

FIFTY-THREE HOWARD STREET
NEW YORK, NY 10013



RWGUILD.COM | @RWGUILD
212-852-9099

ROMAN AND WILLIAMS

GUILD

NEW YORK

FORTUNY *for RW GUILD*

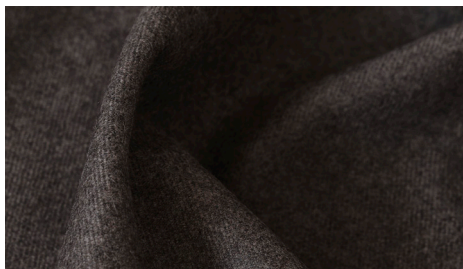


Although Mariano Fortuny (1871-1949) practiced many disciplines, he is most famous for his remarkable layers of dyed and patterned fabrics. Fortuny's garments and textiles fuse history, anthropology, and art. Born in Granada, Spain he opened his business in Venice, Italy in 1921. Still operating today, the manufacturing facility and design laboratory continue to embrace Fortuny's passion for tradition. Complex processes are used to produce the finest luxurious and incredibly strong fabrics in Fortuny's unique and historic palette.

PLEASE NOTE THAT THE COLORS SHOWN RIGHT WILL VARY DEPENDING ON YOUR INDIVIDUAL COMPUTER SCREEN SETTINGS.



MATERIAL NAME	CODE	COLOR
FUGUE - MELANGE FLANNEL	FF-20108	CHARCOAL
COMPOSITION	MATERIAL WIDTH	
100% WOOL	59IN	



MATERIAL	CODE	COLOR
FUGUE - MELANGE FLANNEL	FF-20107	TRUFFLE
COMPOSITION	MATERIAL WIDTH	
100% WOOL	59IN	



MATERIAL NAME	CODE	COLOR
FUGUE - MELANGE FLANNEL	FF-20119	MIDNIGHT
COMPOSITION	MATERIAL WIDTH	
100% WOOL	59IN	



GUILD

NEW YORK

PERGAMENA FOR *RW GUILD*

P

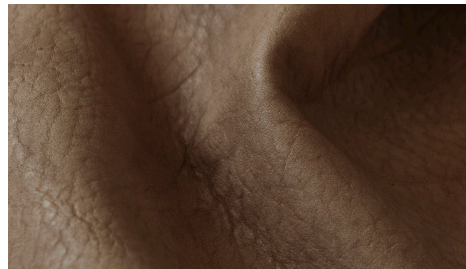
PERGAMENA

Pergamena is a family-owned business with roots in 16th Century Germany, where members of the Meyer family first took up tanning and leatherwork. Since 1981, they have been in the Hudson River Valley. Recognized as a North American leader in leatherwork, their dedication to superior craftsmanship is rooted in a sense of belonging to an ancient tradition that they keep alive as they blend it with modern advancements and aesthetics. Their leathers are vegetable-tanned and ethically and environmentally sound.

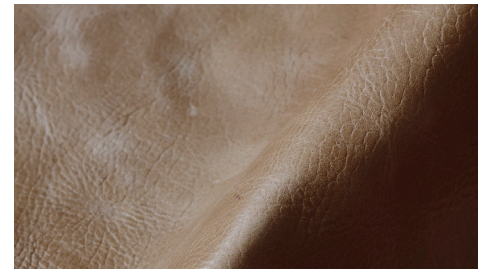
PLEASE NOTE THAT THE COLORS SHOWN RIGHT WILL VARY DEPENDING ON YOUR INDIVIDUAL COMPUTER SCREEN SETTINGS.



COMPOSITION COW HIDE	CODE CW UN 0103	COLOR UNDYED
WEIGHT 3OZ	FINISH NATURAL FULL GRAIN	AVG. HIDE SIZE 20SF



COMPOSITION COW HIDE	CODE CW TR 0103	COLOR TERRA
WEIGHT 3OZ	FINISH NATURAL FULL GRAIN	AVG. HIDE SIZE 20SF



COMPOSITION COW HIDE	CODE SW COW TR03	COLOR TERRA
WEIGHT 3OZ	FINISH WAXED	AVG. HIDE SIZE 20SF



COMPOSITION COW HIDE	CODE COW CO 0103	COLOR COGNAC
WEIGHT 3OZ	FINISH NATURAL FULL GRAIN	AVG. HIDE SIZE 20SF



COMPOSITION COW HIDE	CODE SW COW CG03	COLOR COGNAC
WEIGHT 3OZ	FINISH WAXED	AVG. HIDE SIZE 20SF



COMPOSITION COW HIDE	CODE SW COW SB03	COLOR SADDLE BROWN
WEIGHT 3OZ	FINISH WAXED	AVG. HIDE SIZE 20SF



COMPOSITION COW HIDE	CODE COW HB0103	COLOR HONEY BROWN
WEIGHT 3OZ	FINISH NATURAL FULL GRAIN	AVERAGE HIDE SIZE 20SF



COMPOSITION COW HIDE	CODE SW COW HB03	COLOR HONEY BROWN
WEIGHT 3OZ	FINISH WAXED	AVERAGE HIDE SIZE 20SF



COMPOSITION COW HIDE	CODE COW UN 0103	COLOR UNDYED
WEIGHT 3OZ	FINISH WAXED	AVG. HIDE SIZE 20SF



PERGAMENA FOR *RW GUILD*



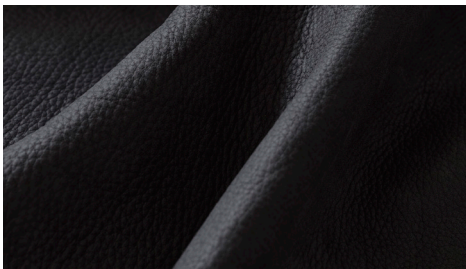
COMPOSITION COW HIDE
 CODE COW CB 0103
 COLOR CHOCOLATE BROWN
 WEIGHT 3OZ
 FINISH NATURAL FULL GRAIN
 AVERAGE HIDE SIZE 20SF



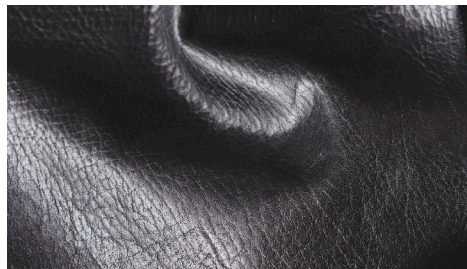
COMPOSITION COW HIDE
 CODE SW COW CB03
 COLOR CHOCOLATE BROWN
 WEIGHT 3OZ
 FINISH WAXED
 AVERAGE HIDE SIZE 20SF



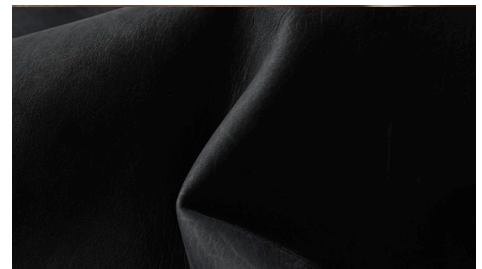
COMPOSITION COW HIDE
 CODE CW OX 0503
 COLOR OXBLOOD
 WEIGHT 3OZ
 FINISH WAXED
 AVG. HIDE SIZE 20SF



COMPOSITION COW HIDE
 CODE COW NY 0103
 COW NY 0108
 COLOR NAVY
 WEIGHT 3OZ
 FINISH WAXED
 AVG. HIDE SIZE 20SF



COMPOSITION COW HIDE
 CODE SW COW NY03
 COLOR NAVY
 WEIGHT 3OZ
 FINISH WAXED
 AVG. HIDE SIZE 20SF



COMPOSITION CALF HIDE
 CODE CF BK 0103
 COLOR BLACK
 WEIGHT 3OZ
 FINISH NATURAL FULL GRAIN
 AVG. HIDE SIZE 7SF



COMPOSITION COW HIDE
 CODE CW BK 0103
 CW BK 0108
 COLOR BLACK
 WEIGHT 3OZ
 FINISH NATURAL FULL GRAIN
 AVG. HIDE SIZE 20SF



COMPOSITION COW HIDE
 CODE SW COW BK03
 COLOR BLACK
 WEIGHT 3OZ
 FINISH WAXED
 AVG. HIDE SIZE 20SF



ROMAN AND WILLIAMS

GUILD

NEW YORK

ROGERS & GOFFIGON *for RW GUILD*

ROGERS & GOFFIGON LTD

Rogers & Goffigon is one of the most respected designers and producers of impeccable high-quality home furnishing textiles in the world. Established in 1988, with a firm belief of artistic integrity and an insistence on quality many of their fabrics are manufactured at family-owned *European* mills in existence for generations, where skilled craftspeople with an *Old World* attention to detail employ traditional, centuries-old techniques to create superb woven goods.

PLEASE NOTE THAT THE COLORS SHOWN RIGHT WILL VARY DEPENDING ON YOUR INDIVIDUAL COMPUTER SCREEN SETTINGS.



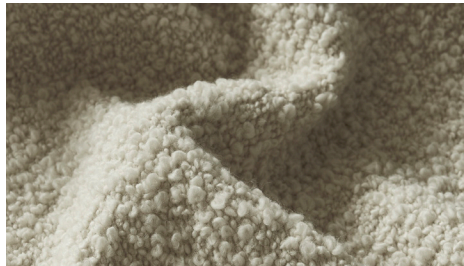
MATERIAL NAME
ALPACA BOUCLE

CODE
730015-01

COLOR
CHANTILLY

COMPOSITION
36% ALPACA, 35% WOOL,
29% COTTON

MATERIAL WIDTH
52IN



MATERIAL NAME
ALPACA BOUCLE

CODE
730015-02

COLOR
YEARLING

COMPOSITION
36% ALPACA, 35% WOOL,
29% COTTON

MATERIAL WIDTH
52IN



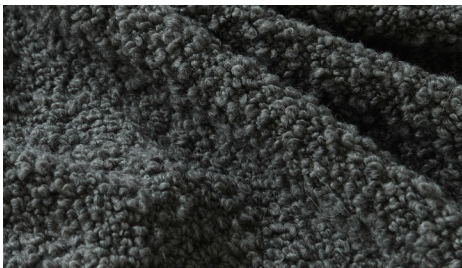
MATERIAL NAME
WOOLLY

CODE
730008-02

COLOR
FLEECE

COMPOSITION
51% WOOL, 35% LINEN,
14% COTTON

MATERIAL WIDTH
53IN



MATERIAL NAME
ALPACA BOUCLE

CODE
730015-05

COLOR
PEPPER

COMPOSITION
36% ALPACA, 35% WOOL,
29% COTTON

MATERIAL WIDTH
52IN



MATERIAL NAME
ALPACA BOUCLE

CODE
730015-03

COLOR
CHESTNUT

COMPOSITION
36% ALPACA, 35% WOOL,
29% COTTON

MATERIAL WIDTH
52IN

FIFTY-THREE HOWARD STREET
NEW YORK, NY 10013



RWGUILD.COM | @RWGUILD
212-852-9099