

ROMAN AND WILLIAMS

**GUILD**

NEW YORK

*STEPHEN ALESCH AND ROBIN STANDEFER PRESENT*

# LILY TABLE



FIFTY-THREE HOWARD STREET  
NEW YORK, NY 10013



RWGUILD.COM | @RWGUILD  
212-852-9099



AVAILABLE AS TWO SCULPTURAL TABLES—20" AND 23" HIGH—THAT NEST SEAMLESSLY OR STAND ALONE.



CAST BRONZE, PORTORO MARBLE STONE TOP

Lily Tables are the first nesting furniture for Roman and Williams Guild Original Designs by Stephen Alesch and Robin Standefer. Two sculptural tables, at 20" and 23" high, nest seamlessly or stand independently as accents. Each bronze base is hand-cast using the ancient lost-wax method, giving every piece unique variation.

Tops are available in a range of stones—including Black St. Laurent, Nero Zebrino, White Macaubas Quartzite Honed, Portoro Marble, Giallo Sienna, or Arabescato Corchia—each adding depth and character to the tables.

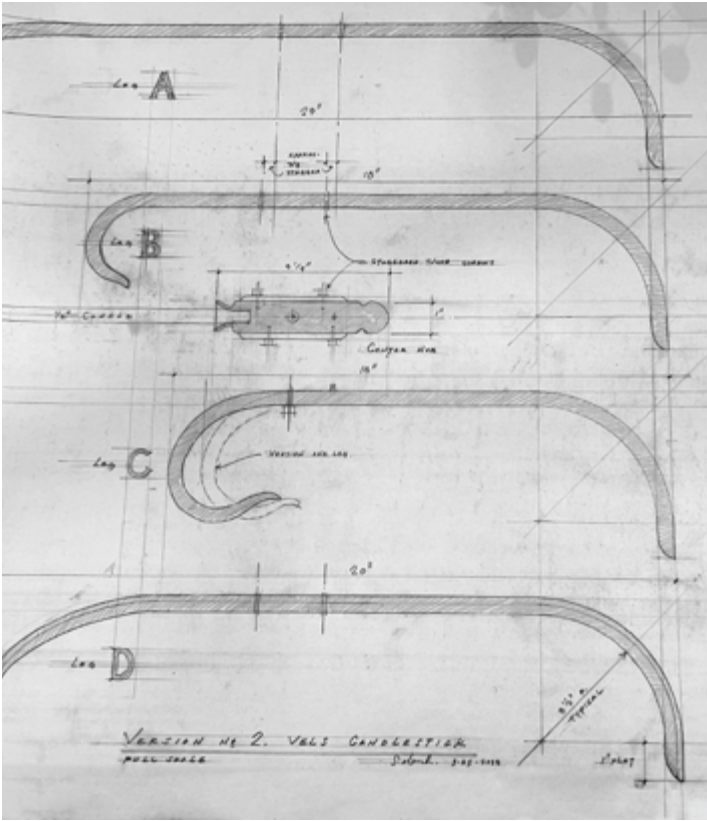
Inspired by the form of the lily flower, the curved bronze legs suggest botanical movement and natural geometry. Versatile in use, the Lily Tables function as accent cocktail tables, bedside stands, or tiered display surfaces for books, vases, and collected objects.

FROM \$4,700

FIFTY-THREE HOWARD STREET  
NEW YORK, NY 10013



RWGUILD.COM | @RWGUILD  
212-852-9099



ORIGINAL DRAWINGS BY STEPHEN ALESCH



THE LILY CANDLESTICK IN CAST BRONZE

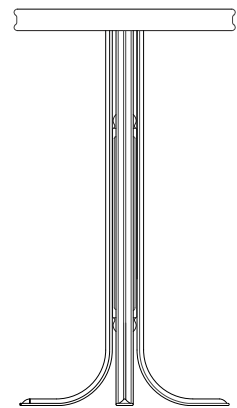
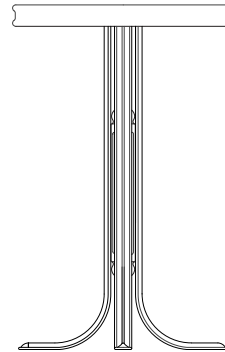
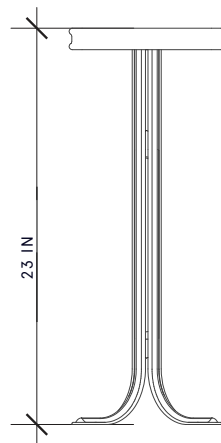
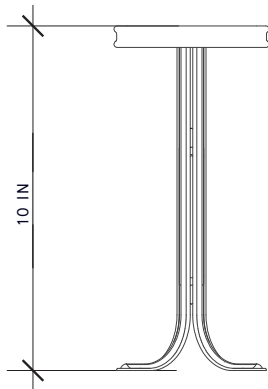
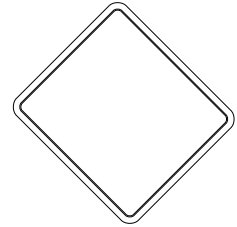
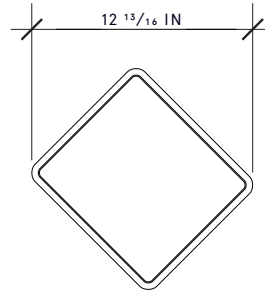
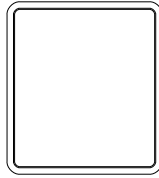
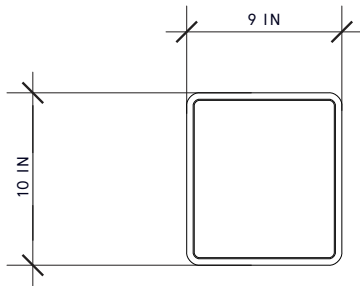


CAST BRONZE, PORTORO MARBLE STONE TOP



CURVED BRONZE LEGS THAT ECHO BOTANICAL MOVEMENT





#### METAL FINISHES

CAST BRONZE

#### STONE TOP OPTIONS

PORTORO MARBLE  
BLACK ST. LAURENT MARBLE  
WHITE MACAUBAS QUARTZITE  
ARABESCATO CORCHIA  
MARBLE  
CALACATTA VIOLA MARBLE  
GIALLO SIENNA MARBLE  
NERO ZEBRINO MARBLE

#### DIMENSIONS

23"H X 10"L X 9"W  
20"H X 10"L X 9"W

ROMAN AND WILLIAMS

# GUILD

NEW YORK

ABOUT THE CREATORS

## STEPHEN ALESCH & ROBIN STANDEFER



*Robin Standefer and Stephen Alesch are the founders and principals of Roman and Williams and RW Guild. They present a radical vision for the home and a way of living that is not just beautiful and luxurious; it is deeply connected to nature, culture, and community. Following in a tradition of makers who create forms, shapes, and ideas, every piece has a story informed by their years of work and study in the fields of architecture, film, fine art, and interior design. Each of Robin and Stephen's Original Designs is the product of deep research, exhaustive sourcing, and many stages of hand-drafting, constructing, and prototyping—quality is stubbornly uncompromising. Throughout all stages of production, each piece champions natural materials, and the master craftsmen and artisans who have dedicated their lives to proven, ancient techniques and methods. RW Guild Original Designs are about endurance and can be maintained and repaired, every piece a modern heirloom made to last for generations.*

FIFTY-THREE HOWARD STREET  
NEW YORK, NY 10013



RWGUILD.COM | @RWGUILD  
212-852-9099