

80 SERIES ET-3 TOUCH SCREEN ASSEMBLY INSTRUCTIONS

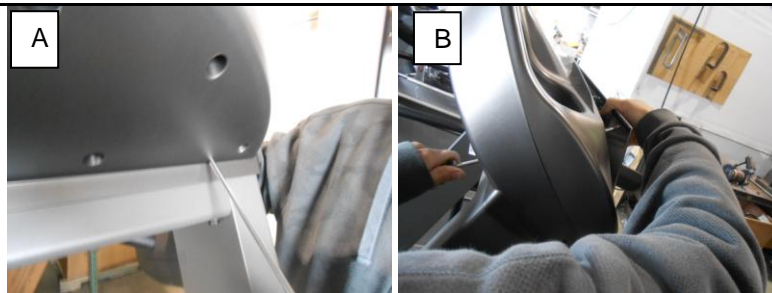
INTRODUCTION

This document is to be used for installing electronic equipment on units manufactured February 2014.

TOOLS REQUIRED

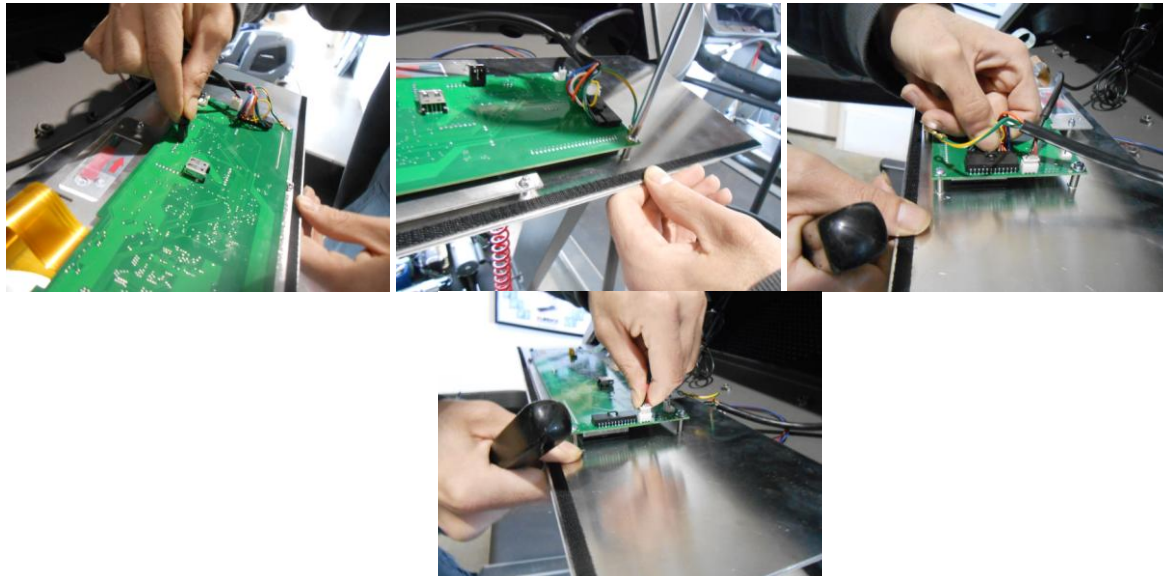
- Phillips head screw driver
- Dowell (approximately 16 inches long)

ACTIVITY/PROCESS



STEP#1: Insert a long push rod or Phillips head screw driver (approximately 16" long) thru the access hole on bottom back of HTEC assembly. (FIGURE A). Grab the panel and pull it away from the HTEC assembly once the push rod pops the panel off the Velcro seal from the top (FIGURE B).

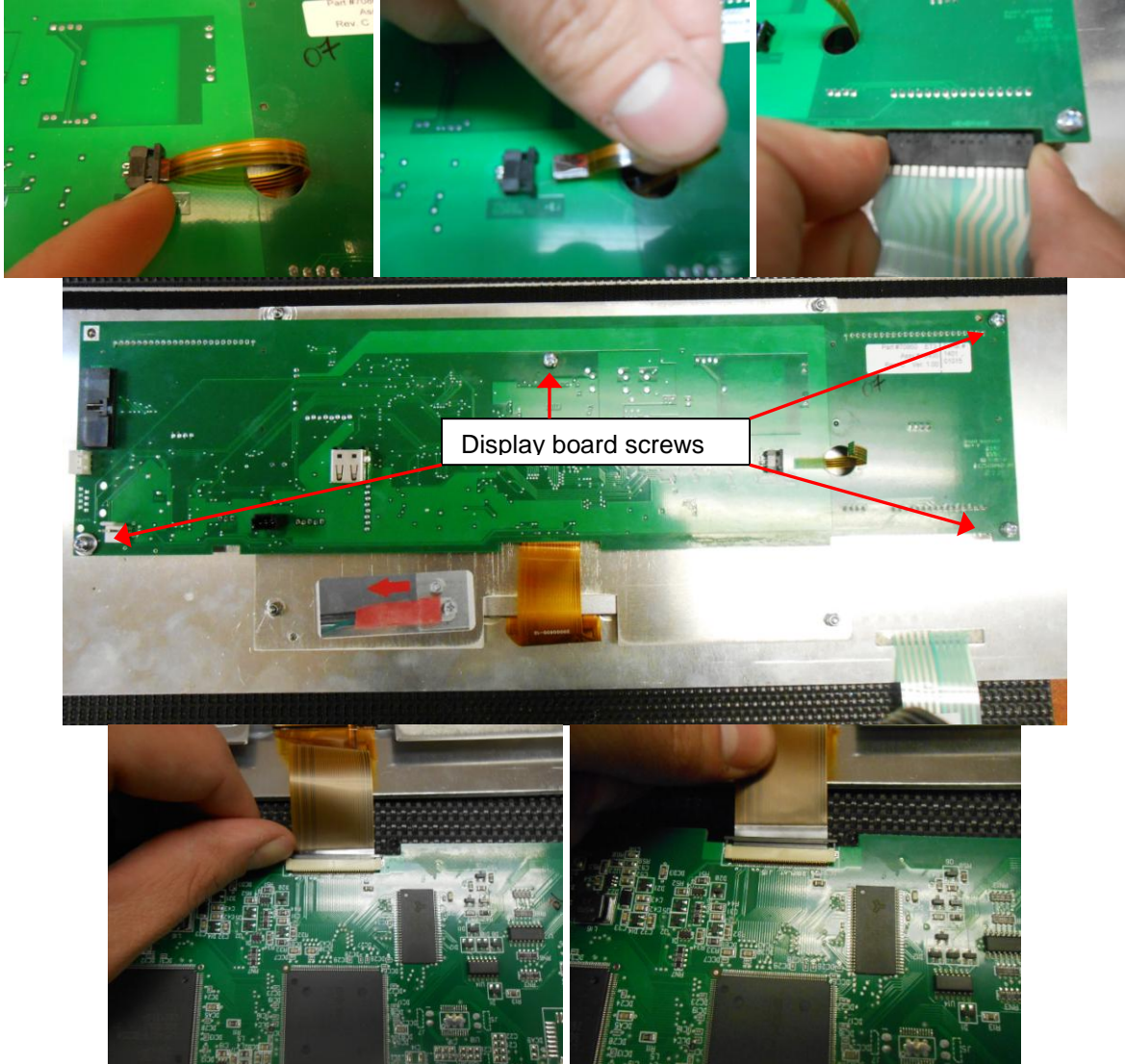
STEP 2: REMOVE THE DISPLAY BOARD FROM THE HTEC ASSEMBLY



- Disconnect the HAMLIN sensor from the upper board by depressing the clips and pulling the connection out. (FIGURE A)
- Remove the display board screw for the grounding wire. (FIGURE B)
- Depress the clip on the main harness Molex connector and pull it out of the upper board connector. (FIGURE C)
- Disconnect the POD power harness located next to the black Molex connector on the upper board. (FIGURE D)

80 SERIES ET-3 TOUCH SCREEN ASSEMBLY INSTRUCTIONS

STEP 3: DISCONNECT THE UPPER BOARD OFF THE ET3 TOUCH SCREEN ASSEMBLY.



- A) Use the tip of your fingernail to unlock the locking clip for the LCD power harness. (FIGURE A)
- B) Disconnect the LCD power harness cable from the upper board. (FIGURE B)
- C) Grab the membrane ribbon cable at each end and disconnect it from the upper board. (FIGURE C)
- D) Remove the 4 Phillips head screws holding the upper board to the LCD back plate. (FIGURE D)
- E) Pull the upper board away and then use the tip of your fingernail to unlock the clip for the LCD data ribbon. (FIGURE E)
- F) Pull the LCD data ribbon cable connection out of the upper board.

80 SERIES ET-3 TOUCH SCREEN ASSEMBLY INSTRUCTIONS

NOTICE: THE ET3 MEMBRANE ASSEMBLY WILL COME WITH THE LCD SCREEN SILICONED TO THE MEMBRANE ALONG WITH THE BRACKET ATTACHED (SEE PICTURE BELOW)



STEP 4: ASSEMBLY ET-3 UPPER BOARD TO MEMBRANE PANEL ASSEMBLY

