

REMOTE CONSOLE MEMBRANE SWITCH / REPLACEMENT

Recommended Tools:

- 1.) Remote Console Membrane Switch
- 2.) Flat Head Jewelers Screwdriver
- 3.) T-Handle Allen Head Driver (Size M4)
- 4.) Phillips Head Screwdriver (Size #2)
- 5.) Phillips Head Screwdriver (Size #1)

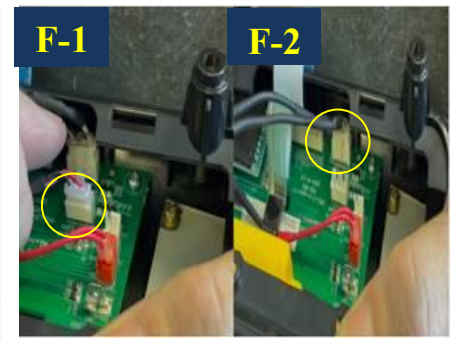
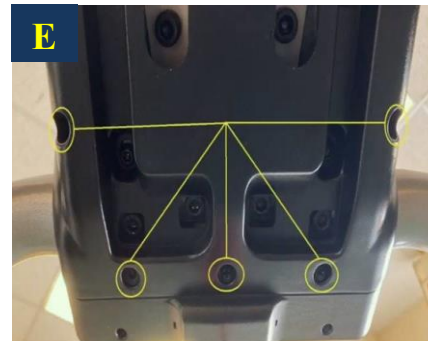


STEP 1



- A. Remove the accessory tray by inserting the Flat Head Jewelers Screwdriver underneath the locking tabs, under the accessory tray. Carefully push downwards on the screwdriver to unlock the tabs to access the remote console wiring underneath the accessory tray.
- B. Remove the accessory tray and set aside. Locate the primary ribbon harness (White) cable and wireless heart rate cable (Optional).
- C. Carefully remove the White ribbon cable, exposing the butt end connector located within the upright tower. Disconnect the butt end connector by pressing down on the locking tab to disconnect the white ribbon cable.

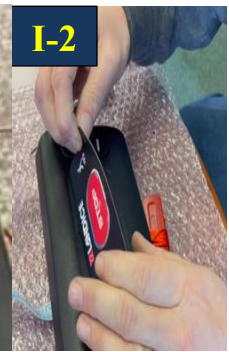
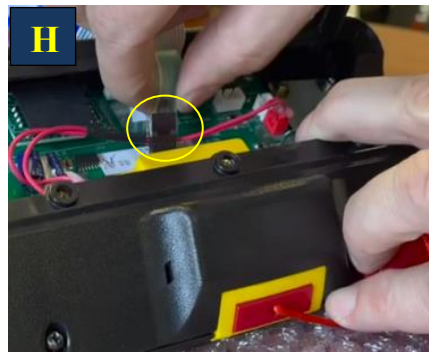
STEP 2



- D. Using the Size #2 Phillips Head Screwdriver, locate and remove the (5) Phillips head screws from underneath the Remote Console mounting bracket as shown in (Illustration E).
- F. Once all (5) of the mounting screws are removed, carefully remove the Remote Console from the crossbar assembly. Disconnect the wireless contact heart rate cable and pulse receiver cable (Optional) from the Remote Console circuit board.



STEP 3



- G. Once cables are disconnected, remove the Remote Console and place it in a clean, safe, protected work environment to not get damaged or scratched.
- H. Flip the Remote Console over and disconnect the membrane ribbon cable that is plugged into the back of the control board.
- I. Using the Flat Tip Jewelers Screwdriver, insert the tip of the screwdriver into the masking of the membrane overlay and peel off the (Stop) membrane panel so it could be completely removed as shown in (Illustration I-2).

STEP 4



- J. If any glue/adhesive is remaining where the console membrane overlay was removed, use a clean rag and denatured alcohol to carefully clean the surface of the console to remove any leftover residue.
- K. Remove the protective adhesive layer off the back of the replacement console membrane overlay.
- L. Insert the ribbon cable through the front of the Remote Console. Make sure to check the alignment of the membrane with the Remote Console.

NOTE: Reverse the above steps to put it back together.