

CERTIFICATE OF ANALYSIS

ISO/IEC 17025:2017 ACCREDITATION #103104



Order #: 85543
 Order Name: Medterra 1000mg
 Broad Spectrum Unflavored
 Tincture 53206
 Batch#: 53206
 Received: 10/05/2021
 Completed: 10/11/2021

Medterra CBD, LLC
 9801 Research Drive
 Irvine CA, 92618
 (800) 971-1288
 support@medterracbd.com



Sample



| | |
|--|---|
| <p>N/D D9-THC</p> | <p>3.416% Total CBD</p> |
| <p>1,075.3 mg Cannabinoids per unit</p> | <p>968.3 mg CBD per unit</p> |

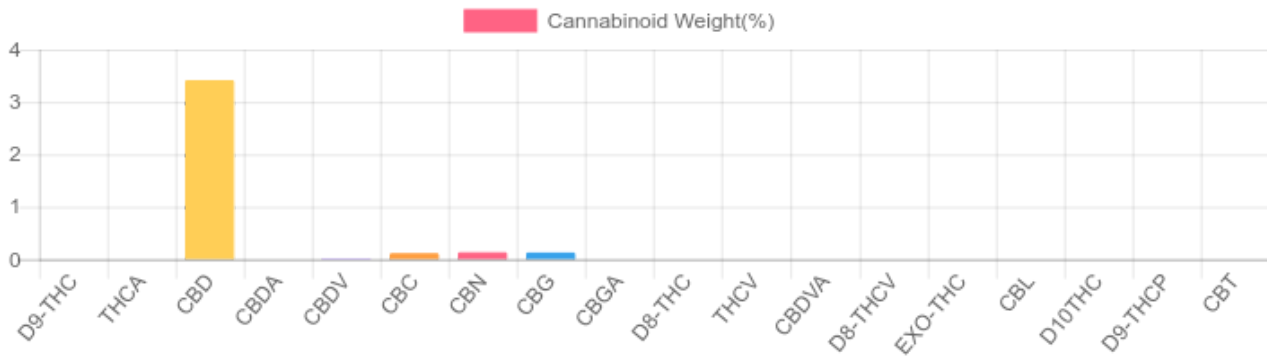
1 unit = 30 ml per unit x density (0.945) x Cannabinoid concentration

Cannabinoids Test

HPLC-DAD
 GSL SOP 400

UPLOADED: 10/07/2021 10:25:47

| Cannabinoids | LOQ(mg/g) | weight(%) | mg/g | mg/unit |
|--------------------|-----------|---------------|---------------|----------------|
| D9-THC | 0.1954 | N/D | N/D | N/D |
| THCA | 0.1954 | N/D | N/D | N/D |
| CBD | 0.1954 | 3.416% | 34.156 | 968.323 |
| CBDA | 0.1954 | N/D | N/D | N/D |
| CBDV | 0.1954 | N/D | N/D | N/D |
| CBC | 0.1954 | 0.114% | 1.141 | 32.347 |
| CBN | 0.1954 | 0.134% | 1.339 | 37.961 |
| CBG | 0.1954 | 0.129% | 1.293 | 36.657 |
| CBGA | 0.1954 | N/D | N/D | N/D |
| D8-THC | 0.1954 | N/D | N/D | N/D |
| THCV | 0.1954 | N/D | N/D | N/D |
| CBDVA | 0.1954 | N/D | N/D | N/D |
| D8-THCV | 0.1954 | N/D | N/D | N/D |
| EXO-THC | 0.1954 | N/D | N/D | N/D |
| CBL | 0.1954 | N/D | N/D | N/D |
| D10THC | 0.1954 | N/D | N/D | N/D |
| D9-THCP | 0.1954 | N/D | N/D | N/D |
| CBT | 0.1954 | N/D | N/D | N/D |
| TOTAL D9-THC | | N/D | N/D | N/D |
| TOTAL CBD* | | 3.416% | 34.156 | 968.3 |
| TOTAL CANNABINOIDS | | 3.793% | 37.929 | 1,075.3 |



*Total CBD = CBD + CBDA x 0.877
 N/D - Not Detected, B/LOQ - Below Limit of Quantification

Ben Witten, MS, MT., Lab Director

Green Scientific Labs
 info@greenscientificlabs.com
 1-833 TEST CBD



Green Scientific Labs uses its best efforts to deliver high quality results and to verify that the data contained therein are based on sound scientific judgment and levels listed are guidelines only and all data was reported based on standard laboratory procedures and deviations. However Green Scientific Labs makes no warranties or claims to that effect and further shall not be liable for any damage or misrepresentation that may result from the use or misuse of the data contained herein in any way. Further, Green Scientific Labs makes no claims regarding representations of the analyzed sample to the larger batch from which it was taken. Data and information in this report are intended solely for the individual(s) for whom samples were submitted and as part of our strict confidentiality policy, Green Scientific Labs can only discuss results with the original client of record.

CERTIFICATE OF ANALYSIS

ISO/IEC 17025:2017 ACCREDITATION #103104



Order #: 85543
 Order Name: Medterra 1000mg
 Broad Spectrum Unflavored
 Tincture 53206
 Batch#: 53206
 Received: 10/05/2021
 Completed: 10/11/2021

Medterra CBD, LLC
 9801 Research Drive
 Irvine CA, 92618
 (800) 971-1288
 support@medterracbd.com



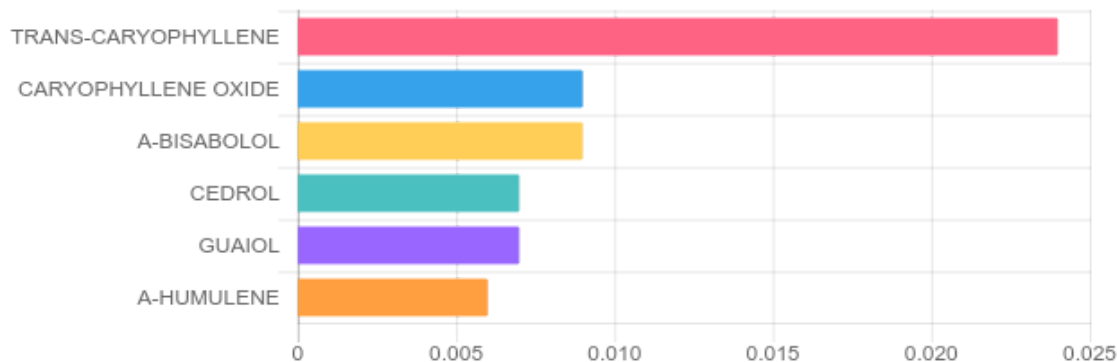
TERPENES: TOTAL (0.062%)

GSL SOP 404
 Uploaded: 10/07/2021 11:31:52

GC-FID

| Terpene | Results (%) | LOQ (%) | LOD (%) | Terpene | Results (%) | LOQ (%) | LOD (%) |
|---------------------------|-------------|---------|---------|----------------------------|-------------|---------|---------|
| 3-CARENE | N/D | 0.003% | 0.001% | GERANIOL | N/D | 0.003% | 0.001% |
| A-BISABOLOL | 0.009% | 0.003% | 0.001% | GERANYL ACETATE | N/D | 0.003% | 0.001% |
| A-CEDRENE | N/D | 0.003% | 0.001% | GUAIOL | 0.007% | 0.003% | 0.001% |
| A-HUMULENE | 0.006% | 0.003% | 0.001% | HEXAHYDROTHYMOL | N/D | 0.003% | 0.001% |
| A-PINENE | N/D | 0.003% | 0.001% | ISOBORNEOL | N/D | 0.003% | 0.001% |
| A-TERPINENE | N/D | 0.003% | 0.001% | ISOPULEGOL | N/D | 0.003% | 0.001% |
| B-MYRCENE | N/D | 0.003% | 0.001% | LIMONENE | N/D | 0.003% | 0.001% |
| B-PINENE | N/D | 0.003% | 0.001% | LINALOOL | N/D | 0.003% | 0.001% |
| BORNEOL (MIX OF ISOMERS) | N/D | 0.003% | 0.001% | NEROL | N/D | 0.003% | 0.001% |
| CAMPHENE | N/D | 0.003% | 0.001% | P-MENTHA-1, 5-DIENE | N/D | 0.003% | 0.001% |
| CAMPHOR (MIX OF ISOMERS) | N/D | 0.003% | 0.001% | PULEGONE (+) | N/D | 0.003% | 0.001% |
| CARYOPHYLLENE OXIDE | 0.009% | 0.003% | 0.001% | SABINENE HYDRATE | N/D | 0.003% | 0.001% |
| CEDROL | 0.007% | 0.003% | 0.001% | TERPINEOL (MIX OF ISOMERS) | N/D | 0.003% | 0.001% |
| CIS-NEROLIDOL | N/D | 0.003% | 0.001% | TERPINOLENE | N/D | 0.003% | 0.001% |
| CIS-OCIMENE | N/D | 0.003% | 0.001% | TRANS-CARYOPHYLLENE | 0.024% | 0.003% | 0.001% |
| ENDO-FENCHYL ALCOHOL | N/D | 0.003% | 0.001% | TRANS-NEROLIDOL | N/D | 0.003% | 0.001% |
| EUCALYPTOL | N/D | 0.003% | 0.001% | TRANS-OCIMENE | N/D | 0.003% | 0.001% |
| FENCHONE (MIX OF ISOMERS) | N/D | 0.003% | 0.001% | VALENCENE | N/D | 0.003% | 0.001% |
| GAMMA-TERPINENE | N/D | 0.003% | 0.001% | | | | |

Top Terpenes Results:



Ben Witten, MS, MT., Lab Director

Green Scientific Labs
 info@greenscientificlabs.com
 1-833 TEST CBD



Green Scientific Labs uses its best efforts to deliver high quality results and to verify that the data contained therein are based on sound scientific judgment and levels listed are guidelines only and all data was reported based on standard laboratory procedures and deviations. However Green Scientific Labs makes no warranties or claims to that effect and further shall not be liable for any damage or misrepresentation that may result from the use or misuse of the data contained herein in any way. Further, Green Scientific Labs makes no claims regarding representations of the analyzed sample to the larger batch from which it was taken. Data and information in this report are intended solely for the individual(s) for whom samples were submitted and as part of our strict confidentiality policy, Green Scientific Labs can only discuss results with the original client of record.

CERTIFICATE OF ANALYSIS

ISO/IEC 17025:2017 ACCREDITATION #103104



Order #: 85543
 Order Name: Medterra 1000mg
 Broad Spectrum Unflavored
 Tincture 53206
 Batch#: 53206
 Received: 10/05/2021
 Completed: 10/11/2021

Medterra CBD, LLC
 9801 Research Drive
 Irvine CA, 92618
 (800) 971-1288
 support@medterracbd.com



PESTICIDE ANALYSIS:

GSL SOP 401

PREPARED: 10/06/2021 19:15:35

UPLOADED: 10/07/2021 09:59:37

GC-MS/MS

| Pesticide | Action Level (ppm) | Results (ppm) | LOQ (ppm) | LOD (ppm) |
|--------------|--------------------|---------------|-----------|-----------|
| CAPTAN | 0.700 | N/D | 0.100 | 0.010 |
| CHLORDANE | 0.100 | N/D | 0.100 | 0.010 |
| CHLORFENAPYR | 0.100 | N/D | 0.100 | 0.010 |
| COUMAPHOS | 0.100 | N/D | 0.100 | 0.010 |

| Pesticide | Action Level (ppm) | Results (ppm) | LOQ (ppm) | LOD (ppm) |
|-------------------------|--------------------|---------------|-----------|-----------|
| CYFLUTHRIN | 2.000 | N/D | 0.100 | 0.010 |
| CYPERMETHRIN | 1.000 | N/D | 0.100 | 0.010 |
| PARATHION-METHYL | 0.100 | N/D | 0.100 | 0.010 |
| PENTACHLORONITROBENZENE | 0.100 | N/D | 0.100 | 0.010 |

LC-MS/MS

| Pesticide | Action Level (ppm) | Results (ppm) | LOQ (ppm) | LOD (ppm) |
|---------------------|--------------------|---------------|-----------|-----------|
| ABAMECTIN B1A | 0.100 | N/D | 0.005 | 0.005 |
| ACEPHATE | 0.100 | N/D | 0.005 | 0.001 |
| ACEQUINOCYL | 0.100 | N/D | 0.005 | 0.005 |
| ACETAMIPRID | 0.100 | N/D | 0.005 | 0.005 |
| ALDICARB | 0.100 | N/D | 0.005 | 0.005 |
| AZOXYSTROBIN | 0.100 | N/D | 0.005 | 0.001 |
| BIFENAZATE | 0.100 | N/D | 0.005 | 0.001 |
| BIFENTHRIN | 3.000 | N/D | 0.005 | 0.005 |
| BOSCALID | 0.100 | N/D | 0.005 | 0.005 |
| CARBARYL | 0.500 | N/D | 0.005 | 0.001 |
| CARBOFURAN | 0.100 | N/D | 0.005 | 0.001 |
| CHLORANTRANILIPROLE | 10.000 | N/D | 0.005 | 0.005 |
| CHLORPYRIFOS | 0.100 | N/D | 0.005 | 0.005 |
| CLOFENTEZINE | 0.100 | N/D | 0.005 | 0.005 |
| DAMINOZIDE | 0.100 | N/D | 0.005 | 0.001 |
| DIAZINON | 0.100 | N/D | 0.005 | 0.005 |
| DICHLORVOS | 0.100 | N/D | 0.005 | 0.001 |
| DIMETHOATE | 0.100 | N/D | 0.005 | 0.001 |
| DIMETHOMORPH | 2.000 | N/D | 0.005 | 0.001 |
| ETHOPROPHOS | 0.100 | N/D | 0.005 | 0.001 |
| ETOFENPROX | 0.100 | N/D | 0.005 | 0.005 |
| ETOXAZOLE | 0.100 | N/D | 0.050 | 0.005 |
| FENHEXAMID | 0.100 | N/D | 0.005 | 0.001 |
| FENOXYCARB | 0.100 | N/D | 0.005 | 0.005 |
| FENPYROXIMATE | 0.100 | N/D | 0.005 | 0.005 |
| FIPRONIL | 0.100 | N/D | 0.005 | 0.005 |
| FLONICAMID | 0.100 | N/D | 0.025 | 0.005 |
| FLUDIOXONIL | 0.100 | N/D | 0.005 | 0.005 |
| HEXYTHIAZOX | 0.100 | N/D | 0.005 | 0.005 |
| IMAZALIL | 0.100 | N/D | 0.005 | 0.001 |

| Pesticide | Action Level (ppm) | Results (ppm) | LOQ (ppm) | LOD (ppm) |
|-----------------|--------------------|---------------|-----------|-----------|
| IMIDACLOPRID | 5.000 | N/D | 0.005 | 0.001 |
| KRESOXIM-METHYL | 0.100 | N/D | 0.005 | 0.005 |
| MALATHION | 0.500 | N/D | 0.005 | 0.001 |
| METALAXYL | 2.000 | N/D | 0.005 | 0.001 |
| METHIOCARB | 0.100 | N/D | 0.005 | 0.001 |
| METHOMYL | 1.000 | N/D | 0.005 | 0.001 |
| MEVINPHOS | 0.100 | N/D | 0.005 | 0.001 |
| MYCLOBUTANIL | 0.100 | N/D | 0.005 | 0.005 |
| NALED | 0.100 | N/D | 0.005 | 0.001 |
| OXAMYL | 0.500 | N/D | 0.005 | 0.001 |
| PACLOBUTRAZOL | 0.100 | N/D | 0.005 | 0.005 |
| PERMETHRINS | 0.500 | N/D | 0.005 | 0.005 |
| PHOSMET | 0.100 | N/D | 0.005 | 0.001 |
| PIPERONYL | 3.000 | N/D | 0.005 | 0.005 |
| BUTOXIDE | | | | |
| PRALLETHRIN | 0.100 | N/D | 0.005 | 0.005 |
| PROPICONAZOLE | 0.100 | N/D | 0.010 | 0.005 |
| PROPOXUR | 0.100 | N/D | 0.005 | 0.001 |
| PYRETHRINS | 0.500 | N/D | 0.005 | 0.001 |
| PYRIDABEN | 0.100 | N/D | 0.005 | 0.005 |
| SPINETORAM | 0.100 | N/D | 0.005 | 0.005 |
| SPINOSAD | 0.100 | N/D | 0.005 | 0.005 |
| SPIROMESIFEN | 0.100 | N/D | 0.005 | 0.001 |
| SPIROTETRAMAT | 0.100 | N/D | 0.005 | 0.005 |
| SPIROXAMINE | 0.100 | N/D | 0.005 | 0.001 |
| TEBUCONAZOLE | 0.100 | N/D | 0.005 | 0.001 |
| THIACLOPRID | 0.100 | N/D | 0.005 | 0.001 |
| THIAMETHOXAM | 5.000 | N/D | 0.005 | 0.001 |
| TRIFLOXYSTROBIN | 0.100 | N/D | 0.005 | 0.005 |

N/D = Not Detected, A/LOQ = Above LOQ Level, B/LOQ = Below LOQ Level, B/LOD = Below LOD Level

Ben Witten, MS, MT., Lab Director

Green Scientific Labs
 info@greenscientificlabs.com
 1-833 TEST CBD



Green Scientific Labs uses its best efforts to deliver high quality results and to verify that the data contained therein are based on sound scientific judgment and levels listed are guidelines only and all data was reported based on standard laboratory procedures and deviations. However Green Scientific Labs makes no warranties or claims to that effect and further shall not be liable for any damage or misrepresentation that may result from the use or misuse of the data contained herein in any way. Further, Green Scientific Labs makes no claims regarding representations of the analyzed sample to the larger batch from which it was taken. Data and information in this report are intended solely for the individual(s) for whom samples were submitted and as part of our strict confidentiality policy, Green Scientific Labs can only discuss results with the original client of record.

CERTIFICATE OF ANALYSIS

ISO/IEC 17025:2017 ACCREDITATION #103104



Order #: 85543
Order Name: Medterra 1000mg
 Broad Spectrum Unflavored
 Tincture 53206
Batch#: 53206
Received: 10/05/2021
Completed: 10/11/2021

Medterra CBD, LLC
 9801 Research Drive
 Irvine CA, 92618
 (800) 971-1288
 support@medterracbd.com



RESIDUAL SOLVENTS:

HS-GC-MS

GSL SOP 405

Uploaded: 10/07/2021 10:42:29

| Residual Solvent | Action Level (ppm) | Results (ppm) | LOQ (ppm) | LOD (ppm) |
|---------------------|--------------------|---------------|-----------|-----------|
| 1,1-DICHLOROETHENE | 8 | N/D | 0.63 | 0.6 |
| 1,2- DICHLOROETHANE | 2 | N/D | 0.12 | 0.012 |
| 1,2-DICHLOROETHENE | 5 | N/D | 0.73 | 0.09 |
| ACETONE | 5,000 | N/D | 140 | 9 |
| ACETONITRILE | 410 | N/D | 25 | 0.72 |
| BENZENE | 1 | N/D | 1 | 0.6 |
| BUTANE | 5,000 | N/D | 50 | 48 |
| CHLOROFORM | 1 | N/D | 1 | 0.5 |
| ETHANOL | 5,000 | N/D | 140 | 12 |
| ETHYL ACETATE | 5,000 | N/D | 140 | 2.4 |
| ETHYL ETHER | 5,000 | N/D | 140 | 6 |
| ETHYLENE OXIDE | 1 | N/D | 2 | 0.6 |
| ISOPROPYL ALCOHOL | 5,000 | N/D | 140 | 3 |
| METHANOL | 3,000 | N/D | 100 | 6 |
| METHYLENE CHLORIDE | 125 | N/D | 1.5 | 1.5 |
| N-HEPTANE | 5,000 | N/D | 140 | 6 |
| N-HEXANE | 290 | N/D | 18 | 0.06 |
| PENTANE | 5,000 | N/D | 140 | 9 |
| PROPANE | 5,000 | N/D | 30 | 30 |
| TOLUENE | 890 | N/D | 53 | 0.9 |
| TRICHLOROETHENE | 1 | N/D | 1 | 0.3 |
| XYLENES | 150 | N/D | 130 | 1.8 |

Ben Witten, MS, MT., Lab Director

Green Scientific Labs
 info@greenscientificlabs.com
 1-833 TEST CBD



Green Scientific Labs uses its best efforts to deliver high quality results and to verify that the data contained therein are based on sound scientific judgment and levels listed are guidelines only and all data was reported based on standard laboratory procedures and deviations. However Green Scientific Labs makes no warranties or claims to that effect and further shall not be liable for any damage or misrepresentation that may result from the use or misuse of the data contained herein in any way. Further, Green Scientific Labs makes no claims regarding representations of the analyzed sample to the larger batch from which it was taken. Data and information in this report are intended solely for the individual(s) for whom samples were submitted and as part of our strict confidentiality policy, Green Scientific Labs can only discuss results with the original client of record.

CERTIFICATE OF ANALYSIS

ISO/IEC 17025:2017 ACCREDITATION #103104



Order #: 85543
 Order Name: Medterra 1000mg
 Broad Spectrum Unflavored
 Tincture 53206
 Batch#: 53206
 Received: 10/05/2021
 Completed: 10/11/2021

Medterra CBD, LLC
 9801 Research Drive
 Irvine CA, 92618
 (800) 971-1288
 support@medterracbd.com



Microbial Analysis:

Microbial Analysis GSL SOP 406

PCR - Agilent AriaMX

Uploaded: 10/08/2021 18:58:56

MICROBIAL ANALYSIS:

PCR - Agilent AriaMX

| Test | SOP | Test Method | Device Used | LOD | Allowable Criteria | Actual Result | Pass/Fail |
|--------------------------|--------|-------------|-------------|-----------|---------------------|---------------|-----------|
| SALMONELLA* | 406.01 | USP 61/62† | ARIAMX PCR | 1 CFU/G** | DETECT/NOT DETECTED | NOT DETECTED | PASS |
| STEC E. COLI* | 406.01 | USP 61/62† | ARIAMX PCR | 1 CFU/G** | DETECT/NOT DETECTED | NOT DETECTED | PASS |
| ASPERGILLUS FUMIGATUS*** | 406.01 | USP 61/62† | ARIAMX PCR | 1 CFU/G** | DETECT/NOT DETECTED | NOT DETECTED | PASS |
| ASPERGILLUS TERREUS*** | 406.01 | USP 61/62† | ARIAMX PCR | 1 CFU/G** | DETECT/NOT DETECTED | NOT DETECTED | PASS |
| ASPERGILLUS FLAVUS*** | 406.01 | USP 61/62† | ARIAMX PCR | 1 CFU/G** | DETECT/NOT DETECTED | NOT DETECTED | PASS |
| ASPERGILLUS NIGER*** | 406.01 | USP 61/62† | ARIAMX PCR | 1 CFU/G** | DETECT/NOT DETECTED | NOT DETECTED | PASS |

† USP 61 (enumeration of bacteria TAC, TYM, and ENT/Coliform), USP 62 (identifying specific species E.coli Aspergillus etc)

* STEC and Salmonella run as Multiplex

** CFU/g Calculation based on MIP/Extract matrix

*** Flavus = 2 Copies of DNA / Fumigatis = 2 Copies of DNA Niger = 20 Copies of DNA / Terrus = 10 copies of DNA

Ben Witten, MS, MT., Lab Director

Green Scientific Labs
 info@greenscientificlabs.com
 1-833 TEST CBD



Green Scientific Labs uses its best efforts to deliver high quality results and to verify that the data contained therein are based on sound scientific judgment and levels listed are guidelines only and all data was reported based on standard laboratory procedures and deviations. However Green Scientific Labs makes no warranties or claims to that effect and further shall not be liable for any damage or misrepresentation that may result from the use or misuse of the data contained herein in any way. Further, Green Scientific Labs makes no claims regarding representations of the analyzed sample to the larger batch from which it was taken. Data and information in this report are intended solely for the individual(s) for whom samples were submitted and as part of our strict confidentiality policy, Green Scientific Labs can only discuss results with the original client of record.

CERTIFICATE OF ANALYSIS

ISO/IEC 17025:2017 ACCREDITATION #103104



Order #: 85543
Order Name: Medterra 1000mg
Broad Spectrum Unflavored
Tincture 53206
Batch#: 53206
Received: 10/05/2021
Completed: 10/11/2021

Medterra CBD, LLC
9801 Research Drive
Irvine CA, 92618
(800) 971-1288
support@medterracbd.com



Mycotoxin Analysis:

LC-MS/MS
GSL SOP 401

Uploaded: 10/07/2021 09:53:48

| Analyte | Action Lvl (ppb) | Results (ppb) |
|--------------|------------------|---------------|
| AFLATOXIN B1 | 20 | N/D |
| AFLATOXIN B2 | 20 | N/D |
| AFLATOXIN G1 | 20 | N/D |
| AFLATOXIN G2 | 20 | N/D |
| OCHRATOXIN A | 20 | N/D |

LOQ is 1ppb, LOD is 1ppb

Heavy Metals Analysis:

ICP-MS
GSL SOP 403

Uploaded: 10/07/2021 11:51:56

| Metal | Action Level (ppb) | Result (ppb) |
|--------------|--------------------|--------------|
| ARSENIC (AS) | 2,000 | B/LOQ |
| CADMIUM (CD) | 2,000 | N/D |
| MERCURY (HG) | 1,000 | N/D |
| LEAD (PB) | 5,000 | N/D |

Lower Limit of Quantitation (LOQ) is 75 ppb, Limit of Detection (LOD) is 3 ppb

Ben Witten, MS, MT., Lab Director

Green Scientific Labs
info@greenscientificlabs.com
1-833 TEST CBD



Green Scientific Labs uses its best efforts to deliver high quality results and to verify that the data contained therein are based on sound scientific judgment and levels listed are guidelines only and all data was reported based on standard laboratory procedures and deviations. However Green Scientific Labs makes no warranties or claims to that effect and further shall not be liable for any damage or misrepresentation that may result from the use or misuse of the data contained herein in any way. Further, Green Scientific Labs makes no claims regarding representations of the analyzed sample to the larger batch from which it was taken. Data and information in this report are intended solely for the individual(s) for whom samples were submitted and as part of our strict confidentiality policy, Green Scientific Labs can only discuss results with the original client of record.

CERTIFICATE OF ANALYSIS

ISO/IEC 17025:2017 ACCREDITATION #103104



Order #: 85416
 Order Name: Medterra 2000mg
 Broad Spectrum Unflavored
 Tincture 30ml 210920
 Batch#: 210920
 Received: 10/04/2021
 Completed: 10/08/2021

Medterra CBD, LLC
 9801 Research Drive
 Irvine CA, 92618
 (800) 971-1288
 support@medterracbd.com



Sample



| | |
|--|-----------------------------------|
| N/D D9-THC | 7.348% Total CBD |
| 2,184.3 mg Cannabinoids per unit | 2,083.1 mg CBD per unit |

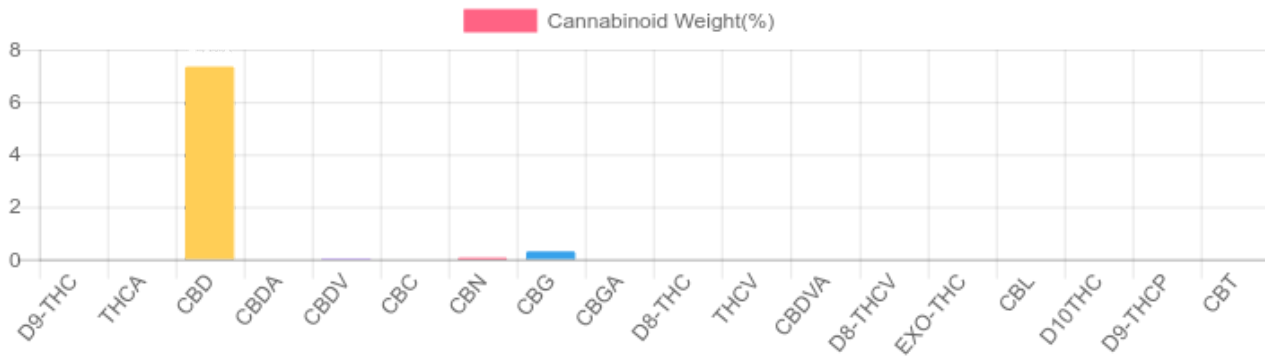
1 unit = 30 ml per unit x density (0.945) x Cannabinoid concentration

Cannabinoids Test

HPLC-DAD
 GSL SOP 400

UPLOADED: 10/05/2021 10:32:12

| Cannabinoids | LOQ(mg/g) | weight(%) | mg/g | mg/unit |
|--------------------|-----------|---------------|---------------|------------------|
| D9-THC | 0.1954 | N/D | N/D | N/D |
| THCA | 0.1954 | N/D | N/D | N/D |
| CBD | 0.1954 | 7.348% | 73.479 | 2,083.130 |
| CBDA | 0.1954 | N/D | N/D | N/D |
| CBDV | 0.1954 | B/LOQ | B/LOQ | B/LOQ |
| CBC | 0.1954 | N/D | N/D | N/D |
| CBN | 0.1954 | 0.062% | 0.619 | 17.549 |
| CBG | 0.1954 | 0.295% | 2.950 | 83.633 |
| CBGA | 0.1954 | N/D | N/D | N/D |
| D8-THC | 0.1954 | N/D | N/D | N/D |
| THCV | 0.1954 | N/D | N/D | N/D |
| CBDVA | 0.1954 | N/D | N/D | N/D |
| D8-THCV | 0.1954 | N/D | N/D | N/D |
| EXO-THC | 0.1954 | N/D | N/D | N/D |
| CBL | 0.1954 | N/D | N/D | N/D |
| D10THC | 0.1954 | N/D | N/D | N/D |
| D9-THCP | 0.1954 | N/D | N/D | N/D |
| CBT | 0.1954 | N/D | N/D | N/D |
| TOTAL D9-THC | | N/D | N/D | N/D |
| TOTAL CBD* | | 7.348% | 73.479 | 2,083.1 |
| TOTAL CANNABINOIDS | | 7.705% | 77.048 | 2,184.3 |



*Total CBD = CBD + CBDA x 0.877
 N/D - Not Detected, B/LOQ - Below Limit of Quantification

Ben Witten, MS, MT., Lab Director

Green Scientific Labs
 info@greenscientificlabs.com
 1-833 TEST CBD



Green Scientific Labs uses its best efforts to deliver high quality results and to verify that the data contained therein are based on sound scientific judgment and levels listed are guidelines only and all data was reported based on standard laboratory procedures and deviations. However Green Scientific Labs makes no warranties or claims to that effect and further shall not be liable for any damage or misrepresentation that may result from the use or misuse of the data contained herein in any way. Further, Green Scientific Labs makes no claims regarding representations of the analyzed sample to the larger batch from which it was taken. Data and information in this report are intended solely for the individual(s) for whom samples were submitted and as part of our strict confidentiality policy, Green Scientific Labs can only discuss results with the original client of record.

CERTIFICATE OF ANALYSIS

ISO/IEC 17025:2017 ACCREDITATION #103104



Order #: 85416
 Order Name: Medterra 2000mg
 Broad Spectrum Unflavored
 Tincture 30ml 210920
 Batch#: 210920
 Received: 10/04/2021
 Completed: 10/08/2021

Medterra CBD, LLC
 9801 Research Drive
 Irvine CA, 92618
 (800) 971-1288
 support@medterracbd.com



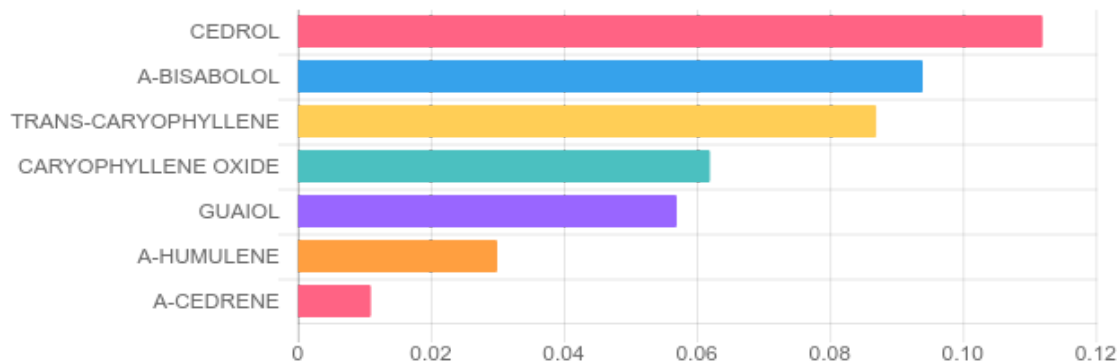
TERPENES: TOTAL (0.453%)

GSL SOP 404
 Uploaded: 10/05/2021 12:53:27

GC-FID

| Terpene | Results (%) | LOQ (%) | LOD (%) | Terpene | Results (%) | LOQ (%) | LOD (%) |
|---------------------------|-------------|---------|---------|----------------------------|-------------|---------|---------|
| 3-CARENE | N/D | 0.003% | 0.001% | GERANIOL | N/D | 0.003% | 0.001% |
| A-BISABOLOL | 0.094% | 0.003% | 0.001% | GERANYL ACETATE | N/D | 0.003% | 0.001% |
| A-CEDRENE | 0.011% | 0.003% | 0.001% | GUAJOL | 0.057% | 0.003% | 0.001% |
| A-HUMULENE | 0.030% | 0.003% | 0.001% | HEXAHYDROTHYMOL | N/D | 0.003% | 0.001% |
| A-PINENE | N/D | 0.003% | 0.001% | ISOBORNEOL | N/D | 0.003% | 0.001% |
| A-TERPINENE | N/D | 0.003% | 0.001% | ISOPULEGOL | N/D | 0.003% | 0.001% |
| B-MYRCENE | N/D | 0.003% | 0.001% | LIMONENE | N/D | 0.003% | 0.001% |
| B-PINENE | N/D | 0.003% | 0.001% | LINALOOL | N/D | 0.003% | 0.001% |
| BORNEOL (MIX OF ISOMERS) | N/D | 0.003% | 0.001% | NEROL | N/D | 0.003% | 0.001% |
| CAMPHENE | N/D | 0.003% | 0.001% | P-MENTHA-1, 5-DIENE | N/D | 0.003% | 0.001% |
| CAMPHOR (MIX OF ISOMERS) | N/D | 0.003% | 0.001% | PULEGONE (+) | N/D | 0.003% | 0.001% |
| CARYOPHYLLENE OXIDE | 0.062% | 0.003% | 0.001% | SABINENE HYDRATE | N/D | 0.003% | 0.001% |
| CEDROL | 0.112% | 0.003% | 0.001% | TERPINEOL (MIX OF ISOMERS) | N/D | 0.003% | 0.001% |
| CIS-NEROLIDOL | N/D | 0.003% | 0.001% | TERPINOLENE | N/D | 0.003% | 0.001% |
| CIS-OCIMENE | N/D | 0.003% | 0.001% | TRANS-CARYOPHYLLENE | 0.087% | 0.003% | 0.001% |
| ENDO-FENCHYL ALCOHOL | N/D | 0.003% | 0.001% | TRANS-NEROLIDOL | N/D | 0.003% | 0.001% |
| EUCALYPTOL | N/D | 0.003% | 0.001% | TRANS-OCIMENE | N/D | 0.003% | 0.001% |
| FENCHONE (MIX OF ISOMERS) | N/D | 0.003% | 0.001% | VALENCENE | N/D | 0.003% | 0.001% |
| GAMMA-TERPINENE | N/D | 0.003% | 0.001% | | | | |

Top Terpenes Results:



Ben Witten, MS, MT., Lab Director

Green Scientific Labs
 info@greenscientificlabs.com
 1-833 TEST CBD



Green Scientific Labs uses its best efforts to deliver high quality results and to verify that the data contained therein are based on sound scientific judgment and levels listed are guidelines only and all data was reported based on standard laboratory procedures and deviations. However Green Scientific Labs makes no warranties or claims to that effect and further shall not be liable for any damage or misrepresentation that may result from the use or misuse of the data contained herein in any way. Further, Green Scientific Labs makes no claims regarding representations of the analyzed sample to the larger batch from which it was taken. Data and information in this report are intended solely for the individual(s) for whom samples were submitted and as part of our strict confidentiality policy, Green Scientific Labs can only discuss results with the original client of record.

CERTIFICATE OF ANALYSIS

ISO/IEC 17025:2017 ACCREDITATION #103104



Order #: 85416
 Order Name: Medterra 2000mg
 Broad Spectrum Unflavored
 Tincture 30ml 210920
 Batch#: 210920
 Received: 10/04/2021
 Completed: 10/08/2021

Medterra CBD, LLC
 9801 Research Drive
 Irvine CA, 92618
 (800) 971-1288
 support@medterracbd.com



PESTICIDE ANALYSIS:

GSL SOP 401

PREPARED: 10/07/2021 15:22:45

UPLOADED: 10/08/2021 11:05:11

GC-MS/MS

| Pesticide | Action Level (ppm) | Results (ppm) | LOQ (ppm) | LOD (ppm) |
|--------------|--------------------|---------------|-----------|-----------|
| CAPTAN | 0.700 | N/D | 0.100 | 0.010 |
| CHLORDANE | 0.100 | N/D | 0.100 | 0.010 |
| CHLORFENAPYR | 0.100 | N/D | 0.100 | 0.010 |
| COUMAPHOS | 0.100 | N/D | 0.100 | 0.010 |

| Pesticide | Action Level (ppm) | Results (ppm) | LOQ (ppm) | LOD (ppm) |
|-------------------------|--------------------|---------------|-----------|-----------|
| CYFLUTHRIN | 2.000 | N/D | 0.100 | 0.010 |
| CYPERMETHRIN | 1.000 | N/D | 0.100 | 0.010 |
| PARATHION-METHYL | 0.100 | N/D | 0.100 | 0.010 |
| PENTACHLORONITROBENZENE | 0.100 | N/D | 0.100 | 0.010 |

LC-MS/MS

| Pesticide | Action Level (ppm) | Results (ppm) | LOQ (ppm) | LOD (ppm) |
|---------------------|--------------------|---------------|-----------|-----------|
| ABAMECTIN B1A | 0.100 | N/D | 0.005 | 0.005 |
| ACEPHATE | 0.100 | N/D | 0.005 | 0.001 |
| ACEQUINOCYL | 0.100 | N/D | 0.005 | 0.005 |
| ACETAMIPRID | 0.100 | N/D | 0.005 | 0.005 |
| ALDICARB | 0.100 | N/D | 0.005 | 0.005 |
| AZOXYSTROBIN | 0.100 | N/D | 0.005 | 0.001 |
| BIFENAZATE | 0.100 | N/D | 0.005 | 0.001 |
| BIFENTHRIN | 3.000 | N/D | 0.005 | 0.005 |
| BOSCALID | 0.100 | N/D | 0.005 | 0.005 |
| CARBARYL | 0.500 | N/D | 0.005 | 0.001 |
| CARBOFURAN | 0.100 | N/D | 0.005 | 0.001 |
| CHLORANTRANILIPROLE | 10.000 | N/D | 0.005 | 0.005 |
| CHLORPYRIFOS | 0.100 | 0.007 | 0.005 | 0.005 |
| CLOFENTEZINE | 0.100 | N/D | 0.005 | 0.005 |
| DAMINOZIDE | 0.100 | N/D | 0.005 | 0.001 |
| DIAZINON | 0.100 | N/D | 0.005 | 0.005 |
| DICHLORVOS | 0.100 | N/D | 0.005 | 0.001 |
| DIMETHOATE | 0.100 | N/D | 0.005 | 0.001 |
| DIMETHOMORPH | 2.000 | N/D | 0.005 | 0.001 |
| ETHOPROPHOS | 0.100 | B/LOQ | 0.005 | 0.001 |
| ETOFENPROX | 0.100 | N/D | 0.005 | 0.005 |
| ETOXAZOLE | 0.100 | N/D | 0.050 | 0.005 |
| FENHEXAMID | 0.100 | N/D | 0.005 | 0.001 |
| FENOXYCARB | 0.100 | N/D | 0.005 | 0.005 |
| FENPYROXIMATE | 0.100 | N/D | 0.005 | 0.005 |
| FIPRONIL | 0.100 | N/D | 0.005 | 0.005 |
| FLONICAMID | 0.100 | N/D | 0.025 | 0.005 |
| FLUDIOXONIL | 0.100 | N/D | 0.005 | 0.005 |
| HEXYTHIAZOX | 0.100 | N/D | 0.005 | 0.005 |
| IMAZALIL | 0.100 | N/D | 0.005 | 0.001 |

| Pesticide | Action Level (ppm) | Results (ppm) | LOQ (ppm) | LOD (ppm) |
|-----------------|--------------------|---------------|-----------|-----------|
| IMIDACLOPRID | 5.000 | N/D | 0.005 | 0.001 |
| KRESOXIM-METHYL | 0.100 | N/D | 0.005 | 0.005 |
| MALATHION | 0.500 | N/D | 0.005 | 0.001 |
| METALAXYL | 2.000 | N/D | 0.005 | 0.001 |
| METHIOCARB | 0.100 | N/D | 0.005 | 0.001 |
| METHOMYL | 1.000 | N/D | 0.005 | 0.001 |
| MEVINPHOS | 0.100 | N/D | 0.005 | 0.001 |
| MYCLOBUTANIL | 0.100 | N/D | 0.005 | 0.005 |
| NALED | 0.100 | N/D | 0.005 | 0.001 |
| OXAMYL | 0.500 | N/D | 0.005 | 0.001 |
| PACLOBUTRAZOL | 0.100 | N/D | 0.005 | 0.005 |
| PERMETHRINS | 0.500 | N/D | 0.005 | 0.005 |
| PHOSMET | 0.100 | N/D | 0.005 | 0.001 |
| PIPERONYL | 3.000 | N/D | 0.005 | 0.005 |
| BUTOXIDE | 0.100 | N/D | 0.005 | 0.005 |
| PRALLETHRIN | 0.100 | N/D | 0.010 | 0.005 |
| PROPICONAZOLE | 0.100 | N/D | 0.005 | 0.001 |
| PROPOXUR | 0.100 | N/D | 0.005 | 0.001 |
| PYRETHRINS | 0.500 | N/D | 0.005 | 0.001 |
| PYRIDABEN | 0.100 | N/D | 0.005 | 0.005 |
| SPINETORAM | 0.100 | N/D | 0.005 | 0.005 |
| SPINOSAD | 0.100 | N/D | 0.005 | 0.005 |
| SPIROMESIFEN | 0.100 | N/D | 0.005 | 0.001 |
| SPIROTETRAMAT | 0.100 | N/D | 0.005 | 0.005 |
| SPIROXAMINE | 0.100 | N/D | 0.005 | 0.001 |
| TEBUCONAZOLE | 0.100 | N/D | 0.005 | 0.001 |
| THIACLOPRID | 0.100 | N/D | 0.005 | 0.001 |
| THIAMETHOXAM | 5.000 | N/D | 0.005 | 0.001 |
| TRIFLOXYSTROBIN | 0.100 | N/D | 0.005 | 0.005 |

N/D = Not Detected, A/LOQ = Above LOQ Level, B/LOQ = Below LOQ Level, B/LOD = Below LOD Level

Ben Witten, MS, MT., Lab Director

Green Scientific Labs
 info@greenscientificlabs.com
 1-833 TEST CBD



Green Scientific Labs uses its best efforts to deliver high quality results and to verify that the data contained therein are based on sound scientific judgment and levels listed are guidelines only and all data was reported based on standard laboratory procedures and deviations. However Green Scientific Labs makes no warranties or claims to that effect and further shall not be liable for any damage or misrepresentation that may result from the use or misuse of the data contained herein in any way. Further, Green Scientific Labs makes no claims regarding representations of the analyzed sample to the larger batch from which it was taken. Data and information in this report are intended solely for the individual(s) for whom samples were submitted and as part of our strict confidentiality policy, Green Scientific Labs can only discuss results with the original client of record.

CERTIFICATE OF ANALYSIS

ISO/IEC 17025:2017 ACCREDITATION #103104



Order #: 85416
Order Name: Medterra 2000mg
 Broad Spectrum Unflavored
 Tincture 30ml 210920
Batch#: 210920
Received: 10/04/2021
Completed: 10/08/2021

Medterra CBD, LLC
 9801 Research Drive
 Irvine CA, 92618
 (800) 971-1288
 support@medterracbd.com



RESIDUAL SOLVENTS:

HS-GC-MS

GSL SOP 405

Uploaded: 10/05/2021 09:47:35

| Residual Solvent | Action Level (ppm) | Results (ppm) | LOQ (ppm) | LOD (ppm) |
|---------------------|--------------------|---------------|-----------|-----------|
| 1,1-DICHLOROETHENE | 8 | N/D | 0.63 | 0.6 |
| 1,2- DICHLOROETHANE | 2 | N/D | 0.12 | 0.012 |
| 1,2-DICHLOROETHENE | 5 | N/D | 0.73 | 0.09 |
| ACETONE | 5,000 | N/D | 140 | 9 |
| ACETONITRILE | 410 | N/D | 25 | 0.72 |
| BENZENE | 1 | N/D | 1 | 0.6 |
| BUTANE | 5,000 | N/D | 50 | 48 |
| CHLOROFORM | 1 | N/D | 1 | 0.5 |
| ETHANOL | 5,000 | N/D | 140 | 12 |
| ETHYL ACETATE | 5,000 | N/D | 140 | 2.4 |
| ETHYL ETHER | 5,000 | N/D | 140 | 6 |
| ETHYLENE OXIDE | 1 | N/D | 2 | 0.6 |
| ISOPROPYL ALCOHOL | 5,000 | N/D | 140 | 3 |
| METHANOL | 3,000 | N/D | 100 | 6 |
| METHYLENE CHLORIDE | 125 | N/D | 1.5 | 1.5 |
| N-HEPTANE | 5,000 | N/D | 140 | 6 |
| N-HEXANE | 290 | N/D | 18 | 0.06 |
| PENTANE | 5,000 | N/D | 140 | 9 |
| PROPANE | 5,000 | N/D | 30 | 30 |
| TOLUENE | 890 | N/D | 53 | 0.9 |
| TRICHLOROETHENE | 1 | N/D | 1 | 0.3 |
| XYLENES | 150 | N/D | 130 | 1.8 |

Ben Witten, MS, MT., Lab Director

Green Scientific Labs
 info@greenscientificlabs.com
 1-833 TEST CBD



Green Scientific Labs uses its best efforts to deliver high quality results and to verify that the data contained therein are based on sound scientific judgment and levels listed are guidelines only and all data was reported based on standard laboratory procedures and deviations. However Green Scientific Labs makes no warranties or claims to that effect and further shall not be liable for any damage or misrepresentation that may result from the use or misuse of the data contained herein in any way. Further, Green Scientific Labs makes no claims regarding representations of the analyzed sample to the larger batch from which it was taken. Data and information in this report are intended solely for the individual(s) for whom samples were submitted and as part of our strict confidentiality policy, Green Scientific Labs can only discuss results with the original client of record.

CERTIFICATE OF ANALYSIS

ISO/IEC 17025:2017 ACCREDITATION #103104



Order #: 85416
 Order Name: Medterra 2000mg
 Broad Spectrum Unflavored
 Tincture 30ml 210920
 Batch#: 210920
 Received: 10/04/2021
 Completed: 10/08/2021

Medterra CBD, LLC
 9801 Research Drive
 Irvine CA, 92618
 (800) 971-1288
 support@medterracbd.com



Microbial Analysis:

Microbial Analysis GSL SOP 406

PCR - Agilent AriaMX

Uploaded: 10/06/2021 19:31:02

MICROBIAL ANALYSIS:

PCR - Agilent AriaMX

| Test | SOP | Test Method | Device Used | LOD | Allowable Criteria | Actual Result | Pass/Fail |
|--------------------------|--------|-------------|-------------|-----------|---------------------|---------------|-----------|
| SALMONELLA* | 406.01 | USP 61/62† | ARIAMX PCR | 1 CFU/G** | DETECT/NOT DETECTED | NOT DETECTED | PASS |
| STEC E. COLI* | 406.01 | USP 61/62† | ARIAMX PCR | 1 CFU/G** | DETECT/NOT DETECTED | NOT DETECTED | PASS |
| ASPERGILLUS FUMIGATUS*** | 406.01 | USP 61/62† | ARIAMX PCR | 1 CFU/G** | DETECT/NOT DETECTED | NOT DETECTED | PASS |
| ASPERGILLUS TERREUS*** | 406.01 | USP 61/62† | ARIAMX PCR | 1 CFU/G** | DETECT/NOT DETECTED | NOT DETECTED | PASS |
| ASPERGILLUS FLAVUS*** | 406.01 | USP 61/62† | ARIAMX PCR | 1 CFU/G** | DETECT/NOT DETECTED | NOT DETECTED | PASS |
| ASPERGILLUS NIGER*** | 406.01 | USP 61/62† | ARIAMX PCR | 1 CFU/G** | DETECT/NOT DETECTED | NOT DETECTED | PASS |

† USP 61 (enumeration of bacteria TAC, TYM, and ENT/Coliform), USP 62 (identifying specific species E.coli Aspergillus etc)

* STEC and Salmonella run as Multiplex

** CFU/g Calculation based on MIP/Extract matrix

*** Flavus = 2 Copies of DNA / Fumigatis = 2 Copies of DNA Niger = 20 Copies of DNA / Terrus = 10 copies of DNA

Ben Witten, MS, MT., Lab Director

Green Scientific Labs
 info@greenscientificlabs.com
 1-833 TEST CBD



Green Scientific Labs uses its best efforts to deliver high quality results and to verify that the data contained therein are based on sound scientific judgment and levels listed are guidelines only and all data was reported based on standard laboratory procedures and deviations. However Green Scientific Labs makes no warranties or claims to that effect and further shall not be liable for any damage or misrepresentation that may result from the use or misuse of the data contained herein in any way. Further, Green Scientific Labs makes no claims regarding representations of the analyzed sample to the larger batch from which it was taken. Data and information in this report are intended solely for the individual(s) for whom samples were submitted and as part of our strict confidentiality policy, Green Scientific Labs can only discuss results with the original client of record.

CERTIFICATE OF ANALYSIS

ISO/IEC 17025:2017 ACCREDITATION #103104



Order #: 85416
Order Name: Medterra 2000mg
Broad Spectrum Unflavored
Tincture 30ml 210920
Batch#: 210920
Received: 10/04/2021
Completed: 10/08/2021

Medterra CBD, LLC
9801 Research Drive
Irvine CA, 92618
(800) 971-1288
support@medterracbd.com



Mycotoxin Analysis:

LC-MS/MS
GSL SOP 401

Uploaded: 10/08/2021 14:42:52

| Analyte | Action Lvl (ppb) | Results (ppb) |
|--------------|------------------|---------------|
| AFLATOXIN B1 | 20 | N/D |
| AFLATOXIN B2 | 20 | N/D |
| AFLATOXIN G1 | 20 | N/D |
| AFLATOXIN G2 | 20 | N/D |
| OCHRATOXIN A | 20 | N/D |

LOQ is 1ppb, LOD is 1ppb

Heavy Metals Analysis:

ICP-MS
GSL SOP 403

Uploaded: 10/05/2021 11:04:40

| Metal | Action Level (ppb) | Result (ppb) |
|--------------|--------------------|--------------|
| ARSENIC (AS) | 2,000 | N/D |
| CADMIUM (CD) | 2,000 | N/D |
| MERCURY (HG) | 1,000 | B/LOQ |
| LEAD (PB) | 5,000 | B/LOQ |

Lower Limit of Quantitation (LOQ) is 75 ppb, Limit of Detection (LOD) is 3 ppb

Ben Witten, MS, MT., Lab Director

Green Scientific Labs
info@greenscientificlabs.com
1-833 TEST CBD



Green Scientific Labs uses its best efforts to deliver high quality results and to verify that the data contained therein are based on sound scientific judgment and levels listed are guidelines only and all data was reported based on standard laboratory procedures and deviations. However Green Scientific Labs makes no warranties or claims to that effect and further shall not be liable for any damage or misrepresentation that may result from the use or misuse of the data contained herein in any way. Further, Green Scientific Labs makes no claims regarding representations of the analyzed sample to the larger batch from which it was taken. Data and information in this report are intended solely for the individual(s) for whom samples were submitted and as part of our strict confidentiality policy, Green Scientific Labs can only discuss results with the original client of record.