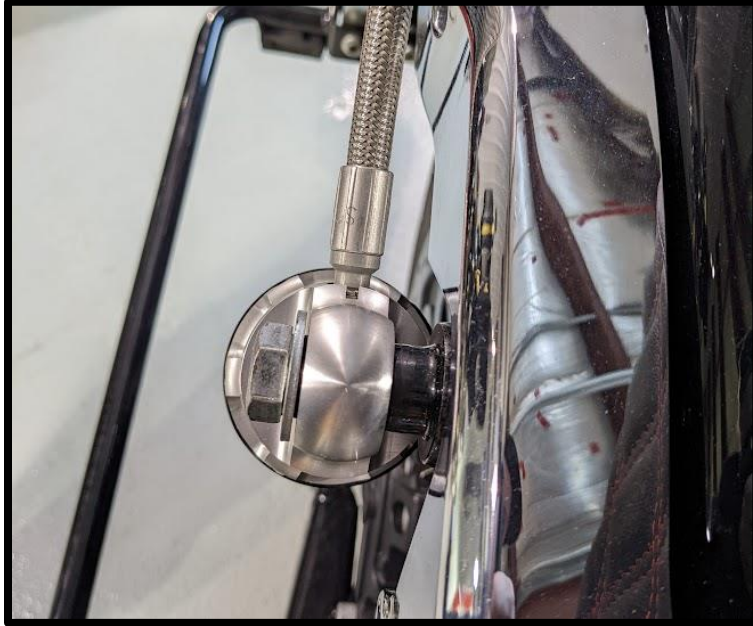


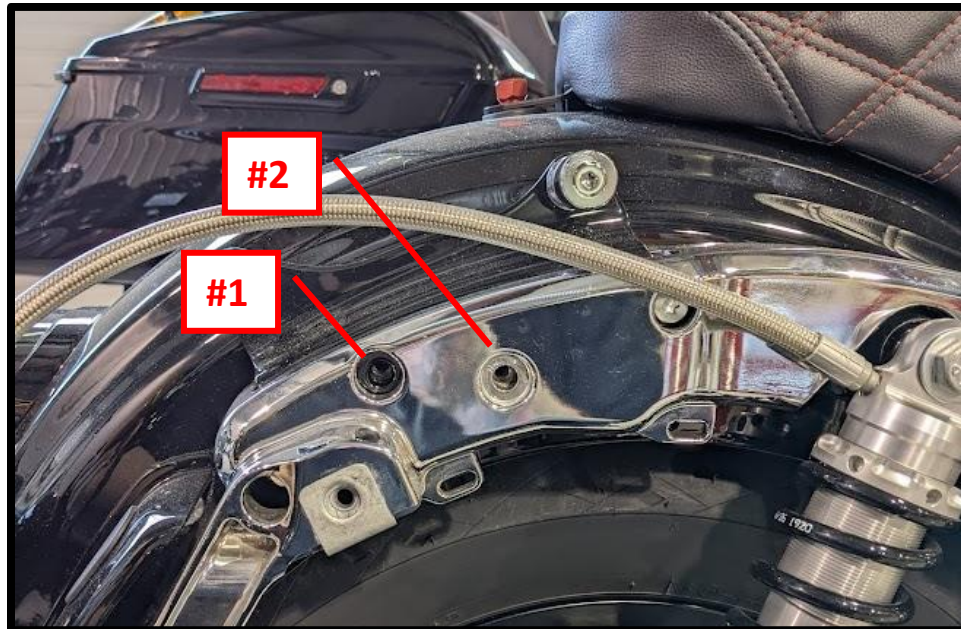


OG Touring Remote Reservoir Mounts Installation Instruction

1. Before you start your new OG touring remote reservoir mounts installation, you will need to remove both saddlebags.
2. You will also need to install your suspension following the instructions that come with it. To avoid any interference with your saddlebag lid, do not use any of the spacers provided with your suspension unless you are running an aftermarket swingarm. If you are using Legend suspensions, use the thinnest spacers available.



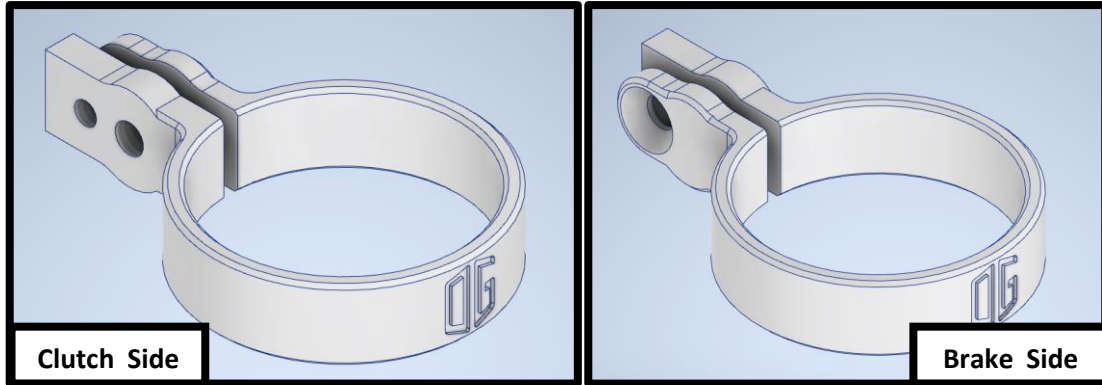
3. Remove the following hardware from both sides of the motorcycle.



4. Apply blue loctite to every bolt supplied with the kit

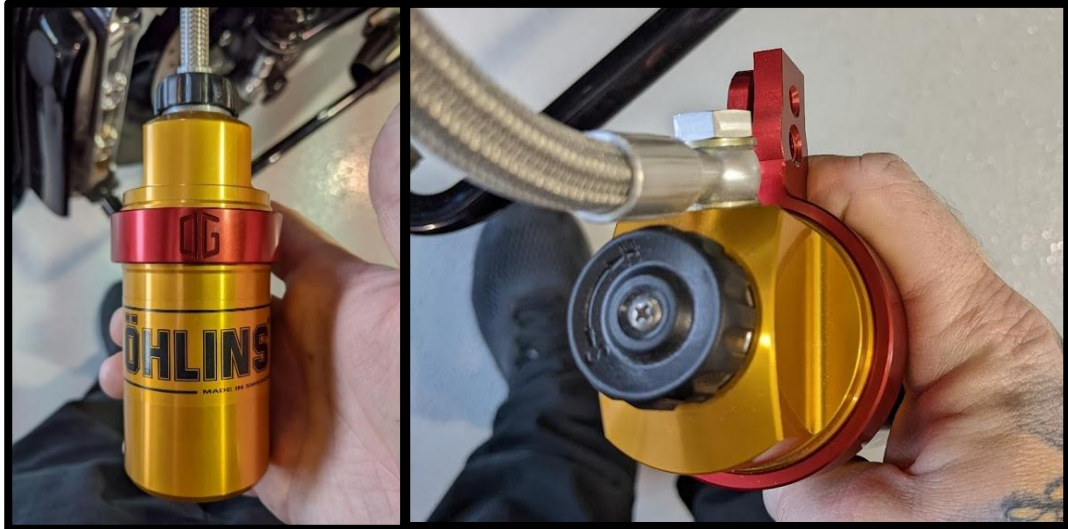
OG Touring Remote Reservoir Mounts Installation Instruction

5. Identify the clutch side and brake side reservoir support.

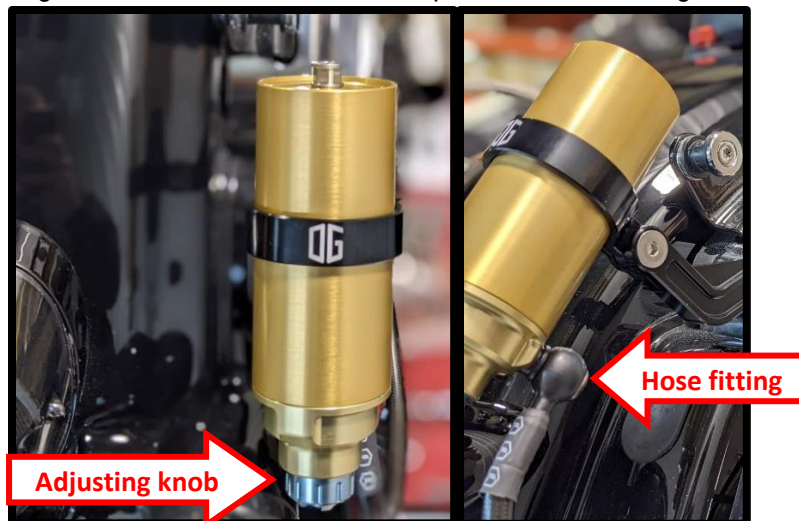


- 6.

- a. **Ohlins HD-044 suspension:** Place the reservoir support on the reservoir. Make sure that the hose is properly centred with the support's fixing braces.

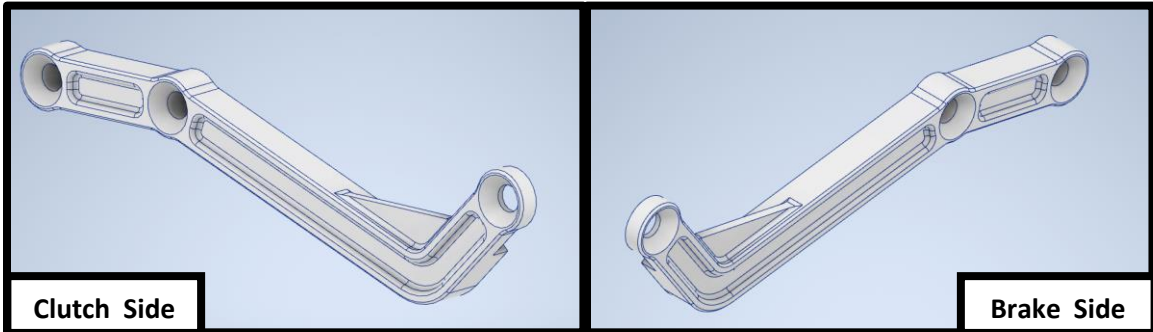


- b. **Legend suspension:** Place the reservoir support on the reservoir using the provided Legend reservoir shim. Refer to the pictures below for alignment reference.

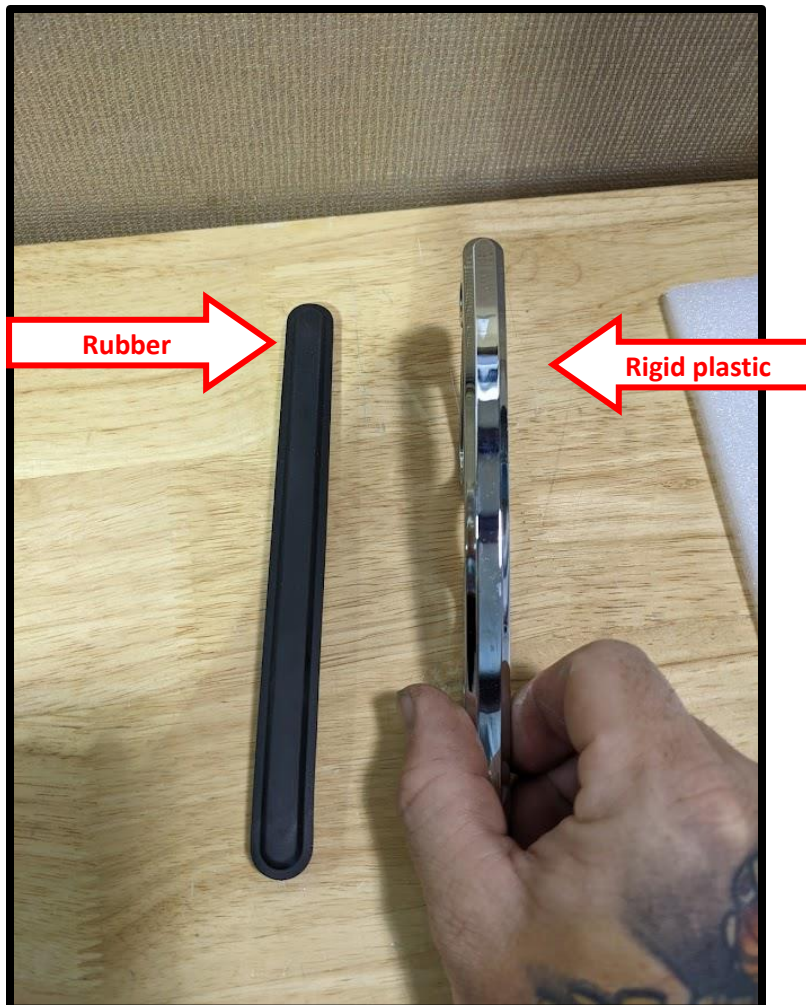


OG Touring Remote Reservoir Mounts Installation Instruction

7. Once the support is in place, tighten the 1/4"-20 flat head screw @ 10 ft-lbs
8. Identify the clutch side and brake side reservoir support arm.



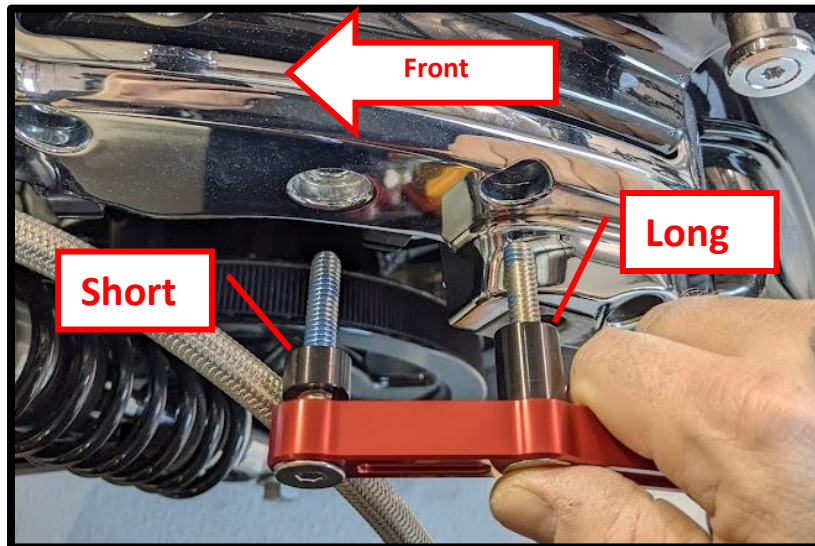
9. Identify if your bike is equipped with a rigid plastic or rubber saddlebag insert. If your bike is



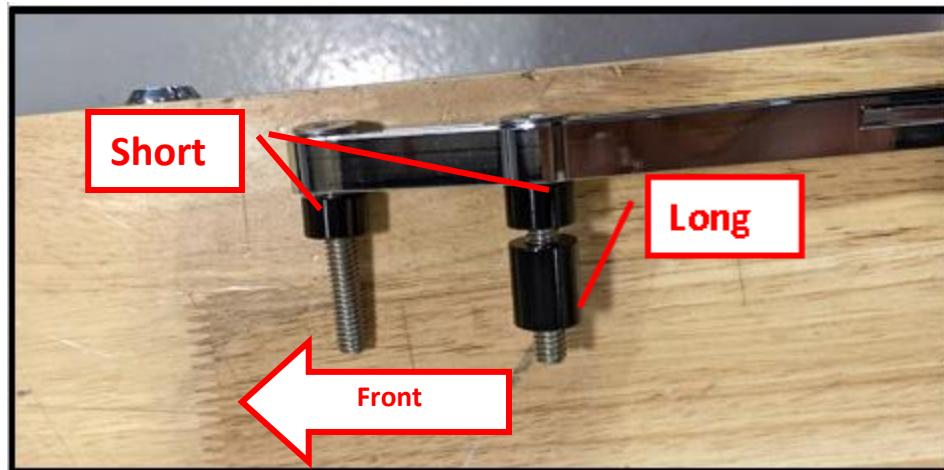
equipped with a rigid plastic cover or with a quick attach bracket, refer to section **9.A**. If your bike is equipped with a rubber insert, refer to section **9.B**.

OG Touring Remote Reservoir Mounts Installation Instruction

9.A) Install the support arm on each side of the motorcycle and make sure the spacers are positioned as shown in the picture below.



9.B)) Install the support arm on each side of the motorcycle and make sure the spacers are positioned as shown in the picture below.



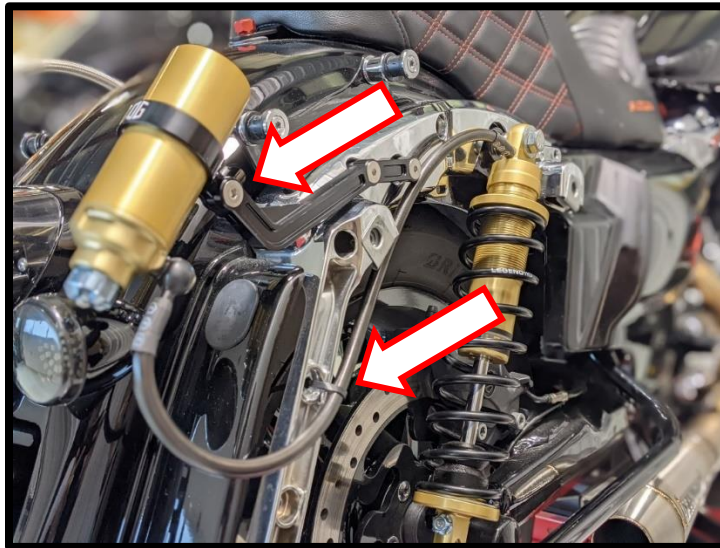
10.

- a. **Ohlins HD-044 suspension:** Install the reservoir mount on the support arm on both side using the 5/16"-18 flat head screw supplied with the kit. Make sure the hose is routed as shown on the picture. If the hose is rubbing against the saddlebag lid, make sure you got the proper spacing between the shock and shock mount (step 2).

OG Touring Remote Reservoir Mounts Installation Instruction



- b. **Legend suspension:** Install the reservoir mount on the support arm on both side using the 5/16"-18 flat head screw supplied with the kit. Make sure the hose is routed as shown on the picture. Secure the hose as shown in the picture below with the supplied zip tie.



11. Tighten all the 5/16"-18 flat head screws @ 22 ft-lbs
12. Enjoy!