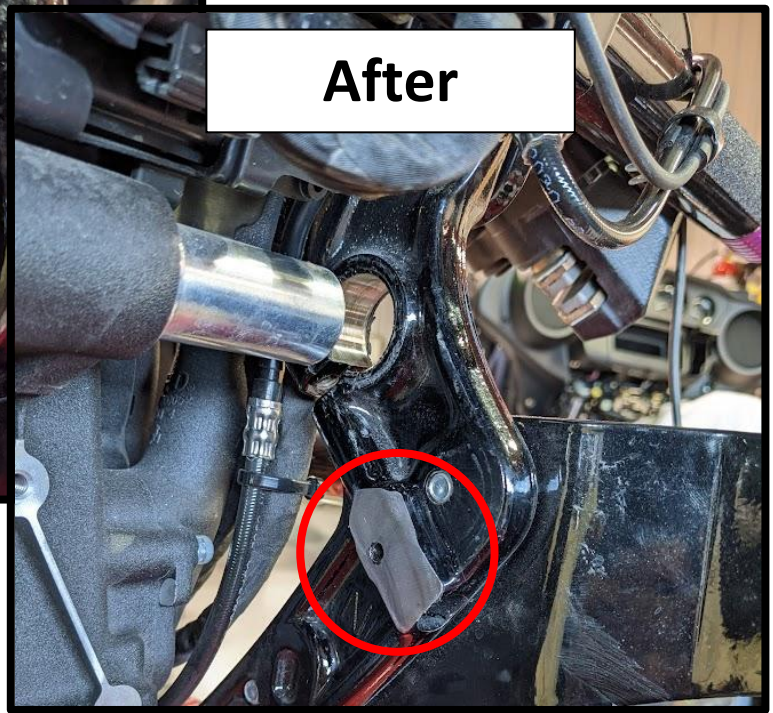
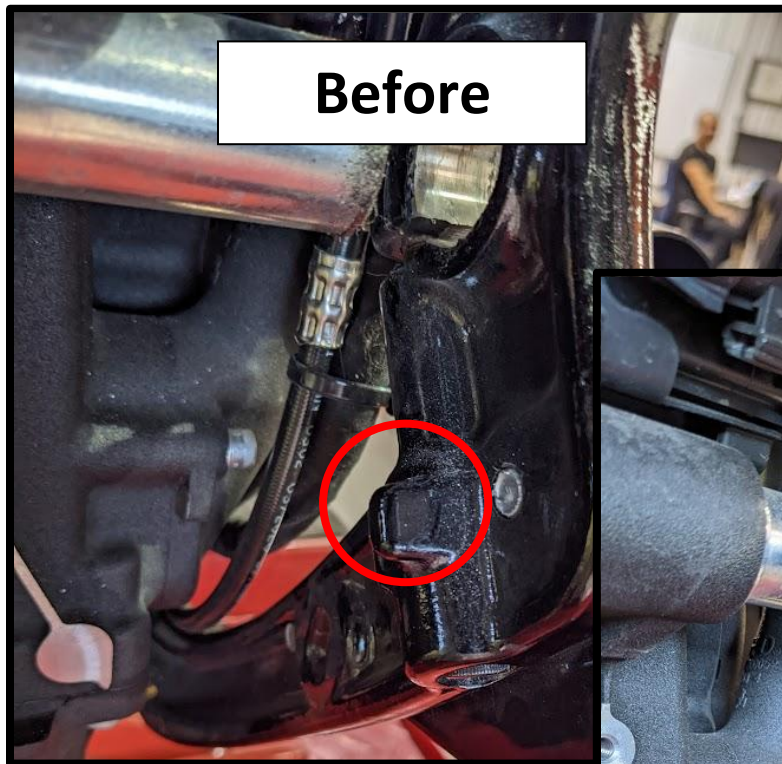


## OG M8 Softail Shock Extension Frame modification instruction-1.0

If you wish to use a shock longer than 13.5" on your M8 Softail, you will need to make some modifications to your frame in order to make room for the swingarm to travel. Please refer to the following table to see if you need to make this modification.

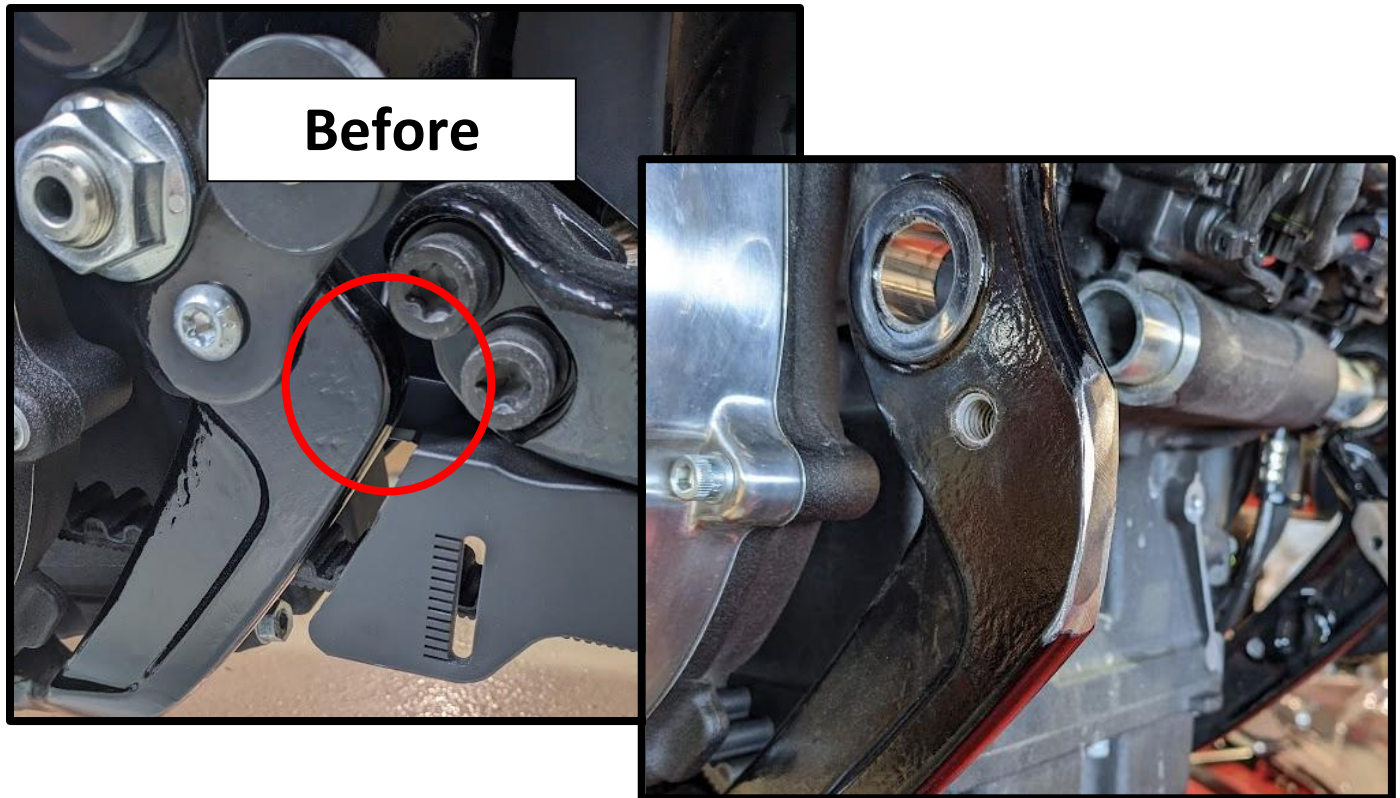
Shock Model	Min. Length (using OG extension)	Max. Length (using OG extension)
HD 503	13.5	14
HD 504	13.5	14
HD 505	13.750	14.250
HD 506	13.750	14.250

1. Remove rear wheel. Refer to your shop manual for detailed instructions.
2. Remove rear shock. Refer to your shop manual for detailed instructions.
3. Remove swingarm. Refer to your shop manual for detailed instructions.
4. Using a grinder and a flap disc, remove the right-hand sight swing arm stopper.



**OG M8 Softail Shock Extension Frame modification instruction-1.0**

5. Using a grinder and a flap disc, remove the left-hand sight triangle shaped frame part.



6. Re-install the swingarm and shock assembly to make sure that enough material has been removed. If the swingarm does not clear the frame, mark the contact point, remove the swingarm and grind the marked area.
7. Once enough material has been removed, use gloss black paint to cover the grinded area.
8. Once the paint is dried up, re-install the swingarm, shock and rear wheel according to your shop manual.