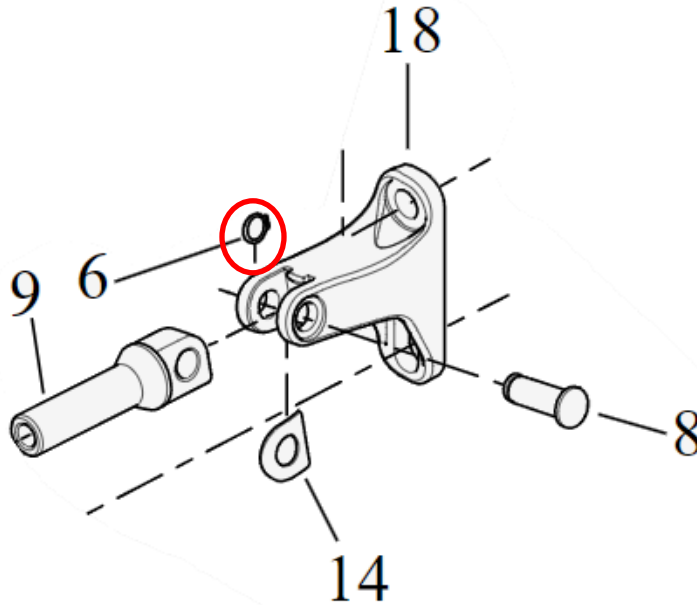
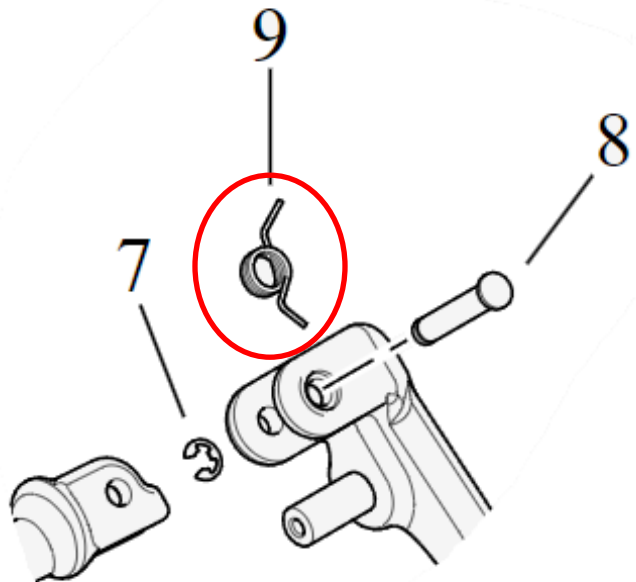


Please refer to your bike service manual for additional guidance.

1. Remove the OEM footpegs and keep all the hardware.
 - a. **Dyna/FXR/XL & Bagger Passenger:** Be careful. On some models using a clevis pin and a circlip, the circlip holding the clevis pin in place tends to be ejected when taking off.

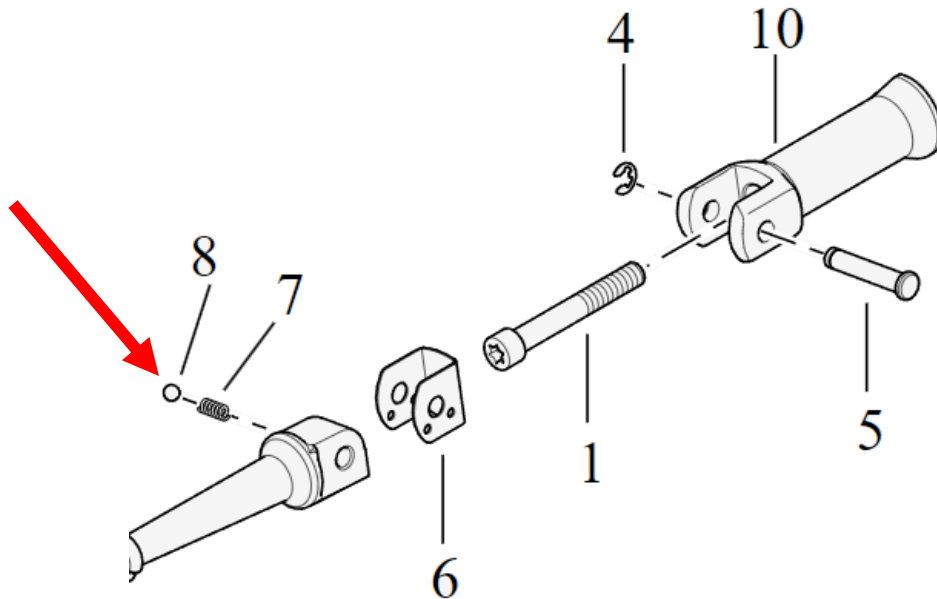


- b. **2018+ M8 Softail / Pan America Front:** There's a spring forcing the peg to go horizontal. You will need that spring with the OG Foot Pegs. Make sure to replicate the OEM spring positioning.



OG Foot Pegs Installation-2.0

- c. **2018+ M8 Softtail Rear:** There's a spring (7), ball (8), and bent metal plate (6) that helps keep the peg in the upward position when not in use. When disassembling, make sure to keep the bent metal plate, ball, spring, and OEM together by firmly holding the bent metal plate. When the OEM is separated from the peg mount, slowly release the bent metal plate to remove the ball and spring. Failure to do so will eject the ball and disturb your installation.

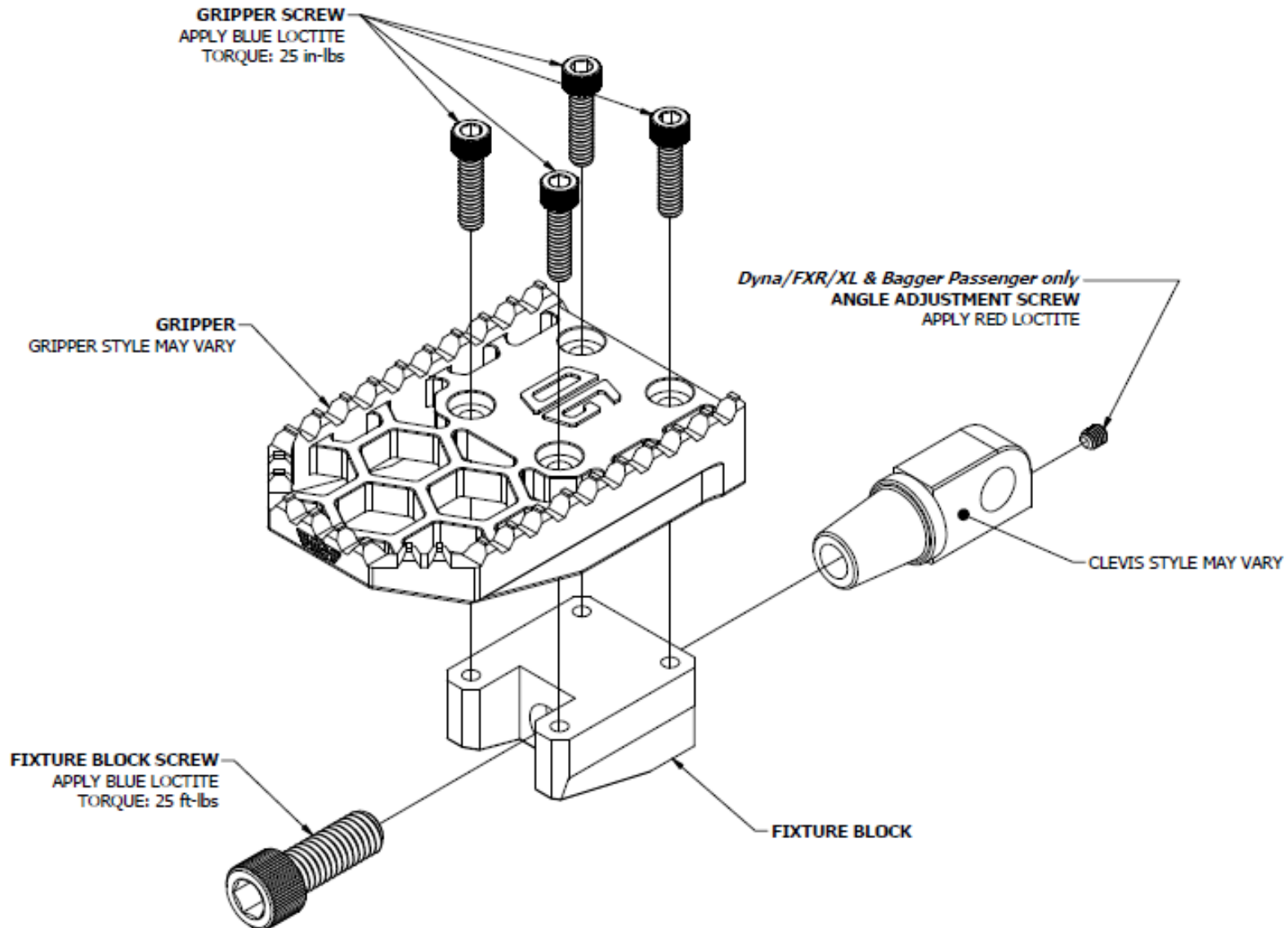


2. Install the OG Clevis using the OEM hardware. Please refer to your bike service manual for additional guidance.
3. Install the gripper and fixture block assembly on the OG Clevis.
4. Put some blue Loctite on the fixture block screw and hand-tighten it to secure the gripper and fixture block assembly. **DO NOT TORQUE THE FIXTURE BLOCK SCREW AT THIS POINT.**
5. On Dyna/FXR/XL & Bagger Passenger models, use the angle adjustment set screw to add more angle to your footpeg. Make sure to put some red Loctite on the set screw.
6. Adjust the gripper and fixture block assembly by rotating it on the fixture block.
7. Torque the fixture block screw to **25 ft-lbs.**
8. Remove the 4 gripper screws, apply blue Loctite and torque to **25 in-lbs.**
9. If you need to readjust the angle of your foot peg, refer to the schematic on page 4 to detach the clevis from the fixture block.



OG Foot Pegs Installation-2.0

OG Foot Pegs Installation Guidelines

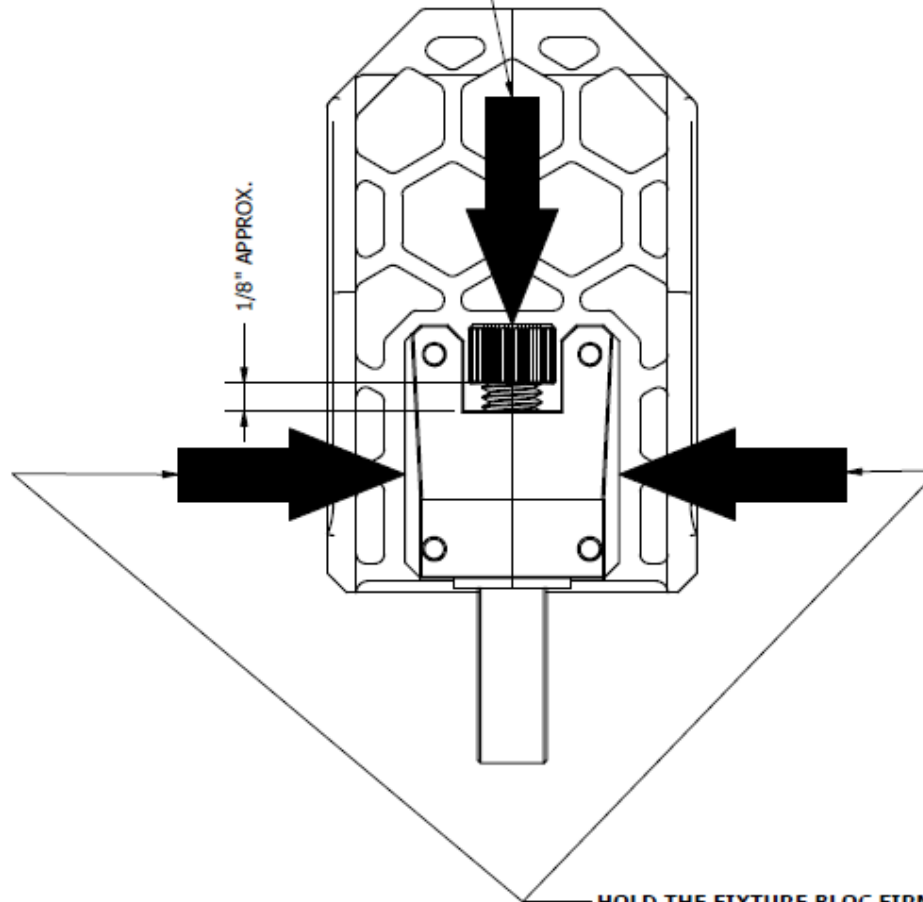




OG Foot Pegs Installation-2.0

OG Foot Pegs Adjustments Guidelines

HIT FIRMLY USING 3/8" ALLEN SOCKET AND HAMMER



HOLD THE FIXTURE BLOC FIRMLY WITH A VISE
USE SOFT JAW TO AVOID ANY DAMAGES TO THE FIXTURE BLOCK