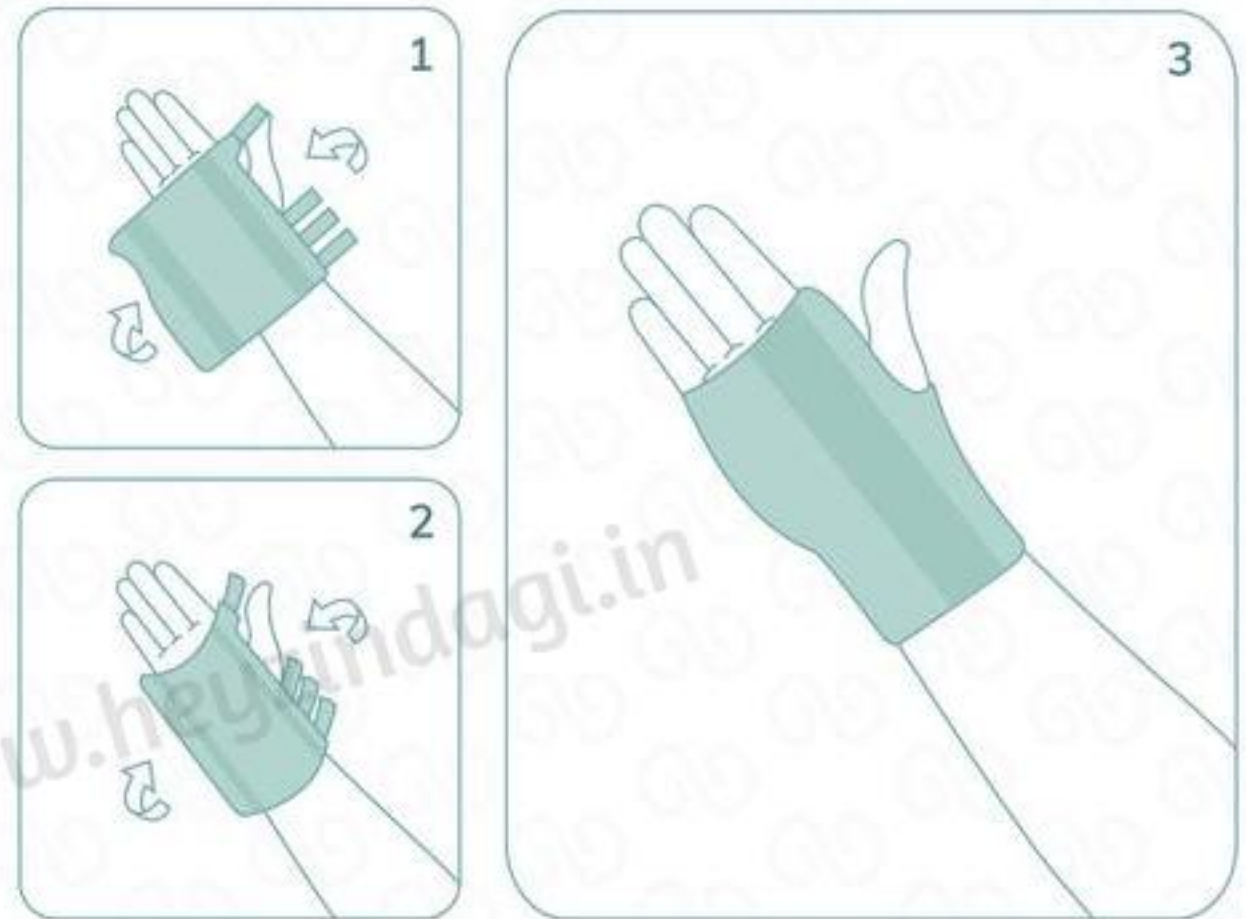


How to Wear?

- Please ensure you order the right splint as per the Size Chart below
- Open all the straps and lay the splint in front of you with the Oppo logo facing upwards
- Depending on the hand, shift the metal stay into the necessary pocket.
- Place the contoured design of the splint on the palm of your hand and hold it in place with your thumb
- Wrap the splint from around the palm and secure the three fasteners adjacent to the palm to desired compression
- Check for discomfort especially blood circulation or numbness
- Finally, secure the top most fastener by passing it between the thumb and first finger



REMEMBER

- Please do not wear this support continually - remove it to dry the accumulated sweat
- Wash it regularly to get rid of sweat body odors and unclog the neoprene pores

- Don't bathe with the unit - it will reduce the elasticity and compression quality of the support
- Never share your orthopaedic aid - can lead to a transfer of infection or allergy

P.S.: Kindly consult your Physician or Orthopaedic Specialist before using this product