

Graco Midsize Electric Sprayers

Increased performance, advanced technology

When you need the increased productivity to handle medium residential and light commercial spraying jobs, Graco's Midsize electric airless sprayers deliver the performance you demand. With features that make it easier to get more work done in a day, these sprayers provide increased flow and production rates over our small electric sprayers.

Midsize Electrics

SmartControl 2.5

- ▶ Ideal for FF LP tips commonly used for fine finish work and low overspray applications
- ▶ Digital display shows pressure, gallons, and hours
- ▶ Provides error messages and diagnostics
- ▶ Aids in fleet management

Fast Flush



Fast Flush™

- ▶ FastFlush high flow cleaning system runs faster and dramatically reduces cleaning time

MaxPower Motor

- ▶ Graco's compact and powerful brushless DC motors are designed to produce the most power possible for all painting applications
- ▶ Higher torque = More work done
- ▶ Totally enclosed, fan-cooled design protects the internal components of the motor from dirt, dust and overspray
- ▶ Brushless design means that you will never need to replace brushes
- ▶ DC motors are more forgiving to voltage fluctuation allowing them to run on longer power cords
- ▶ Lifetime warranty

Endurance Pump

- ▶ The most reliable pump on the market—lasts 2 times longer than the next leading brand
- ▶ Long-life V-Max Blue™ packings, Chromex™ rod and hardened stainless steel cylinder
- ▶ QuikAccess™ intake valve for fast cleaning or debris clearing



Stand model

Easy Out™ Pump Filter

- ▶ Vertical design helps eliminate spills
- ▶ Filters from the inside out and won't collapse
- ▶ Large 7.8 square inch filtering area reduces tip clogs
- ▶ Flow-through design cleans with only a few gallons

Advantage Drive™

- ▶ Hardened steel gears run extremely quiet
- ▶ High ratio reduction provides slow pump stroking that reduces wear and extends pump life

Ready to Work

- ▶ Professional grade hose, gun, tip and throat seal liquid included
- ▶ Lighted plug verifies power
(595 PC Pro model excluded)

Finish Every Job, Every Day

with Graco's ProConnect™ and Endurance Now™ program



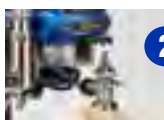
ProConnect

- **Fast and Easy** on-the-job Pump Replacement System
- Available on small and midsize electric sprayers

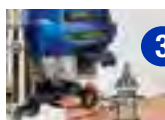
Being able to quickly change a pump on the job site can be the difference between a productive day of spraying and one spent waiting on replacement parts or behind the wheel taking your sprayer to be serviced. Thanks to the ProConnect™ Pump Removal System, Graco makes pump swaps fast and easy. In three simple steps, you can remove the pump on Graco's small and midsize electric sprayers. No more time wasted or money lost to labor charges on pump repairs—with a spare pump at the ready, you'll never have a down day.



Loosen the clamping nut



Open door and remove pump



Remove hose and suction tube

Fast Pump Removal

- 1-minute jobsite replacement
- Keeps you spraying instead of waiting for service
- No pins or parts to lose!

Graco has the One-Part Solution to Keep You Spraying!

Whether you need the longest life Endurance Pump for medium-to-heavy use or the Express Pump for lighter use, Graco's Pump Replacement System provides the only one-part pump replacement solution on the market today. Pick up a spare and keep spraying!

- **Eliminate Downtime**
- **Replace Pump "On-the-Job"**
- **Pick Up a Spare Today!**



The **Ultra Max II 495 PC Pro** brings the leading technology and performance of Graco's larger Ultra Max II models into a compact and lightweight design.



*Lo-Boy model shown.
Stand and Hi-Boy
models also available.*

Features



The **Ultra Max II 595 PC Pro** sprayer is the ideal choice for the painting professional who needs the highest possible output from a small, portable unit.

Features



Kickstand on Hi-boy models holds inlet clear of the bucket for easy one-person bucket changes.

*Hi-Boy model shown.
Lo-Boy model also available.*

Suitable for Wide RAC® tips.

Long Stroke Pump reduces wear and extends time between repacks.



Midsize Electrics

Ultra Max II 495 PC Pro

DESCRIPTION	PART #
STAND	17C333
HI-BOY	17C335
LO-BOY	17C334
SPECIFICATIONS	
MAX TIP SIZE:	0.025
MAX GPM (LPM):	0.60 (2.3)
MAX PSI (BAR):	3300 (227)
MOTOR HP:	1.2 Brushless DC

INCLUDES

- Contractor Gun
- RAC X 517 SwitchTip and Guard
- 1/4 in x 50 ft (6.4 mm x 15 m) BlueMax™ II Airless Hose
- Endurance Pump

Ultra Max II 595 PC Pro

DESCRIPTION	PART #
HI-BOY	17C337
LO-BOY	17C336
SPECIFICATIONS	
MAX TIP SIZE:	0.027
MAX GPM (LPM):	0.70 (2.6)
MAX PSI (BAR):	3300 (227)
MOTOR HP:	1.6 Brushless DC

INCLUDES

- Contractor Gun
- RAC X 517 SwitchTip and Guard
- 1/4 in x 50 ft (6.4 mm x 15 m) BlueMax™ II Airless Hose
- Endurance Pump