

SPRINTUS

Professional Cleaning Equipment



World's first digital dry vacuum cleaner with integrated **Bluetooth** connection and a cloud-based **fleet management** system

ERA PRO

WORLD FIRST DIGITAL TECHNOLOGY

13L DRY COMMERCIAL VACUUM CLEANER



CONTACT US FOR YOUR NEAREST STOCKIST

(03) 9460 5655

sales@cleanstar.com.au

cleanstar.com.au





Fleet Management Demo



ERA PRO

WHAT IS THE FLEET MANAGEMENT SYSTEM?

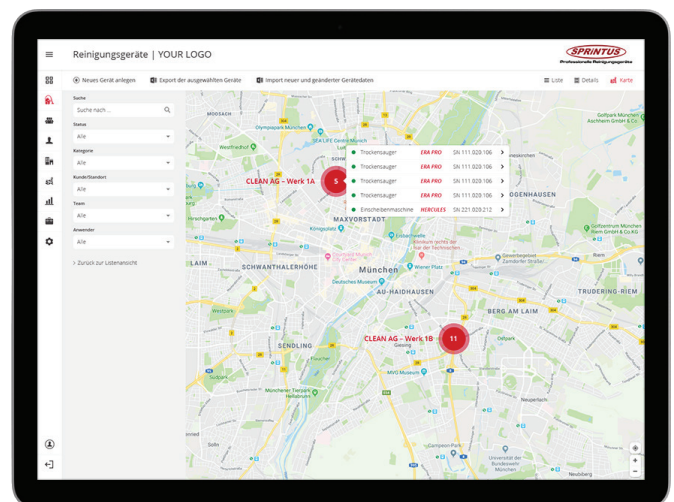
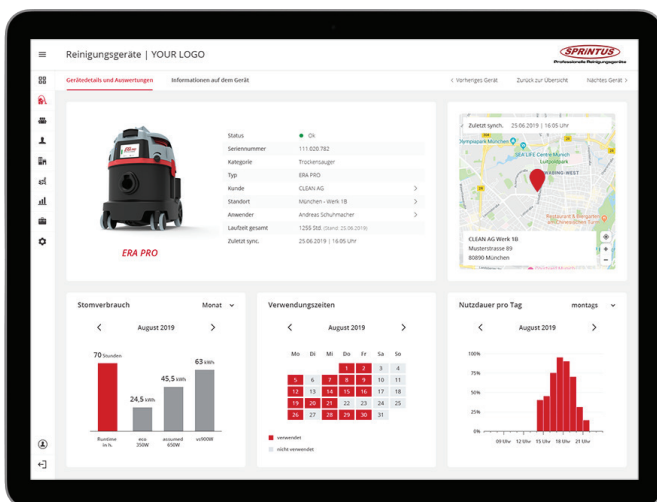
The SPRINTUS browser-based fleet management system allows you to centrally manage all ERA PRO dry vacuum cleaners and keep an eye on everything at all times. All basic information about your ERA PRO is shown in a compact manner.

You can call up data relevant for each ERA PRO, such as **location, property names, users, daily run times, maintenance dates, or faults** at any time. With an **integrated Bluetooth interface** via the **SPRiNTUS APP**, all data is synchronised by smartphone and displayed in real time in the web portal.

Advantages:

- Overview of the status and run times of all devices
- Faults and maintenances are displayed individually
- Visualisation of the devices by map on a property basis
- Extensive software functions and reports
- Professional, customisable interface

Log-in via the SPRINTUS web portal: era.sprintus.eu/portal



**Download
the free
SPRiNTUS APP**



Download on the
App Store



GET IT ON
Google Play



ERA PRO **THE NEW ERA OF CLEANING**

The **ERA PRO** sets the new benchmark in professional cleaning with its **interactive touch display** and is the **world's first digital** dry vacuum cleaner with a **Bluetooth connection** and a cloud-based **fleet management system**.



How to set up your device and connect to the SPRiNTUS app

INTERACTIVE TOUCH DISPLAY FEATURES:

Check out some of the innovative features available on the digital display screen below...



Display screen can be customised with your digital company logo via the SPRiNTUS APP



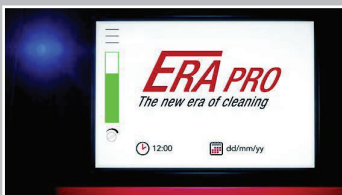
Read out/synchronise device data via the integrated Bluetooth interface



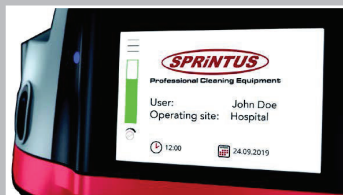
View run times, faults and maintenance instructions



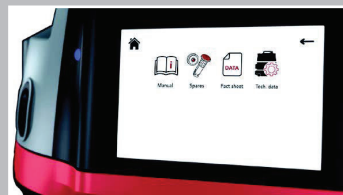
Individual language selection (ENG, DE, DR, IT)



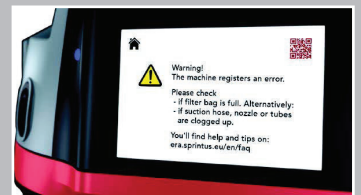
Interactive touch display screen with current date and time



Individually adjustable home screen - property and user data can be input and displayed



User can view links to spare parts drawings, user manuals and product data sheets on the display screen



In the event of a fault, solution suggestions are shown on the display

ERA PRO

WORLD FIRST DIGITAL TECHNOLOGY

13L DRY COMMERCIAL VACUUM CLEANER

- Powerful and energy saving 700 watt motor
- H13 HEPA filtration
- Quiet operation - 49-54 LpA (dB)
- Light weight - only 5.7kg
- 13L tank capacity | 9L dust bag capacity
- Washable fleece filter basket for bagless vacuuming
- Can be used with bag or bagless
- Combination floor tool with rubber rear wheels for carpets and hard floors
- Crevice tool and combined furniture/upholstery nozzle
- Telescopic rod
- Detachable 12m quality IEC power cord
- Long 2.5m vacuum hose
- Three parking positions for floor tool storage
- On-board tool & rod storage
- Dust bag full indicator light (red)



Model: **VERAPRO**



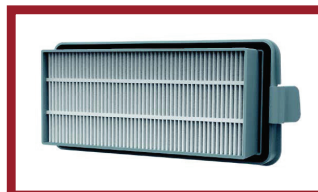
OTHER FEATURES:



On-board USB charging port for mobile phones



3-in-1 USB charger cable (USB-C, Micro-USB, Lightning)



HEPA 13 exhaust filter cartridge



Integrated cable rewind system with open design



Removeable rear storage box to carry mobile phone



Large foot switch for turning on/off without bending down



Internal storage compartment for spare dust bag



Variable suction control

CONTACT US FOR YOUR NEAREST STOCKIST

(03) 9460 5655

sales@cleanstar.com.au

cleanstar.com.au

