



Platinum Series

Reverse Osmosis Water Purification System

This is for the set of Platinum Pure Standard replacement filters for the Ultra Pur Reverse Osmosis system. It is recommended that these filters be changed out every year to ensure the highest quality filtration.

Reverse Osmosis Platinum Pure Standard & Plus Filter Change Instructions

Preparation

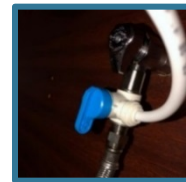
*Place either towels or paper towels directly underneath the system to catch any remaining water.

*When changing the MEMBRANE, you must install the new membrane before installing the Platinum Pure Standard filters.

*Please note, your filters may look different than the ones depicted in these pictures.

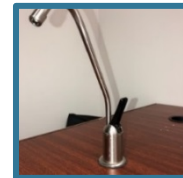
1) Shut off the water |

- Locate the shutoff valve for the **Feed** and turn it OFF.
- Locate the shutoff valve for the **Tank** and turn it OFF.



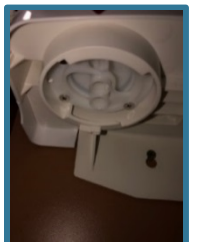
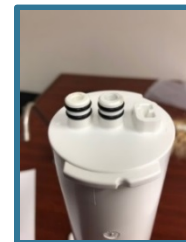
2) Release the pressure in the system |

- Open the spigot until water stops dripping.
- Close the spigot when the drip stops.



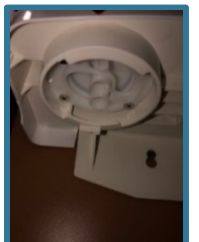
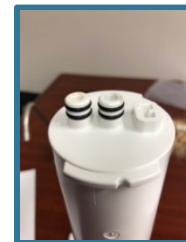
3) Remove the old filters |

- Remove the filter by turning it CLOCKWISE 90 degrees until the filter will not turn any further, then pull down. **Tip: place one hand on the manifold for leverage to allow for the filter to wiggle (while pulling down), but do it gently! Most of the force should be applied pulling down on the filter.*



4) Begin the flushing procedure |

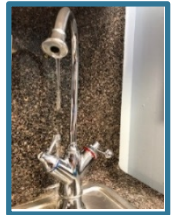
- Temporarily install one of the new Platinum Pure Standard filters into the POST filter slot by lining up the 2 inserts on the top of the Platinum Pure Standard filter into the corresponding ports on the filter housing.
- Turn the filter counter clockwise 90 degrees until the filter will not turn any further and the label is facing directly outwards.
- OPEN the spigot (on top of the sink), then OPEN and close the tank (3 sec. intervals) until the water consistently runs clear.
- Once the water runs clear, close the TANK, and wait for the water to stop dripping. Once it has, turn the spigot OFF.



- e. Remove the new Platinum Pure Standard filter from the POST filter slot (See step 4) and reinstall it on the PRE filter slot.
- f. Install the second Platinum Pure Standard filter onto the POST filter slot, then repeat steps b-d leaving the spigot ON instead.

5) Pressure test the system |

- a. With the Spigot ON, the Tank OFF, and all filters installed, turn the FEED back ON. **You should begin to see water trickling out of the spigot, intermittent at first, then a constant trickle.*
- b. Once proper flow has been established, turn the spigot OFF.
- c. Let the system pressure up for 10 minutes, checking thoroughly for any leaks.
- d. If no leaks have been detected after 10 minutes under pressure, OPEN the tank, and complete the final flushing procedure.



6) Final flush |

- a. Let the tank fill for approximately 1 hour, then open the spigot and drain the tank until the stream of water returns to a steady trickle.
- b. After the system has drained, turn the spigot back off, let the tank refill again (approximately one hour).
- c. Your Reverse Osmosis Drinking Water System is ready to be used again.
- d. Enjoy your great tasting Dupure water!

***Following a filter change, the water from your spigot may appear slightly cloudy due to air remaining in the system. This water is completely safe to drink and will return to normal clarity within a few days. For any issues regarding filter changes, please reach out to our Technical Support department at (877) 534-5837 ext. 7*

dupure

dupure.com | (877) 534-5837

Austin | Dallas | Fort Worth | Houston | San Antonio | Las Vegas | Los Angeles | Phoenix