



DEA No. RA0571996  
FL License # CMTL-0003  
CLIA No. 10D1094068

# Certificate of Analysis

## Compliance Test

**Top Shelf Hemp Co**  
13720 SHORELINE CT. E  
EARTH CITY, MO 63045

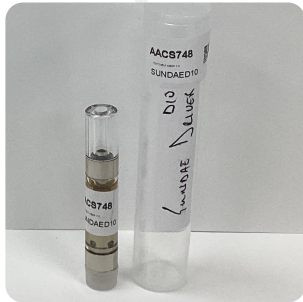
Batch # SUNDAED10  
Batch Date: 2022-04-20  
Extracted From: HEMP

Test Reg State: Florida

Order # TOP220420-130001  
Order Date: 2022-04-20  
Sample # AAC5748

Sampling Date: 2022-04-25  
Lab Batch Date: 2022-04-25  
Completion Date: 2022-04-28

Initial Gross Weight: 9.408 g



Product Image

Potency  
Tested

**Delta 8/Delta 10  
Potency 12**

Specimen Weight: 50.180 mg

Analyte	LOD (%)	LOQ (%)	Result (mg/g)	(%)
Delta-8 THC	0.000026	0.001	689.170	68.917
Delta-10 THC	0.000003	0.001	9.940	0.994
CBD	0.000054	0.001	5.060	0.506
CBC	0.000018	0.001	<LOQ	<LOQ
THCA	0.000032	0.001	<LOQ	<LOQ
Delta-9 THC	0.000013	0.001	<LOQ	<LOQ
CBN	0.000014	0.001	<LOQ	<LOQ
CBGA	0.000008	0.001	<LOQ	<LOQ
CBG	0.000248	0.001	<LOQ	<LOQ
CBDV	0.000065	0.001	<LOQ	<LOQ
CBDA	0.000001	0.001	<LOQ	<LOQ
THCV	0.000007	0.001	<LOQ	<LOQ

**Tested**  
(LCUV)

**Potency Summary**

<b>Total Delta 8</b> 68.917%	<b>Total Delta 10</b> 0.994%
<b>Total THC</b> None Detected	<b>Total CBD</b> 0.506%
<b>Total CBG</b> None Detected	<b>Total CBN</b> None Detected
<b>Other Cannabinoids</b> None Detected	<b>Total Cannabinoids</b> 70.417%

Xueli Gao  
Lab Toxicologist  
Ph.D., DABT

Aixia Sun  
Lab Director/Principal Scientist  
D.H.Sc., M.Sc., B.Sc., MT (AAB)



Definitions and Abbreviations used in this report: \*Total CBD = CBD + (CBD-A \* 0.877), \*Total CBDV = CBDV + (CBDVA \* 0.87), \*Total THC = THCA-A \* 0.877 + Delta 9 THC, \*Total THCV = THCV + (THCVA \* 0.87), \*CBG Total = (CBGA \* 0.877) + CBG, \*CBN Total = (CBNA \* 0.877) + CBN, \*Total CBC = CBC + (CBCA \* 0.877), \*Total THC-O-Acetate = Delta 8 THC-O-Acetate + Delta 9 THC-O-Acetate, \*Other Cannabinoids Total = Total Cannabinoids - All the listed cannabinoids on the summary section, \*Total Detected Cannabinoids = Delta6a10a-THC + Delta8-THC + Total CBN + CBT + Delta8-THCV + Total CBG + Total CBD + Total THCV + CBL + Total THC + Total CBC + Total CBDV + Delta10-THC + Total THC-O-Acetate, \*Analyte Details above show the Dry Weight Concentrations unless specified as 12% moisture concentration. (mg/ml) = Milligrams per Milliliter, LOQ = Limit of Quantitation, LOD = Limit of Detection, Dilution = Dilution Factor (ppb) = Parts per Billion, (%) = Percent, (cfu/g) = Colony Forming Unit per Gram (cfu/g) = Colony Forming Unit per Gram, LOD = Limit of Detection, (µg/g) = Microgram per Gram (ppm) = Parts per Million, (ppm) = (µg/g), (aw) = aw (area ratio) = Area Ratio, (mg/Kg) = Milligram per Kilogram, \*Measurement of Uncertainty = +/- 10%

This report shall not be reproduced, without written approval, from ACS Laboratory. The results of this report relate only to the material or product analyzed. Test results are confidential unless explicitly waived otherwise. Accredited by a third-party accrediting body as a competent testing laboratory pursuant to ISO/IEC 17025 of the International Organization for Standardization.