

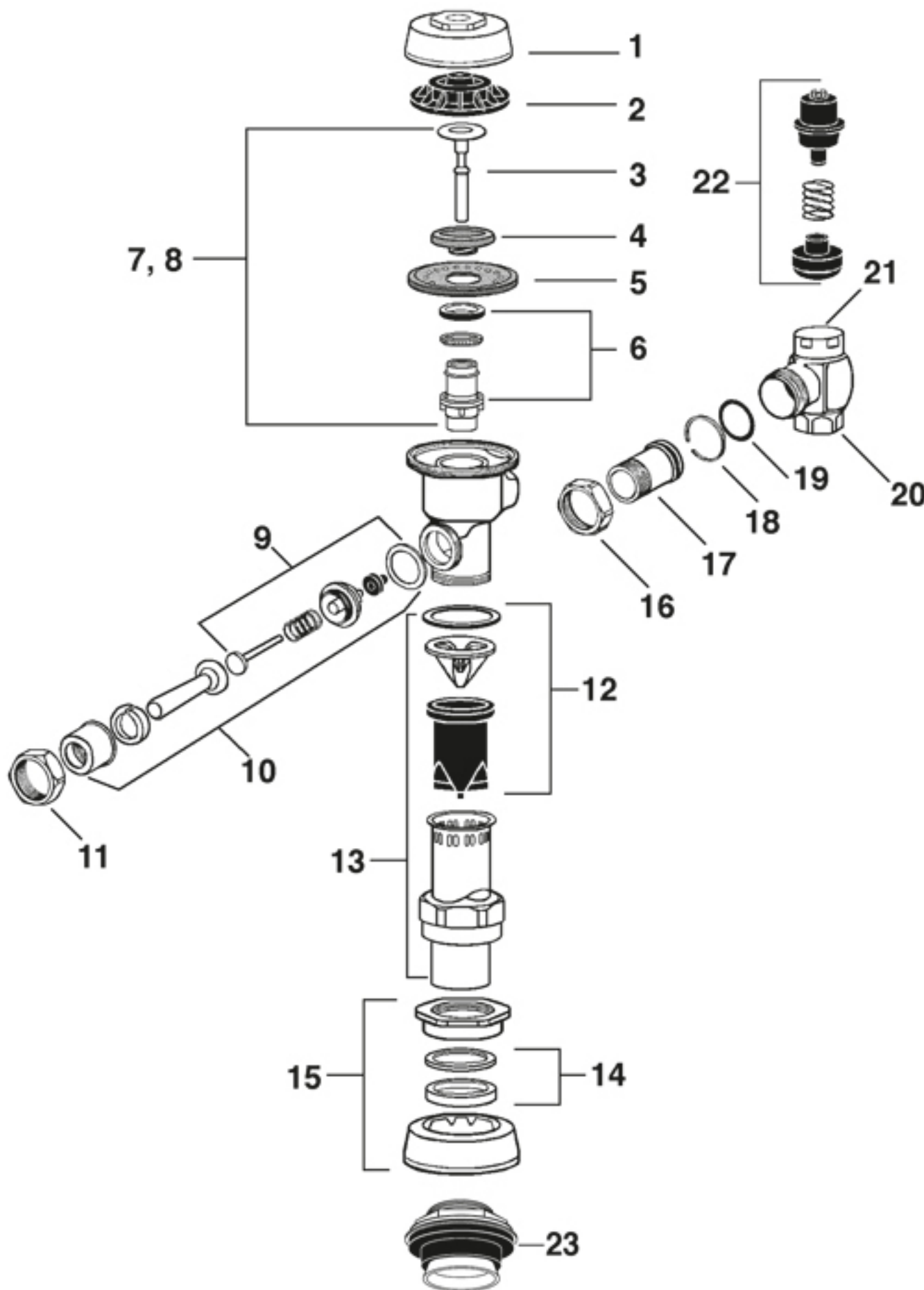
SLOAN ROYAL

MANUFACTURED UP TO 1998

Toll Free: 800-442-6622

Pittsburgh: 412-781-9100

Phone Hours: Mon-Fri: 8am-5:00pm



1	#08049	A72	C.P. Cover
2	#08050	A71	Inside Cover
	#08004	A19AC	Closet R. Valve (White)
	#08005	A19AU	Urinal R. Valve (Black)
3	#08052	A19ACM	Closet R. Valve Brass (Old Style)
	#08345	A19ALC	Low Consump. R. Valve (Green)
	#08053	A19AUM	Urinal R. Valve Brass (Old Style)
4	#08003	A15A	Molded Disc
	#08002	A156A	Diaphragm (Common)
5	#08051	A56A	Diaphragm (Old Style)
ADJUSTABLE GUIDES			
	#08006	A163A	Standard Guide
6	#08252	A152A-5301032	For 3.5 GPF Closet
	#08348	A151A	For 1.6 GPF Closet
	#08349	A155A	For 1.0 GPF Urinal
7	#08000	A38A	3.5 Closet Water Saver Kit
	#08571	A44A	2.4 Closet Retro Kit
	#08114	A41A	1.6 Closet Low Consumption
8	#08001	A37A	1.5 Urinal Retro Kit
	#08115	A42A	1.0 Urinal Low Consumption
9	#08007	B50A	Handle Repair Kit (Plastic)
	#08043	C64A	Handle Repair Kit (Brass)
10	#08008	B32A	C.P. Handle Assy.
	#08069	B73A	A.D.A. Handle Assy.
11	#08054	A6	C.P. Handle Nut
12	#08012	V551A	V/B Repair Kit
CHROME PLATED VACUUM BREAKERS			
	#08014	V500AA	1-1/2" x 9" Closet
13	#08015	V500AA	1-1/4" x 9" Urinal
	#08016	V500AA	3/4" x 9" Urinal
	#08020	Equiparts	1-1/2" Gasket Kit
14	#08021	Equiparts	1-1/4" Gasket Kit
	#08022	Equiparts	3/4" Gasket Kit
	#08017	F5AT	1-1/2" Coupling Assy.
15	#08018	F5AU	1-1/4" Coupling Assy.
	#08019	F5AW	3/4" Coupling Assy.
16	#08040	H550	Tailpiece Coupling Nut
17	#08039	H551A	Adjustable Tailpiece 2-1/16" (Other Lengths Available)
18	#08038	H552	Locking Ring
19	#08037	H553	"O" Ring
20	Click Here		Control Stop
21	Click Here		C.P. Stop Covers
	#08033	H543ASD	3/4" Control Stop Repair Kit
22	#08032	H541ASD	1" Control Stop Repair Kit
	#08023		1-1/2" Spud Assembly
23	#08024		1-1/4" Spud Assembly
	#08025		3/4" Spud Assembly